



Elgin Mansions, Elgin Avenue, Maida Vale, London W9 .| £1,100,000

- Turnkey
- Patio Garden with Projector TV
- Gym
- Gardens

- Double Glazing
- Chain Free

"Vita Properties have been tremendously helpful throughout the process of securing/renting my flat. Informative about the property, prompt communication, easy to use dashboard for sharing of information, and pleasant to work with. Highly recommend!"

Stunning 2-Bed Garden Apartment for Sale in Maida Vale – Smart Home with Private Patio & Gym

Experience luxury London living in this beautifully presented two-bedroom garden apartment located in the heart of Maida Vale. Offering approximately 970 sqft (90 sqm) of stylish living space, this ground-floor property is set within the sought-after Elgin Mansions, a classic period mansion block known for its charm and location.

This fully modernized smart home features:

Double glazing & soundproofed ceilings for peace and comfort

Underfloor heating throughout

Integrated Sonos sound system

Advanced Blinq security system

The highlight of this apartment is the generous 500 sqft (46.5 sqm) private patio, which includes two beautifully designed garden rooms—currently configured as a fully equipped home gym and a soundproofed music studio.

Situated just steps from the vibrant cafes and restaurants of Elgin Avenue and Lauderdale Parade, this

Enjoy the open green spaces and sports facilities at Paddington Recreation Ground, just 200 meters away. Maida Vale Station (Bakerloo Line) is also within a short 0.2-mile walk, ensuring effortless connectivity across London.

Perfect for professionals, couples, or anyone seeking a tranquil yet central London lifestyle, this Maida Vale garden flat offers space, technology, and location in one impressive package.



Oliver Kent

✉ oliver.kent@vitaproperties.uk
☎ +4477 7274 0351



 Flat

 Leasehold

 x 2

 x 1

 x 2



flat offers unbeatable access to

local amenities.

"I was very impressed with Vita and their network of buyers. When the sale of my flat fell through (twice) they worked extremely hard to find new buyers in a difficult market - thank you!"



"Working with Vita properties has been a smooth experience! No complaints at all. Our letting agent, Diana has been fantastic and very helpful throughout the whole process. I would highly recommend both Vita properties and Diana."



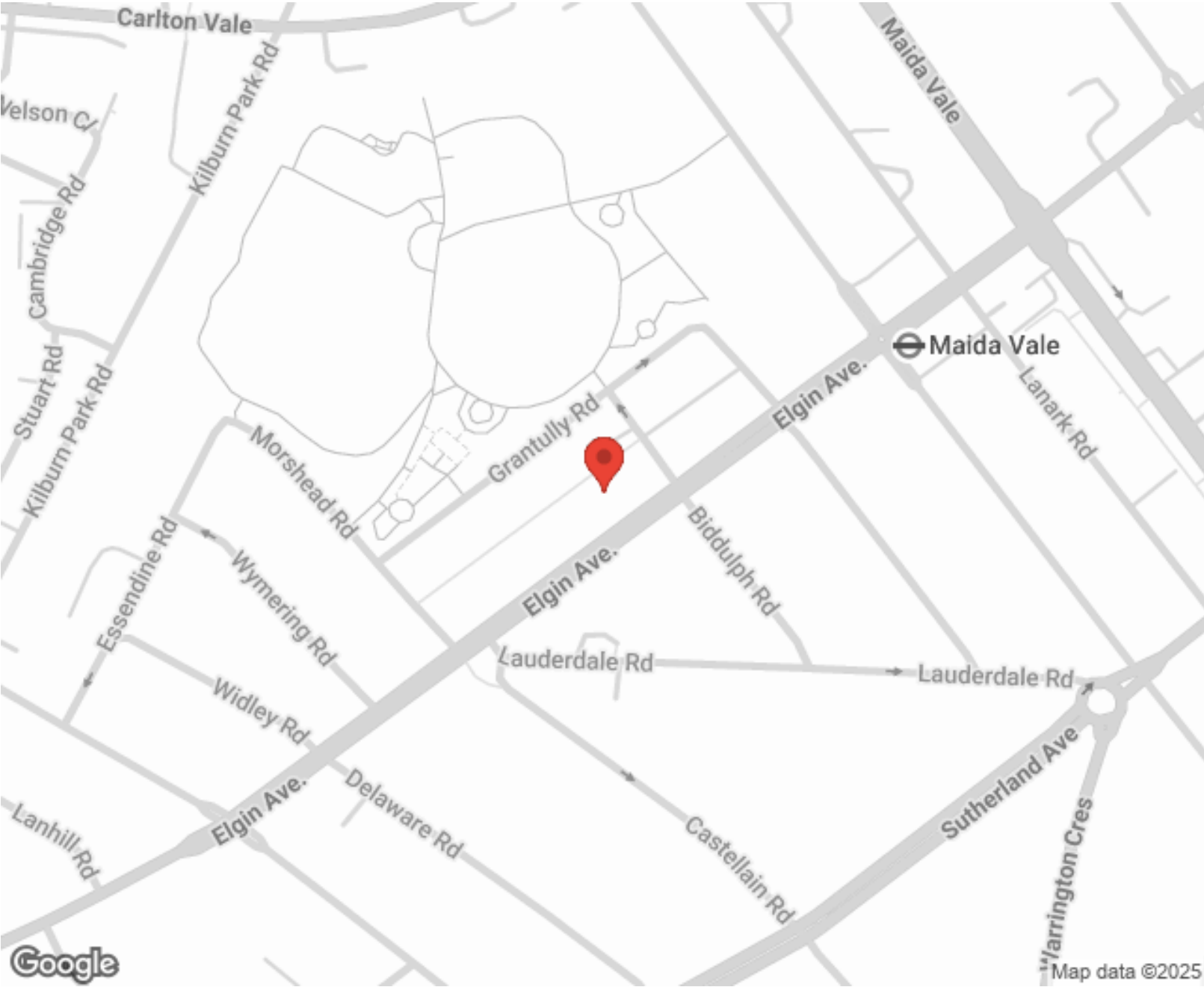
"I used Vita properties to find a flat recently and it was an overall professional, personalised and positive experience. Saira went the extra mile to accommodate to our needs and quick to help us whenever possible."



MORE INFO, PICTURES,
CONTACT ON
OUR WEBSITE



"Vita Properties is a very professional agency. My experience with them was incredible and the entire team was very helpful and kind throughout the renting process. I'd highly recommend!"



Score	Energy rating	Current	Potential
92+	A		
81-91	B		
69-80	C		
55-68	D		66 D
39-54	E	40 E	
21-38	F		
1-20	G		

SCAN FOR MORE
GOOGLE REVIEWS

Google
★★★★★
4.9 Stars | 132 Reviews

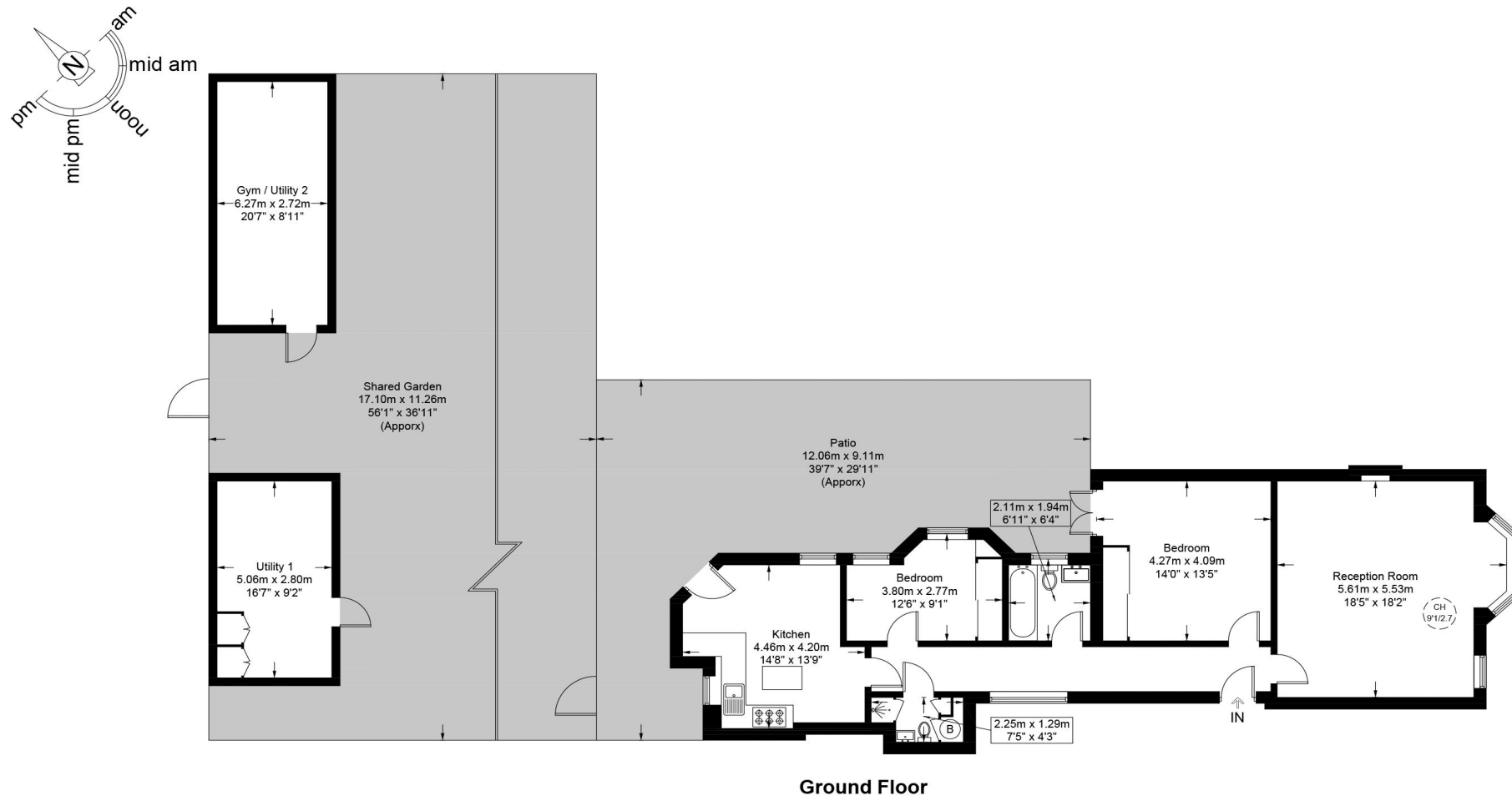
Find us on social media

vitaproperties
 VitaProperties
 VitaProperties

Elgin Mansions, W9

Approximate Gross Internal Area = 1314 sq ft / 122.1 sq m

Outhouse = 334 sq ft / 31.0 sq m



This plan is for layout guidance only and is not drawn to scale unless stated. All dimensions, including windows, doors, and the Total Gross Internal Area (GIA), are approximate. For precise measurements, please consult a qualified architect or surveyor before making any decisions based on this plan.



**Certified
Property
Measurer**