



Brondesbury Park, Queens Park, London NW6 . | £500,000

- Smart one bedroom apartment
- Patio garden
- Communal garden and off street parking
- Secure gated building
- CCTV
- Excellent location for quick access to Queens Park

"Vita Properties have been tremendously helpful throughout the process of securing/renting my flat. Informative about the property, prompt communication, easy to use dashboard for sharing of information, and pleasant to work with. Highly recommend!"

A spacious and beautifully presented one-bedroom apartment with a private patio, located just moments from Queen’s Park, NW6.

Set on the ground floor of an iconic building on Brondesbury Park, this well-maintained home is offered in excellent condition and includes the added benefit of an off-street parking space. Upon entry, you're welcomed by a large hallway with space for side tables and a dedicated coat cupboard. The recently updated shower room sits opposite a tranquil bedroom, which features excellent built-in storage and charming views over the communal garden.

The heart of the home is the generous open-plan living space, thoughtfully arranged with a modern kitchen and dining area leading seamlessly into a comfortable lounge. Large sliding doors open directly onto the private patio — perfect for morning coffee or al fresco dining.

Ideally located just a five-minute walk from Brondesbury Overground and a short stroll to Queen’s Park station, you're also close to the vibrant amenities of Salusbury Road and Lonsdale Road.


Find the instagram content @shayla_the_agent




Kate Brookfield


✉ Kate.brookfield@vitaproperties.uk
☎ +4478 1365 5431





 Flat



Leasehold

 x 1

 x 1

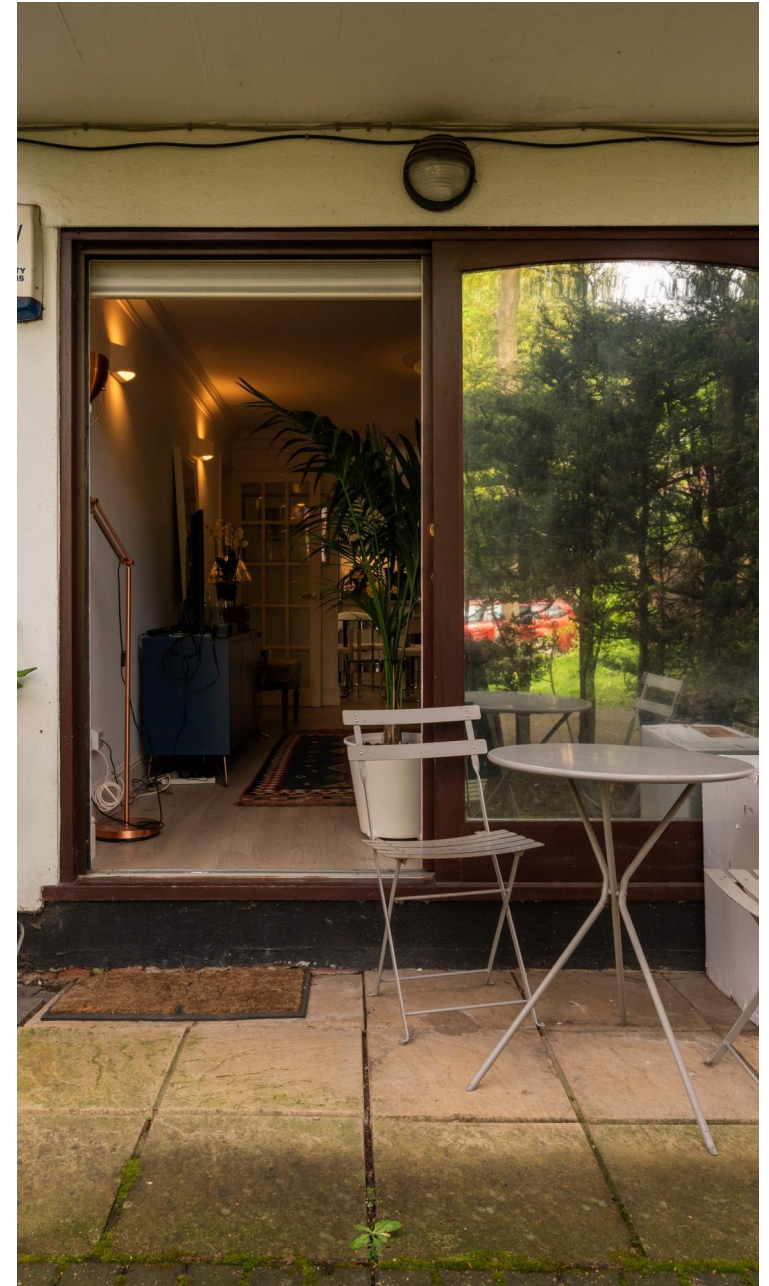
 x 1

SCAN FOR
A VIDEO
WALKTHROUGH





"I was very impressed with Vita and their network of buyers. When the sale of my flat fell through (twice) they worked extremely hard to find new buyers in a difficult market - thank you!"



"Working with Vita properties has been a smooth experience! No complaints at all. Our letting agent, Diana has been fantastic and very helpful throughout the whole process. I would highly recommend both Vita properties and Diana."



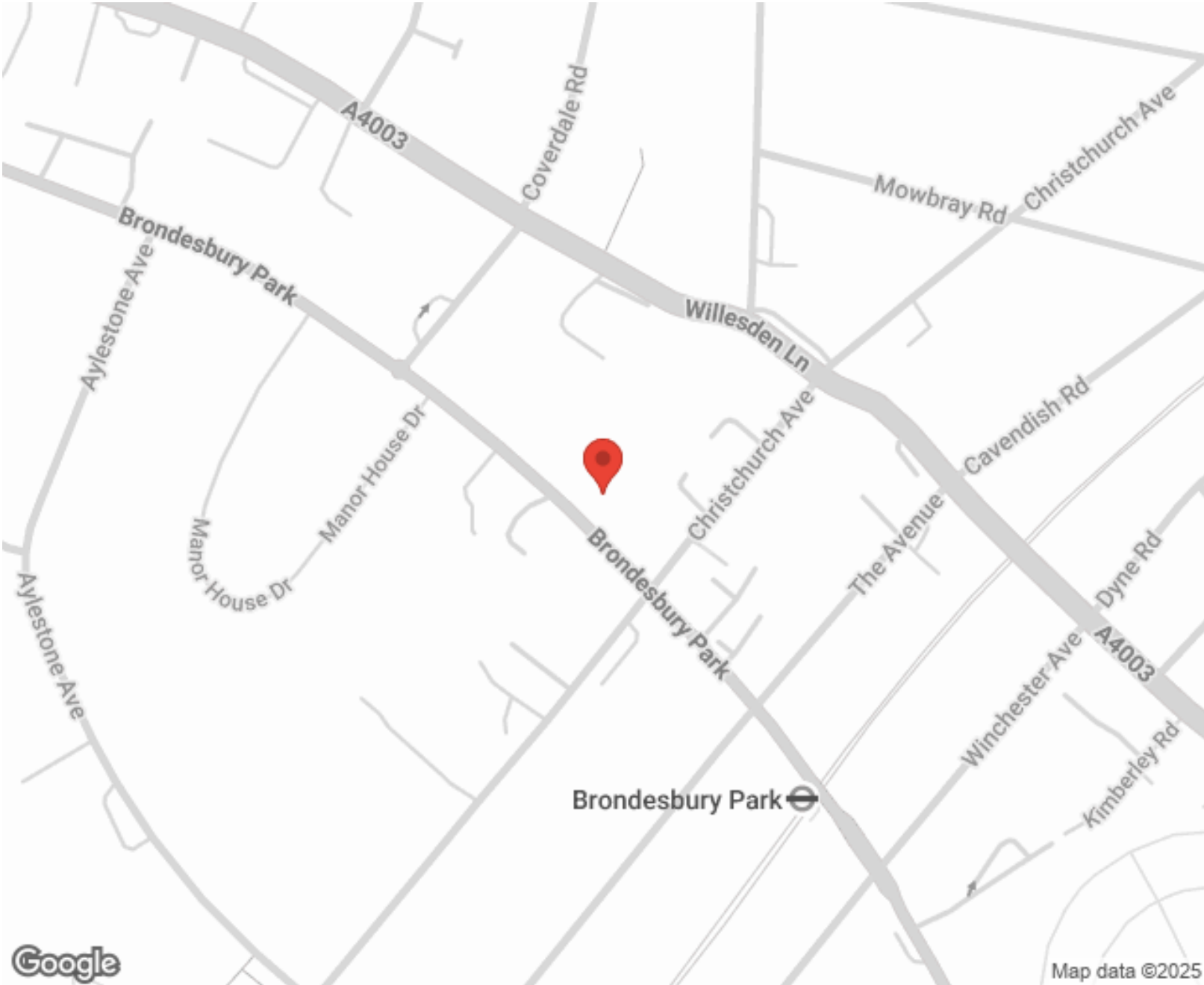
"I used Vita properties to find a flat recently and it was an overall professional, personalised and positive experience. Saira went the extra mile to accommodate to our needs and quick to help us whenever possible."



MORE INFO, PICTURES,
CONTACT ON
OUR WEBSITE



"Vita Properties is a very professional agency. My experience with them was incredible and the entire team was very helpful and kind throughout the renting process. I'd highly recommend!"



Score	Energy rating	Current	Potential
92+	A		
81-91	B		
69-80	C	72 C	78 C
55-68	D		
39-54	E		
21-38	F		
1-20	G		

SCAN FOR MORE
GOOGLE REVIEWS

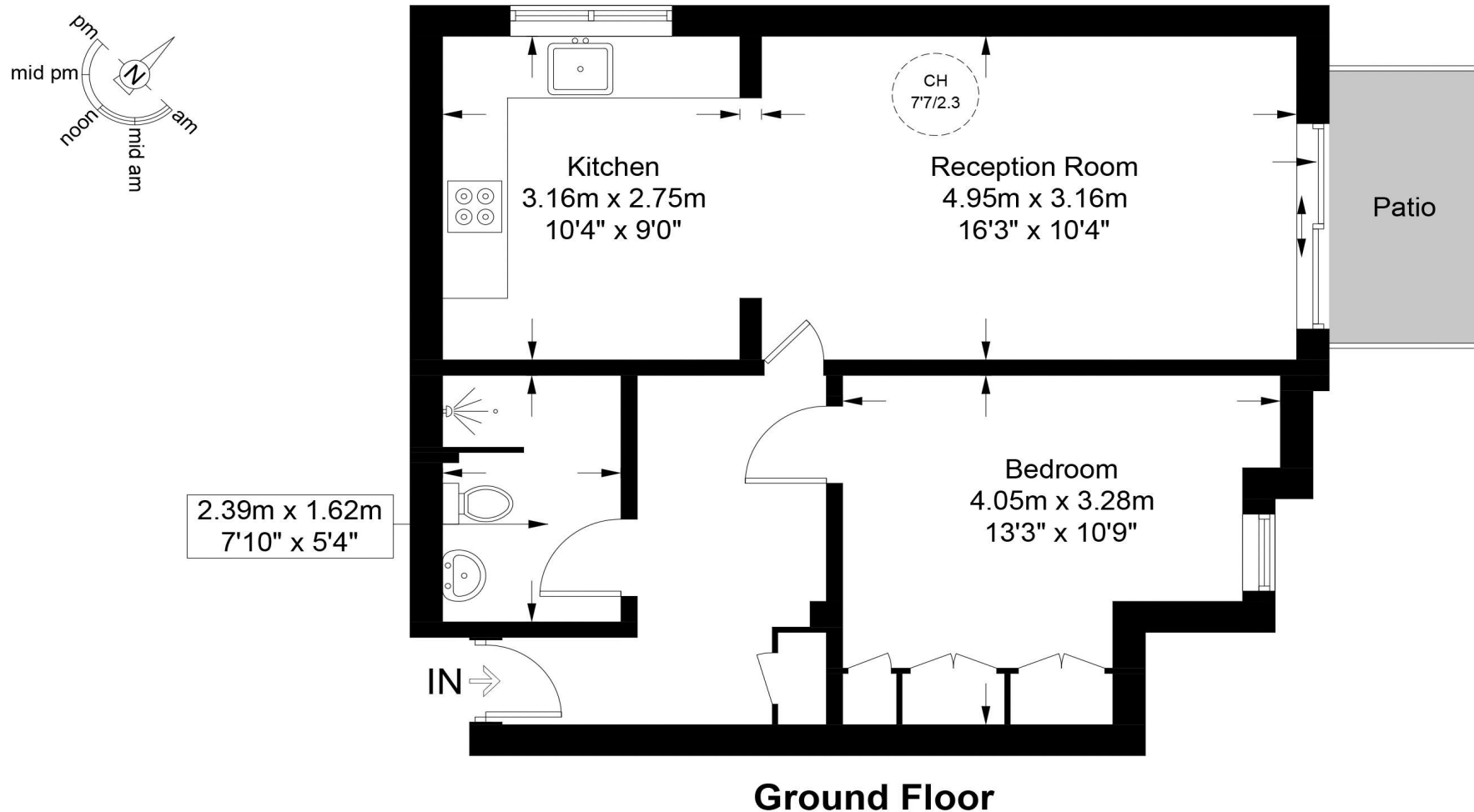
Google
★★★★★
4.9 Stars | 132 Reviews

Find us on social media

vitaproperties
 VitaProperties
 VitaProperties

Limes Court, NW6

Approximate Gross Internal Area = 537 sq ft / 49.9 sq m



This plan is for layout guidance only and is not drawn to scale unless stated. All dimensions, including windows, doors, and the Total Gross Internal Area (GIA), are approximate. For precise measurements, please consult a qualified architect or surveyor before making any decisions based on this plan.



**Certified
Property
Measurer**