



## Westbourne Terrace, Bayswater, London W2 . | £2,250,000

- Stunning Period Building
- Two Terraces & Further
- Three Double Bedrooms
- Two Bathrooms
- Grand Reception Room With Stunning Mezzanine
- Passenger Lift
- Share Of Freehold
- Original Features

"Vita Properties have been tremendously helpful throughout the process of securing/renting my flat. Informative about the property, prompt communication, easy to use dashboard for sharing of information, and pleasant to work with. Highly recommend!"

R U I X Vita Properties are delighted to offer in Bayswater's most prestigious area this beautiful character filled and rarely available divine duplex apartment. Upon entering the building there is a grand marble entrance hall with the benefit of passenger lift. The apartment is found on the first floor and provides: Fitted kitchen with a range of units, integrated appliances, breakfast bar and access to balcony, 21ft+ grand reception room with circa 4.4m high ceilings, fireplace, three floor to ceiling twin doors leading out to the terrace, principal 19ft bedroom with ample fitted wardrobes access to further terrace and spacious En-Suite, guest W/c, stairs leading to two further bedrooms with a further terrace off the second bedroom with fitted wardrobes, "21ft bright mezzanine - study/reception room" over looking the grand reception. Further benefits include: SOFH and residents off street parking (permit required). Located close to Hyde Park along with an array of restaurants, and leisure facilities.






With excellent transport links, including Notting Hill, Bayswater, and Queensway tube stations.



Malcolm Ornstein

✉ malcolm.ornstein@vitaproperties.uk  
☎ +4479 5647 8618

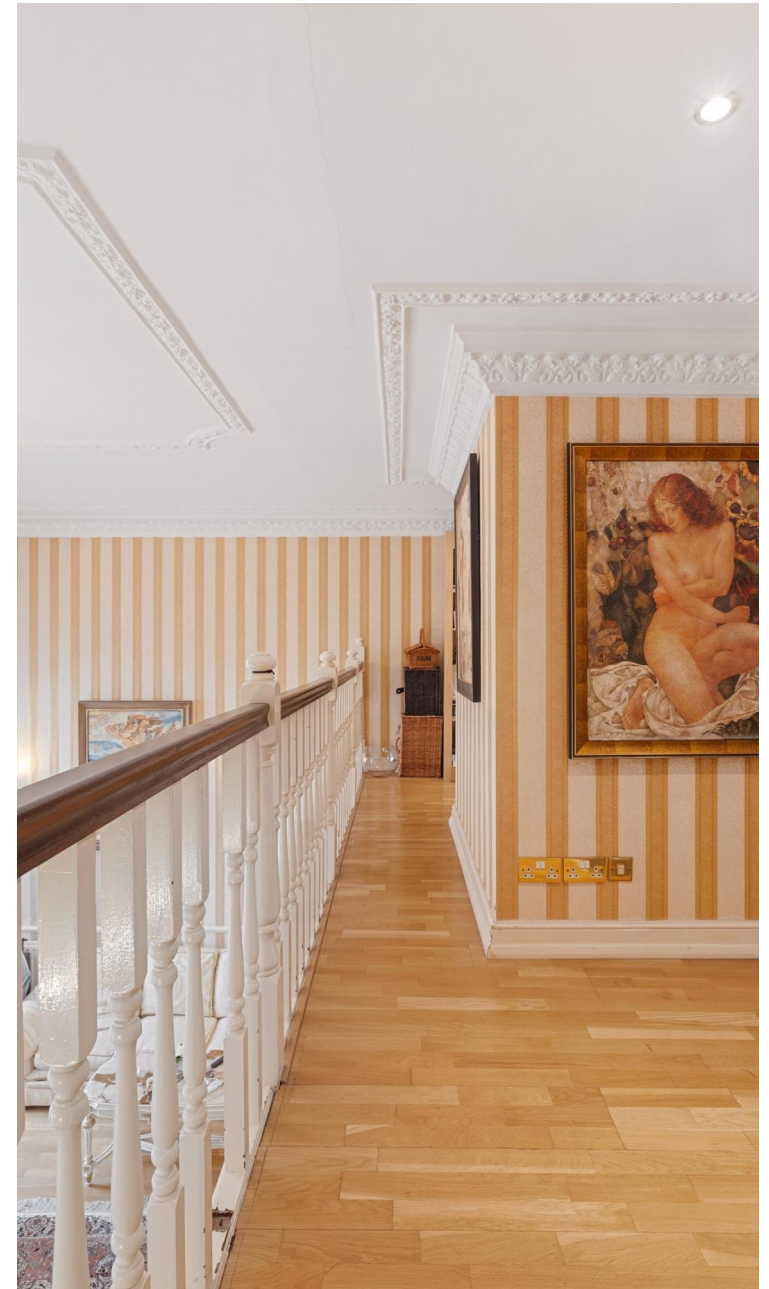


	Flat
	Share of Freehold
	x 3
	x 2
	x 2



"I was very impressed with Vita and their network of buyers. When the sale of my flat fell through (twice) they worked extremely hard to find new buyers in a difficult market - thank you!"

---



"Working with Vita properties has been a smooth experience! No complaints at all. Our letting agent, Diana has been fantastic and very helpful throughout the whole process. I would highly recommend both Vita properties and Diana."

---



"I used Vita properties to find a flat recently and it was an overall professional, personalised and positive experience. Saira went the extra mile to accommodate to our needs and quick to help us whenever possible."

---



**MORE INFO, PICTURES,  
CONTACT ON  
OUR WEBSITE**



"Vita Properties is a very professional agency. My experience with them was incredible and the entire team was very helpful and kind throughout the renting process. I'd highly recommend!"



Score	Energy rating	Current	Potential
92+	A		
81-91	B		
69-80	C		80 C
55-68	D	66 D	
39-54	E		
21-38	F		
1-20	G		

SCAN FOR MORE  
GOOGLE REVIEWS



Google



4.9 Stars | 132 Reviews

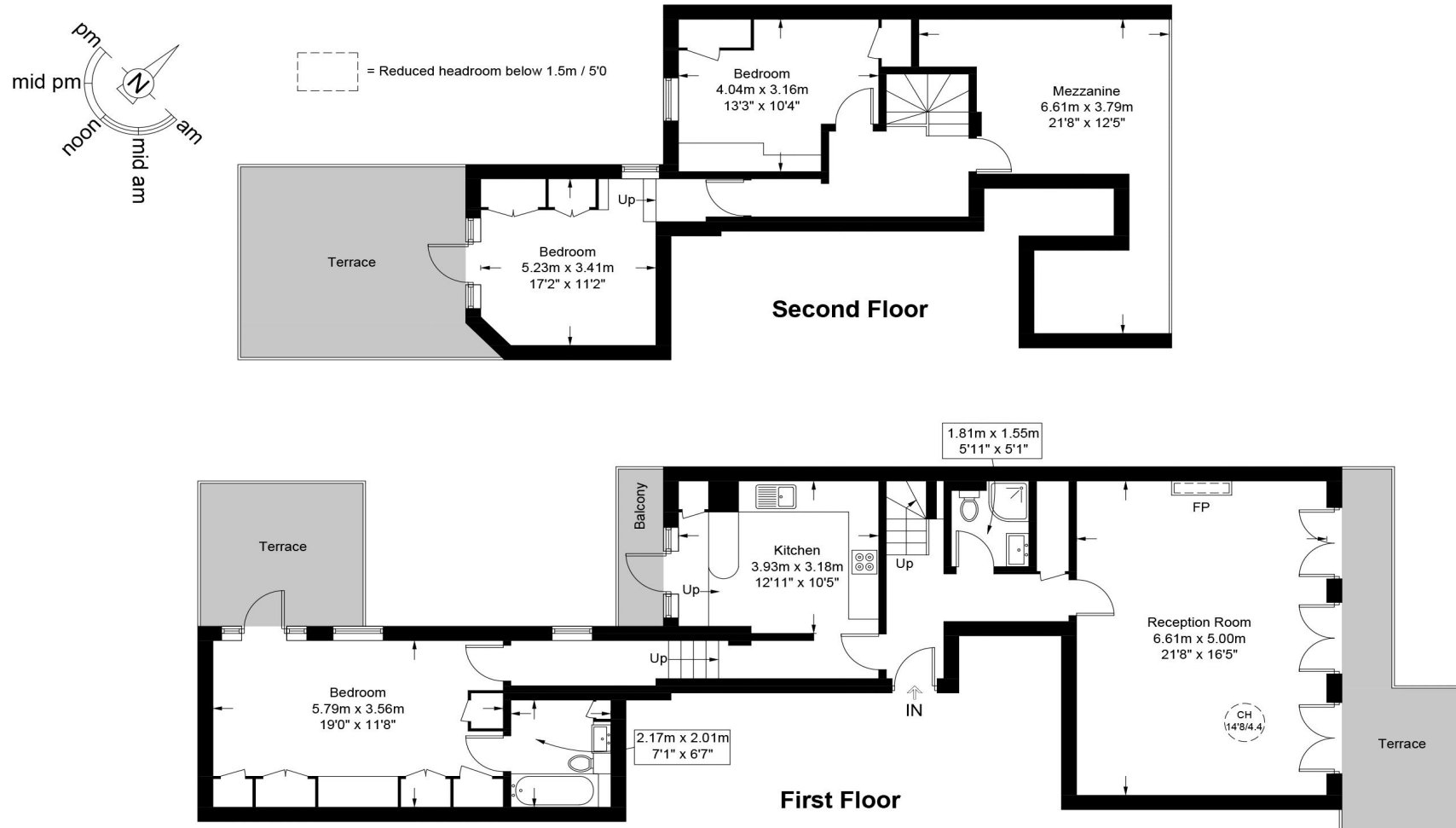
Find us on social media

- vitaproperties
- VitaProperties
- VitaProperties

# Westbourne Terrace, W2

Approximate Gross Internal Area = 1601 sq ft / 148.7 sq m

Restricted Height = 137 sq ft / 12.7 sq m



This plan is for layout guidance only and is not drawn to scale unless stated. All dimensions, including windows, doors, and the Total Gross Internal Area (GIA), are approximate. For precise measurements, please consult a qualified architect or surveyor before making any decisions based on this plan.



Certified  
Property  
Measurer