



Leghorn Road, Kensal Green, London NW10 .| £650,000

- 1258 sq ft upper floor duplex
- Moody, eclectic interiors
- Large separate kitchen/dining room
- Two generous double bedrooms
- Bright rooms and high ceilings
- Very close to transport links

"Vita Properties have been tremendously helpful throughout the process of securing/renting my flat. Informative about the property, prompt communication, easy to use dashboard for sharing of information, and pleasant to work with. Highly recommend!"

Kate Brookfield x Vita Properties present this stunning two bedroom duplex apartment with moody and eclectic interiors, in Kensal Green NW10.

Featuring a rich, moody colour palette and eclectic interiors, this incredible home is perfect for those seeking something beyond the mainstream.

With an entrance at ground-floor level, an internal staircase leads to the first floor, where you are immediately greeted by a stunning kitchen and dining space. The current owners, passionate about fine dining, have designed a kitchen that transports you to a boutique restaurant. The space features burgundy cabinetry, hand-painted striped walls, and mirrored accents, with fitted banquette seating for an intimate dining experience. A clever use of glazed porcelain tiles within the worktop adds texture, while two large windows and high ceilings bring in an abundance of natural light, enhancing the room's elegance.

Moving through the hallway toward the front of the home, you'll find a stylish bathroom featuring dark green Victorian metro tiles, brass fittings, and a striking hand-painted artwork spanning one wall. Next to the bathroom, a generous double bedroom offers a comfortable retreat. The living area, with its large windows, high ceilings, stripped wooden floors, and an original fireplace fitted with a bio-ethanol insert, completes the first floor.

On the second floor, a beautifully converted loft bedroom offers a spacious and versatile area, featuring double Velux windows and an exposed brick accent wall—the perfect setting for a full-time bedroom with room for a home office.



Kate Brookfield

✉ Kate.brookfield@vitaproperties.uk
☎ +4478 1365 5431

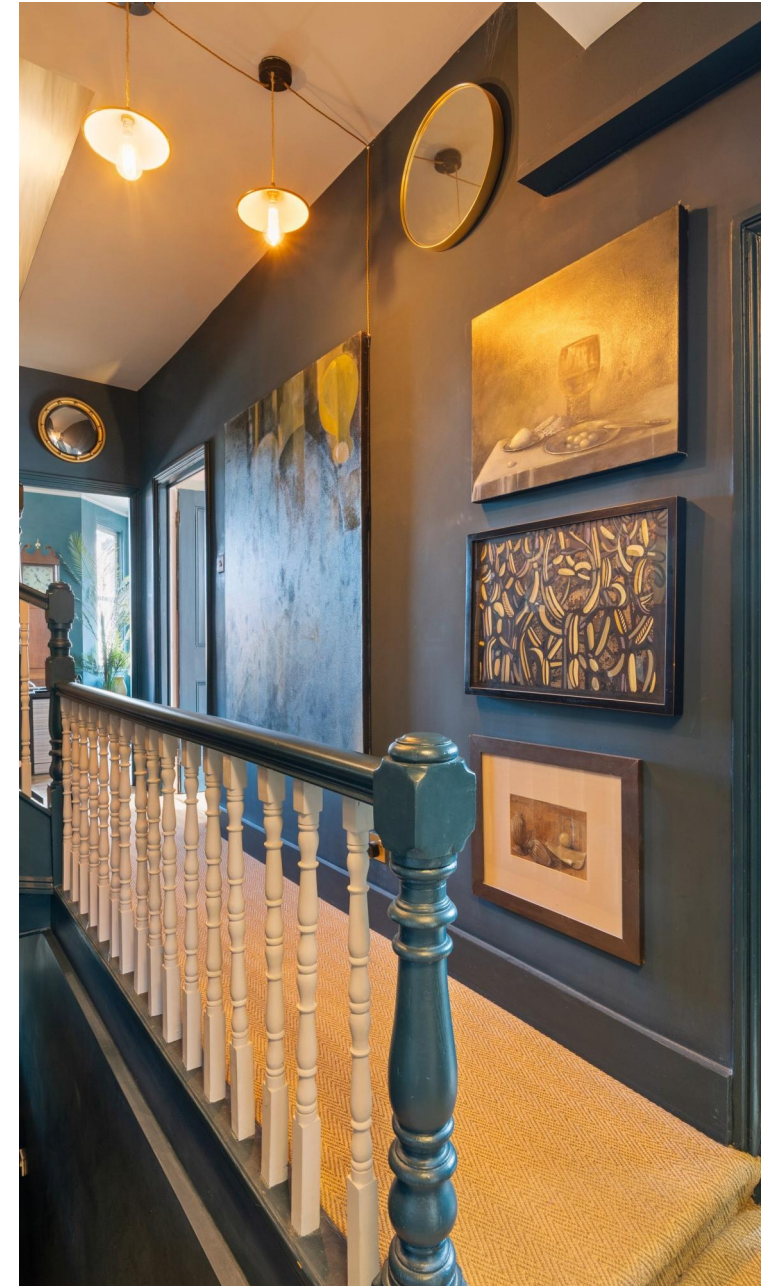


🏠 Flat
🔑 Leasehold
🛏 x 2
🛁 x 1
🚿 x 1

SCAN FOR
A VIDEO
WALKTHROUGH



"I was very impressed with Vita and their network of buyers. When the sale of my flat fell through (twice) they worked extremely hard to find new buyers in a difficult market - thank you!"



"Working with Vita properties has been a smooth experience! No complaints at all. Our letting agent, Diana has been fantastic and very helpful throughout the whole process. I would highly recommend both Vita properties and Diana."



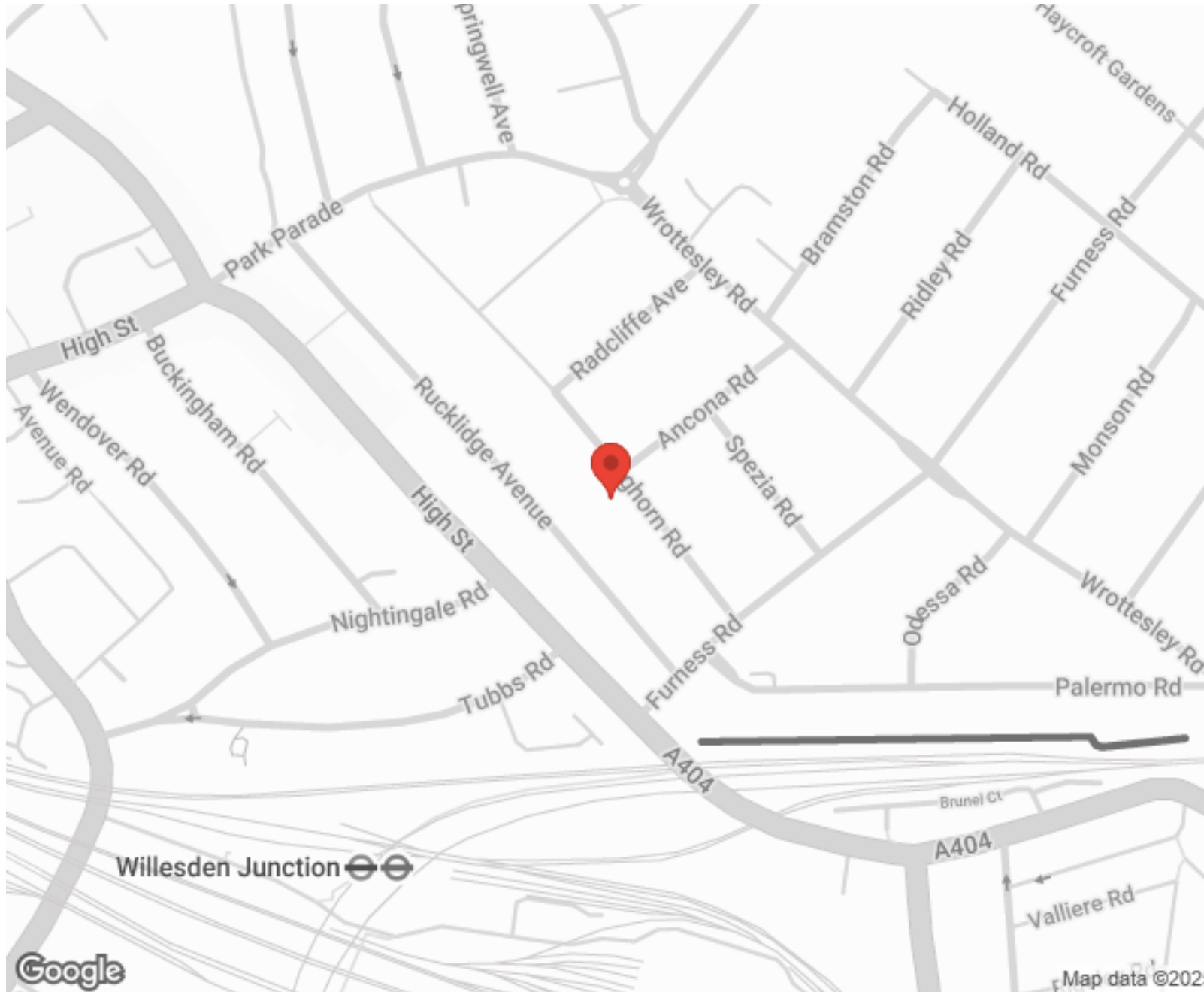
"I used Vita properties to find a flat recently and it was an overall professional, personalised and positive experience. Saira went the extra mile to accommodate to our needs and quick to help us whenever possible."



MORE INFO, PICTURES,
CONTACT ON
OUR WEBSITE



"Vita Properties is a very professional agency. My experience with them was incredible and the entire team was very helpful and kind throughout the renting process. I'd highly recommend!"



Score	Energy rating	Current	Potential
92+	A		
81-91	B		
69-80	C	75 C	78 C
55-68	D		
39-54	E		
21-38	F		
1-20	G		

SCAN FOR MORE
GOOGLE REVIEWS



Google



4.9 Stars | 132 Reviews

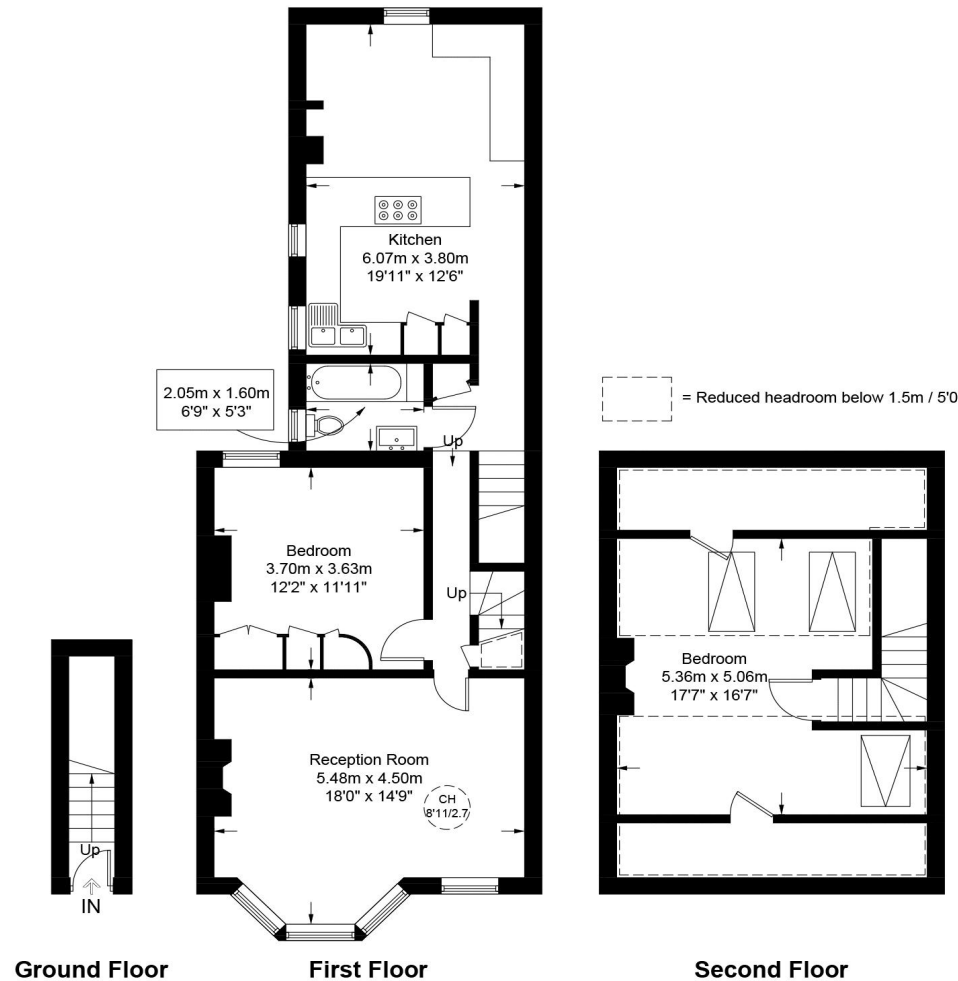
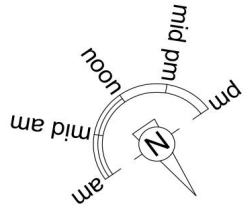
Find us on social media

- vitaproperties
- VitaProperties
- VitaProperties

Leghorn Road, NW10

Approximate Gross Internal Area = 1258 sq ft / 116.9 sq m

Restricted Height = 336 sq ft / 31.2 sq m



This plan is for layout guidance only and is not drawn to scale unless stated. All dimensions, including windows, doors, and the Total Gross Internal Area (GIA), are approximate. For precise measurements, please consult a qualified architect or surveyor before making any decisions based on this plan.



Certified
Property
Measurer