



## Boydell Court, St. Johns Wood Park, London NW8 .| £5,417

- Heating and Hot Water Included
- Pet Friendly
- Walking Distance To Public Transport and Amenities
- 24 Hour Portage Within A Gated Development

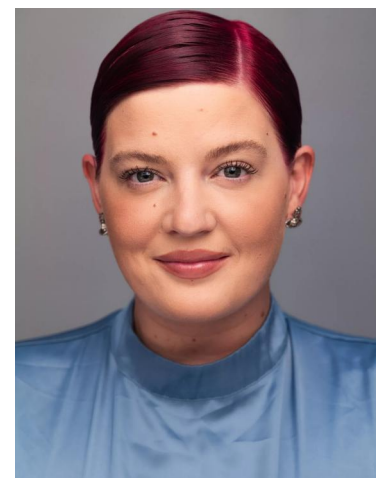
- Wooden Floors
- First Serve Parking
- Available from 25th March 2025

"Vita Properties have been tremendously helpful throughout the process of securing/renting my flat. Informative about the property, prompt communication, easy to use dashboard for sharing of information, and pleasant to work with. Highly recommend!"

A beautifully presented three-bedroom apartment, set within a well-maintained, purpose-built block with 24-hour porterage.

This bright and airy property has been refurbished to the highest standard and features a dual-aspect reception room with stunning London views. The spacious layout includes a principal bedroom with an en-suite bathroom and walk-in wardrobe, a second double bedroom, a third double bedroom, a reception/dining room, a fully fitted kitchen, and a guest cloakroom.

Boydell Court is ideally located near the amenities and underground stations of both Swiss Cottage and St John's Wood (Jubilee Line), with first-come, first-served parking available.



Phoebe Knight

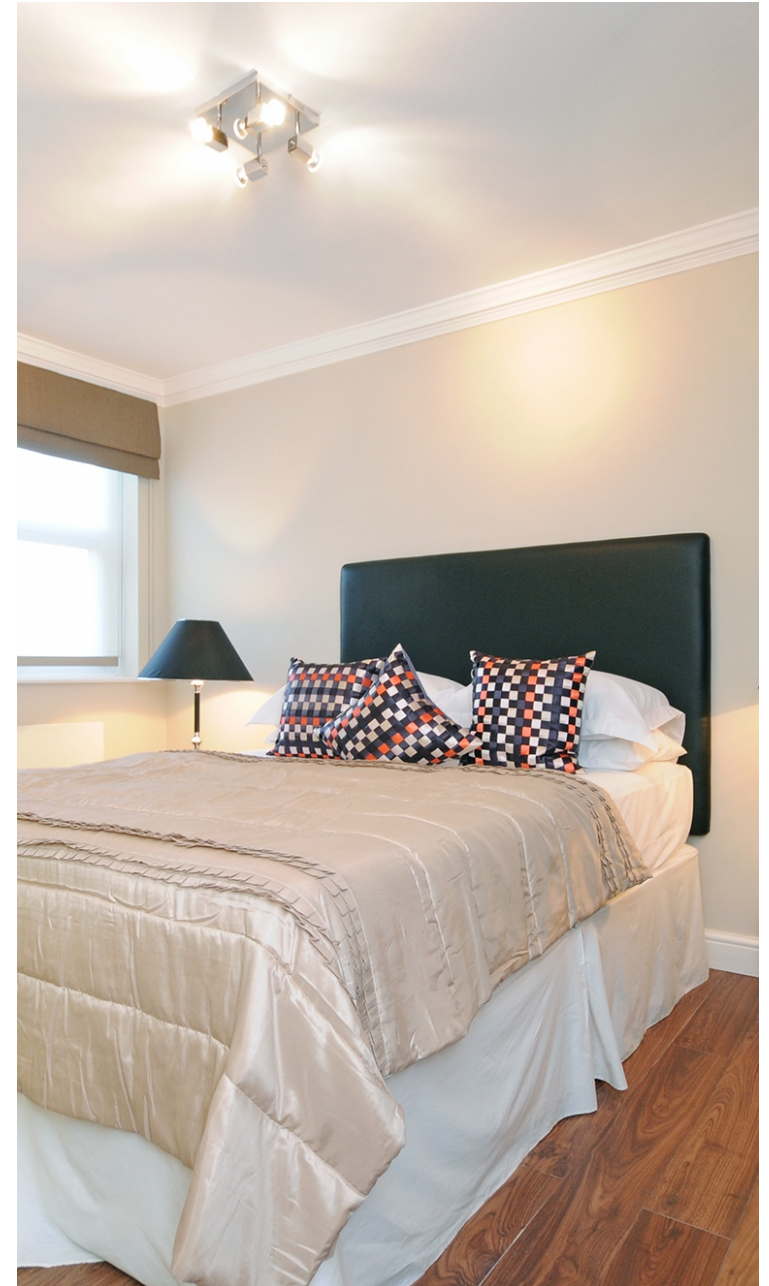
✉ phoebe@vitaproperties.uk  
☎ +4475 8401 9612



🏠	Flat
🔑	Available to Let
🛏️	x 3
🛋️	x 1
🚪	x 2

"I was very impressed with Vita and their network of buyers. When the sale of my flat fell through (twice) they worked extremely hard to find new buyers in a difficult market - thank you!"

---



"Working with Vita properties has been a smooth experience! No complaints at all. Our letting agent, Diana has been fantastic and very helpful throughout the whole process. I would highly recommend both Vita properties and Diana."

---



"I used Vita properties to find a flat recently and it was an overall professional, personalised and positive experience. Saira went the extra mile to accommodate to our needs and quick to help us whenever possible."

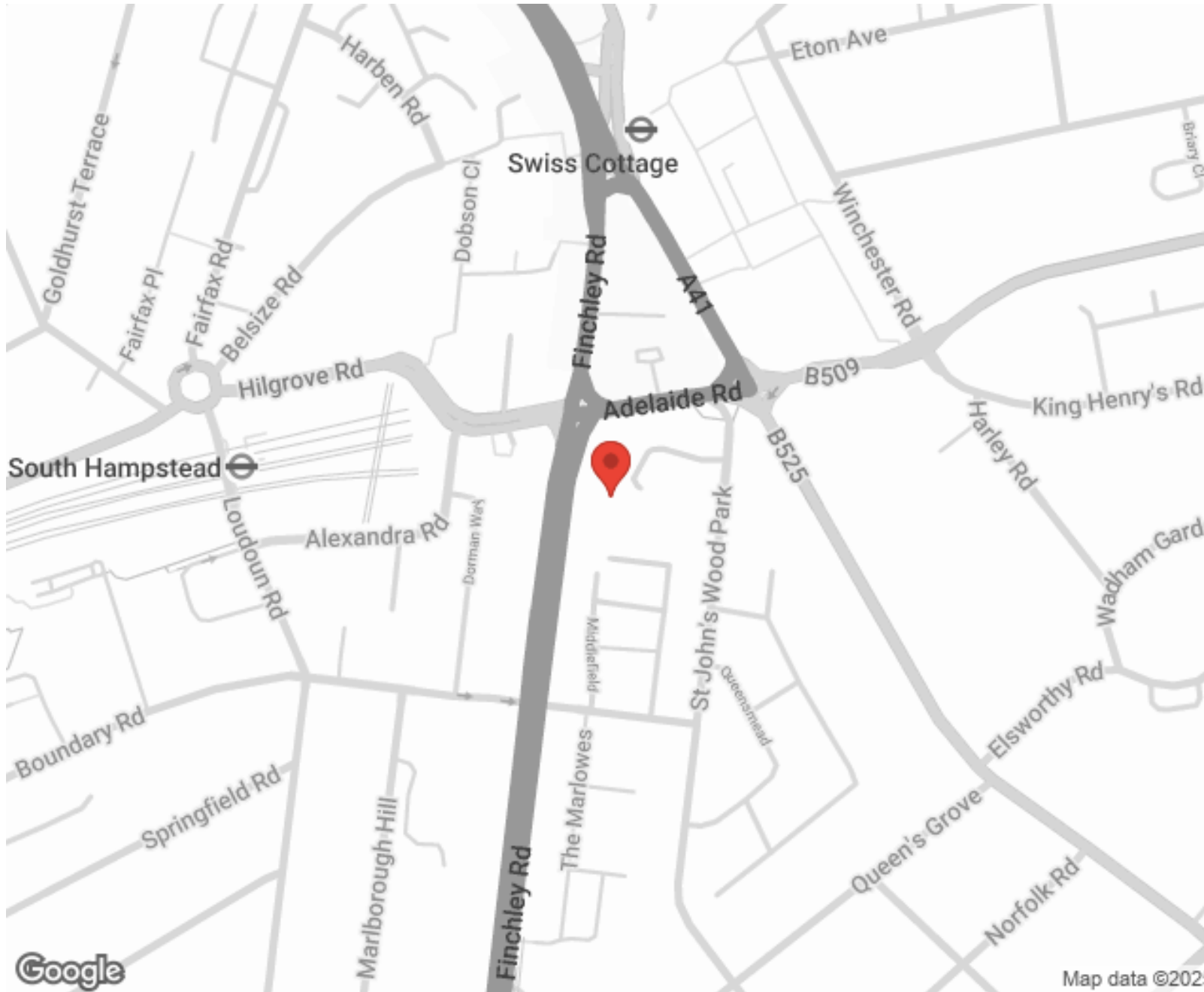
---



**MORE INFO, PICTURES,  
CONTACT ON  
OUR WEBSITE**



"Vita Properties is a very professional agency. My experience with them was incredible and the entire team was very helpful and kind throughout the renting process. I'd highly recommend!"



Score	Energy rating	Current	Potential
92+	A		
81-91	B		81 B
69-80	C	72 C	
55-68	D		
39-54	E		
21-38	F		
1-20	G		

SCAN FOR MORE  
GOOGLE REVIEWS



Google



4.9 Stars | 132 Reviews

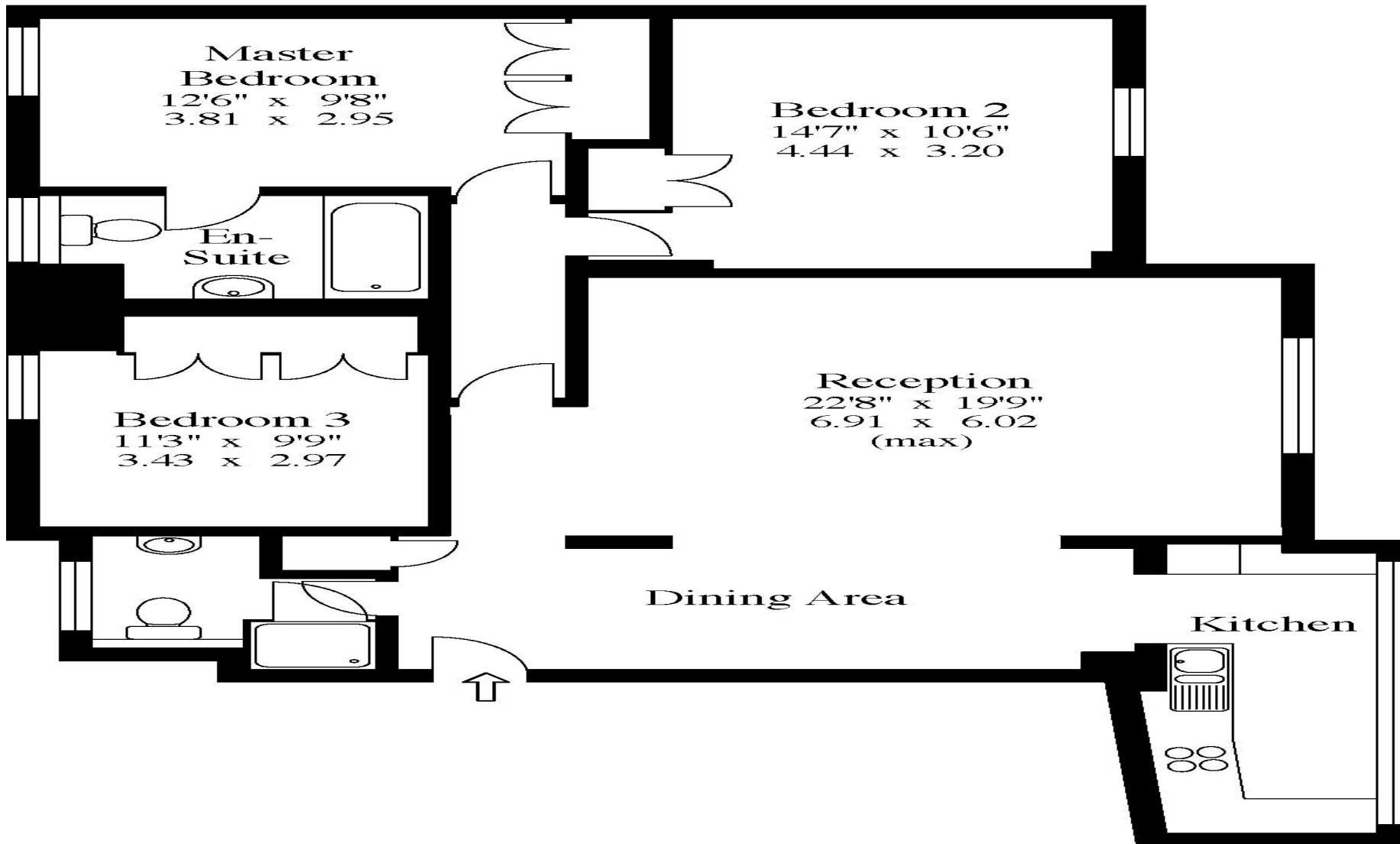
Find us on social media

- vitaproperties
- VitaProperties
- VitaProperties

79 Boydell Court  
St Johns Wood Park  
NW8.



Approx Gross Floor Area = 1093 Sq. Feet  
= 101.5 Sq. Metres



Seventh Floor

For illustrative purposes only. Not to scale.  
Prepared by Making Plans Ltd. Tel : 0113 258 7607