



Ivy Road, Cricklewood, London NW2 . | £900,000

- End of Terrace
- Garden

"Vita Properties have been tremendously helpful throughout the process of securing/renting my flat. Informative about the property, prompt communication, easy to use dashboard for sharing of information, and pleasant to work with. Highly recommend!"

A 3 bedroom house!

Ivy Road is perfectly located for quick and easy access to Willesden Green and Cricklewood, as well as being close to West Hampstead, Kilburn and Queens Park. The area remains popular with young families thanks to desirable nurseries and primary/secondary schools (both state and private) and also the convenient access to the M1 and A406.







Jonathan Singer

✉ jonathan.singer@vitaproperties.uk

☎ +4478 8428 6414



	House
	Freehold
	x 3
	x 1
	x 2

SCAN FOR
A VIDEO
WALKTHROUGH



"I was very impressed with Vita and their network of buyers. When the sale of my flat fell through (twice) they worked extremely hard to find new buyers in a difficult market - thank you!"



"Working with Vita properties has been a smooth experience! No complaints at all. Our letting agent, Diana has been fantastic and very helpful throughout the whole process. I would highly recommend both Vita properties and Diana."



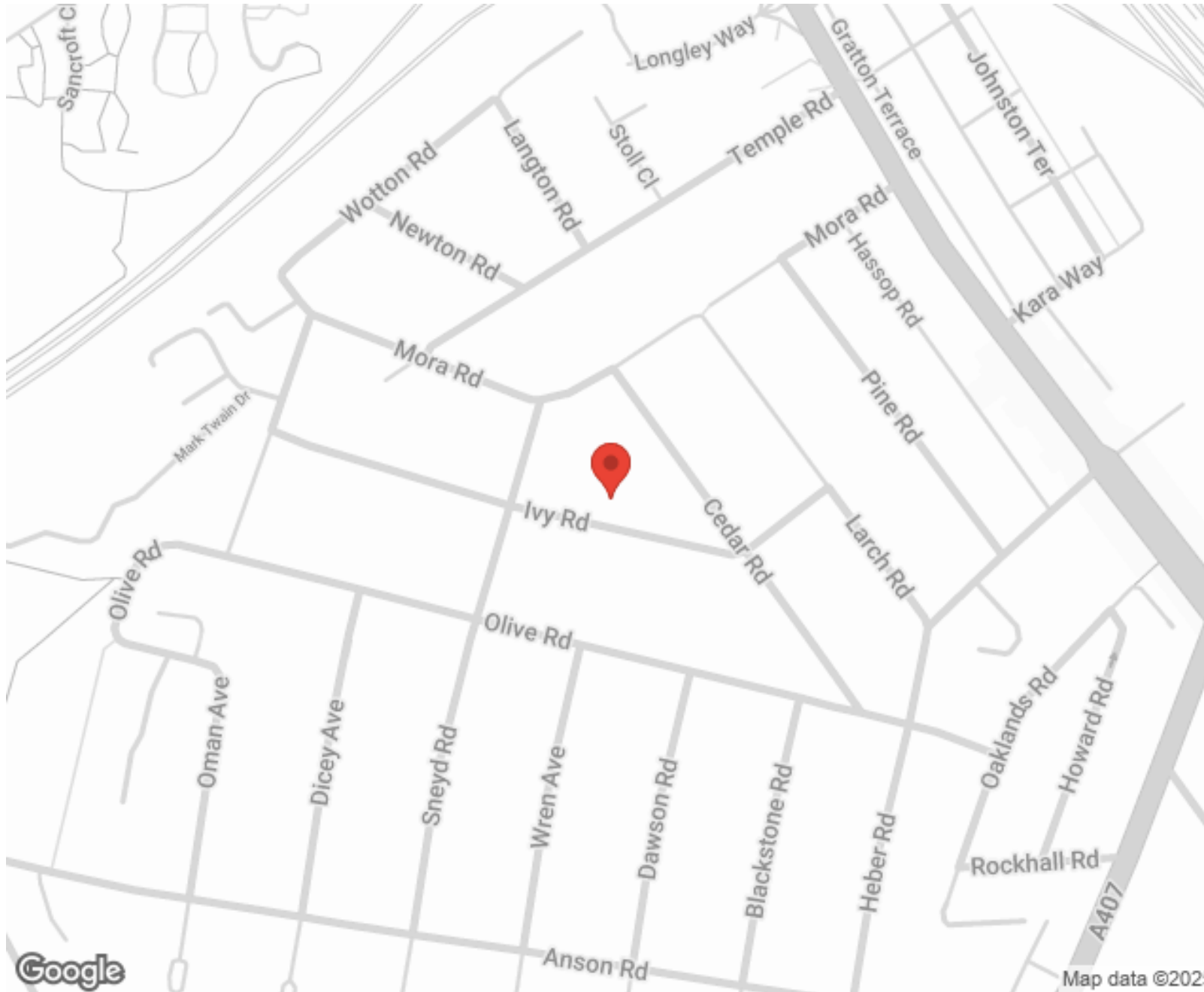
"I used Vita properties to find a flat recently and it was an overall professional, personalised and positive experience. Saira went the extra mile to accommodate to our needs and quick to help us whenever possible."



**MORE INFO, PICTURES,
CONTACT ON
OUR WEBSITE**



"Vita Properties is a very professional agency. My experience with them was incredible and the entire team was very helpful and kind throughout the renting process. I'd highly recommend!"



Score	Energy rating	Current	Potential
92+	A		
81-91	B		
69-80	C		78 C
55-68	D		
39-54	E	53 E	
21-38	F		
1-20	G		

SCAN FOR MORE
GOOGLE REVIEWS






Google



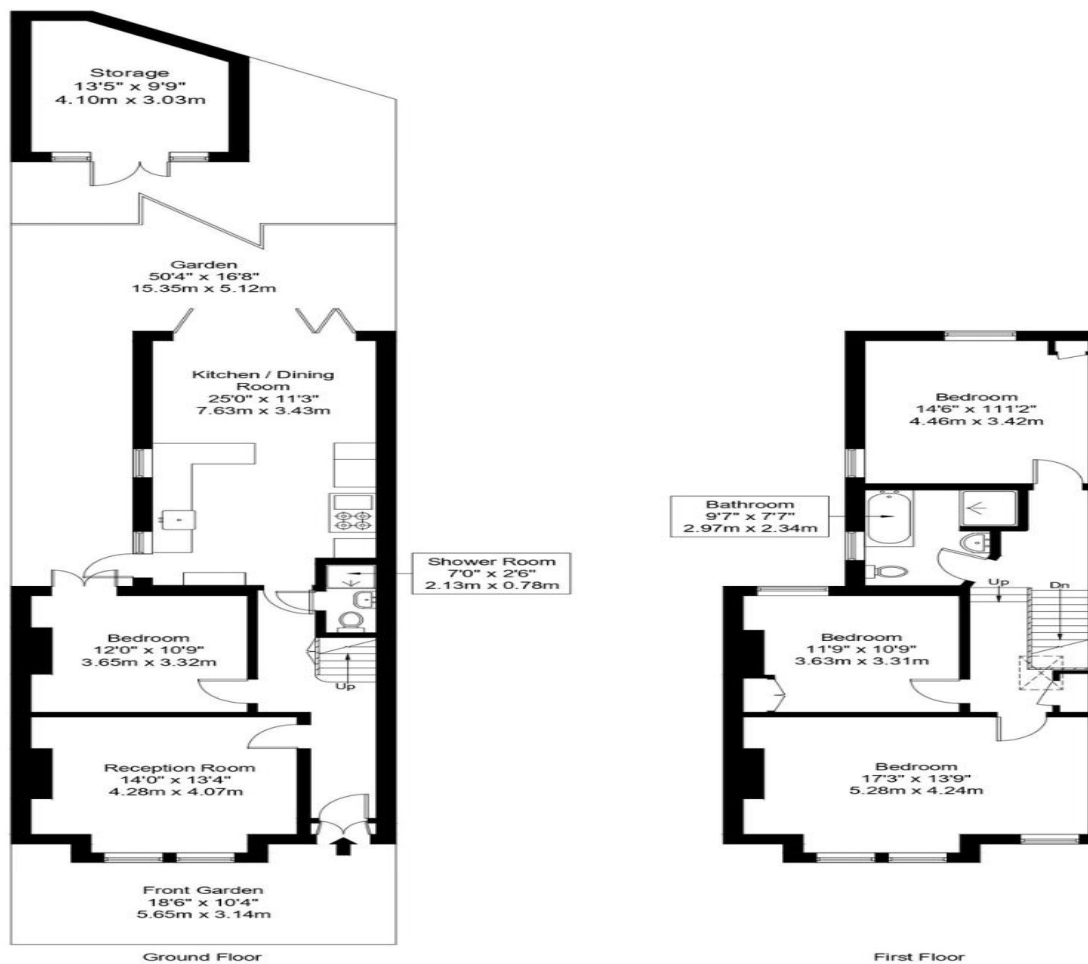
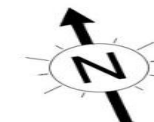
4.9 Stars | 132 Reviews

Find us on social media

-  vitaproperties
-  VitaProperties
-  VitaProperties

Ivy Road, NW2 6SY

Approx Gross Internal Area = 132.8 sq m / 1429 sq ft



Ref :

Copyright

**B L E U
P L A N**

The Floor plan is not to scale and measurements and areas shown are approximate and therefore should be used for illustrative purposes only. The plan has been prepared in accordance with the RICS code of Measuring Practice and whilst we have confidence in the information produced it must not be relied on. Maximum lengths and widths are represented on the floor plan. If there is any aspect of particular importance, you should carry out or commission your own inspection of the property.

Copyright @ BLEUPLAN