



Imperial Square, Chelsea, London SW6 .| £1,100,000

- Beautiful two bedroom house
- Sought after cul de sac
- Front and rear garden
- Two living spaces

- Moments to amenities
- Chain free

"Vita Properties have been tremendously helpful throughout the process of securing/renting my flat. Informative about the property, prompt communication, easy to use dashboard for sharing of information, and pleasant to work with. Highly recommend!"

Kate Brookfield x Vita Properties present this incredibly charming two bedroom cottage on Imperial Square SW6.

A much loved location and highly sought after cul-de sac, Imperial Square sits between Parsons Green and Chelsea, offering residents a quiet oasis with its houses lined with white picket fences all facing a pretty central green space.

Arranged over two storeys and offered in excellent condition, this attractive home includes a sizeable front and rear garden, a formal sitting room with fireplace, a full width kitchen/dining/day room and a beautiful bathroom with shower and separate tube.

Both double bedrooms have wonderfully high ceilings, excellent natural light and fitted storage



Kate Brookfield

✉ Kate.brookfield@vitaproperties.uk
☎ +4478 1365 5431

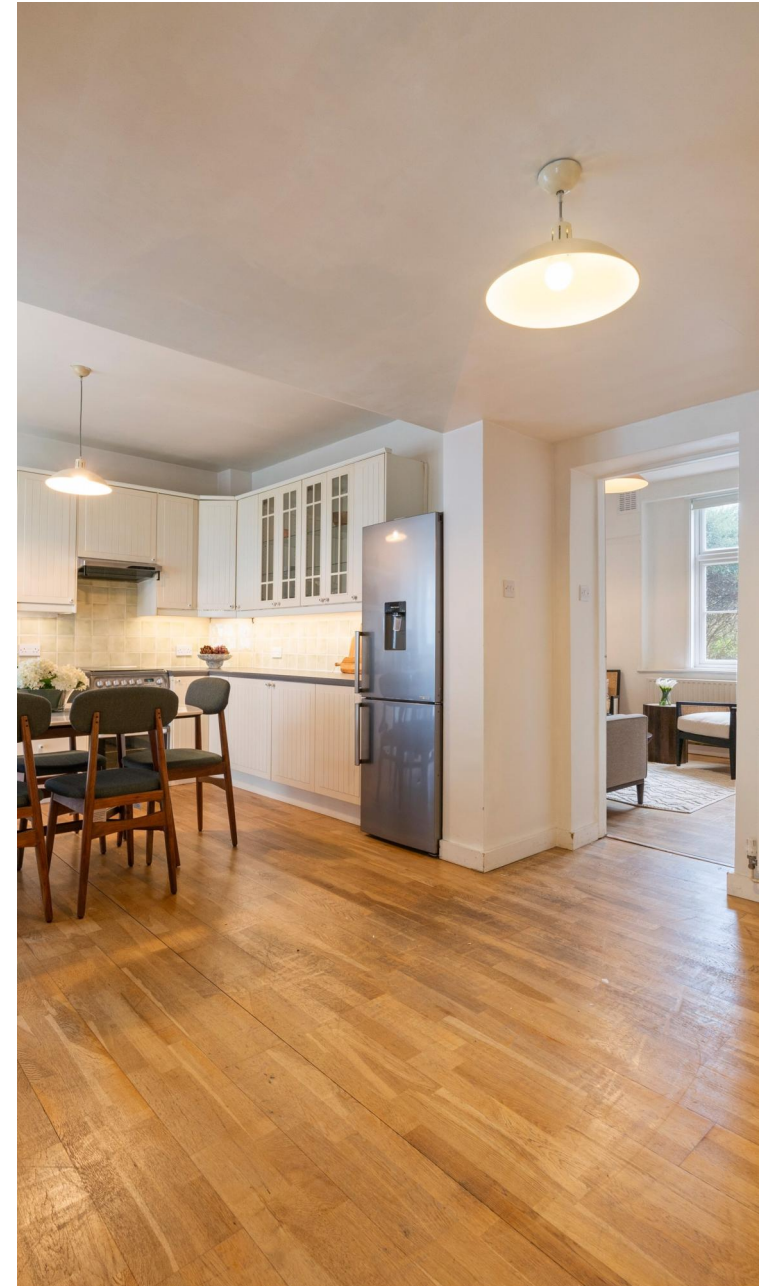


	House
	Freehold
	x 2
	x 2
	x 1

SCAN FOR
A VIDEO
WALKTHROUGH



"I was very impressed with Vita and their network of buyers. When the sale of my flat fell through (twice) they worked extremely hard to find new buyers in a difficult market - thank you!"



"Working with Vita properties has been a smooth experience! No complaints at all. Our letting agent, Diana has been fantastic and very helpful throughout the whole process. I would highly recommend both Vita properties and Diana."



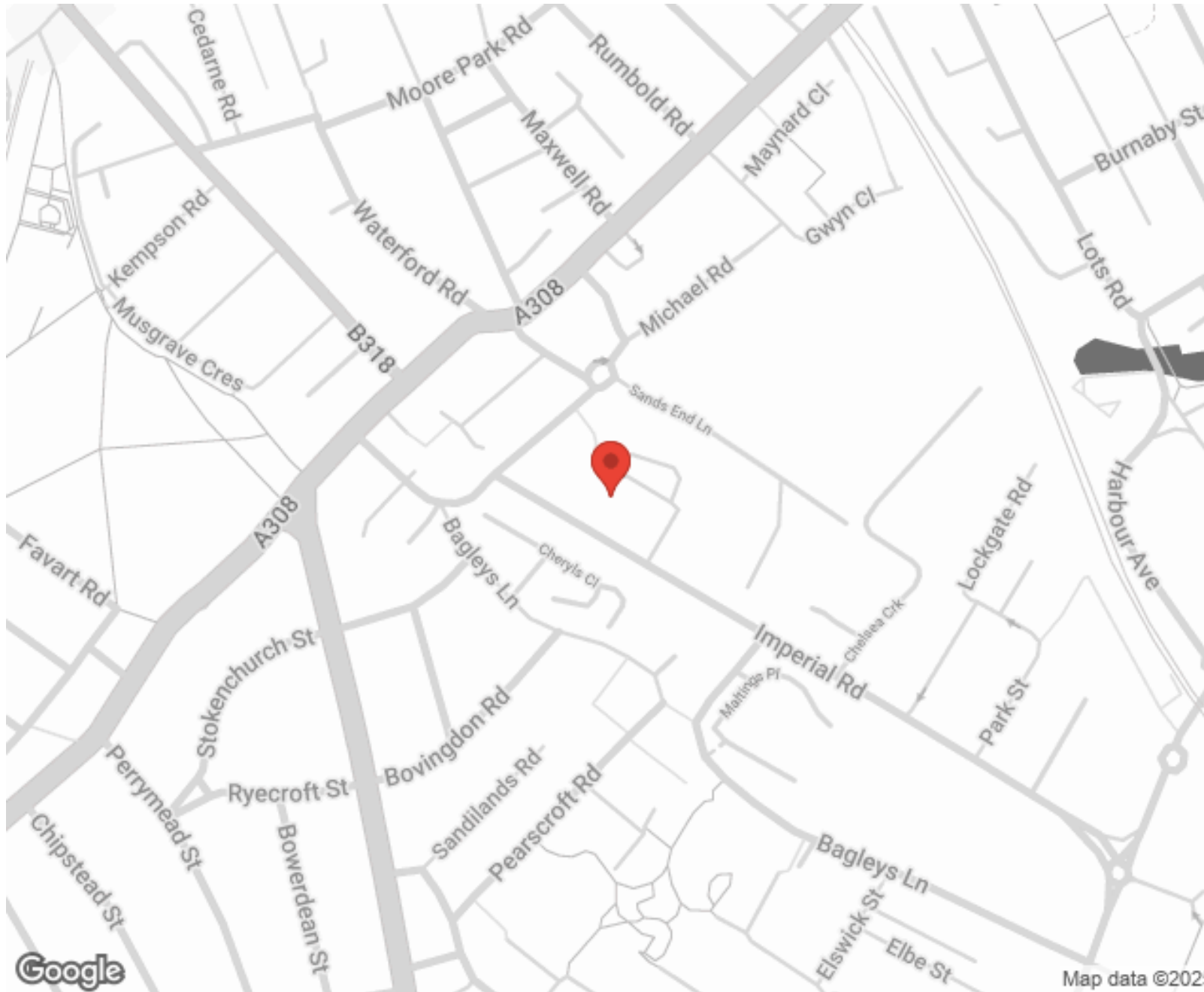
"I used Vita properties to find a flat recently and it was an overall professional, personalised and positive experience. Saira went the extra mile to accommodate to our needs and quick to help us whenever possible."



**MORE INFO, PICTURES,
CONTACT ON
OUR WEBSITE**



"Vita Properties is a very professional agency. My experience with them was incredible and the entire team was very helpful and kind throughout the renting process. I'd highly recommend!"



Score	Energy rating	Current	Potential
92+	A		
81-91	B		82 B
69-80	C		
55-68	D	65 D	
39-54	E		
21-38	F		
1-20	G		

SCAN FOR MORE
GOOGLE REVIEWS






Google



4.9 Stars | 132 Reviews

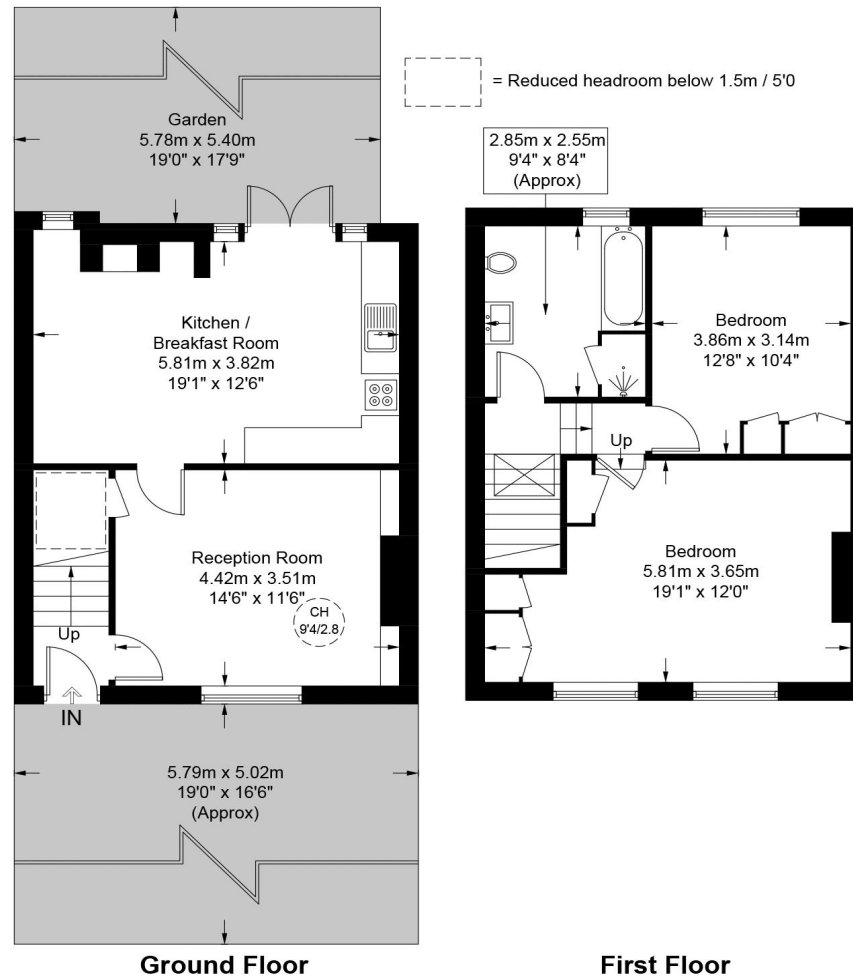
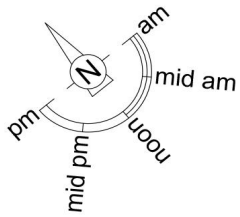
Find us on social media

-  vitaproperties
-  VitaProperties
-  VitaProperties

Imperial Square, SW6

Approximate Gross Internal Area = 942 sq ft / 87.5 sq m

Restricted Height = 17 sq ft / 1.6 sq m



This plan is for layout guidance only and is not drawn to scale unless stated. All dimensions, including windows, doors, and the Total Gross Internal Area (GIA), are approximate. For precise measurements, please consult a qualified architect or surveyor before making any decisions based on this plan.

