



Dartmouth Road, Mapesbury, London NW2 .| £795,000

- Generous lateral apartment
- Chain free
- Original details
- Incredible natural light and green views

- Desirable conservation area

"Vita Properties have been tremendously helpful throughout the process of securing/renting my flat. Informative about the property, prompt communication, easy to use dashboard for sharing of information, and pleasant to work with. Highly recommend!"

Kate Brookfield x Vita Properties present this extremely generous and light filled three bedroom, share of freehold apartment situated within the highly desirable Mapesbury Conservation area.

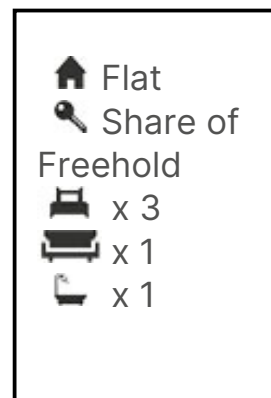
Offering in excess of 1450 sq ft of lateral accommodation, this incredible property offers an opportunity for any interior design enthusiast to create a very special home. With wide, flowing hallways and exceptional natural light, the spacious proportions can be interpreted in many ways and some buyers may see benefit in a slight reconfiguration to maximise the entertaining spaces.



Kate Brookfield

✉ Kate.brookfield@vitaproperties.uk

☎ +4478 1365 5431



"I was very impressed with Vita and their network of buyers. When the sale of my flat fell through (twice) they worked extremely hard to find new buyers in a difficult market - thank you!"

---



"Working with Vita properties has been a smooth experience! No complaints at all. Our letting agent, Diana has been fantastic and very helpful throughout the whole process. I would highly recommend both Vita properties and Diana."

---



"I used Vita properties to find a flat recently and it was an overall professional, personalised and positive experience. Saira went the extra mile to accommodate to our needs and quick to help us whenever possible."

---

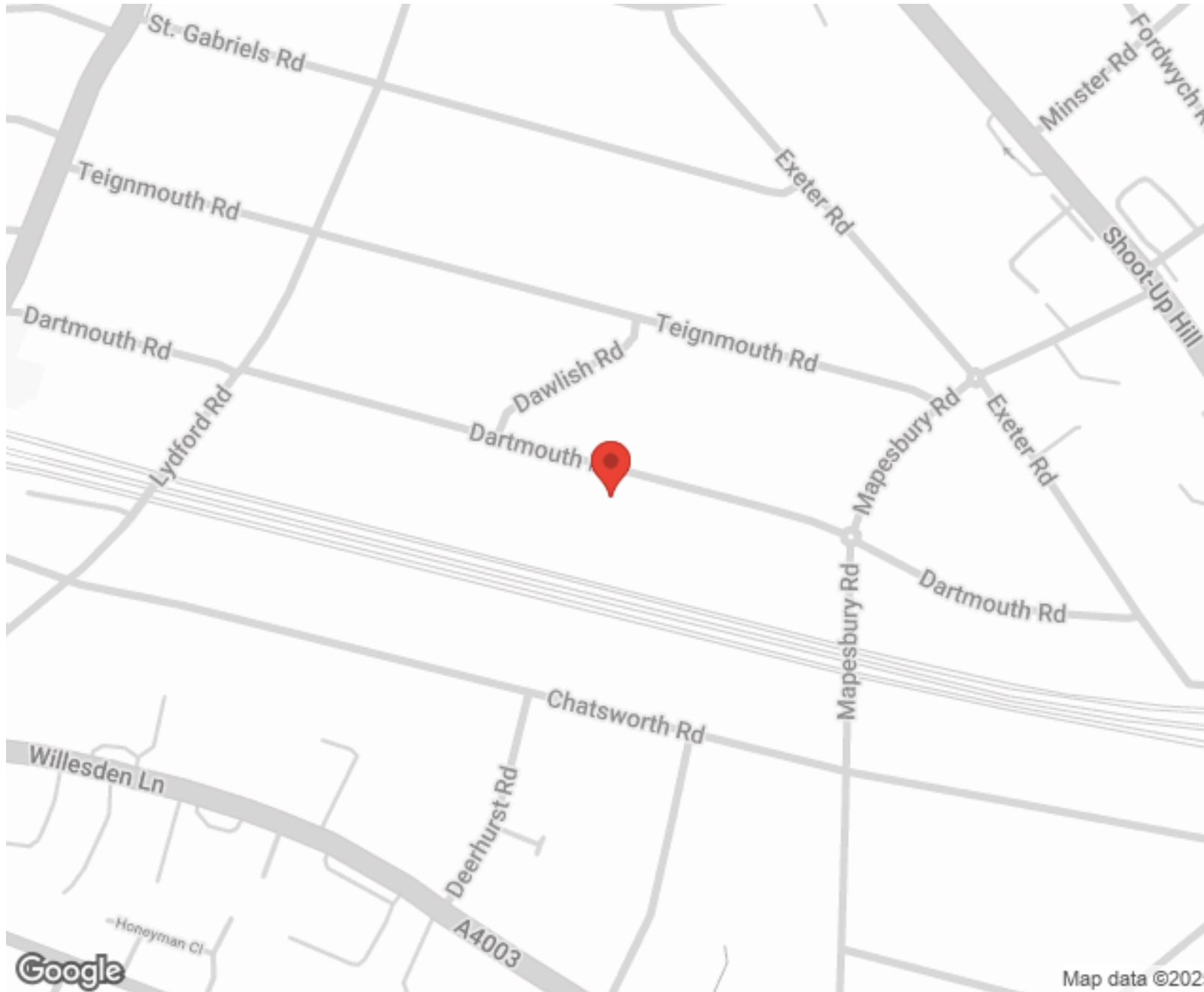


**MORE INFO, PICTURES,  
CONTACT ON  
OUR WEBSITE**



"Vita Properties is a very professional agency. My experience with them was incredible and the entire team was very helpful and kind throughout the renting process. I'd highly recommend!"

---



SCAN FOR MORE  
GOOGLE REVIEWS




Google



4.9 Stars | 132 Reviews

Find us on social media

 vitaproperties

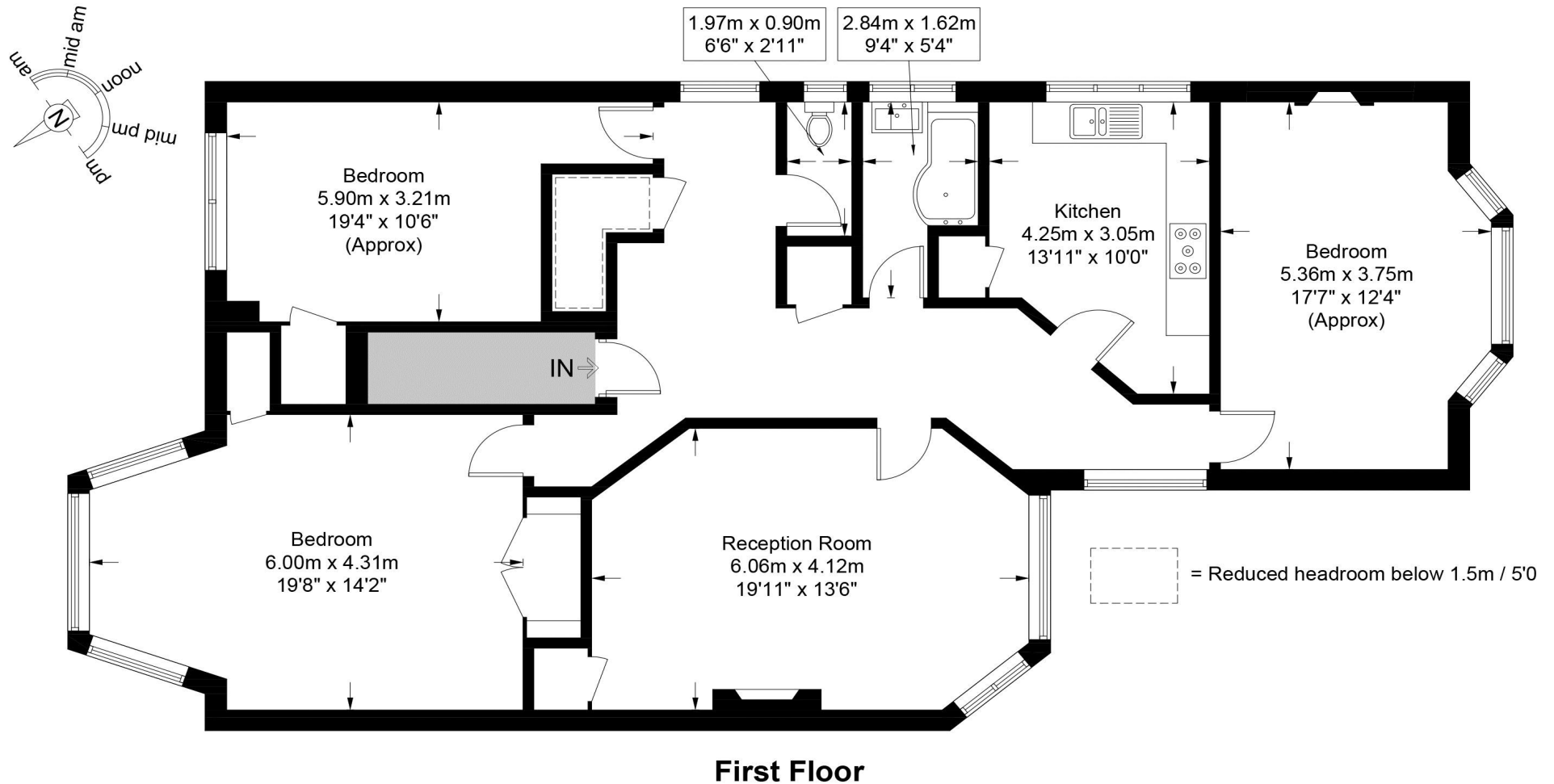
 VitaProperties

 VitaProperties

# Dartmouth Road, NW2

Approximate Gross Internal Area = 1458 sq ft / 135.5 sq m

Restricted Height = 21 sq ft / 2.0 sq m



This plan is for layout guidance only and is not drawn to scale unless stated. All dimensions, including windows, doors, and the Total Gross Internal Area (GIA), are approximate. For precise measurements, please consult a qualified architect or surveyor before making any decisions based on this plan.



Certified  
Property  
Measurer