



Fairfax Place, South Hampstead, London NW6 | £7,000

- Excellent Condition
- Kitchen/Breakfast Room
- Close to Public Transport
- Tiled Flooring

- Furnished
- Available 06 January 2025



"Vita Properties have been tremendously helpful throughout the process of securing/renting my flat. Informative about the property, prompt communication, easy to use dashboard for sharing of information, and pleasant to work with. Highly recommend!"

Nestled in a peaceful cobbled mews in South Hampstead, this beautifully refurbished four-bedroom, two-bathroom home offers contemporary living across 1,448 sq ft. Designed with modern lifestyles in mind, the property boasts a stylishly appointed interior and an enviable location close to excellent amenities and transport links. The heart of the home is a stunning fully fitted kitchen and diner, ideal for both casual meals and entertaining. The property also features a bright and spacious double-aspect reception room, enhanced by sleek modern lighting to create a welcoming atmosphere. Each of the four bedrooms is generously proportioned, providing ample space for relaxation or work-from-home needs, while the two well-finished bathrooms ensure comfort and convenience for all. Fairfax Place enjoys a sought-after location, providing easy access to the vibrant shops, cafes, and restaurants of nearby Swiss Cottage and Finchley Road.

Excellent transport connections are within walking distance, including Swiss Cottage station (Jubilee line) and Finchley Road station (Jubilee and Metropolitan lines), ensuring seamless journeys to central London and beyond. This exceptional rental opportunity is perfect for families or professionals seeking a stylish, low-maintenance home in a prime London location. Offering the best of modern living in a tranquil setting, this property is ready to welcome its next residents.

	House
	Available to Let
	x 4
	x 1
	x 2

SCAN FOR A VIDEO WALKTHROUGH



Jonathan Singer

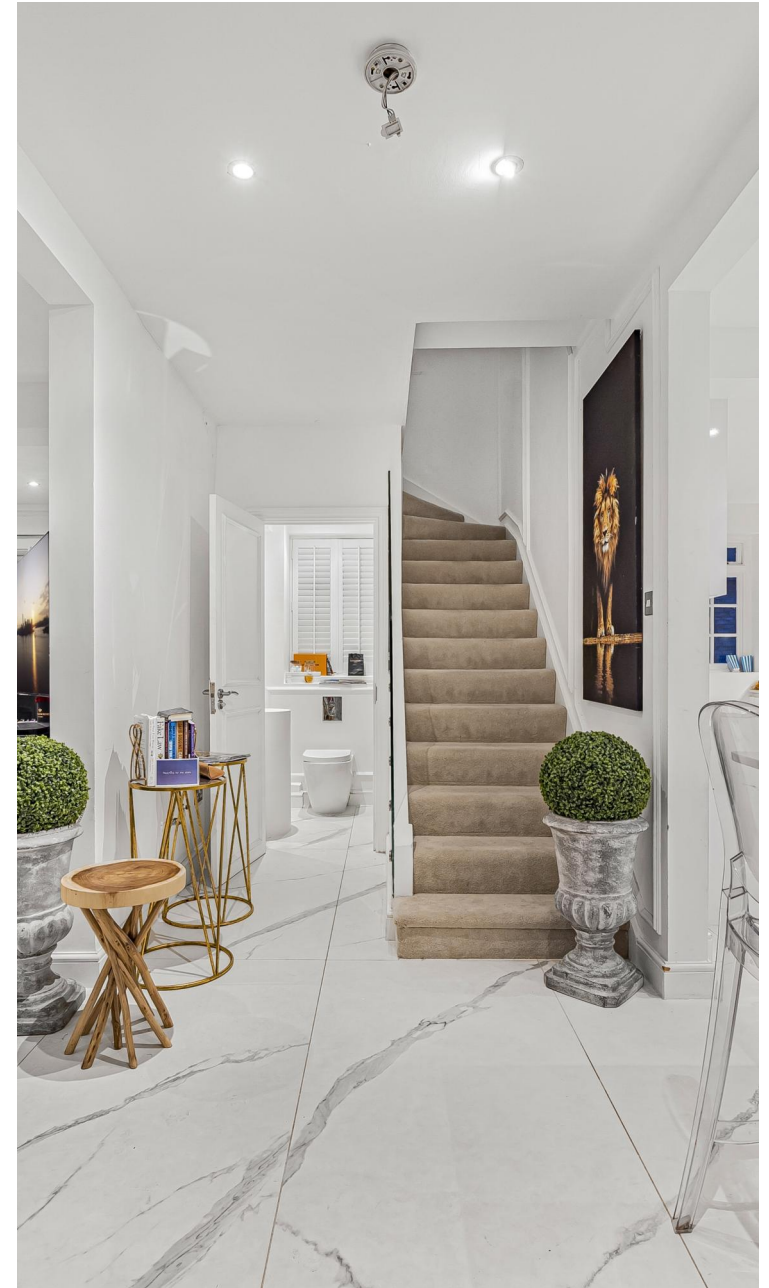
 [jonathan.singer@vitaproperties.uk](mailto:jonathan.singer@vitaproperties.uk)

 +4478 8428 6414



"I was very impressed with Vita and their network of buyers. When the sale of my flat fell through (twice) they worked extremely hard to find new buyers in a difficult market - thank you!"

---





"Working with Vita properties has been a smooth experience! No complaints at all. Our letting agent, Diana has been fantastic and very helpful throughout the whole process. I would highly recommend both Vita properties and Diana."

---





"I used Vita properties to find a flat recently and it was an overall professional, personalised and positive experience. Saira went the extra mile to accommodate to our needs and quick to help us whenever possible."

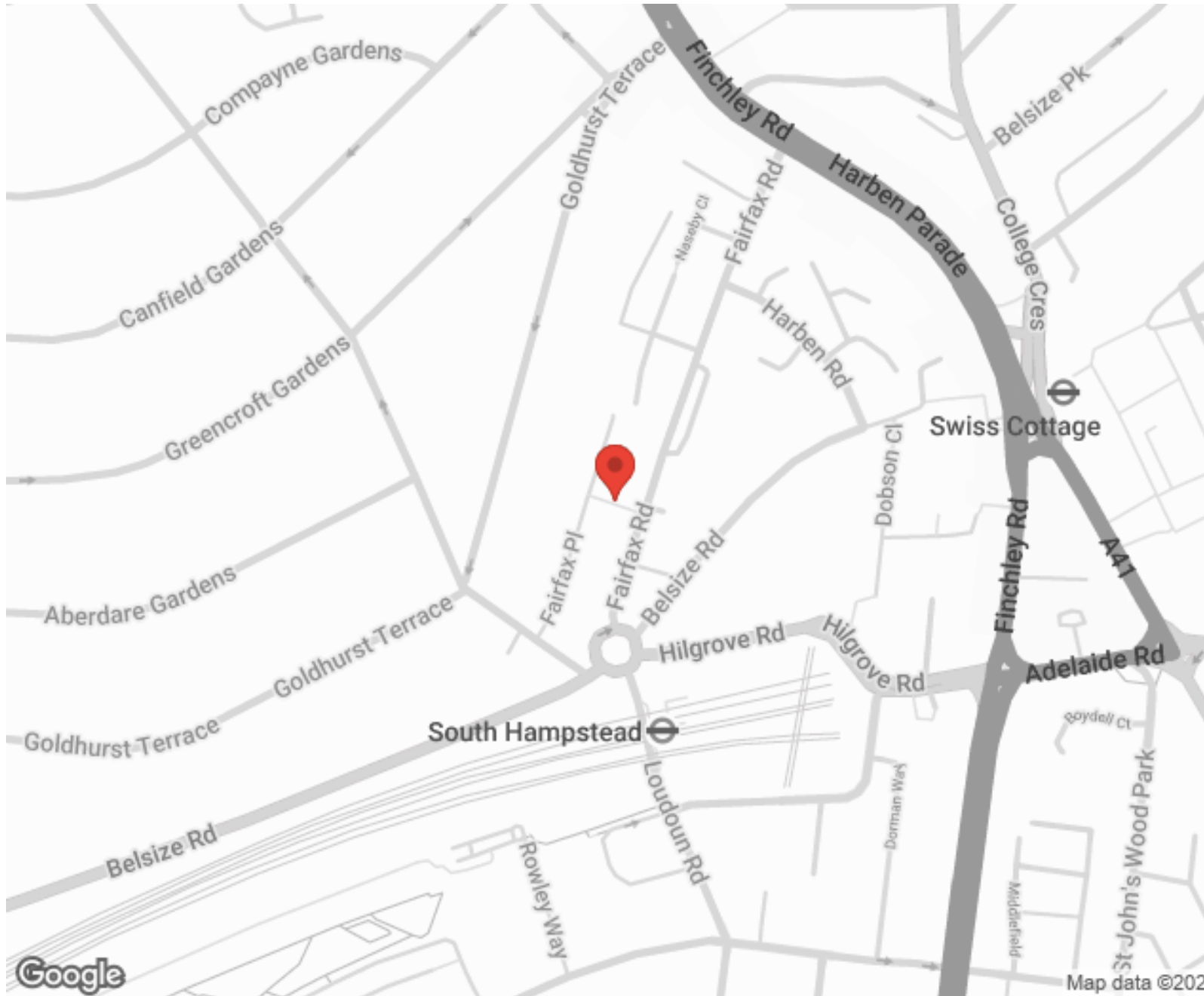
---



**MORE INFO, PICTURES,  
CONTACT ON  
OUR WEBSITE**



"Vita Properties is a very professional agency. My experience with them was incredible and the entire team was very helpful and kind throughout the renting process. I'd highly recommend!"






Score	Energy rating	Current	Potential
92+	A		
81-91	B		
69-80	C		80 C
55-68	D	62 D	
39-54	E		
21-38	F		
1-20	G		

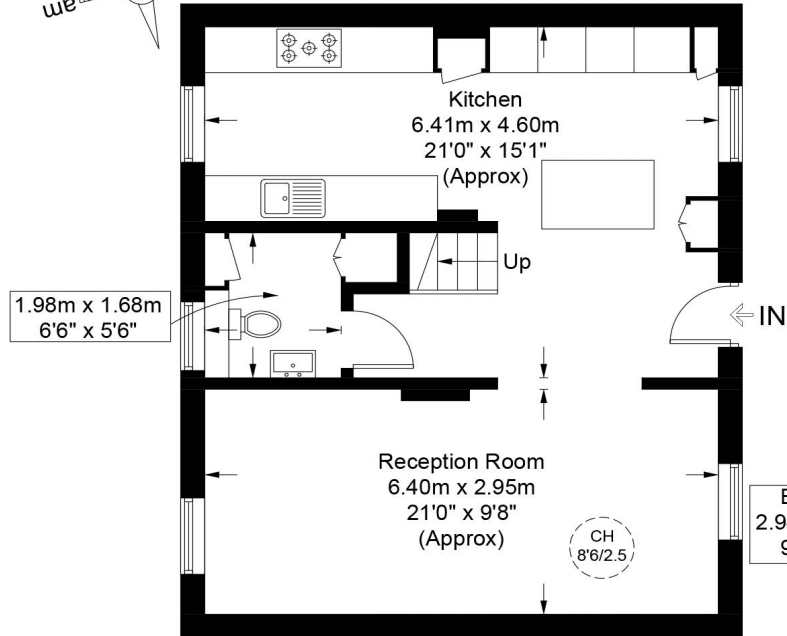
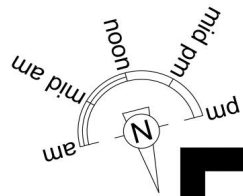
SCAN FOR MORE GOOGLE REVIEWS



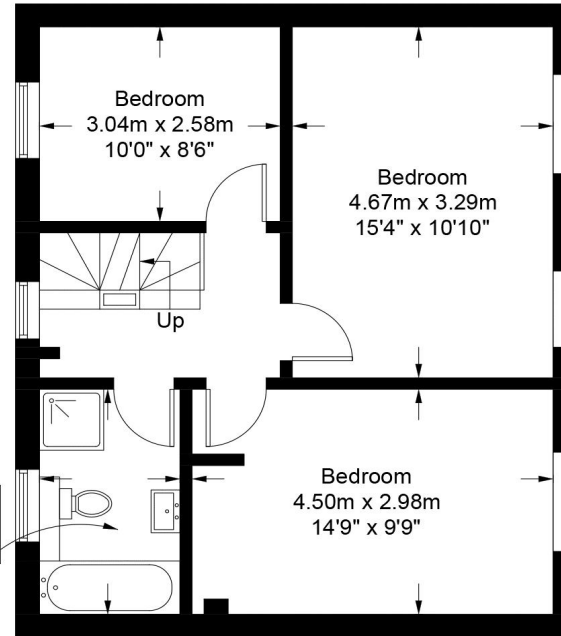
Google  
★★★★★  
4.9 Stars | 132 Reviews

Find us on social media

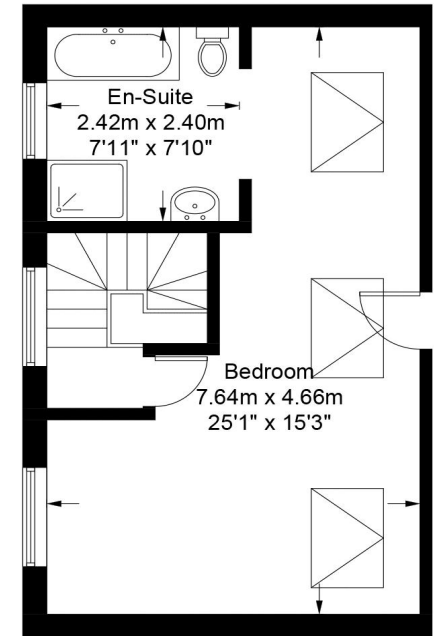
-  vitaproperties
-  VitaProperties
-  VitaProperties



Ground Floor



First Floor



Second Floor

This plan is for layout guidance only and is not drawn to scale unless stated. All dimensions, including windows, doors, and the Total Gross Internal Area (GIA), are approximate. For precise measurements, please consult a qualified architect or surveyor before making any decisions based on this plan.



Certified  
Property  
Measurer