



Ridge Road, Childs Hill, London NW2 .| £1,600,000




- Detached House
- Spacious Reception Room
- Four Bedrooms
- Three Bathrooms

- Secluded Patio Garden
- Terrace Situated On The Top Floor
- Off Street Parking For Two Cars

"Vita Properties have been tremendously helpful throughout the process of securing/renting my flat. Informative about the property, prompt communication, easy to use dashboard for sharing of information, and pleasant to work with. Highly recommend!"



A meticulously designed detached family residence offering in excess of 2200sq ft, nestled amidst the picturesque slopes of Hampstead. This home offers an exquisite blend of elegance and tranquility throughout. The property showcases exceptional entertaining spaces, including three/four spacious double bedrooms with built-in wardrobes and three bathrooms (two of which are en-suite, guest W/c-cloakroom). The welcoming reception room seamlessly connects to the contemporary kitchen/dining area, which in turn leads to a conservatory (Further reception room) leading out to a private rear patio garden. The second floor offers a remarkable open space currently utilized as an additional sitting room "with Terrace" with the possibility to convert it into an extra bedroom with en-suite bathroom, already equipped with plumbing. Additional features of this rarely available residence, ample storage, new curtains throughout and off-street parking for two vehicles.

Ridge Road boasts an enviable location within a half-mile radius of the expansive Hampstead Heath, while also offering easy access to the excellent transportation links of Finchley Road and Golders Green.

-  Flat
-  Freehold
-  x 4
-  x 2
-  x 3



Malcolm Ornstein

 malcolm.ornstein@vitaproperties.uk
 +4479 5647 8618



"I was very impressed with Vita and their network of buyers. When the sale of my flat fell through (twice) they worked extremely hard to find new buyers in a difficult market - thank you!"



"Working with Vita properties has been a smooth experience! No complaints at all. Our letting agent, Diana has been fantastic and very helpful throughout the whole process. I would highly recommend both Vita properties and Diana."



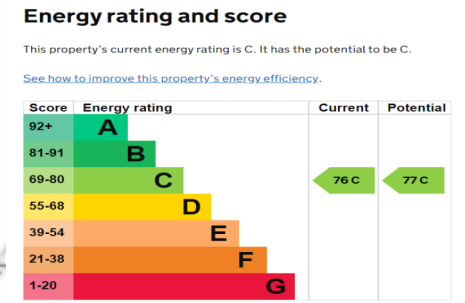
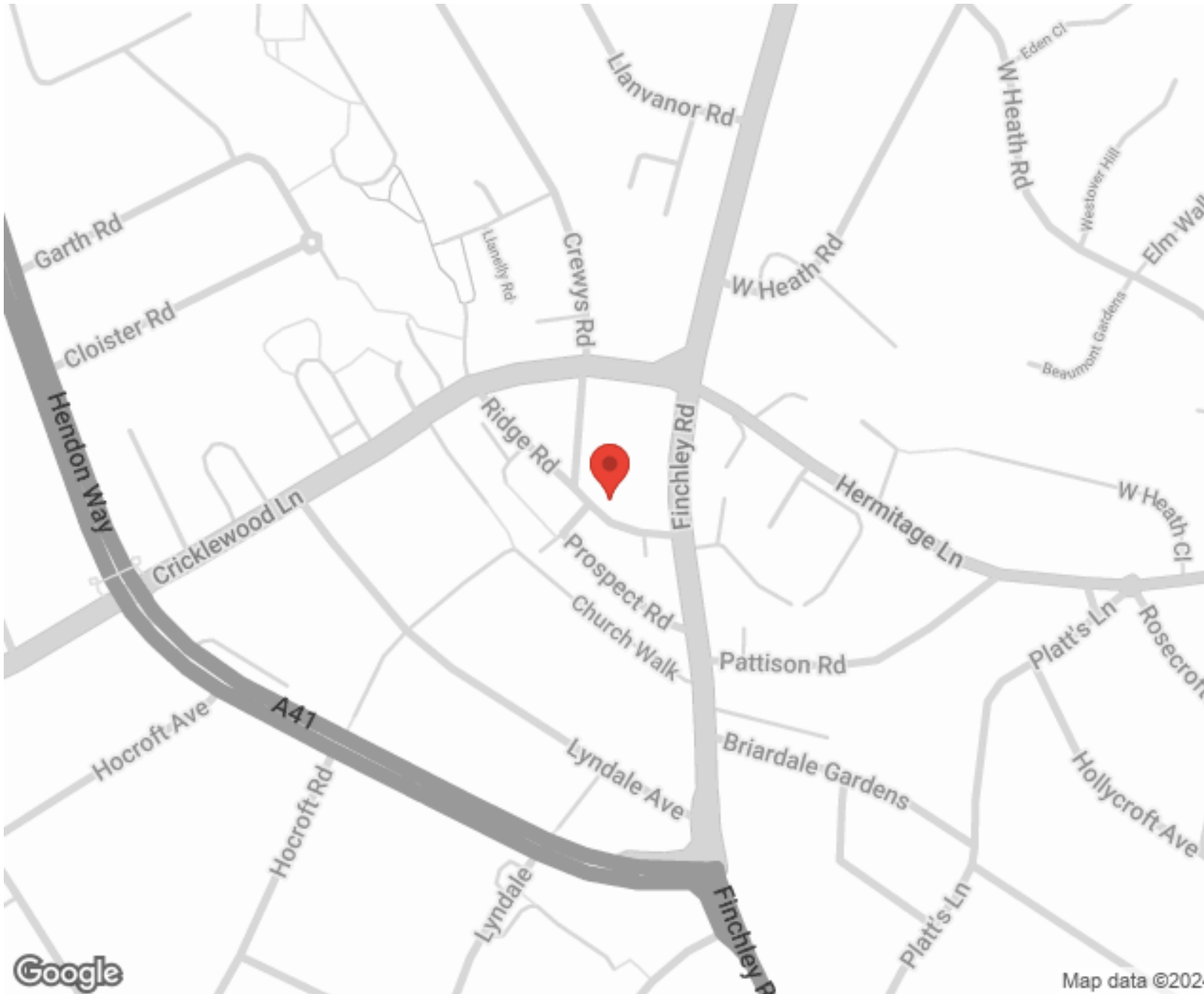
"I used Vita properties to find a flat recently and it was an overall professional, personalised and positive experience. Saira went the extra mile to accommodate to our needs and quick to help us whenever possible."



**MORE INFO, PICTURES,
CONTACT ON
OUR WEBSITE**



"Vita Properties is a very professional agency. My experience with them was incredible and the entire team was very helpful and kind throughout the renting process. I'd highly recommend!"



The graph shows this property's current and potential energy rating.

SCAN FOR MORE
GOOGLE REVIEWS

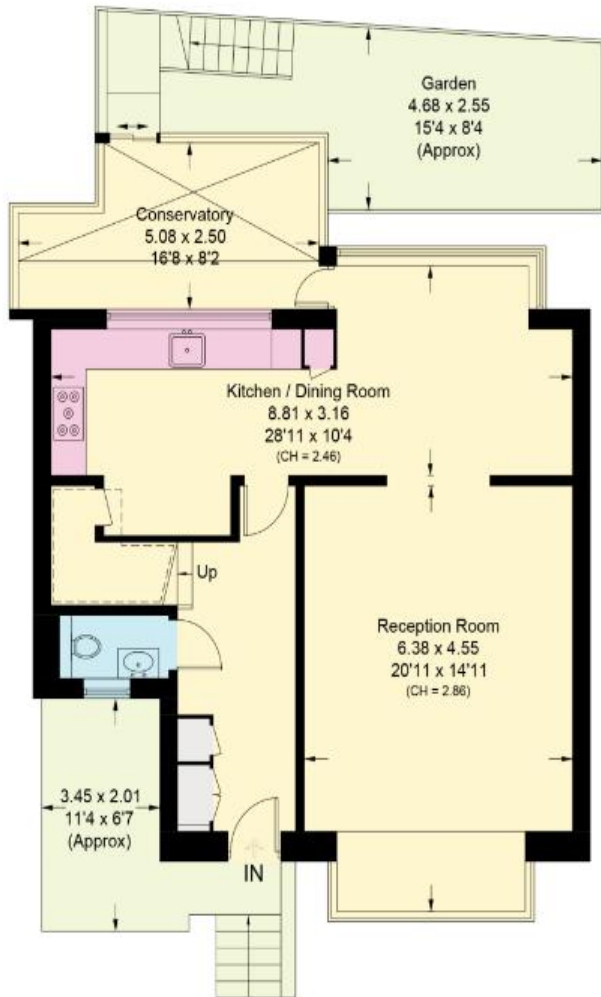
Google
★★★★★
4.9 Stars | 132 Reviews

Find us on social media

- vitaproperties
- VitaProperties
- VitaProperties

Ridge Road, NW2

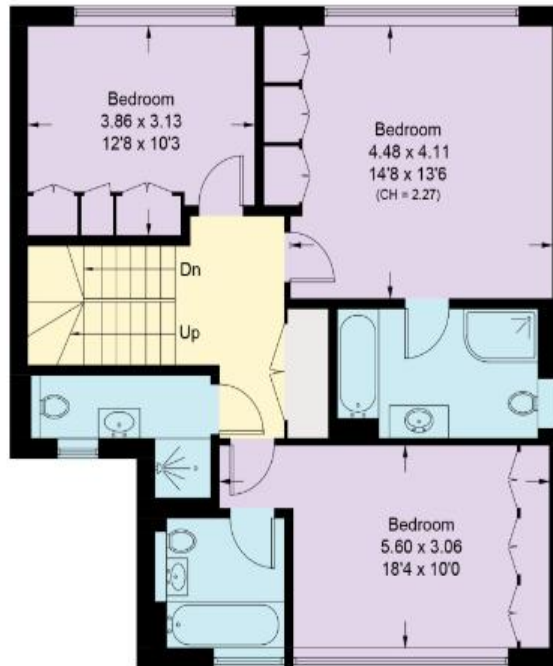
Approximate Area = 205.3 sq m / 2210 sq ft
Including Limited Use Area (20.8 sq m / 224 sq ft)



Raised Ground Floor

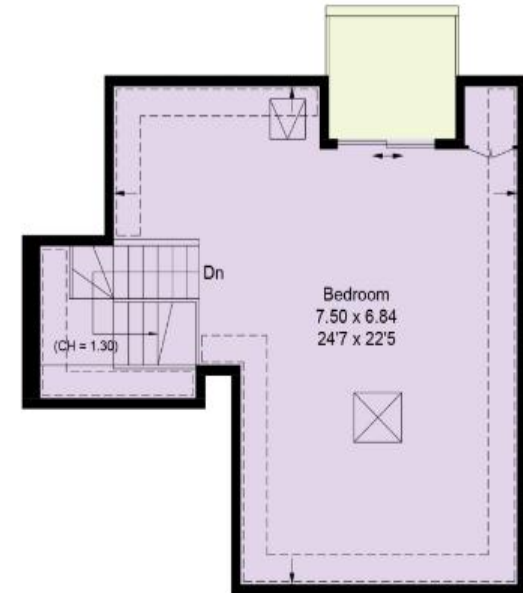
Approximate Area = 82.4 sq m / 887 sq ft
Including Limited Use Area (7.4 sq m / 80 sq ft)

= Reduce head height below 1.5m



First Floor

Approximate Area = 77.4 sq m / 833 sq ft
Including Limited Use Area (1.6 sq m / 17 sq ft)



Second Floor

Approximate Area = 45.5 sq m / 490 sq ft
Including Limited Use Area (11.8 sq m / 127 sq ft)

Surveyed and drawn in accordance with the International property measurements standards (IPMS 2: Residential) Not drawn to scale unless stated.
Whilst every care is taken in the preparation of this plan, please check all dimensions, shapes and compass bearings before making any decisions reliant upon them.