



Boydell Court, St. Johns Wood Park, London, NW8 .| £5,600

- 3 Bedrooms
- 3 Bathrooms
- Newly Refurbished
- Available Furnished

- 1,087 sq. ft.
- Available Now!

"Vita Properties have been tremendously helpful throughout the process of securing/renting my flat. Informative about the property, prompt communication, easy to use dashboard for sharing of information, and pleasant to work with. Highly recommend!"

A stunning three bedroom flat, set within a secure gated development.

Recently refurbished with bespoke interior design this three bed, three bath property offers an abundance of space. Comprising of a bright living room, separate kitchen with all modern Bosch appliances and breakfast/dining room. You will find three good size bedrooms and a family bathroom.

The property is within walking distance of St John's Wood and Swiss Cottage Station



Oliver Kent

✉ oliver.kent@vitaproperties.uk
☎ +4477 7274 0351



🏠	Flat
🔑	Available to Let
🛏️	x 3
🛋️	x 1
🚿	x 3



"I was very impressed with Vita and their network of buyers. When the sale of my flat fell through (twice) they worked extremely hard to find new buyers in a difficult market - thank you!"



"Working with Vita properties has been a smooth experience! No complaints at all. Our letting agent, Diana has been fantastic and very helpful throughout the whole process. I would highly recommend both Vita properties and Diana."



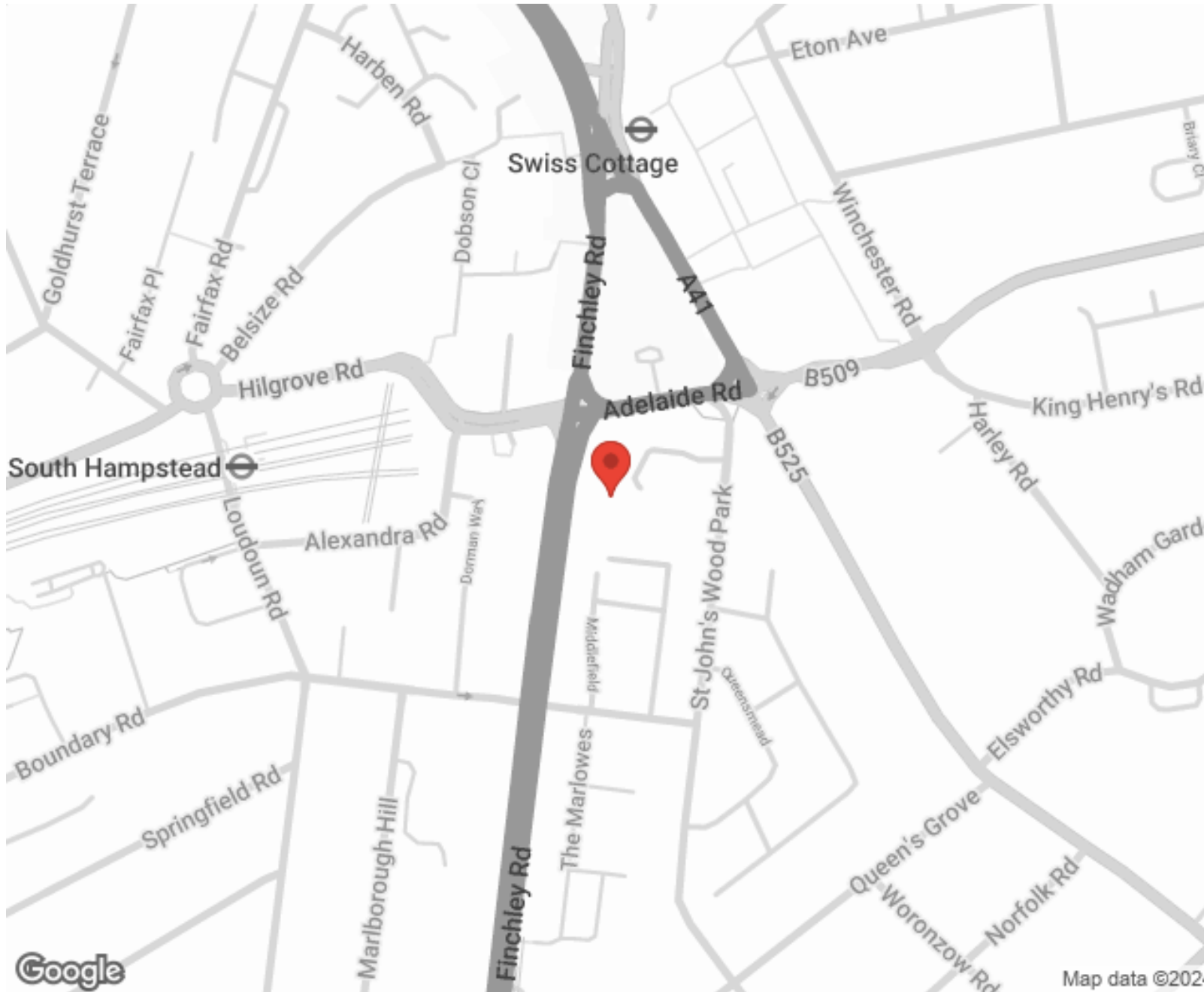
"I used Vita properties to find a flat recently and it was an overall professional, personalised and positive experience. Saira went the extra mile to accommodate to our needs and quick to help us whenever possible."



**MORE INFO, PICTURES,
CONTACT ON
OUR WEBSITE**



"Vita Properties is a very professional agency. My experience with them was incredible and the entire team was very helpful and kind throughout the renting process. I'd highly recommend!"



SCAN FOR MORE
GOOGLE REVIEWS






Google

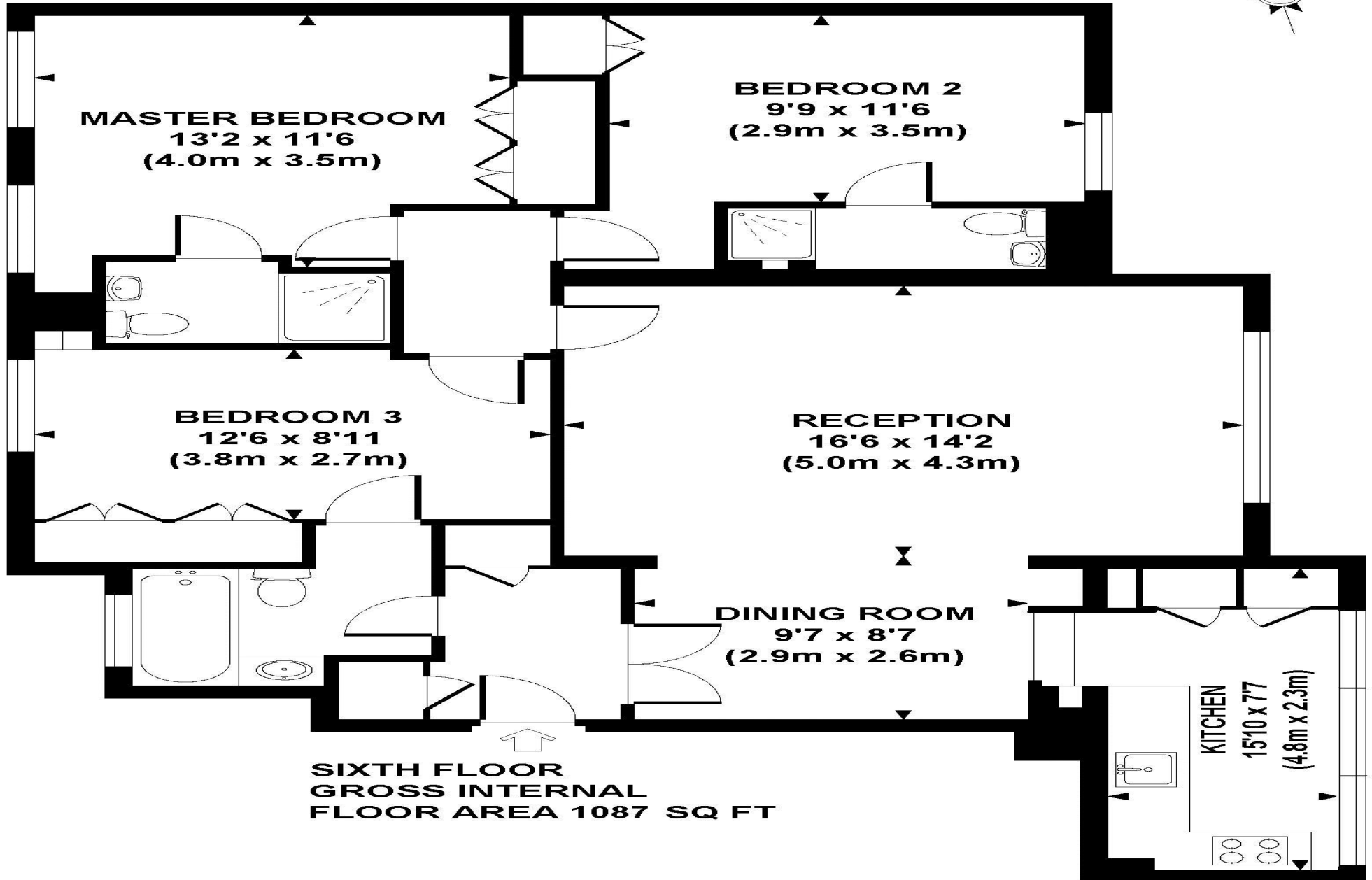


4.9 Stars | 132 Reviews

Find us on social media

-  vitaproperties
-  VitaProperties
-  VitaProperties

BOYDELL COURT
Approximate Gross Internal Area 1087 sq ft / 101 sq m



Although every attempt has been made to ensure accuracy, all measurements are approximate. The floor plan's for illustrative purposes only and not to scale. Measured in accordance to RICS standards. DE-PHOTOGRAPHY.NET