



Kidderpore Gardens, Hampstead, London, NW3 .| £875,000

- Leasehold; plus share of Freehold
- Private balcony
- Chain free
- Newly refurbished

- Balcony

"Vita Properties have been tremendously helpful throughout the process of securing/renting my flat. Informative about the property, prompt communication, easy to use dashboard for sharing of information, and pleasant to work with. Highly recommend!"

A recently refurbished, generously proportioned two bedroom Share of Freehold apartment in excess of 1200sqft (incl. restricted height area) with a private South-facing terrace arranged over the entire second floor of an elegant Edwardian house on one of the most sought-after roads in Hampstead. The apartment is rich with natural light and retains many of its period features, hardwood oak flooring and new cream carpets, contemporary fixtures and ample storage space throughout.

The property comprises a large and bright reception and dining room with a fireplace, kitchen with modern appliances and access to the decked terrace offering stunning views, storage room, two generously proportioned bedrooms and a bath and shower room



Oliver Kent

✉ oliver.kent@vitaproperties.uk
☎ +4477 7274 0351



🏠	Flat
🔑	Share of Freehold
🛏️	x 2
🛋️	x 1
🚿	x 1



"I was very impressed with Vita and their network of buyers. When the sale of my flat fell through (twice) they worked extremely hard to find new buyers in a difficult market - thank you!"



"Working with Vita properties has been a smooth experience! No complaints at all. Our letting agent, Diana has been fantastic and very helpful throughout the whole process. I would highly recommend both Vita properties and Diana."



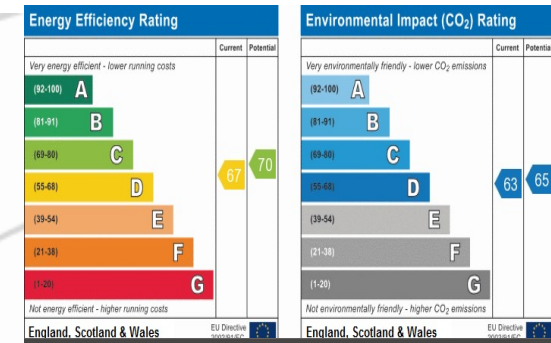
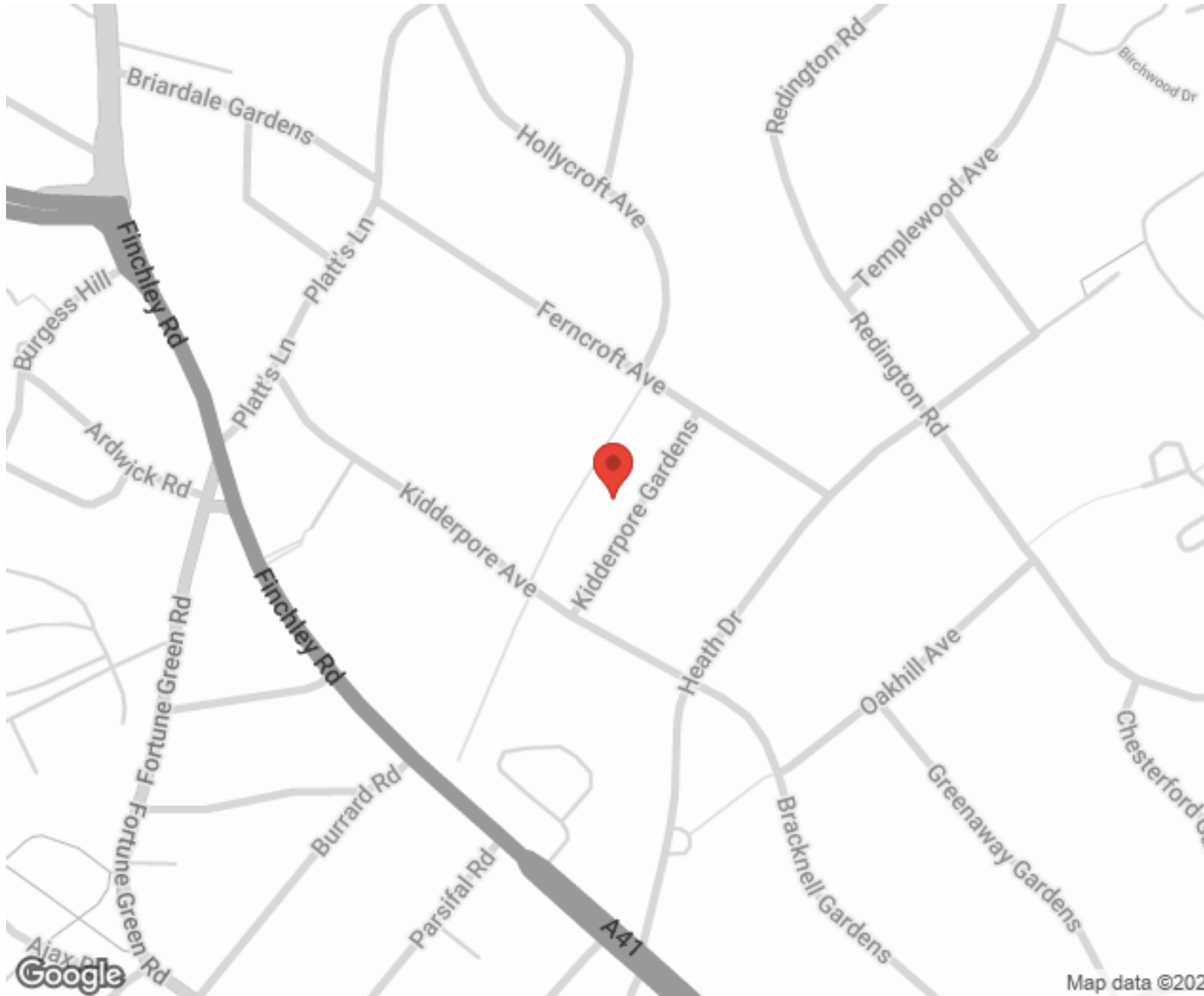
"I used Vita properties to find a flat recently and it was an overall professional, personalised and positive experience. Saira went the extra mile to accommodate to our needs and quick to help us whenever possible."



**MORE INFO, PICTURES,
CONTACT ON
OUR WEBSITE**



"Vita Properties is a very professional agency. My experience with them was incredible and the entire team was very helpful and kind throughout the renting process. I'd highly recommend!"

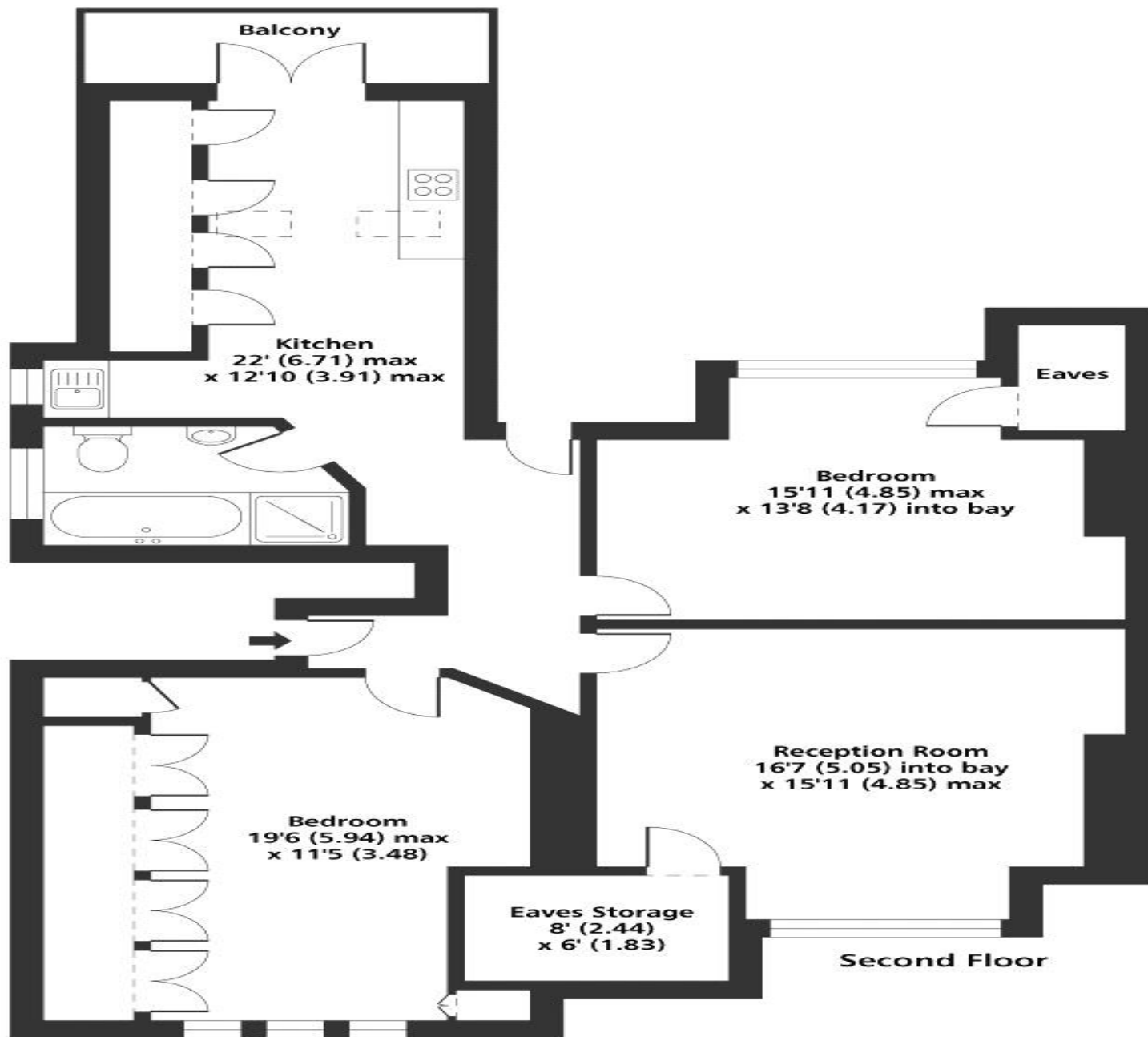


SCAN FOR MORE GOOGLE REVIEWS

Google
★★★★★
4.9 Stars | 132 Reviews

Find us on social media

- vitaproperties
- VitaProperties
- VitaProperties



Kidderpore Gardens NW3
Total internal floor area (Includes restricted head height)
1169 sq ft 108.6 sq metres