



Palace Court, Finchley Road, Hampstead, London NW3 .| £1,000,000

- IN NEED OF REFURBISHMENT
- Over 2000 sq ft
- Balconies
- Lift

- Amazing Views
- Chain free

"Vita Properties have been tremendously helpful throughout the process of securing/renting my flat. Informative about the property, prompt communication, easy to use dashboard for sharing of information, and pleasant to work with. Highly recommend!"

IN NEED OF REFURBISHMENT

We are delighted to offer this spacious unmodernised apartment on the 3RD floor of a fine and well maintained mansion block of only 17 flats. Palace Court occupies a prominent position on the corner of Finchley Road and Frognal Lane. Spanning over 2,000 sq ft, this family sized apartment with flexible accommodation.

Located in a convenient position, Palace Court is close to shops, schools and transport amenities of Finchley Road, West Hampstead and Hampstead Village.

Finchley Road Station (Jubilee & Metropolitan Lines), Finchley & Frognal Overground Rail Station, West Hampstead Thames Link as well as Hampstead Station (Northern Line) are all within walking distance



Oliver Kent

✉ oliver.kent@vitaproperties.uk
☎ +4477 7274 0351



🏠 Flat
🔑 Leasehold
🛋️ x 4
📺 x 2
🚿 x 3

SCAN FOR
A VIDEO
WALKTHROUGH



"I was very impressed with Vita and their network of buyers. When the sale of my flat fell through (twice) they worked extremely hard to find new buyers in a difficult market - thank you!"



"Working with Vita properties has been a smooth experience! No complaints at all. Our letting agent, Diana has been fantastic and very helpful throughout the whole process. I would highly recommend both Vita properties and Diana."



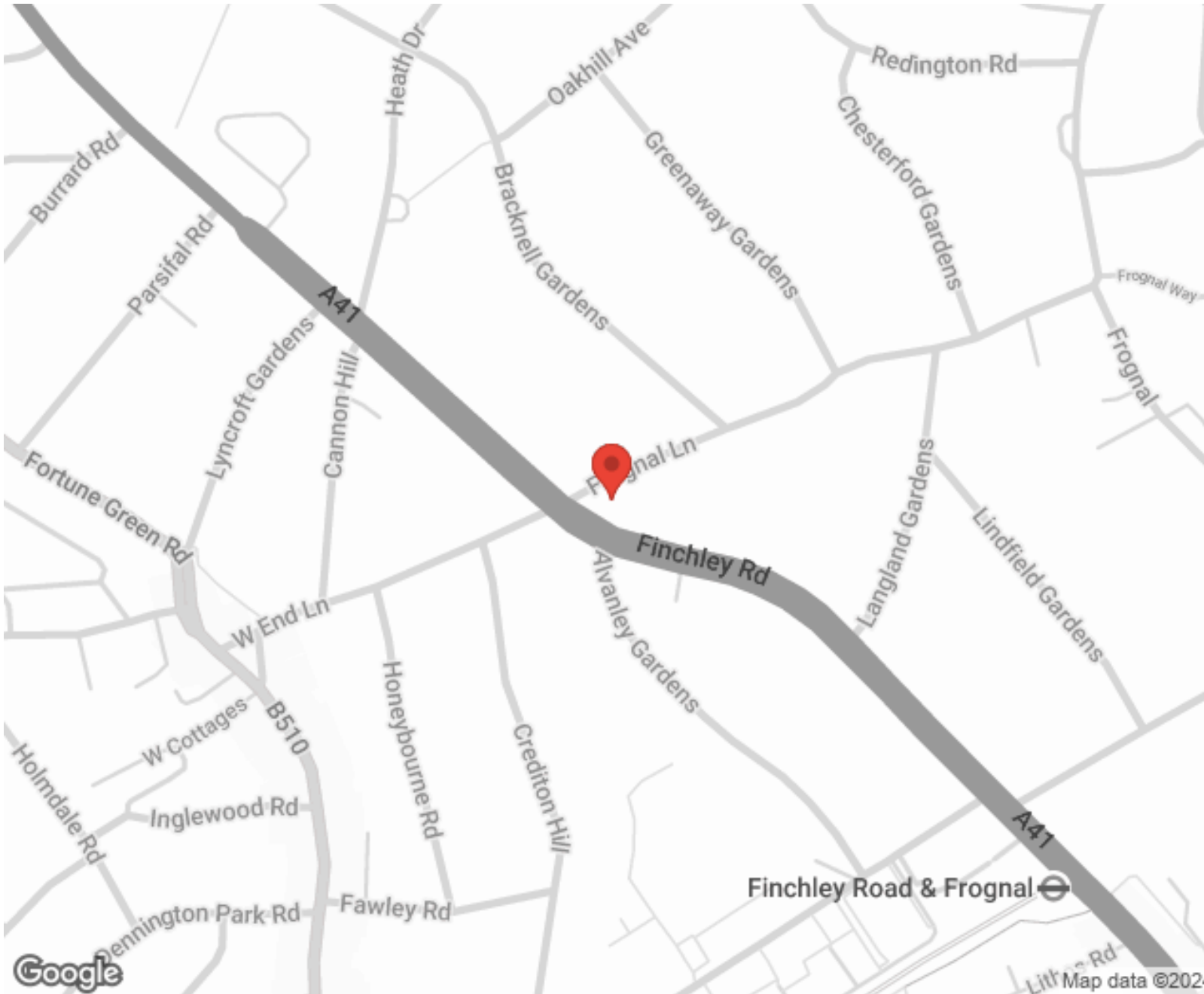
"I used Vita properties to find a flat recently and it was an overall professional, personalised and positive experience. Saira went the extra mile to accommodate to our needs and quick to help us whenever possible."



**MORE INFO, PICTURES,
CONTACT ON
OUR WEBSITE**




"Vita Properties is a very professional agency. My experience with them was incredible and the entire team was very helpful and kind throughout the renting process. I'd highly recommend!"






Score	Energy rating	Current	Potential
92+	A		
81-91	B		85 B
69-80	C	77 C	
55-68	D		
39-54	E		
21-38	F		
1-20	G		

SCAN FOR MORE GOOGLE REVIEWS



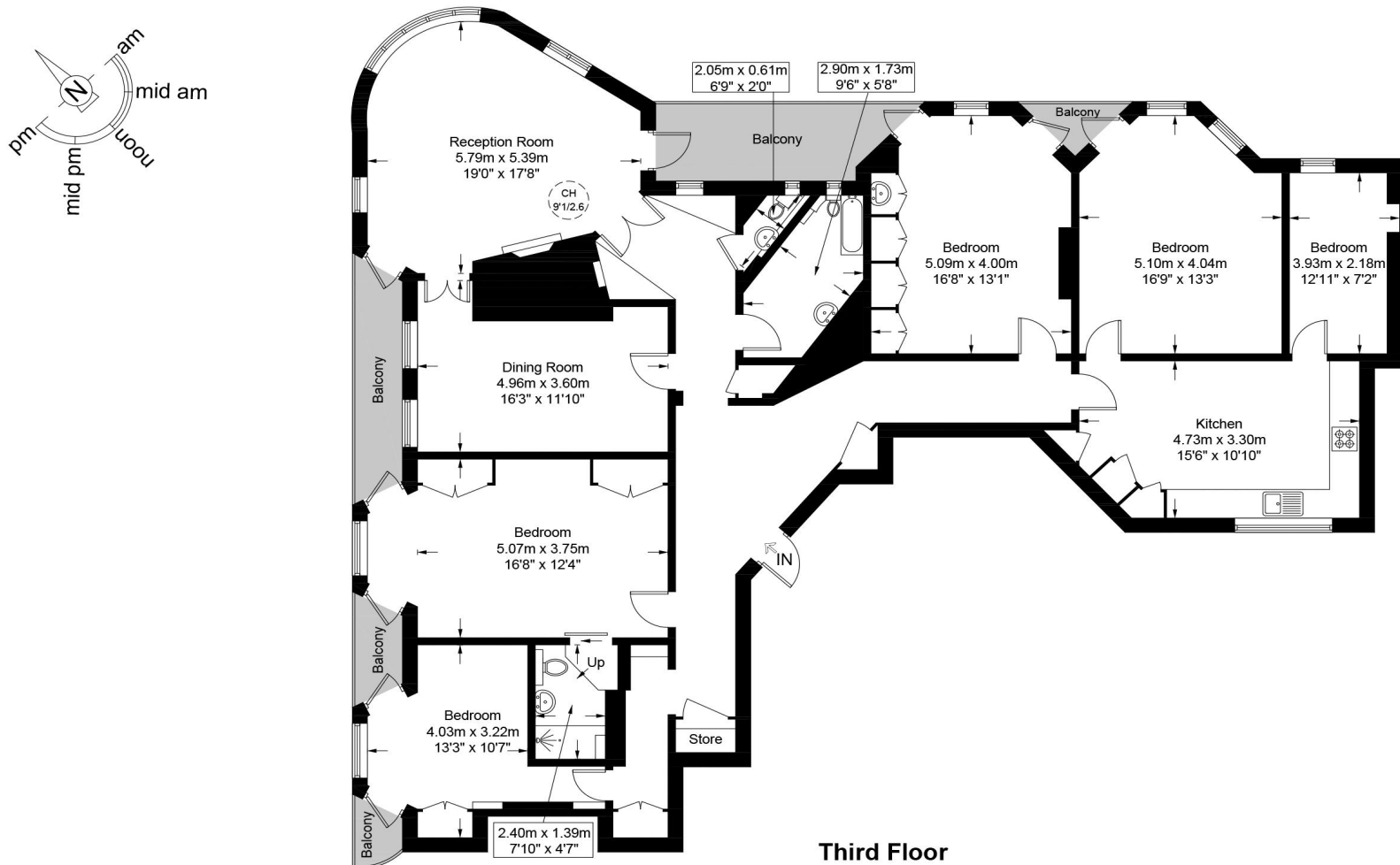
Google
★★★★★
4.9 Stars | 132 Reviews

Find us on social media

-  vitaproperties
-  VitaProperties
-  VitaProperties

Palace Court, NW3

Approximate Gross Internal Area = 2081 sq ft / 193.3 sq m



Third Floor

This plan is for layout guidance only and is not drawn to scale unless stated. All dimensions, including windows, doors, and the Total Gross Internal Area (GIA), are approximate. For precise measurements, please consult a qualified architect or surveyor before making any decisions based on this plan.



Certified
Property
Measurer