



Maygrove Road, West Hampstead, London NW6 .| £4,000

- Beautiful duplex apartment
- Private south facing garden
- Private entrance
- Ground and raised ground floor

- Suitable for professional sharers or family
- Stylish entertaining spaces
- Moments to transport and amenities

"Vita Properties have been tremendously helpful throughout the process of securing/renting my flat. Informative about the property, prompt communication, easy to use dashboard for sharing of information, and pleasant to work with. Highly recommend!"

Kate Brookfield x Vita Properties present a 4 bedroom duplex garden apartment in West Hampstead, NW6 Conveniently located, this impressive home spans over 1460 sq ft, occupying the raised and garden level of a charming mid-terrace Victorian property. Featuring a private ground floor entrance, the wide hallway with an exposed brick wall leads to a formal living room (or bedroom 4) and a breathtaking 34'3 sq ft industrial-style kitchen/living space with dark-framed doors to the southwest-facing garden. The dark blue shaker kitchen includes bare brick splashbacks and three large skylights for optimal natural light. A floating staircase leads to the 1st level with a principal bedroom (with en-suite shower room), two double bedrooms and bathroom. The apartment further benefits from a ground floor utility room with a separate WC and further storage. The design of this home has focussed on creating large and inviting communal/every day spaces whilst not compromising bedroom sizes.

Overall the apartment very much gives the feel of a traditional house with bedrooms located above the living spaces.



Oliver Kent

✉ [oliver.kent@vitaproperties.uk](mailto:oliver.kent@vitaproperties.uk)

☎ +4477 7274 0351



🏠 Flat  
🔑 Available to Let  
🛏 x 4  
🚿 x 1  
🚪 x 3

SCAN FOR  
A VIDEO  
WALKTHROUGH





"I was very impressed with Vita and their network of buyers. When the sale of my flat fell through (twice) they worked extremely hard to find new buyers in a difficult market - thank you!"

---





"Working with Vita properties has been a smooth experience! No complaints at all. Our letting agent, Diana has been fantastic and very helpful throughout the whole process. I would highly recommend both Vita properties and Diana."

---



"I used Vita properties to find a flat recently and it was an overall professional, personalised and positive experience. Saira went the extra mile to accommodate to our needs and quick to help us whenever possible."

---

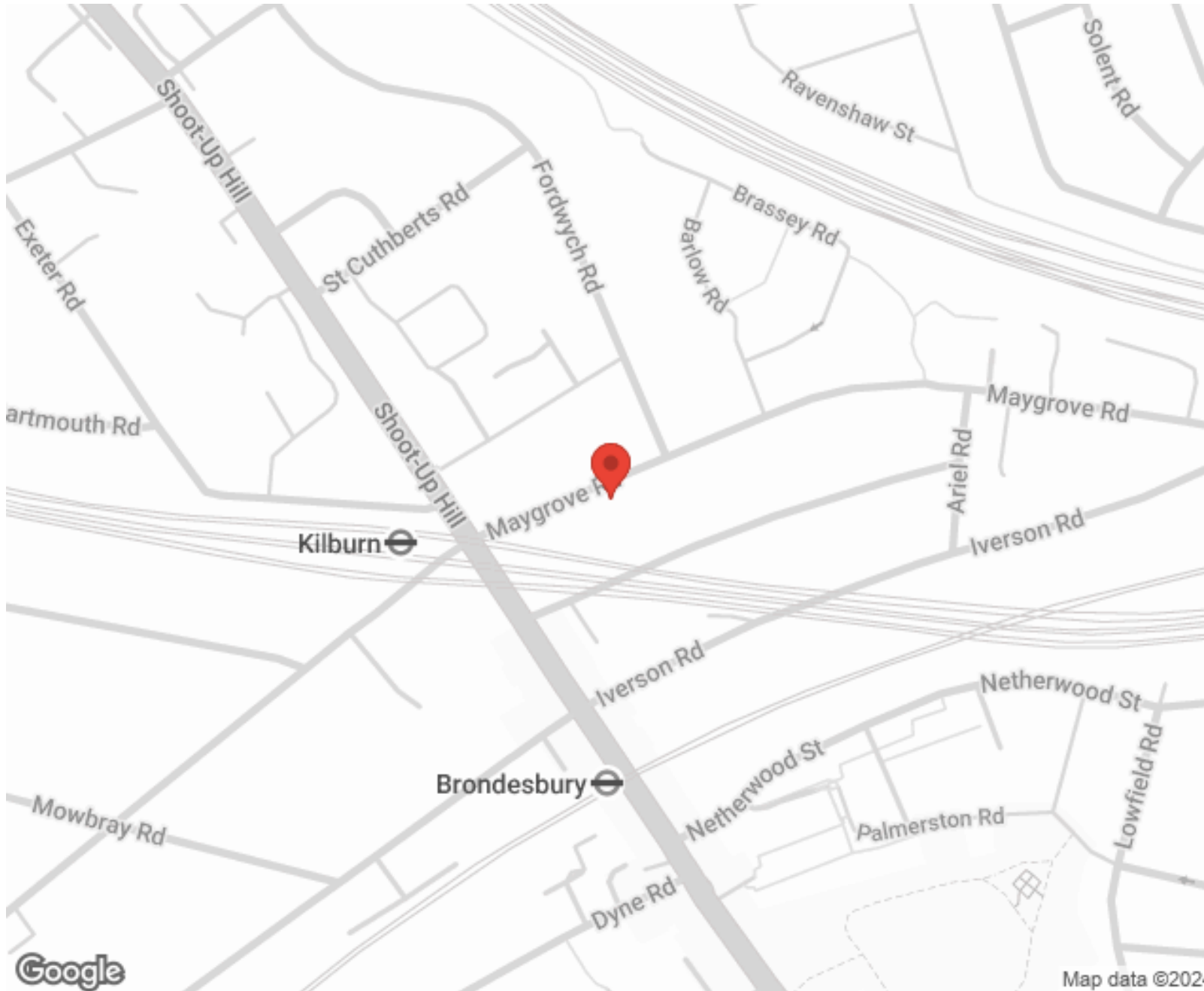


**MORE INFO, PICTURES,  
CONTACT ON  
OUR WEBSITE**





"Vita Properties is a very professional agency. My experience with them was incredible and the entire team was very helpful and kind throughout the renting process. I'd highly recommend!"



Score	Energy rating	Current	Potential
92+	A		
81-91	B		
69-80	C	77 C	80 C
55-68	D		
39-54	E		
21-38	F		
1-20	G		

SCAN FOR MORE  
GOOGLE REVIEWS






Google



4.9 Stars | 132 Reviews

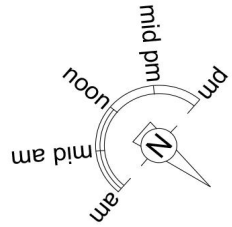
Find us on social media

-  vitaproperties
-  VitaProperties
-  VitaProperties

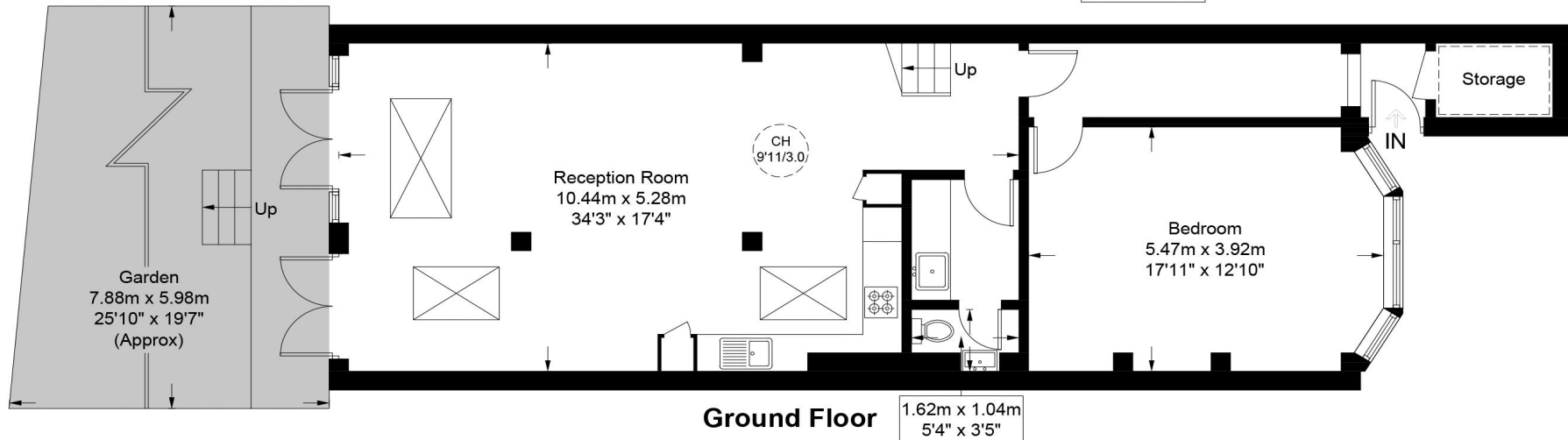
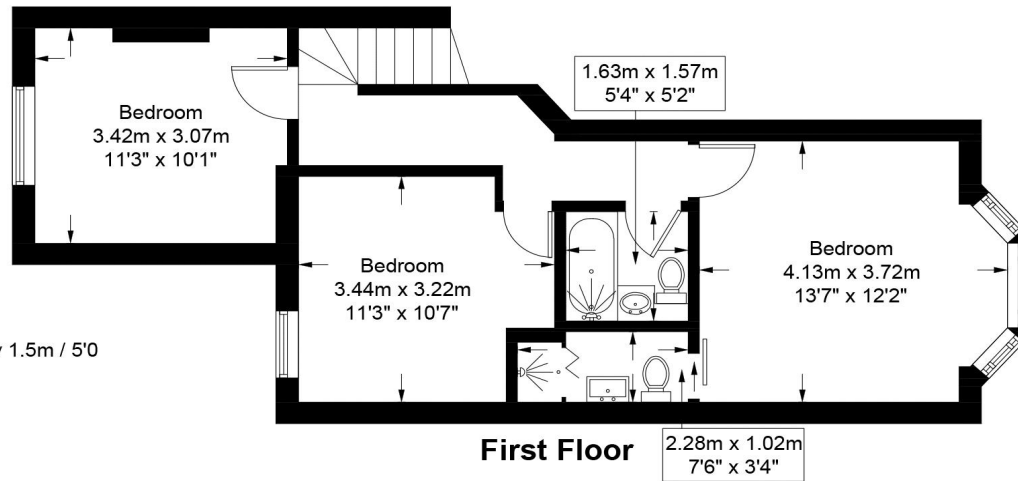
# Maygrove Road, NW6

Approximate Gross Internal Area = 1469 sq ft / 136.5 sq m

Restricted Height = 24 sq ft / 2.2 sq m



 = Reduced headroom below 1.5m / 5'0"



This plan is for layout guidance only and is not drawn to scale unless stated. All dimensions, including windows, doors, and the Total Gross Internal Area (GIA), are approximate. For precise measurements, please consult a qualified architect or surveyor before making any decisions based on this plan.



Certified  
Property  
Measurer