



Chanin Mews, Willesden Green, London NW2 .| £1,200,000

- Freehold Mews house
- Private gated development
- Allocated parking space
- End of terrace

- Large garden

"Vita Properties have been tremendously helpful throughout the process of securing/renting my flat. Informative about the property, prompt communication, easy to use dashboard for sharing of information, and pleasant to work with. Highly recommend!"

Kate Brookfield x Vita Properties present this wonderful modern family home, set within a private gated mews in Willesden Green, NW2.

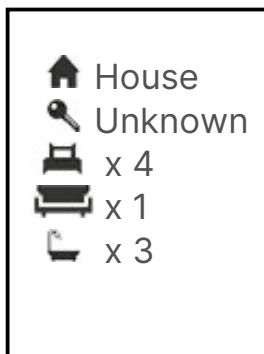
Offering in excess of 1550sq ft of living space, this end of terrace home benefits from allocated parking space, a beautiful garden and additional courtyard. With accommodation arranged over three floors, the house comprises a bright, dual aspect ground floor space, hosting a living area, open plan dining room and contemporary kitchen. French doors lead to the extremely attractive garden which sweeps around the side of the house. The lower floor offers two large bedrooms, bathroom and access to a large courtyard with staircase up to the main garden. The first floor of the house comprises two further large double bedrooms and two bathrooms.



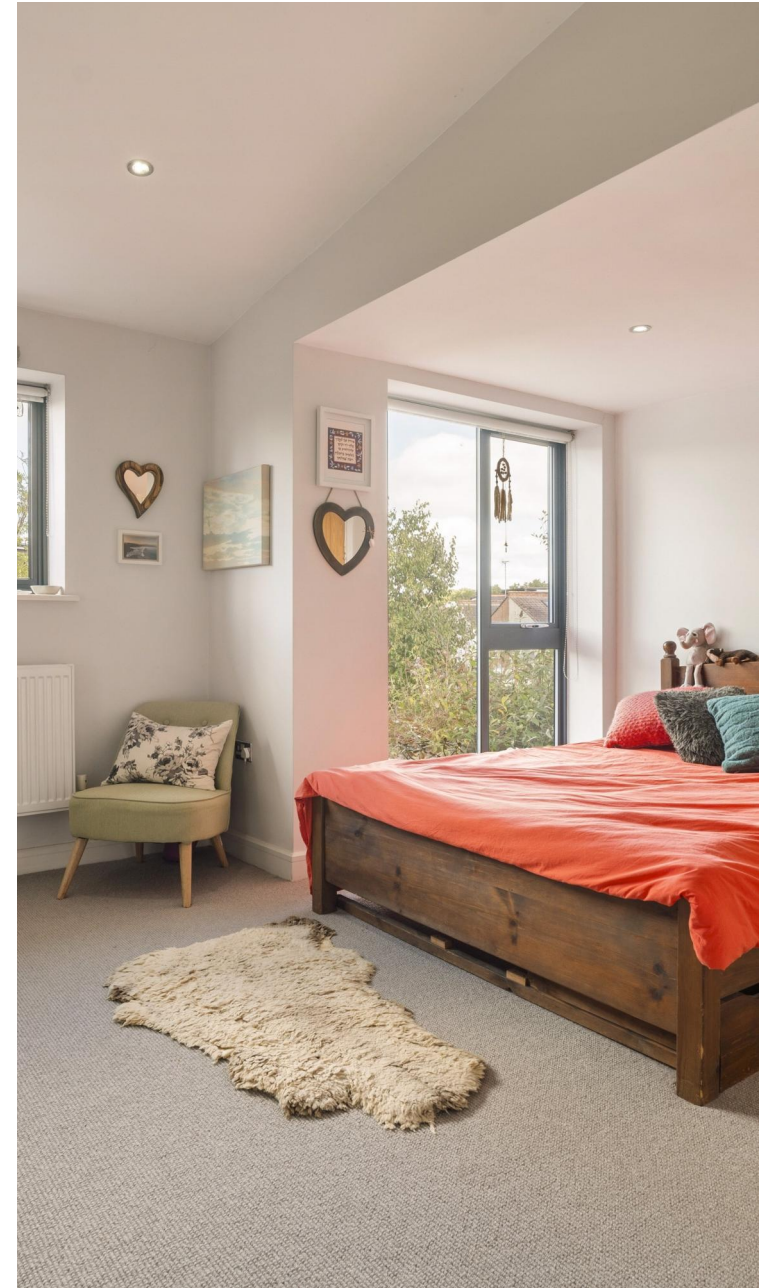
Kate Brookfield

✉ Kate.brookfield@vitaproperties.uk

☎ +4478 1365 5431



"I was very impressed with Vita and their network of buyers. When the sale of my flat fell through (twice) they worked extremely hard to find new buyers in a difficult market - thank you!"



"Working with Vita properties has been a smooth experience! No complaints at all. Our letting agent, Diana has been fantastic and very helpful throughout the whole process. I would highly recommend both Vita properties and Diana."



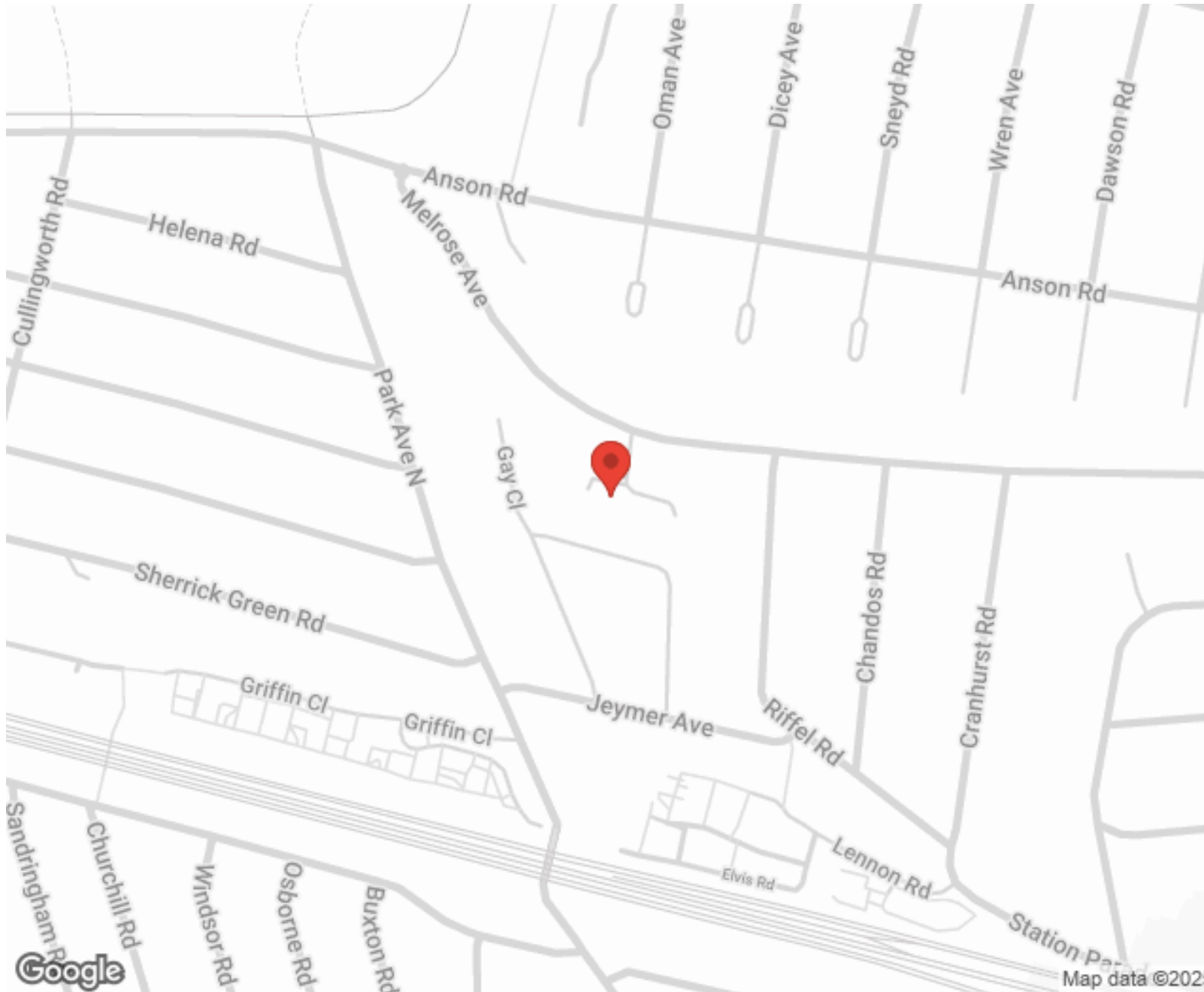
"I used Vita properties to find a flat recently and it was an overall professional, personalised and positive experience. Saira went the extra mile to accommodate to our needs and quick to help us whenever possible."



**MORE INFO, PICTURES,
CONTACT ON
OUR WEBSITE**



"Vita Properties is a very professional agency. My experience with them was incredible and the entire team was very helpful and kind throughout the renting process. I'd highly recommend!"



Score	Energy rating	Current	Potential
92+	A		
81-91	B		88 B
69-80	C	80 C	
55-68	D		
39-54	E		
21-38	F		
1-20	G		

SCAN FOR MORE
GOOGLE REVIEWS



Google



4.9 Stars | 132 Reviews

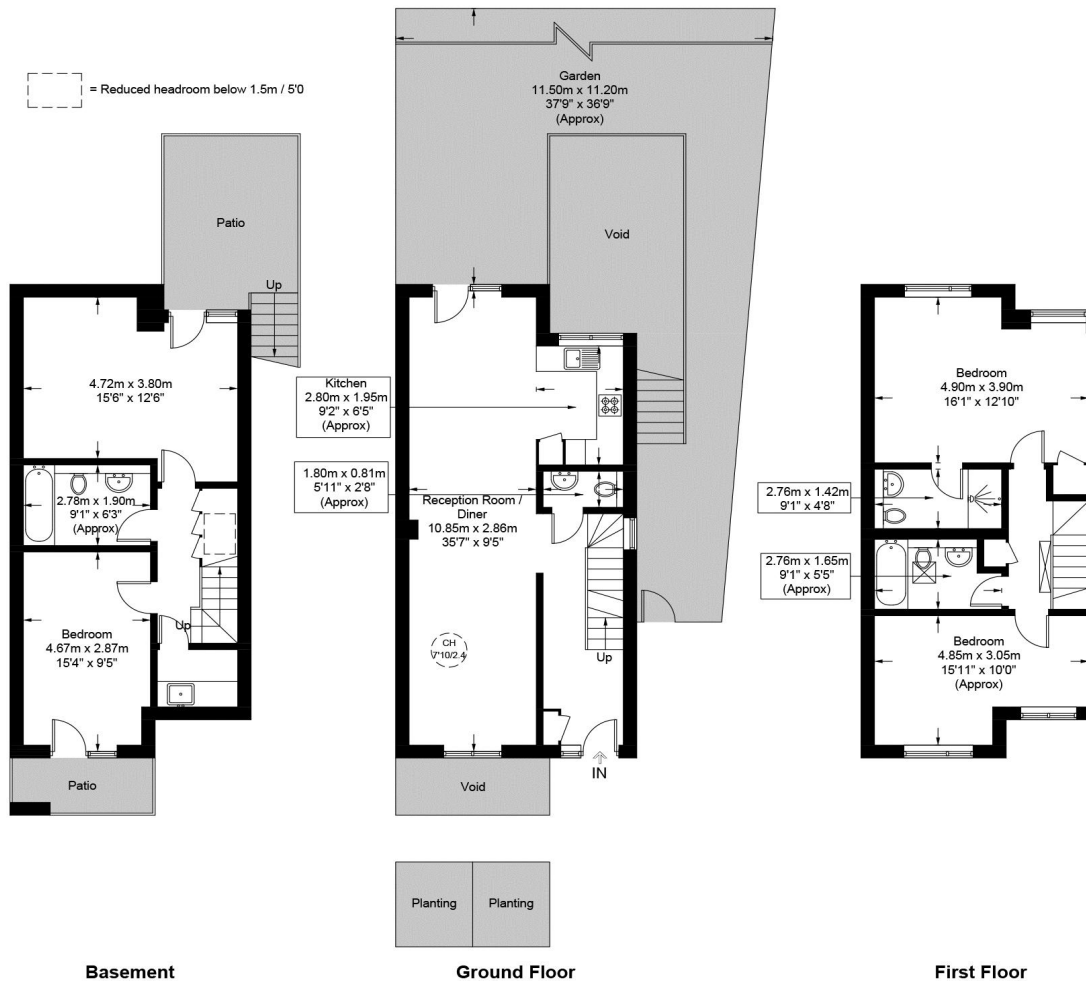
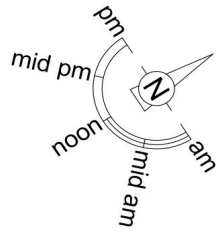
Find us on social media

- vitaproperties
- VitaProperties
- VitaProperties

Chanin Mews, NW2

Approximate Gross Internal Area = 1552 sq ft / 144.2 sq m

Restricted Height = 9 sq ft / 0.8 sq m



This plan is for layout guidance only and is not drawn to scale unless stated. All dimensions, including windows, doors, and the Total Gross Internal Area (GIA), are approximate. For precise measurements, please consult a qualified architect or surveyor before making any decisions based on this plan.



**Certified
Property
Measurer**