



Avenue Mansions, Finchley Road, Hampstead, London NW3 .| £1,300,000

- Lift
- Communal Gardens
- On-site Management
- Share of Freehold

- Lateral Space
- Chain Free

"Vita Properties have been tremendously helpful throughout the process of securing/renting my flat. Informative about the property, prompt communication, easy to use dashboard for sharing of information, and pleasant to work with. Highly recommend!"

Kate Brookfield x Vita Properties are delighted to offer this beautifully presented & full of character 4 bed apartment which maintains many of its charming original features, bright bay windows and one original feature fireplace. The property is spaced over an impressive floor area of approx 1800 sq ft, comprising of 3 double bedrooms & 1 single bedrooms, a large double aspect reception room, 2 bathrooms, a large, bright kitchen/breakfast room, utility room, communal gardens and onsite management company.






This fabulous property situated within the sought-after BAM Estate is conveniently located in the heart of West Hampstead and benefits a short walk to large selection of boutique shops, restaurants and excellent public transport links including West Hampstead tube station (Jubilee Line) & West Hampstead (Thames Link & Overground)



Kate Brookfield

✉ Kate.brookfield@vitaproperties.uk
☎ +4478 1365 5431

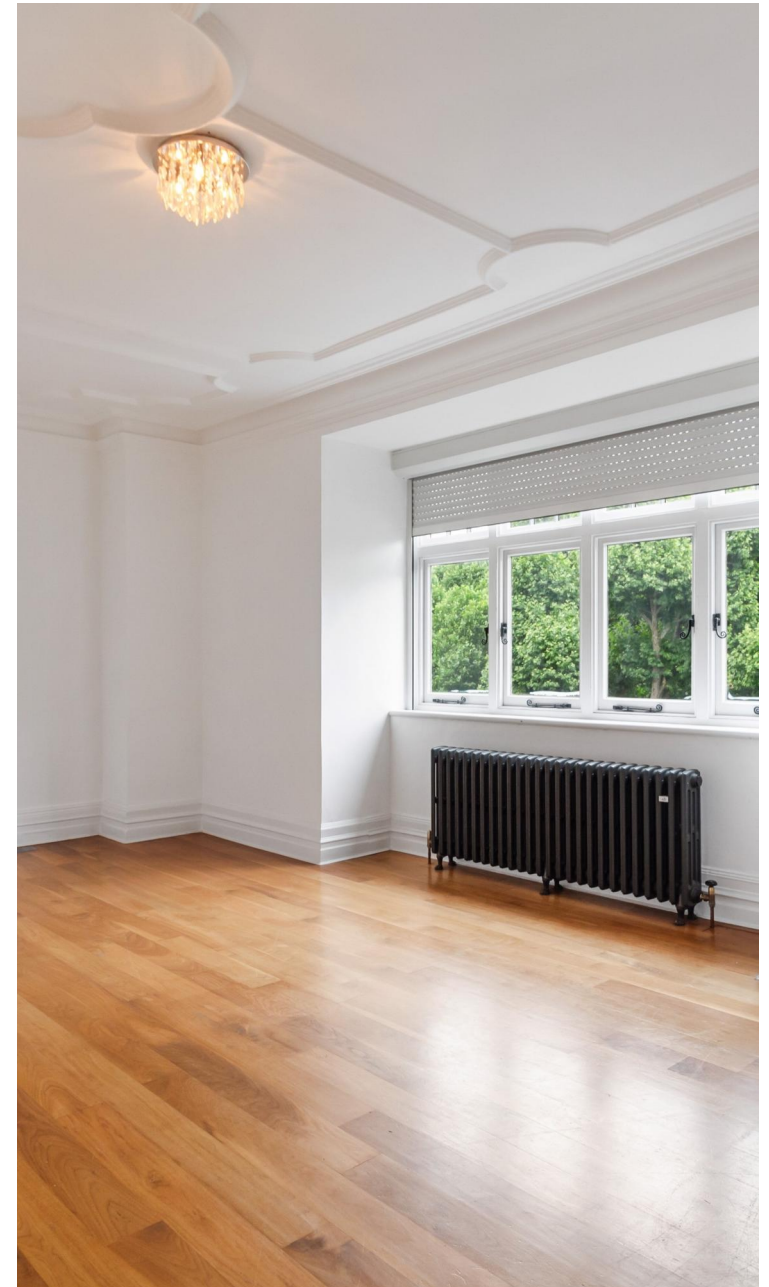


-  Flat
-  Share of Freehold
-  x 4
-  x 2
-  x 2

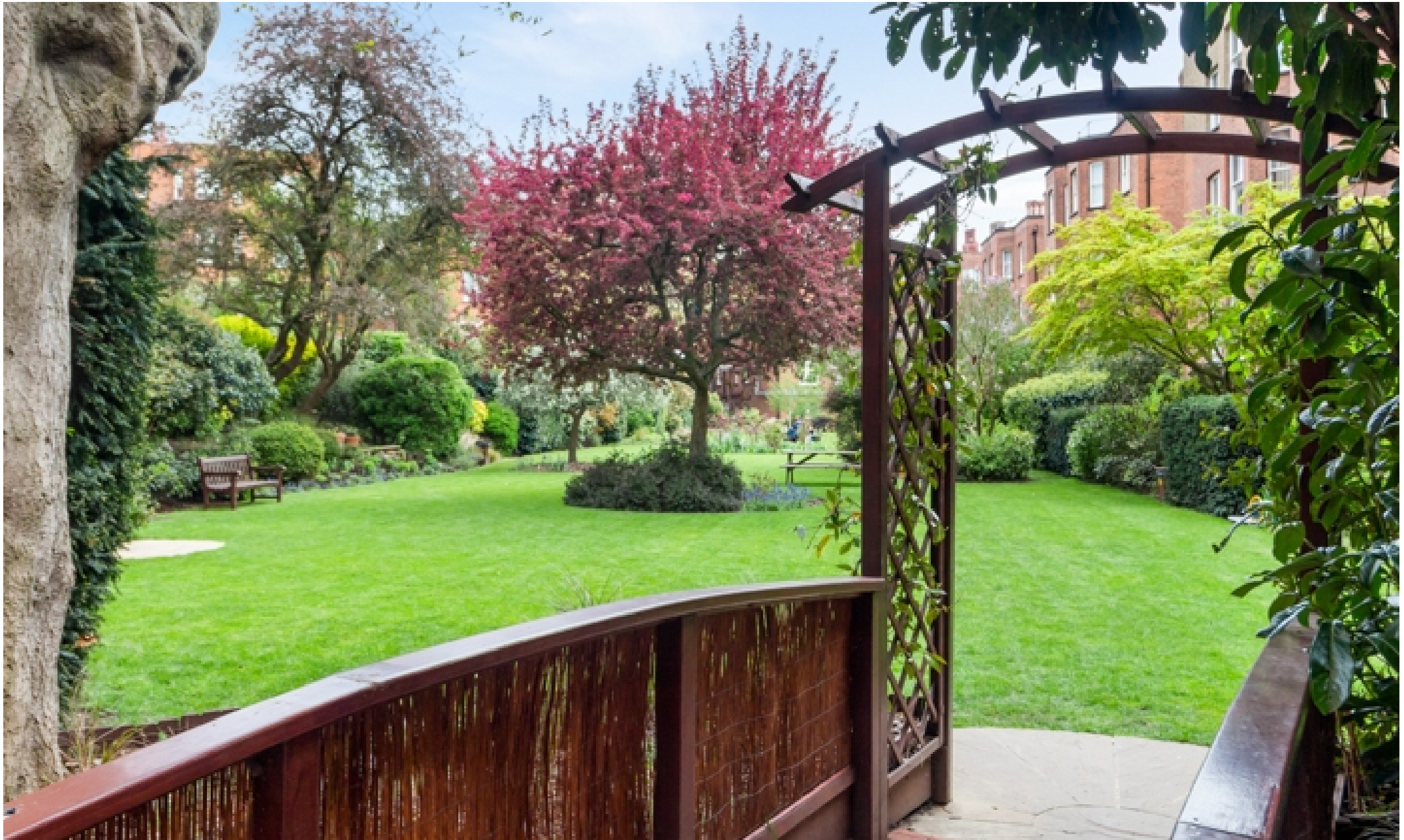
SCAN FOR
A VIDEO
WALKTHROUGH



"I was very impressed with Vita and their network of buyers. When the sale of my flat fell through (twice) they worked extremely hard to find new buyers in a difficult market - thank you!"



"Working with Vita properties has been a smooth experience! No complaints at all. Our letting agent, Diana has been fantastic and very helpful throughout the whole process. I would highly recommend both Vita properties and Diana."



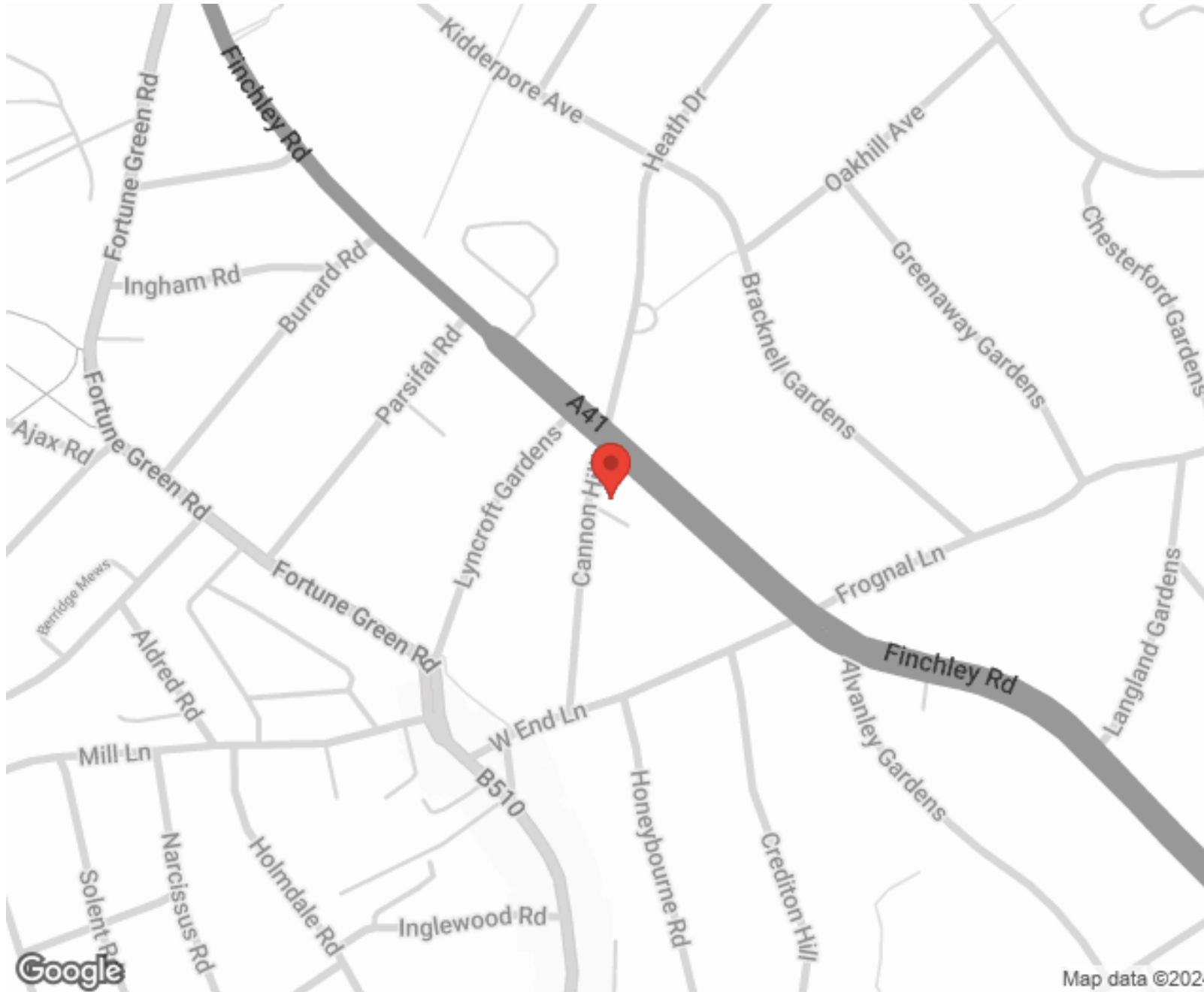
"I used Vita properties to find a flat recently and it was an overall professional, personalised and positive experience. Saira went the extra mile to accommodate to our needs and quick to help us whenever possible."



**MORE INFO, PICTURES,
CONTACT ON
OUR WEBSITE**



"Vita Properties is a very professional agency. My experience with them was incredible and the entire team was very helpful and kind throughout the renting process. I'd highly recommend!"



Score	Energy rating	Current	Potential
92+	A		
81-91	B		
69-80	C		
55-68	D		64 D
39-54	E	41 E	
21-38	F		
1-20	G		

SCAN FOR MORE
GOOGLE REVIEWS



Google



4.9 Stars | 132 Reviews

Find us on social media

-  vitaproperties
-  VitaProperties
-  VitaProperties

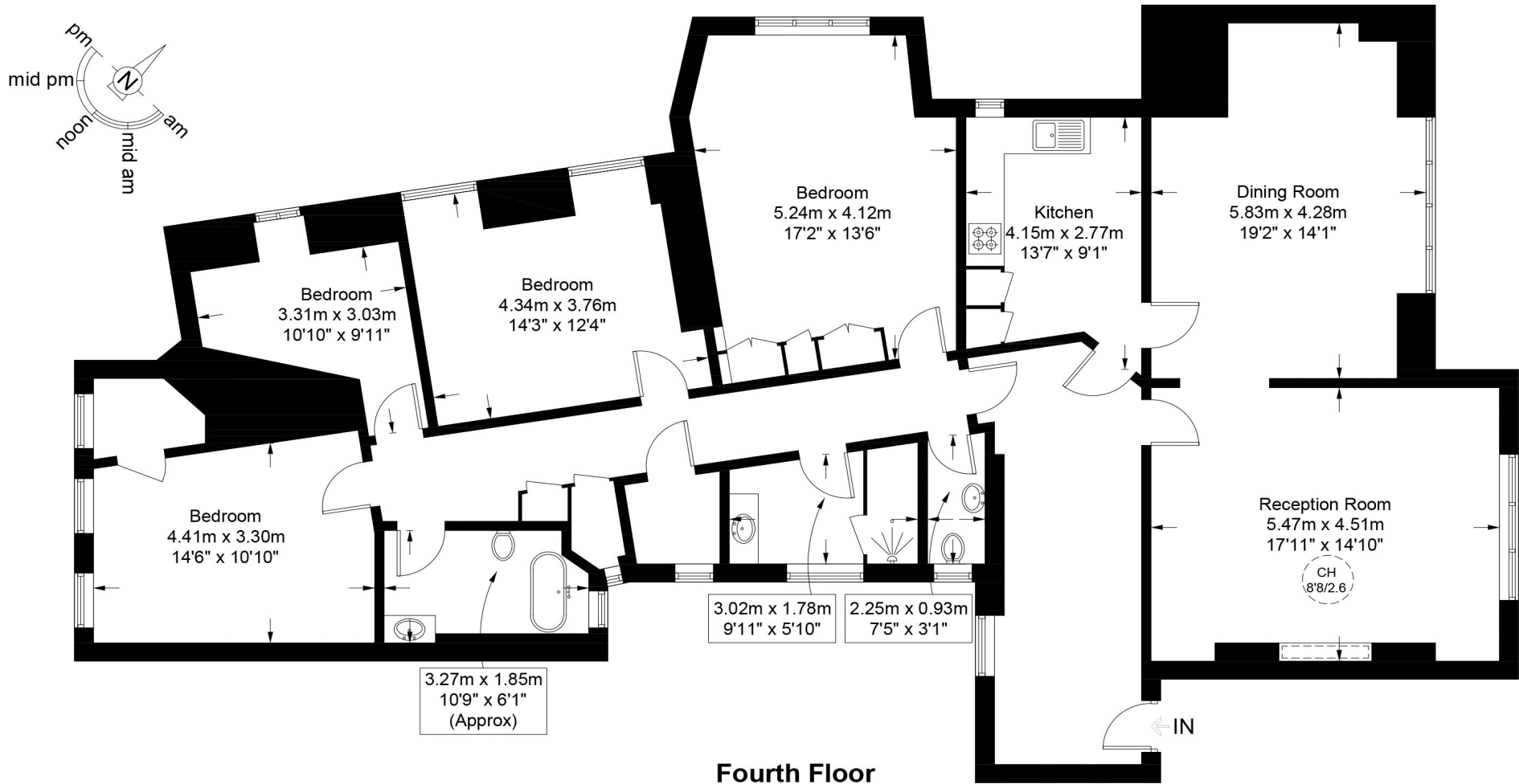


Map data ©2024

Avenue Mansions, NW3

Approximate Gross Internal Area = 1802 sq ft / 167.4 sq m

Restricted Height = 4 sq ft / 0.4 sq m



This plan is for layout guidance only and is not drawn to scale unless stated. All dimensions, including windows, doors, and the Total Gross Internal Area (GIA), are approximate. For precise measurements, please consult a qualified architect or surveyor before making any decisions based on this plan.



Certified
Property
Measurer