



Maygrove Road, Kilburn, London NW6 .| £850,000

- 1238sq ft garden duplex apartment
- 3 bedrooms, 2 bathrooms
- Wonderful south facing garden with covering patio area
- Private entrance

- Close to amenities and transport

"Vita Properties have been tremendously helpful throughout the process of securing/renting my flat. Informative about the property, prompt communication, easy to use dashboard for sharing of information, and pleasant to work with. Highly recommend!"

Kate Brookfield x Vita Properties present this wonderful 3 bedroom garden duplex apartment on Maygrove Road, NW6.

Offering 1238 sq ft of accommodation and benefiting from sole use of an 18'8 south facing garden, this home was lovingly renovated by the current owners in 2015 and features a private entrance, kitchen/diner with French doors to the living space, 3 sizeable double bedrooms and 2 bathrooms (1 incorporating a utility cupboard).








Kate Brookfield

✉ Kate.brookfield@vitaproperties.uk

☎ +4478 1365 5431



	Flat
	Leasehold
	x 3
	x 1
	x 2



"I was very impressed with Vita and their network of buyers. When the sale of my flat fell through (twice) they worked extremely hard to find new buyers in a difficult market - thank you!"

---



"Working with Vita properties has been a smooth experience! No complaints at all. Our letting agent, Diana has been fantastic and very helpful throughout the whole process. I would highly recommend both Vita properties and Diana."

---



"I used Vita properties to find a flat recently and it was an overall professional, personalised and positive experience. Saira went the extra mile to accommodate to our needs and quick to help us whenever possible."

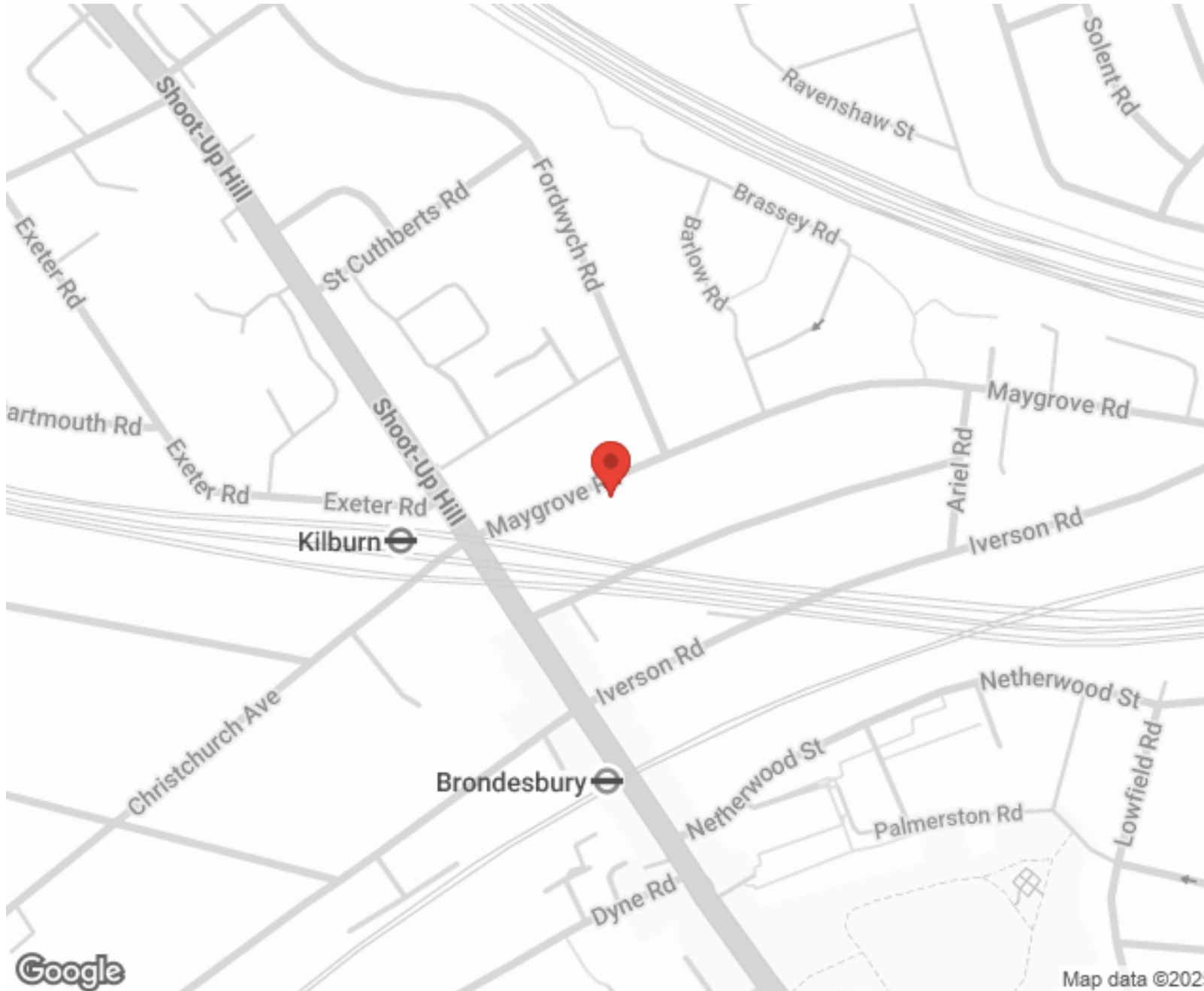
---



**MORE INFO, PICTURES,  
CONTACT ON  
OUR WEBSITE**



"Vita Properties is a very professional agency. My experience with them was incredible and the entire team was very helpful and kind throughout the renting process. I'd highly recommend!"



Score	Energy rating	Current	Potential
92+	A		
81-91	B		
69-80	C		69 C
55-68	D	61 D	
39-54	E		
21-38	F		
1-20	G		

SCAN FOR MORE  
GOOGLE REVIEWS






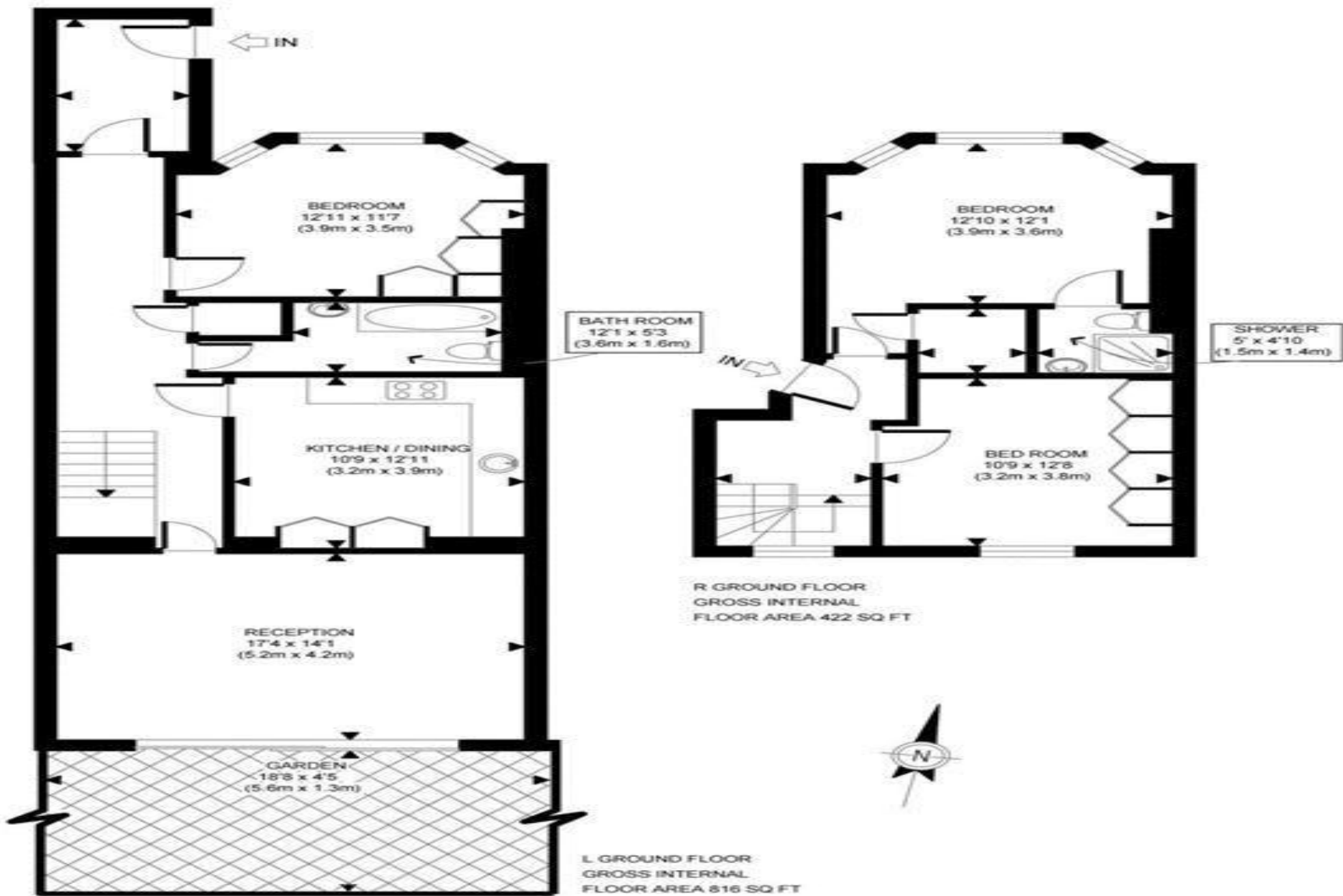
Google



4.9 Stars | 132 Reviews

Find us on social media

-  vitaproperties
-  VitaProperties
-  VitaProperties



APPROX. GROSS INTERNAL FLOOR AREA 1238 SQ FT / 115 SQM

Copyright [photoplan.co.uk](http://photoplan.co.uk)

Floor plans are for identification and guideline purposes only, not to scale, compliant with RICS code of measuring practice.