



## Goldhurst Terrace, South Hampstead, London NW6 .| £3,500,000

- Just Under 3600 Sqft
- Six Bedrooms and Three Bathrooms
- South Facing Garden
- Off Street Parking For Two Vehicles

- Heart of South Hampstead with Excellent Transport Links
- No Onward Chain

"Vita Properties have been tremendously helpful throughout the process of securing/renting my flat. Informative about the property, prompt communication, easy to use dashboard for sharing of information, and pleasant to work with. Highly recommend!"

---



Nouri Alexander

✉ nouri.alexander@vitaproperties.uk

☎ +4475 8405 1289



- |   |          |
|---|----------|
|  | House    |
|  | Freehold |
|  | x 6      |
|  | x 2      |
|  | x 3      |



"I was very impressed with Vita and their network of buyers. When the sale of my flat fell through (twice) they worked extremely hard to find new buyers in a difficult market - thank you!"

---



"Working with Vita properties has been a smooth experience! No complaints at all. Our letting agent, Diana has been fantastic and very helpful throughout the whole process. I would highly recommend both Vita properties and Diana."

---



"I used Vita properties to find a flat recently and it was an overall professional, personalised and positive experience. Saira went the extra mile to accommodate to our needs and quick to help us whenever possible."

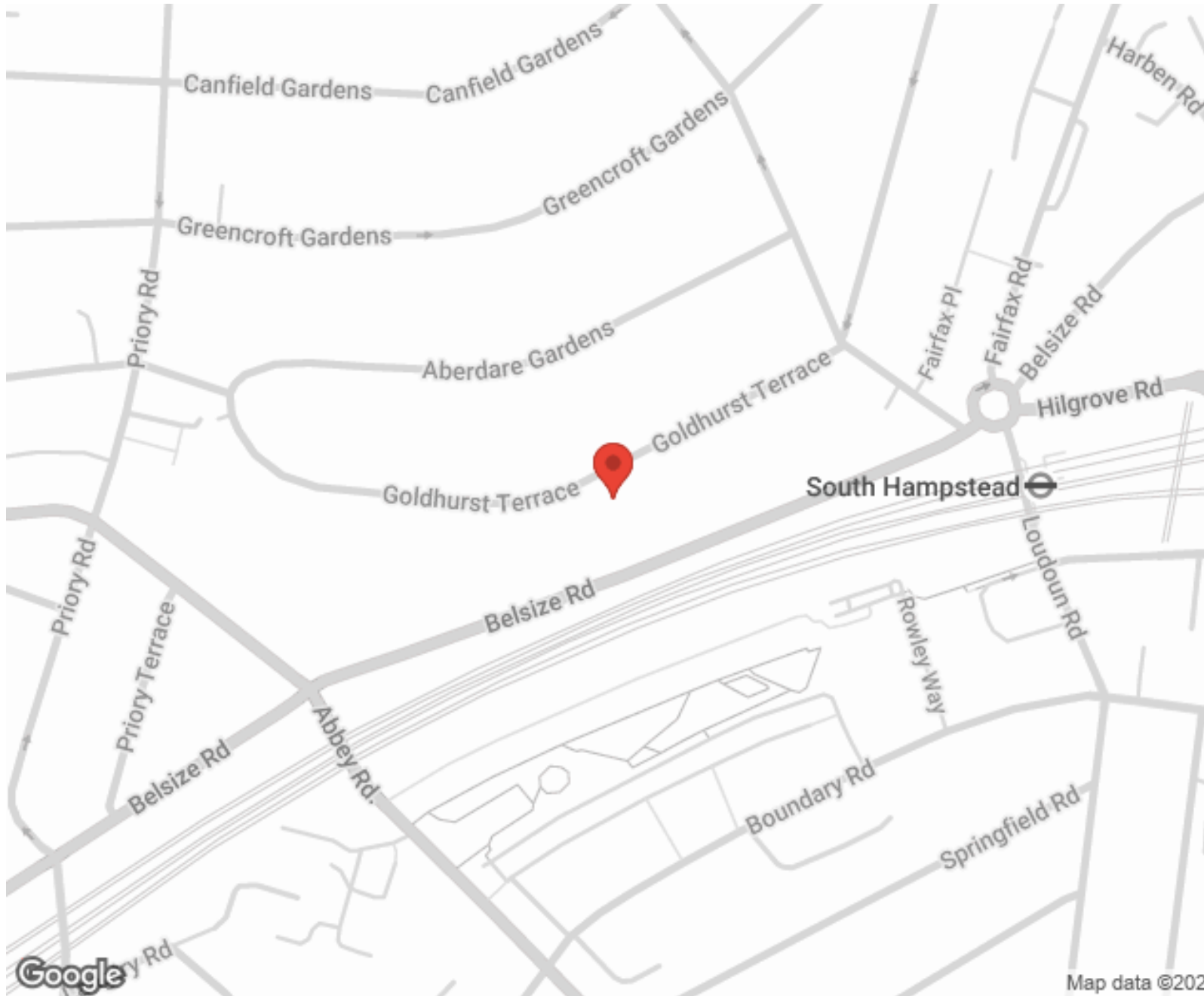
---



**MORE INFO, PICTURES,  
CONTACT ON  
OUR WEBSITE**




"Vita Properties is a very professional agency. My experience with them was incredible and the entire team was very helpful and kind throughout the renting process. I'd highly recommend!"






Energy Efficiency Rating			
Score	Energy rating	Current	Potential
92+	A		
81-91	B		85   B
69-80	C		
55-68	D	62   D	
39-54	E		
21-38	F		
1-20	G		

SCAN FOR MORE  
GOOGLE REVIEWS



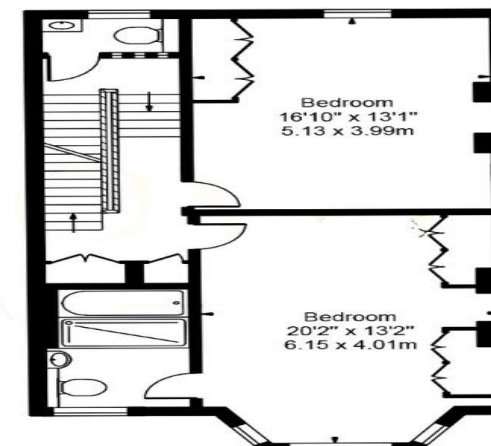
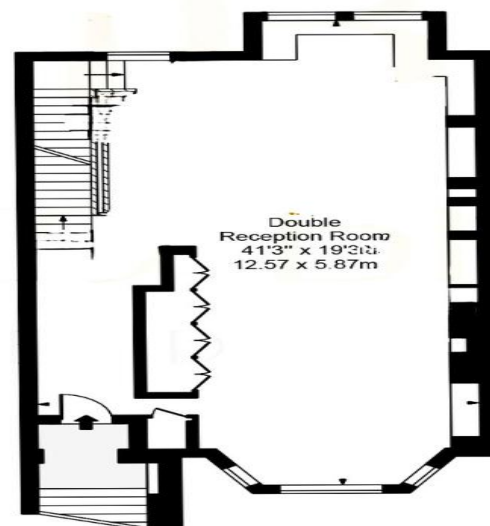
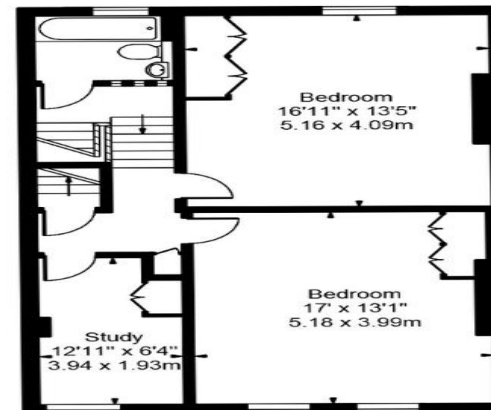
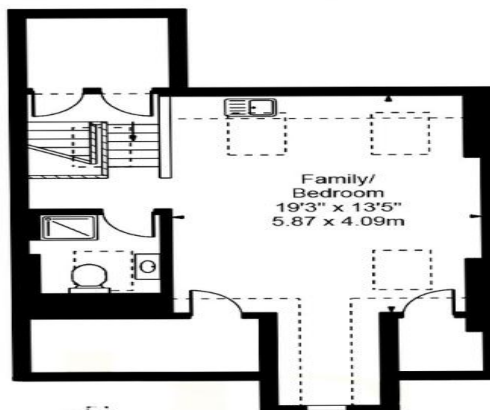
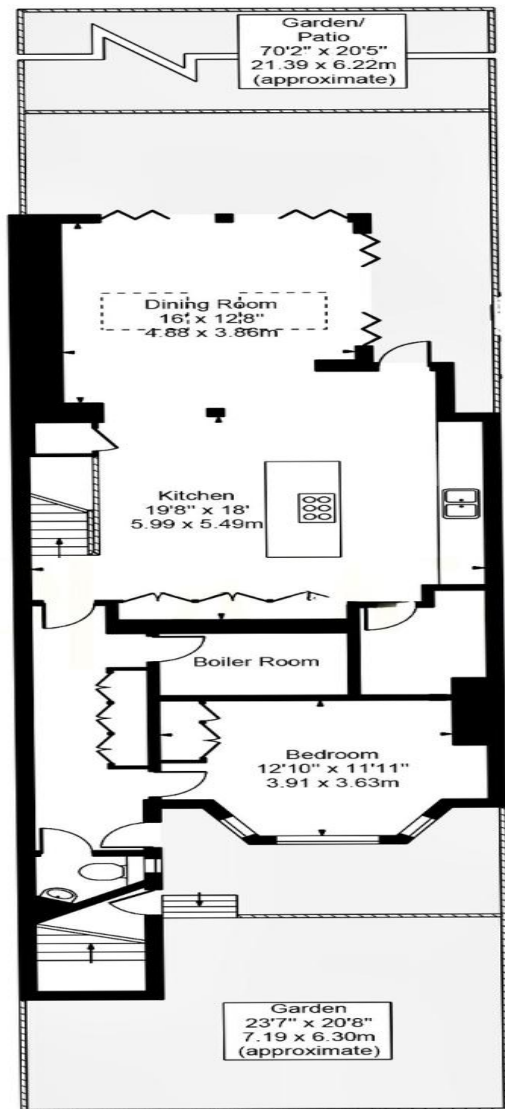
Google  
★★★★★  
4.9 Stars | 132 Reviews

Find us on social media

-  vitaproperties
-  VitaProperties
-  VitaProperties

# Goldhurst Terrace

Approx. Total Internal Area 3596 Sq Ft - 334.08 Sq M  
 (Including Restricted Height Area)  
 Approx. Gross Internal Area 3408 Sq Ft - 316.61 Sq M  
 (Excluding Restricted Height Area)



**For Illustration Purposes Only - Not To Scale**

floor plan should be used as a general outline for guidance only and does not constitute in whole or in part an offer or contract. purchaser or lessee should satisfy themselves by inspection, searches, enquiries and full survey as to the correctness of each statement. s, measurements or distances quoted are approximate and should not be used to value a property or be the basis of any sale or let.