



Portland Place, Marylebone, London W1B .| £1,400

- 24 hour concierge
- Private outside space
- Available asap
- On-site leisure facilities, swimming pool, gym

- Air conditioning
- Sauna, Gym, Cinema Room

"Vita Properties have been tremendously helpful throughout the process of securing/renting my flat. Informative about the property, prompt communication, easy to use dashboard for sharing of information, and pleasant to work with. Highly recommend!"

Experience the epitome of luxury living with a rare opportunity to rent a one-bedroom apartment in the prestigious Regents Crescent development, situated on the enchanting edge of Regent's Park in Marylebone. This exclusive property not only offers exquisite interiors but also provides access to an array of incredible on-site facilities, including a 20-meter pool, sauna, gym, cinema room, and a dedicated 24-hour concierge service.

Regent's Crescent stands as a testament to exceptional craftsmanship and modern elegance. Nestled in a highly sought-after location on the cusp of London's Regent Park and Marylebone, this new build development grants you easy access to the vibrant Marylebone High Street and the dazzling West End. Moreover, the proximity to Regents Park and Great Portland Street underground station, serving the Metropolitan, Circle, and Hammersmith & City lines, ensures effortless connectivity.

Step into this delightful property and immerse yourself in sophistication.

Boasting one bedroom and one bathroom, the apartment provides a spacious living space that emanates comfort and style. The large windows flood the rooms with natural light, accentuating the high ceilings and creating an airy ambiance. With ample storage solutions, you can easily maintain an organized and clutter-free home.

Indulge in the luxury of your own private patio/garden, a rare find in the heart of London. Stay fit and active with access to the state-of-the-art gym and rejuvenate in the inviting pool and sauna. The convenience of a 24-hour concierge service ensures that your every need is met, providing assistance and peace of mind throughout your stay.

	Flat
	Available to Let
	x 1
	x 1
	x 1



Oliver Kent

 oliver.kent@vitaproperties.uk
 +4477 7274 0351



"I was very impressed with Vita and their network of buyers. When the sale of my flat fell through (twice) they worked extremely hard to find new buyers in a difficult market - thank you!"



"Working with Vita properties has been a smooth experience! No complaints at all. Our letting agent, Diana has been fantastic and very helpful throughout the whole process. I would highly recommend both Vita properties and Diana."



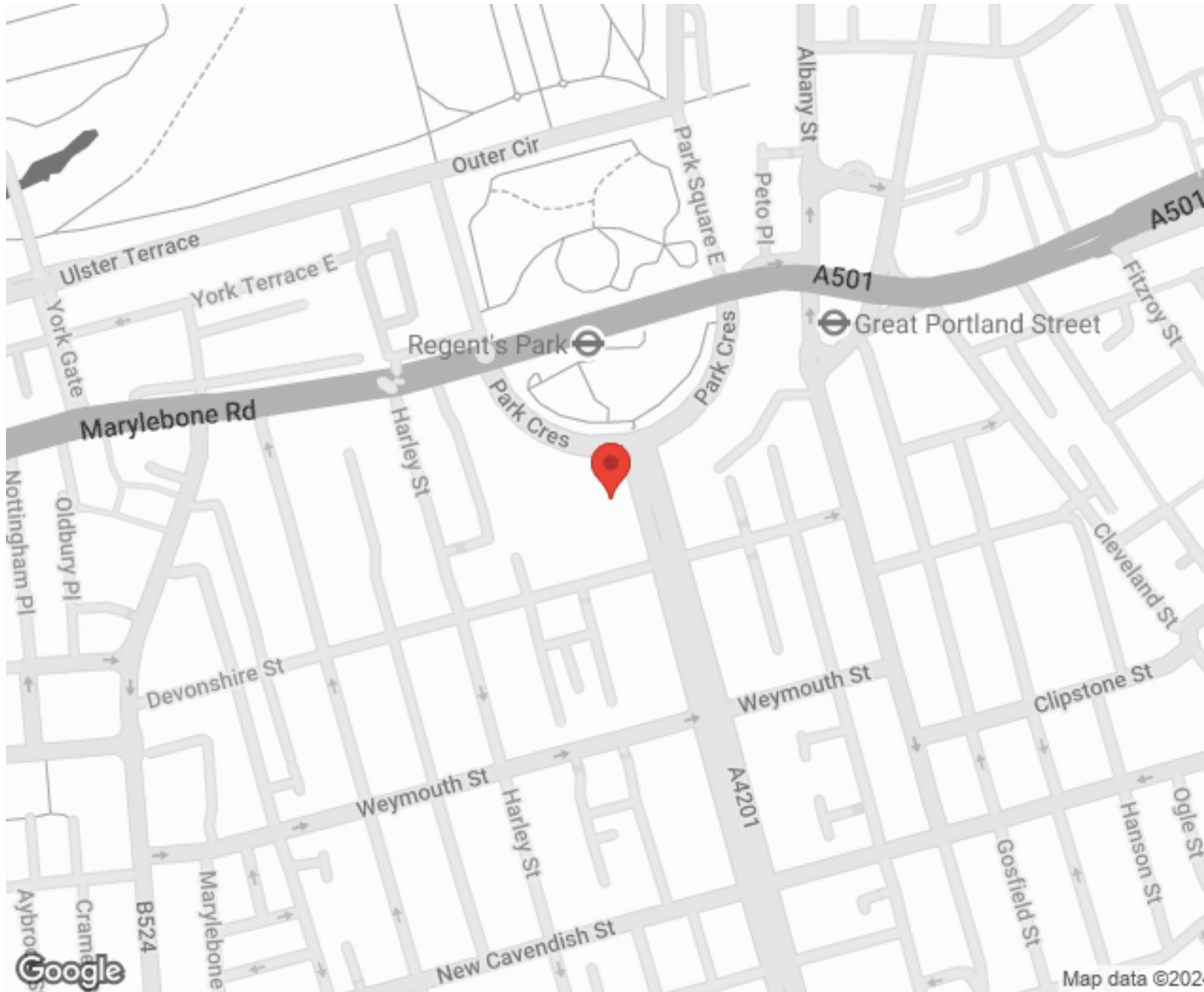
"I used Vita properties to find a flat recently and it was an overall professional, personalised and positive experience. Saira went the extra mile to accommodate to our needs and quick to help us whenever possible."



**MORE INFO, PICTURES,
CONTACT ON
OUR WEBSITE**



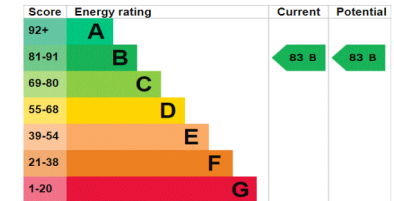
"Vita Properties is a very professional agency. My experience with them was incredible and the entire team was very helpful and kind throughout the renting process. I'd highly recommend!"



Energy rating and score

This property's current energy rating is B. It has the potential to be B.

[See how to improve this property's energy efficiency.](#)



The graph shows this property's current and potential energy rating.

SCAN FOR MORE
GOOGLE REVIEWS



Google



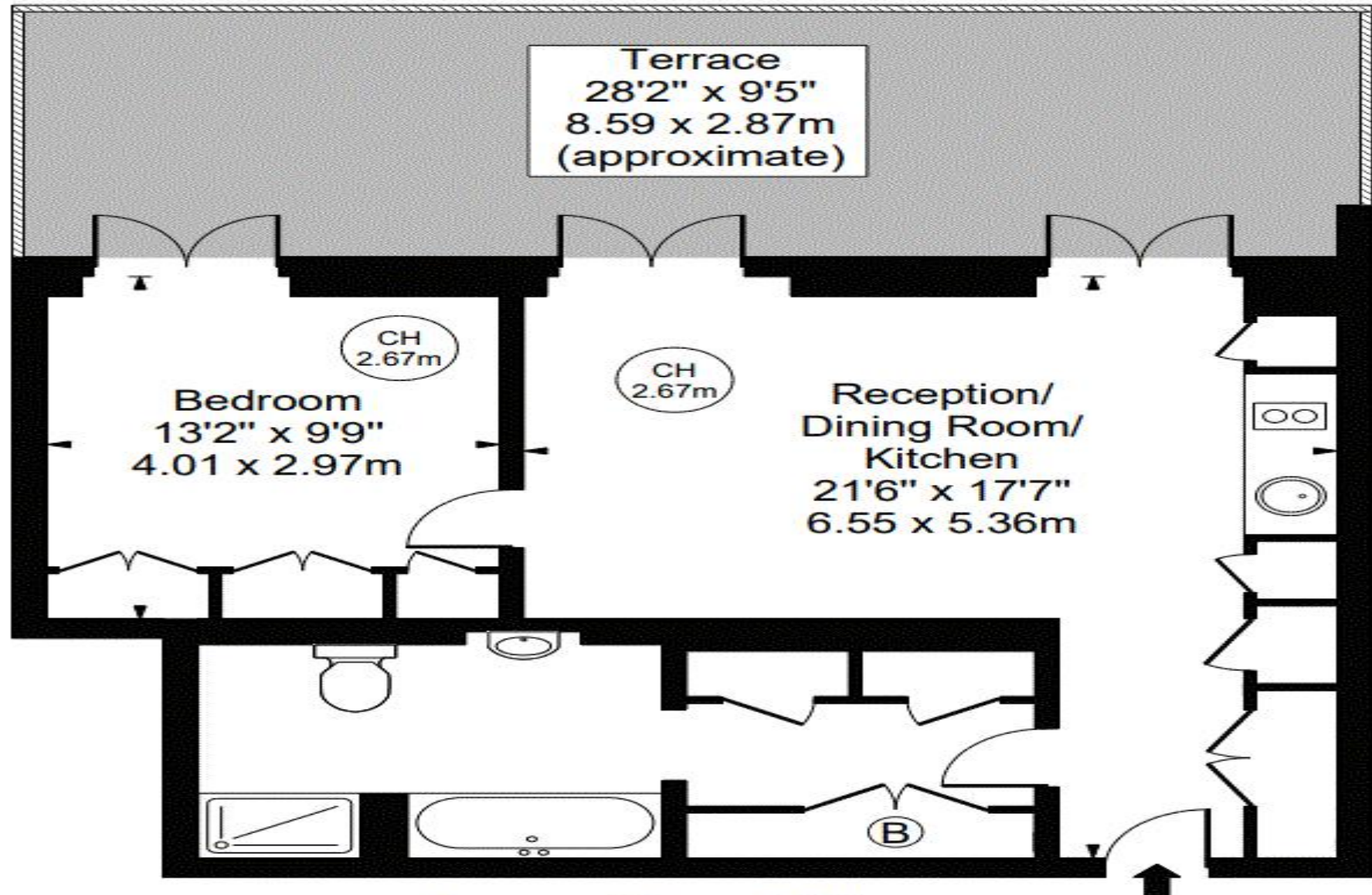
4.9 Stars | 132 Reviews

Find us on social media

- vitaproperties
- VitaProperties
- VitaProperties

Portland Place

Approx. Gross Internal Area 576 Sq Ft - 53.51 Sq M



Lower Ground Floor

For Illustration Purposes Only - Not To Scale