



Mapesbury Road, Mapesbury, London NW2 .| £600,000

- 864 Sqft
- Communal Garden
- Large Reception
- Moments to Shops

- Moments to Transport
- Chain Free

"Vita Properties have been tremendously helpful throughout the process of securing/renting my flat. Informative about the property, prompt communication, easy to use dashboard for sharing of information, and pleasant to work with. Highly recommend!"

A superb two bedroom first floor apartment set within an imposing period residence, with a communal garden. This well presented apartment offers high ceilings throughout and well-proportioned accommodation, including a fantastic reception room with a gorgeous bay window, separate kitchen, principle bedroom with an en-suite shower room, second bedroom with family bathroom and ample storage throughout. Mapesbury Road is ideally located for the Jubilee line at Kilburn station or the London Overground at Brondesbury Park. The property is also in the area of Malorees School catchment which is one of the best around for infants and juniors.



Oliver Kent

✉ oliver.kent@vitaproperties.uk
☎ +4477 7274 0351



🏠 Flat
🔑 Leasehold
🛏 x 2
🛁 x 1
🚿 x 1

SCAN FOR
A VIDEO
WALKTHROUGH



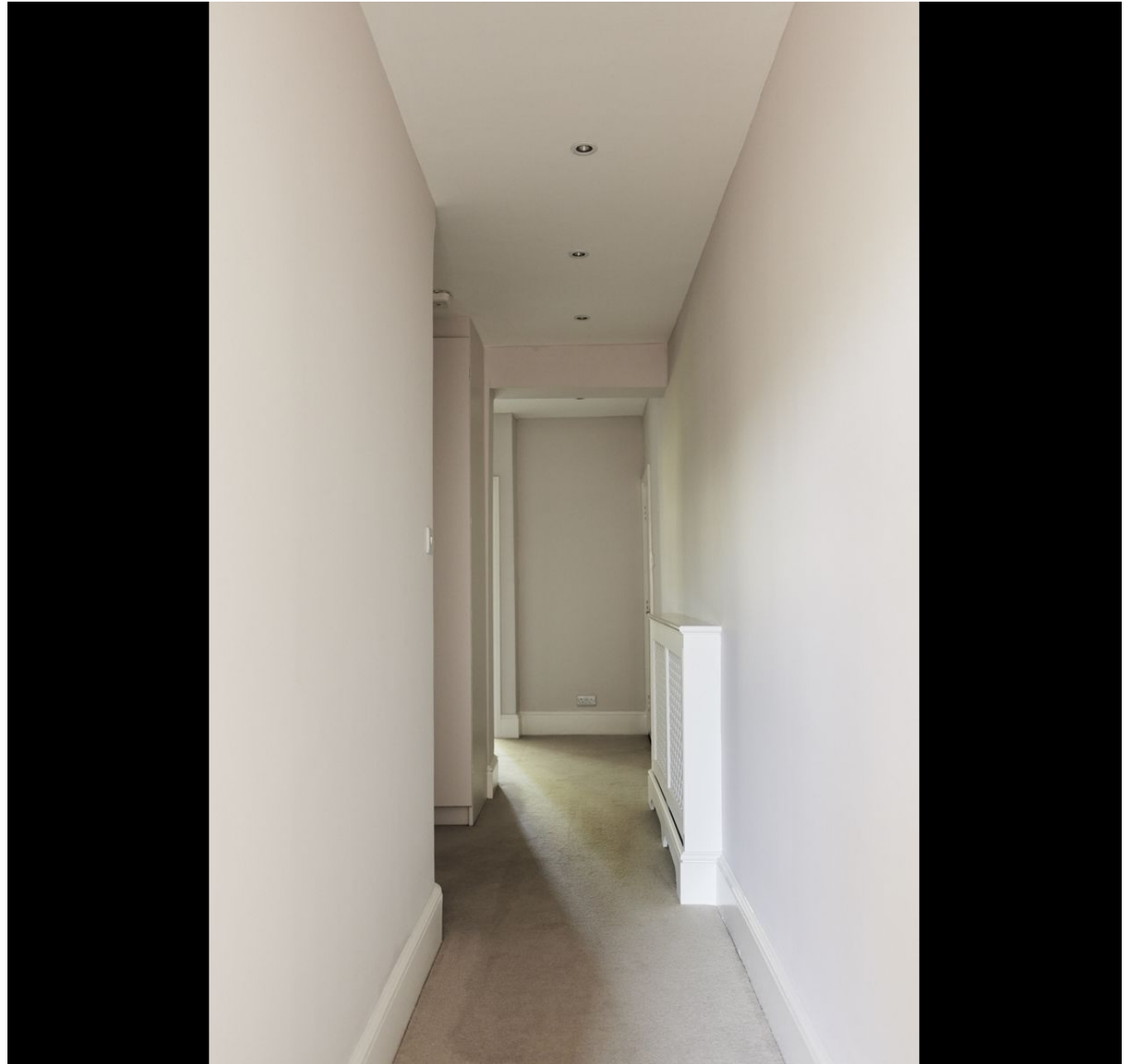
"I was very impressed with Vita and their network of buyers. When the sale of my flat fell through (twice) they worked extremely hard to find new buyers in a difficult market - thank you!"



"Working with Vita properties has been a smooth experience! No complaints at all. Our letting agent, Diana has been fantastic and very helpful throughout the whole process. I would highly recommend both Vita properties and Diana."



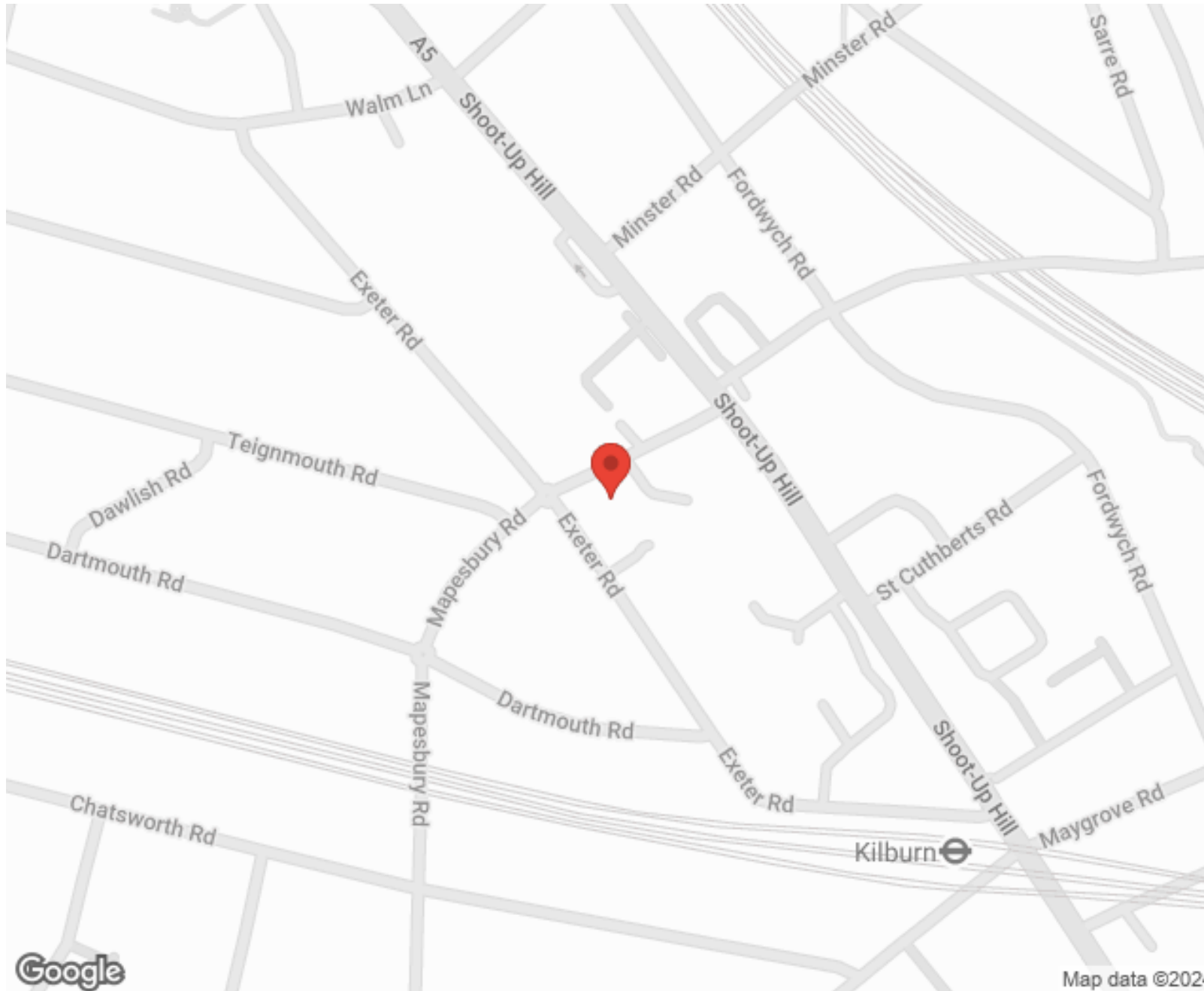
"I used Vita properties to find a flat recently and it was an overall professional, personalised and positive experience. Saira went the extra mile to accommodate to our needs and quick to help us whenever possible."



**MORE INFO, PICTURES,
CONTACT ON
OUR WEBSITE**



"Vita Properties is a very professional agency. My experience with them was incredible and the entire team was very helpful and kind throughout the renting process. I'd highly recommend!"



Score	Energy rating	Current	Potential
92+	A		
81-91	B		
69-80	C		77 C
55-68	D	58 D	
39-54	E		
21-38	F		
1-20	G		

SCAN FOR MORE
GOOGLE REVIEWS



Google



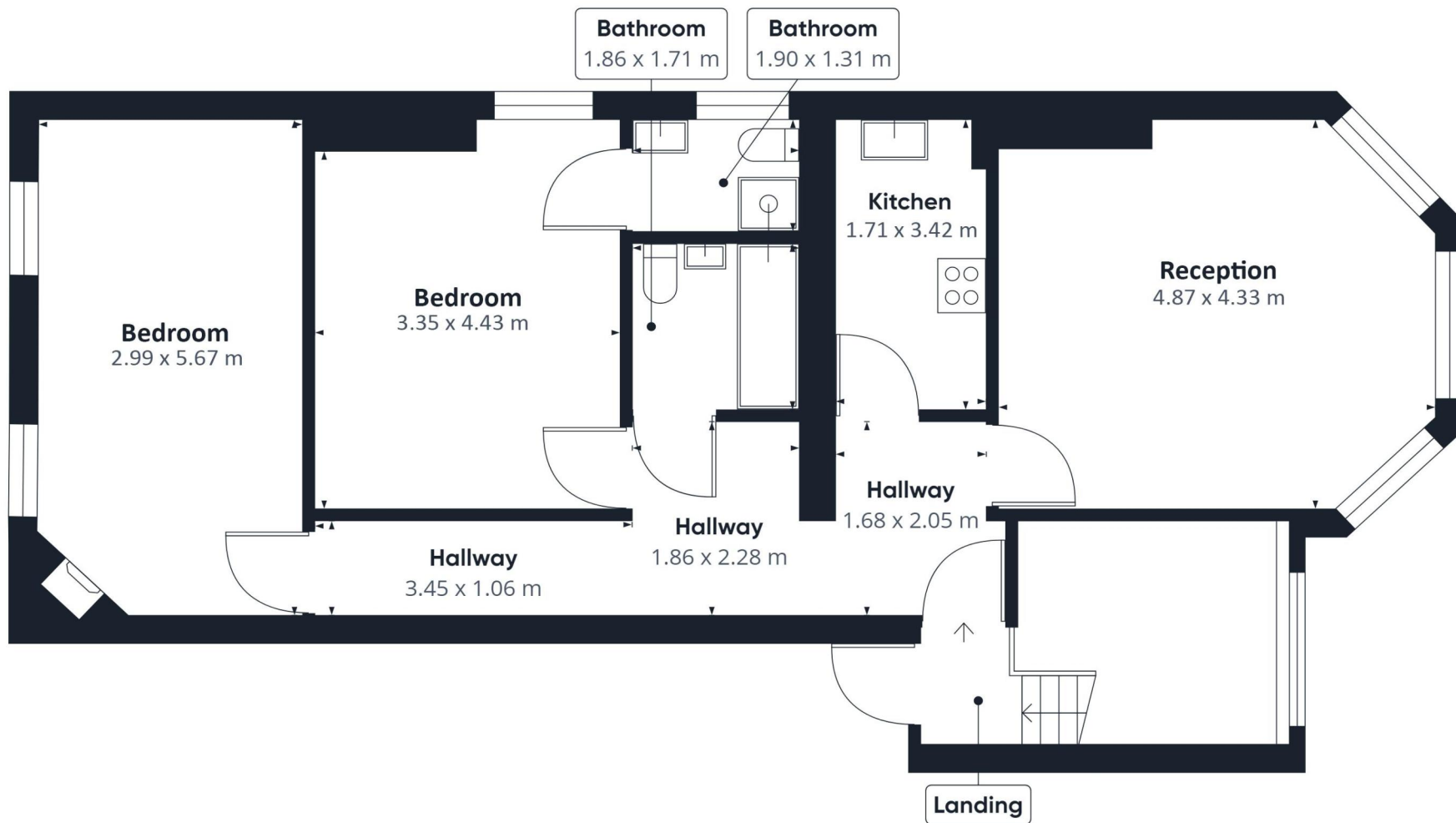
4.9 Stars | 132 Reviews

Find us on social media

-  vitaproperties
-  VitaProperties
-  VitaProperties



Map data ©2024



Approximate total area⁽¹⁾
80.31 m²

(1) Excluding balconies and terraces

While every attempt has been made to ensure accuracy, all measurements are approximate, not to scale. This floor plan is for illustrative purposes only.

GIRAFFE360