



Park Crescent, Regents Park, London W1B .| £1,450

- Spacious Living Area
- 24 Hour Concierge
- Swimming Pool
- Private Communal Gardens

- Sauna
- Parking

"Vita Properties have been tremendously helpful throughout the process of securing/renting my flat. Informative about the property, prompt communication, easy to use dashboard for sharing of information, and pleasant to work with. Highly recommend!"

Welcome to London's most exquisite development on Park Crescent! Experience luxury living in this fantastic one-bedroom apartment, perfectly situated on the lower ground floor. With approximately 732 square feet of meticulously designed space, this residence offers a harmonious blend of style and comfort.

Step into the spacious living area, where you can relax and entertain guests in a truly inviting atmosphere. The master bedroom boasts an en-suite bathroom, providing a private sanctuary for relaxation and rejuvenation. Additionally, a large utility room and a separate WC offer convenience and practicality.

As a resident of this remarkable building, you gain exclusive access to a range of exceptional on-site facilities. Immerse yourself in the 20-meter pool, where you can enjoy invigorating swims or simply unwind after a long day. Indulge in the soothing ambience of the sauna and steam room, perfect for unwinding and promoting overall well-being.

Maintaining an active lifestyle is effortless with the well-equipped gym, offering state-of-the-art exercise equipment for your fitness needs. For those seeking entertainment, a cinema room awaits, where you can enjoy your favorite movies in a private and luxurious setting.

Providing a seamless living experience, a 24-hour concierge service is at your disposal, ensuring all your needs are met and enhancing your sense of security and convenience.

Nestled in a prestigious location, this one-bedroom apartment offers an unparalleled lifestyle. Explore the vibrant surroundings, including nearby parks, trendy shops, and renowned dining establishments, all within easy reach.



Flat  
Available  
to Let



x 1  
x 1  
x 1



Oliver Kent

 [oliver.kent@vitaproperties.uk](mailto:oliver.kent@vitaproperties.uk)  
 +4477 7274 0351



"I was very impressed with Vita and their network of buyers. When the sale of my flat fell through (twice) they worked extremely hard to find new buyers in a difficult market - thank you!"

---





"Working with Vita properties has been a smooth experience! No complaints at all. Our letting agent, Diana has been fantastic and very helpful throughout the whole process. I would highly recommend both Vita properties and Diana."

---



"I used Vita properties to find a flat recently and it was an overall professional, personalised and positive experience. Saira went the extra mile to accommodate to our needs and quick to help us whenever possible."

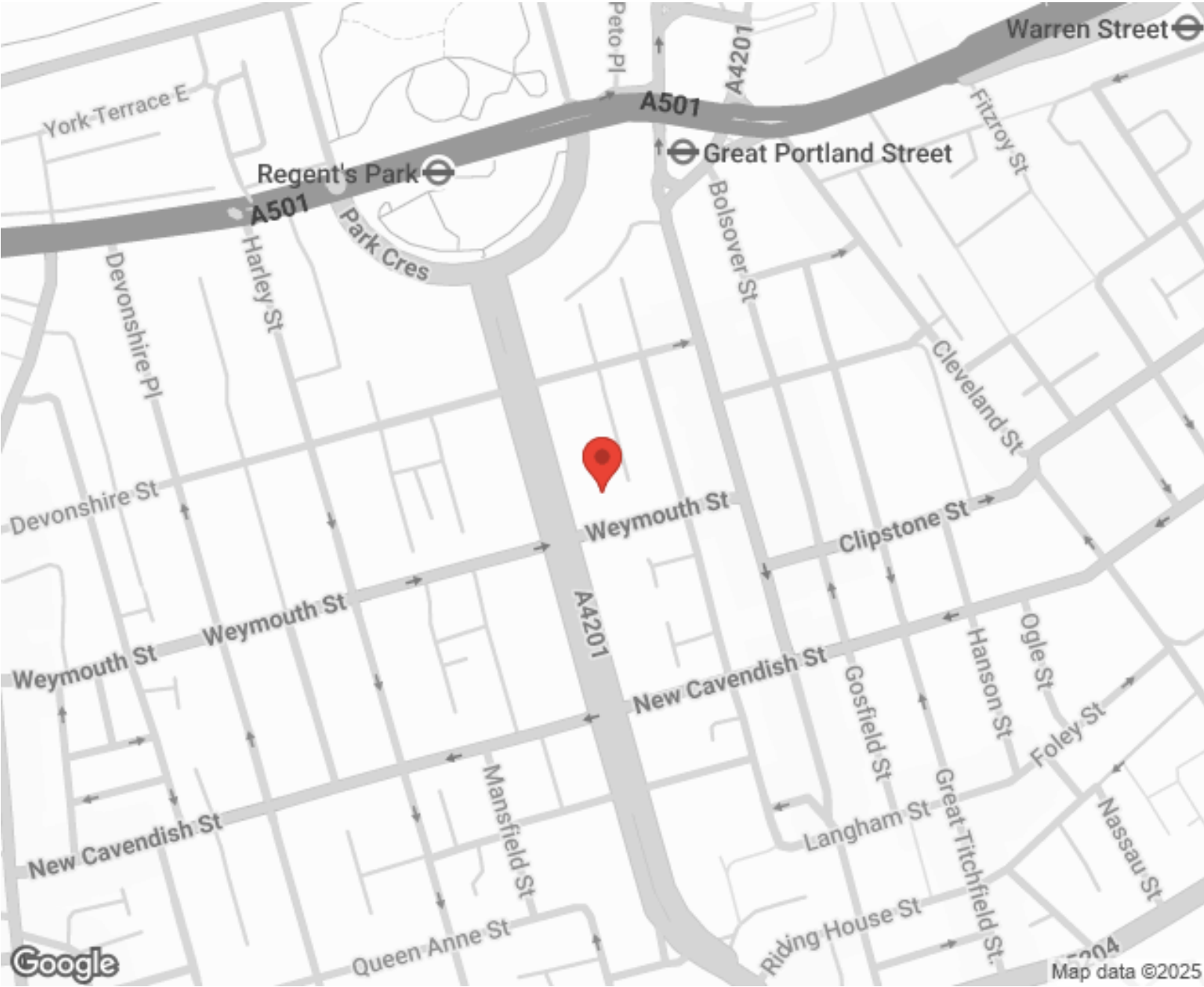
---



MORE INFO, PICTURES,  
CONTACT ON  
OUR WEBSITE



"Vita Properties is a very professional agency. My experience with them was incredible and the entire team was very helpful and kind throughout the renting process. I'd highly recommend!"



Energy Efficiency Rating		
	Current	Potential
Very energy efficient - lower running costs		
(92+) A		
(81-91) B	84	84
(69-80) C		
(55-68) D		
(39-54) E		
(21-38) F		
(1-20) G		
Not energy efficient - higher running costs		
England, Scotland & Wales		EU Directive 2002/91/EC

SCAN FOR MORE  
GOOGLE REVIEWS

Google  
★★★★★  
4.9 Stars | 132 Reviews

Find us on social media

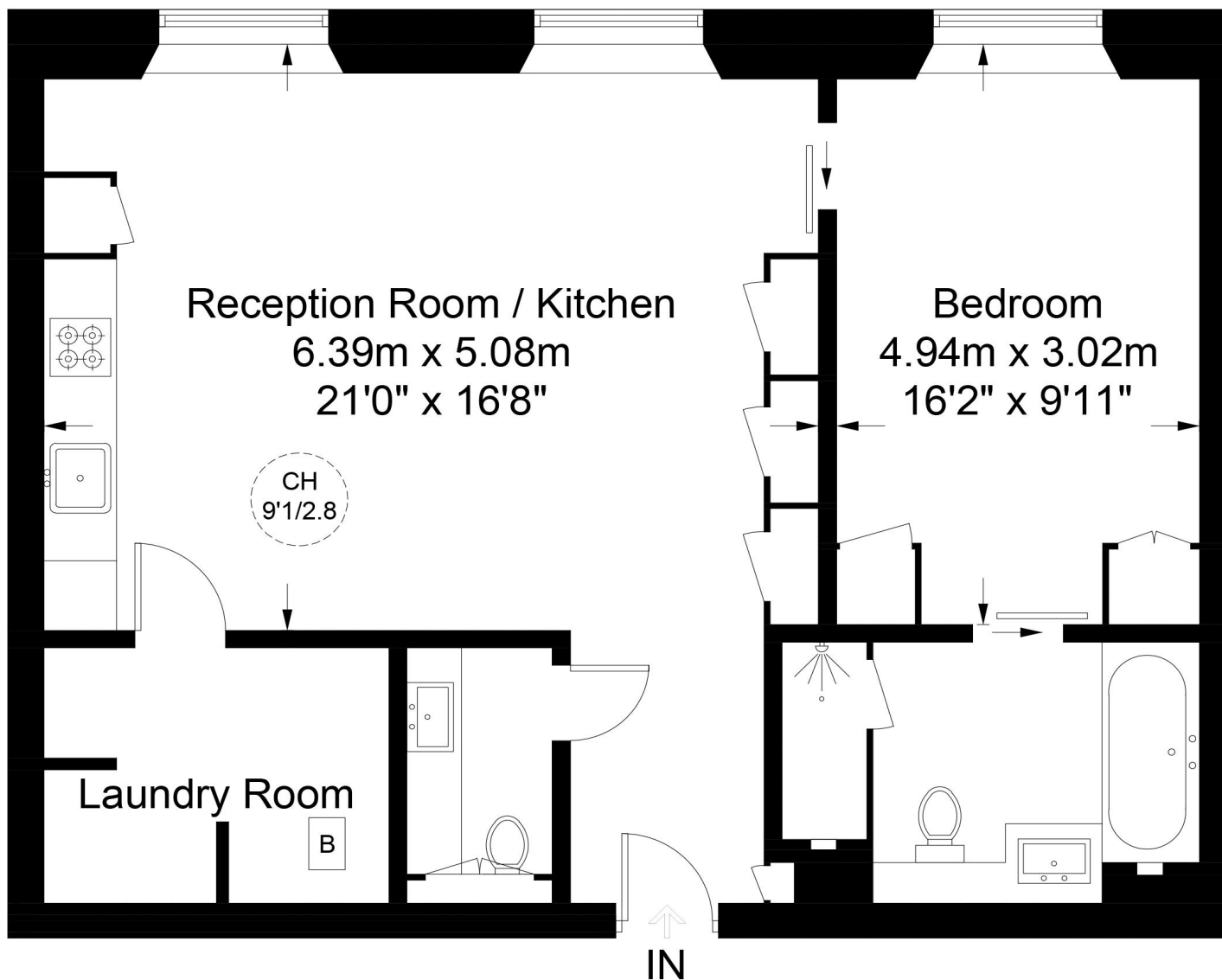
vitaproperties  
 VitaProperties  
 VitaProperties





# Park Crescent, W1B

Approximate Gross Internal Area = 747 sq ft / 69.4 sq m



## Lower Ground Floor



**Certified  
Property  
Measurer**

This plan is for layout guidance only. Not drawn to scale unless stated. Windows and door openings are approximate. Whilst every care is taken in the preparation of this plan, please check all dimensions, shapes and compass bearings before making any decisions reliant upon them. (ID978145)