



Alma Square, St Johns Wood, London NW8 .| £5,000,000

- Terraced House
- Set Across Five Floors
- Access to Communal Gardens
- High Specification

- Chain free

"Vita Properties have been tremendously helpful throughout the process of securing/renting my flat. Informative about the property, prompt communication, easy to use dashboard for sharing of information, and pleasant to work with. Highly recommend!"

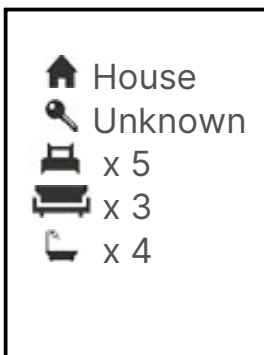
St John's Wood is a highly coveted residential area nestled within the City of Westminster, northwest London. Renowned for its prestigious status and affluence, this neighborhood exudes sophistication and charm. With its elegant tree-lined streets, picturesque architecture, and serene atmosphere, St John's Wood has long been a sought-after destination for those in search of a refined and upscale lifestyle.

One of the notable highlights of St John's Wood is its close proximity to the magnificent Regents Park. As one of the iconic Royal Parks of London, Regents Park spans an impressive 395 acres of lush green spaces, meticulously maintained gardens, and tranquil lakes. It serves as an urban sanctuary, offering a serene retreat from the bustling city streets. Residents and visitors alike can partake in a variety of recreational activities such as leisurely walks, invigorating jogs, scenic cycling routes, or even leisurely boating on the park's picturesque lakes.

Regents Park is not only a haven for nature enthusiasts but also home to an array of captivating attractions.

One such prominent landmark is the world-famous London Zoo, where visitors can marvel at an extensive collection of diverse animal species and embark on an immersive wildlife adventure. Additionally, the park boasts the enchanting Queen Mary's Gardens, known for its captivating rose gardens and vibrant floral displays, providing a feast for the senses. Moreover, the Open Air Theatre within the park offers a unique opportunity to relish live performances against the backdrop of nature's beauty, creating a truly magical experience, particularly during the summer months.

Beyond the allure of nature and recreational offerings, St John's Wood and Regents Park are surrounded by an abundance of cultural and lifestyle amenities.



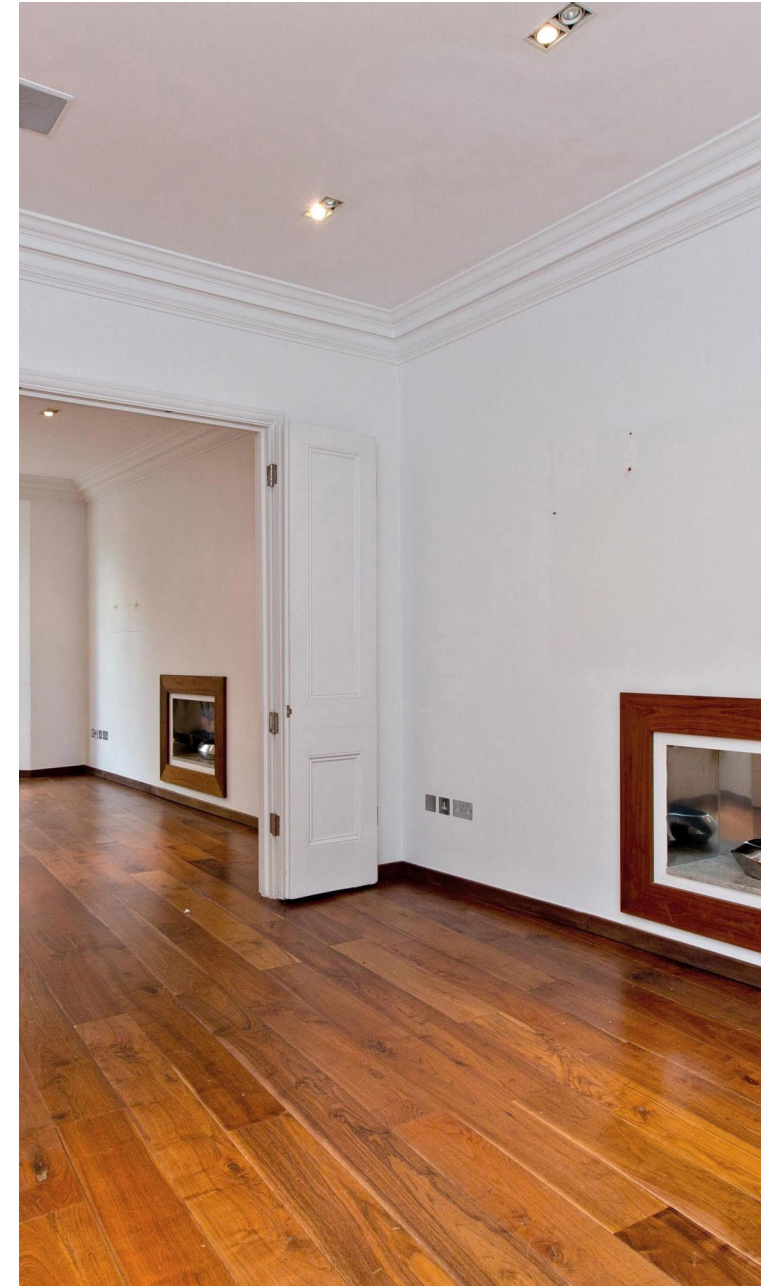
Jonathan Singer

 jonathan.singer@vitaproperties.uk

 +4478 8428 6414



"I was very impressed with Vita and their network of buyers. When the sale of my flat fell through (twice) they worked extremely hard to find new buyers in a difficult market - thank you!"



"Working with Vita properties has been a smooth experience! No complaints at all. Our letting agent, Diana has been fantastic and very helpful throughout the whole process. I would highly recommend both Vita properties and Diana."



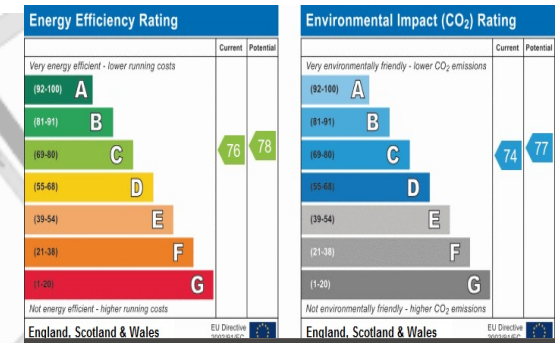
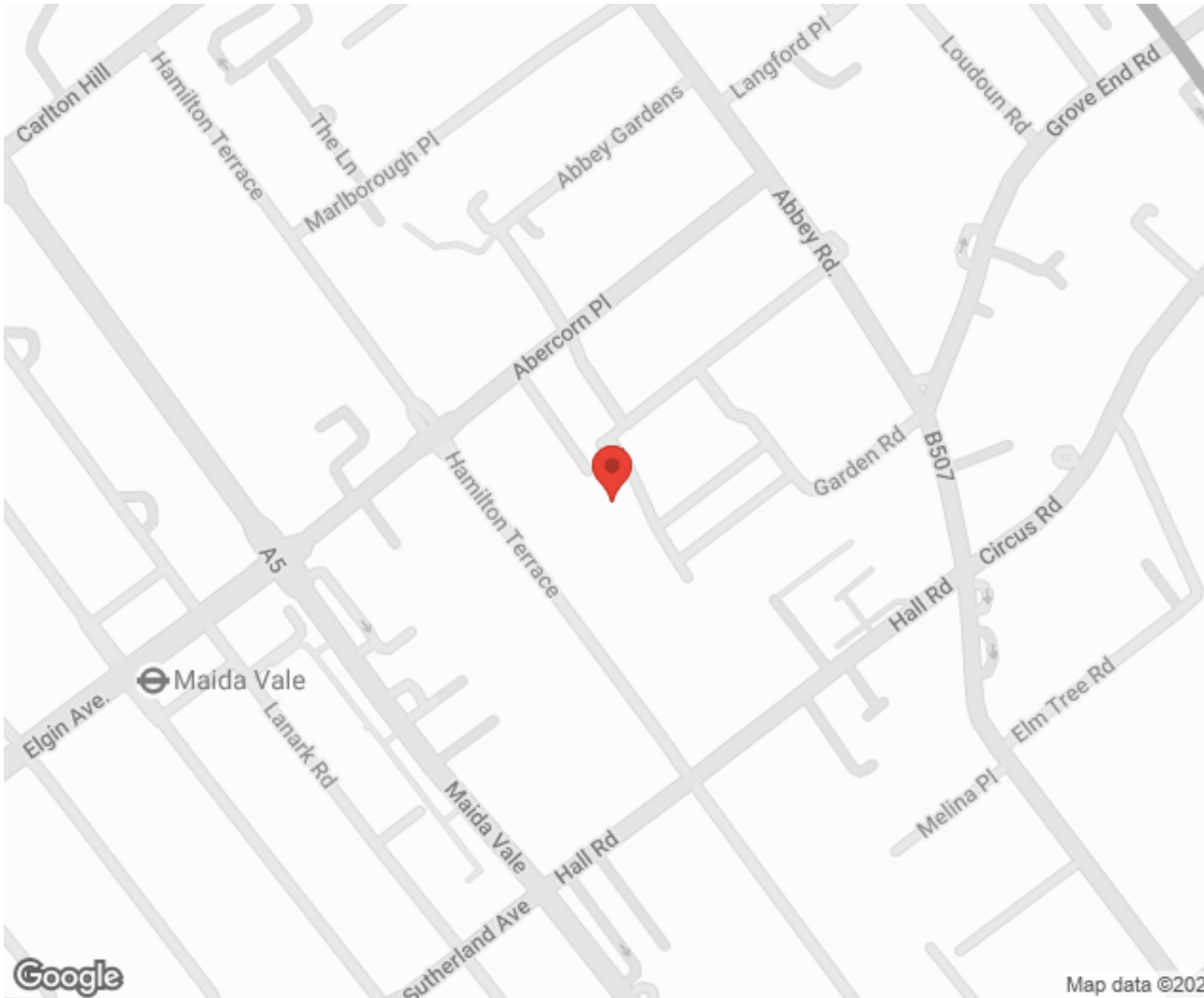
"I used Vita properties to find a flat recently and it was an overall professional, personalised and positive experience. Saira went the extra mile to accommodate to our needs and quick to help us whenever possible."



**MORE INFO, PICTURES,
CONTACT ON
OUR WEBSITE**



"Vita Properties is a very professional agency. My experience with them was incredible and the entire team was very helpful and kind throughout the renting process. I'd highly recommend!"



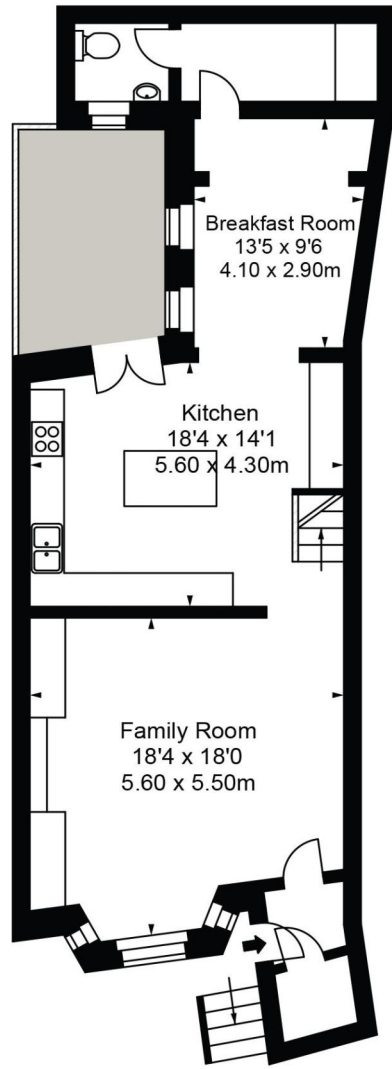
SCAN FOR MORE GOOGLE REVIEWS

Google
★★★★★
4.9 Stars | 132 Reviews

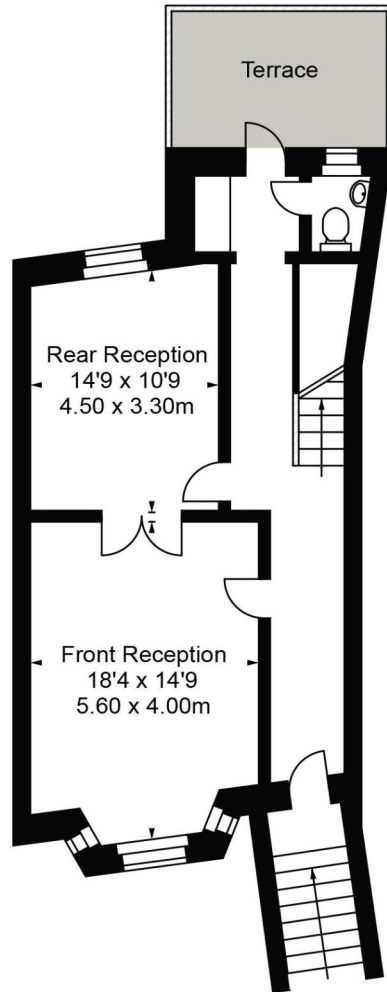
Find us on social media

- vitaproperties
- VitaProperties
- VitaProperties

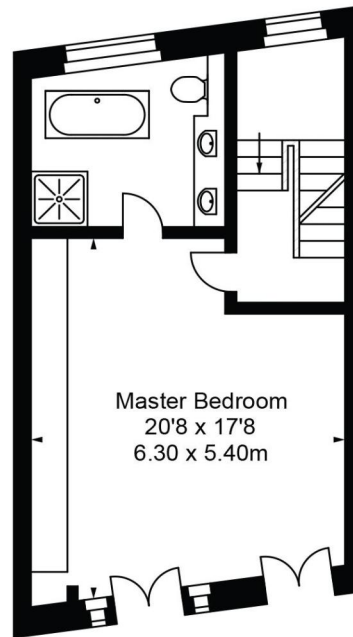
Alma



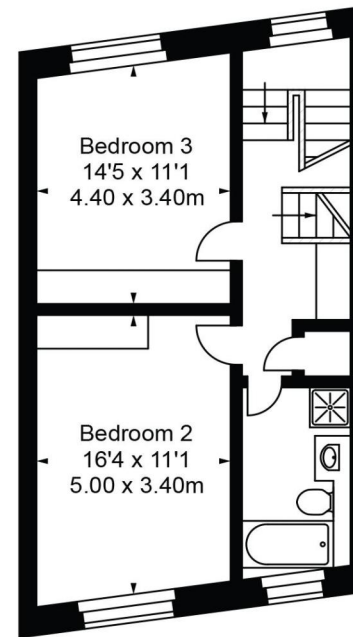
Lower Ground Floor



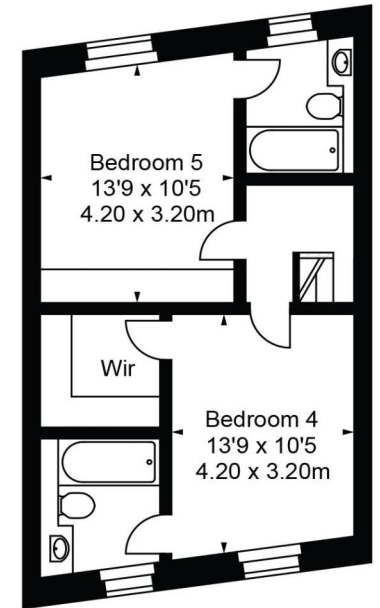
Raised Ground Floor



First Floor



Second Floor



Top Floor

Approx Gross Internal Area 3109 Sq Ft - 288.79 Sq M

FOR ILLUSTRATIVE PURPOSES ONLY. NOT TO SCALE.

Whilst every attempt has been made to ensure the accuracy of the floorplan shown, all measurements, positioning, fixtures, fittings and any other data shown are an approximate interpretation for illustrative purposes only and are not to scale. No responsibility is taken for any error, omission, misstatement or use of data shown.

Floor plan by www.bestangle.co.uk