



Upper Park Road, Belsize Park, London NW3 .| £1,300

- Area is 1300sq ft +
- Solid oak flooring to ground.
- Off Street Parking
- Modern Fitted Kitchen

- Moments to Transport and Shops
- Close to Schools

"Vita Properties have been tremendously helpful throughout the process of securing/renting my flat. Informative about the property, prompt communication, easy to use dashboard for sharing of information, and pleasant to work with. Highly recommend!"

Discover this stunning and modern 4-bedroom terraced house available for rent. With its contemporary style, this house spans three floors and offers a range of desirable features, including a small garden, off-street parking for two cars, and a roof terrace.

Conveniently situated within walking distance to the vibrant amenities of South End Green and Belsize Park, this house provides easy access to everything you need for a comfortable and convenient lifestyle. South End Green, home to the Hampstead Heath Overground station, offers excellent transportation links, allowing you to explore the surrounding areas with ease. Belsize Park, located in close proximity, provides access to the Northern Line, further enhancing your connectivity to the rest of London.

Step inside this contemporary house and experience spacious living across three well-designed floors. The ground floor features a stylish open-plan living area, creating a perfect space for relaxation and entertaining.

The modern kitchen is fully equipped with high-quality appliances, making it a joy to prepare meals and dine with family and friends.

As you ascend to the upper floors, you will find four well-proportioned bedrooms, offering ample space for rest and privacy. Two of the bedrooms benefit from en-suite facilities, providing added convenience. The house also includes a stylish family bathroom, ensuring that everyone's needs are met.

Outside, the small garden offers a tranquil retreat where you can unwind and enjoy some fresh air. The roof terrace provides an additional outdoor space, perfect for hosting gatherings or simply enjoying the views.

🏠 House
🔑 Available
to Let
🛏 x 4
🚿 x 1
🚗 x 2



Saira Ishfaq

✉️ saira@vitaproperties.uk
☎️ +4475 5575 4510



"I was very impressed with Vita and their network of buyers. When the sale of my flat fell through (twice) they worked extremely hard to find new buyers in a difficult market - thank you!"



"Working with Vita properties has been a smooth experience! No complaints at all. Our letting agent, Diana has been fantastic and very helpful throughout the whole process. I would highly recommend both Vita properties and Diana."



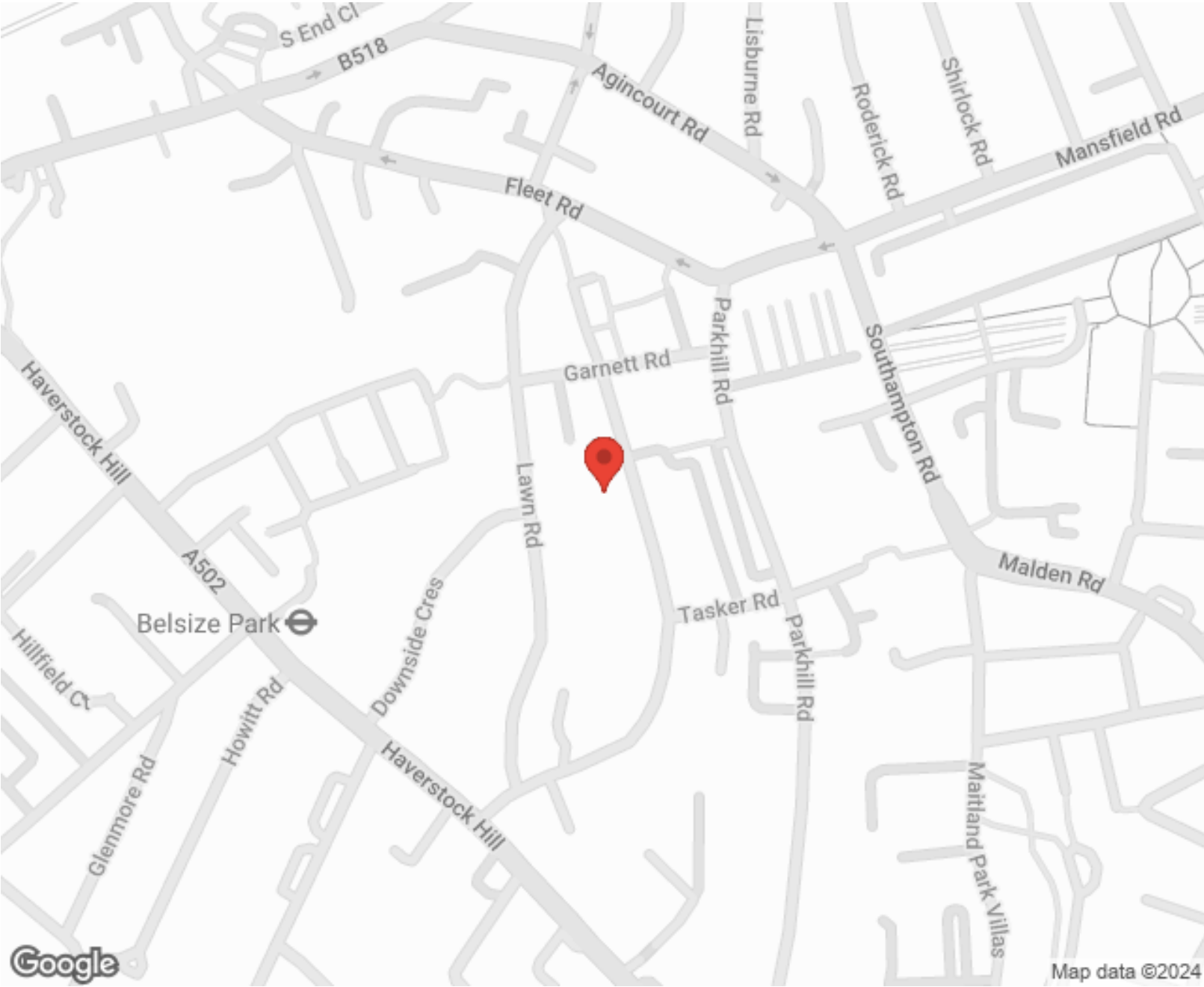
"I used Vita properties to find a flat recently and it was an overall professional, personalised and positive experience. Saira went the extra mile to accommodate to our needs and quick to help us whenever possible."



**MORE INFO, PICTURES,
CONTACT ON
OUR WEBSITE**



"Vita Properties is a very professional agency. My experience with them was incredible and the entire team was very helpful and kind throughout the renting process. I'd highly recommend!"



| Score | Energy rating | Current | Potential |
|-------|---------------|---------|-----------|
| 92+ | A | | |
| 81-91 | B | | |
| 69-80 | C | | |
| 55-68 | D | 58 D | 80 C |
| 39-54 | E | | |
| 21-38 | F | | |
| 1-20 | G | | |

SCAN FOR MORE
GOOGLE REVIEWS

Google
★★★★★
4.9 Stars | 132 Reviews

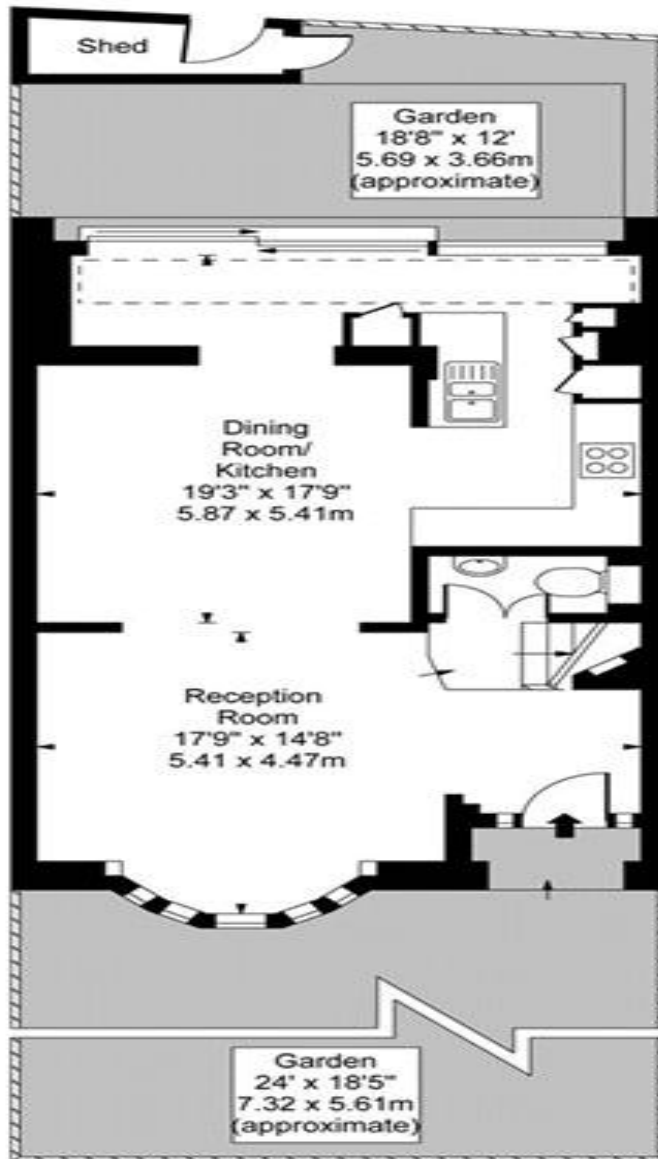
Find us on social media

vitaproperties

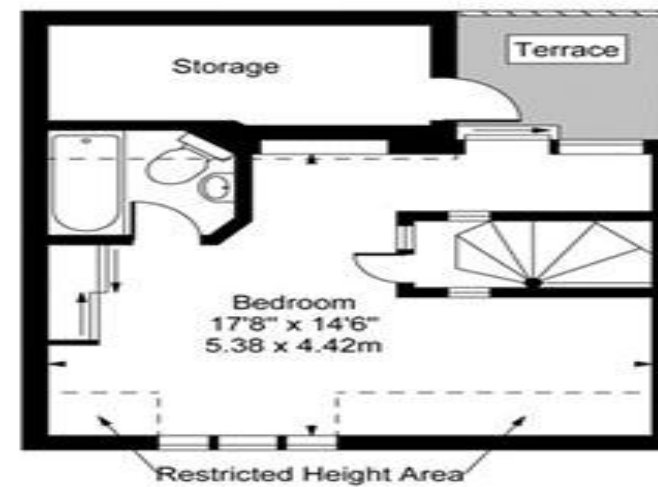
VitaProperties

VitaProperties

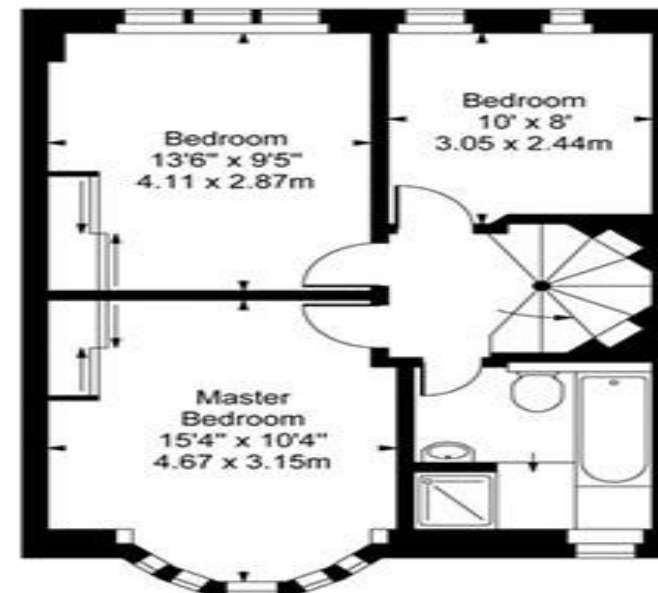
Upper Park Road, NW3



Ground Floor



Second Floor



First Floor

Approx Gross Internal Area **1310 Sq Ft - 121.70 Sq M**
(Including Restricted Height Area)
(Excluding Storage)