



Marlborough Mansions, Cannon Hill, West Hampstead, London NW6 .| £1,400,000

- Share of freehold
- Mansion block
- Onsite Management
- Communal Gardens
- Moments to West Hampstead and Hampstead
- Additional storage locker perfect for bikes and suitcases

"Vita Properties have been tremendously helpful throughout the process of securing/renting my flat. Informative about the property, prompt communication, easy to use dashboard for sharing of information, and pleasant to work with. Highly recommend!"

Vita Properties are delighted to offer this beautifully presented & full of character 4 bed apartment which maintains many of its charming original features, bright bay windows and one original feature fireplace. The property is spaced over an impressive floor area of approx 1900 sq ft, comprising of 2 double bedrooms & 2 single bedrooms, a large double aspect reception room, 2 bathrooms, a large, bright kitchen/breakfast room, utility room, communal gardens and onsite management company.

This fabulous property situated within the sought-after BAM Estate is conveniently located in the heart of West Hampstead and benefits a short walk to large selection of boutique shops, restaurants and excellent public transport links including West Hampstead tube station (Jubilee Line) & West Hampstead (Thames Link & Overground)



Oliver Kent

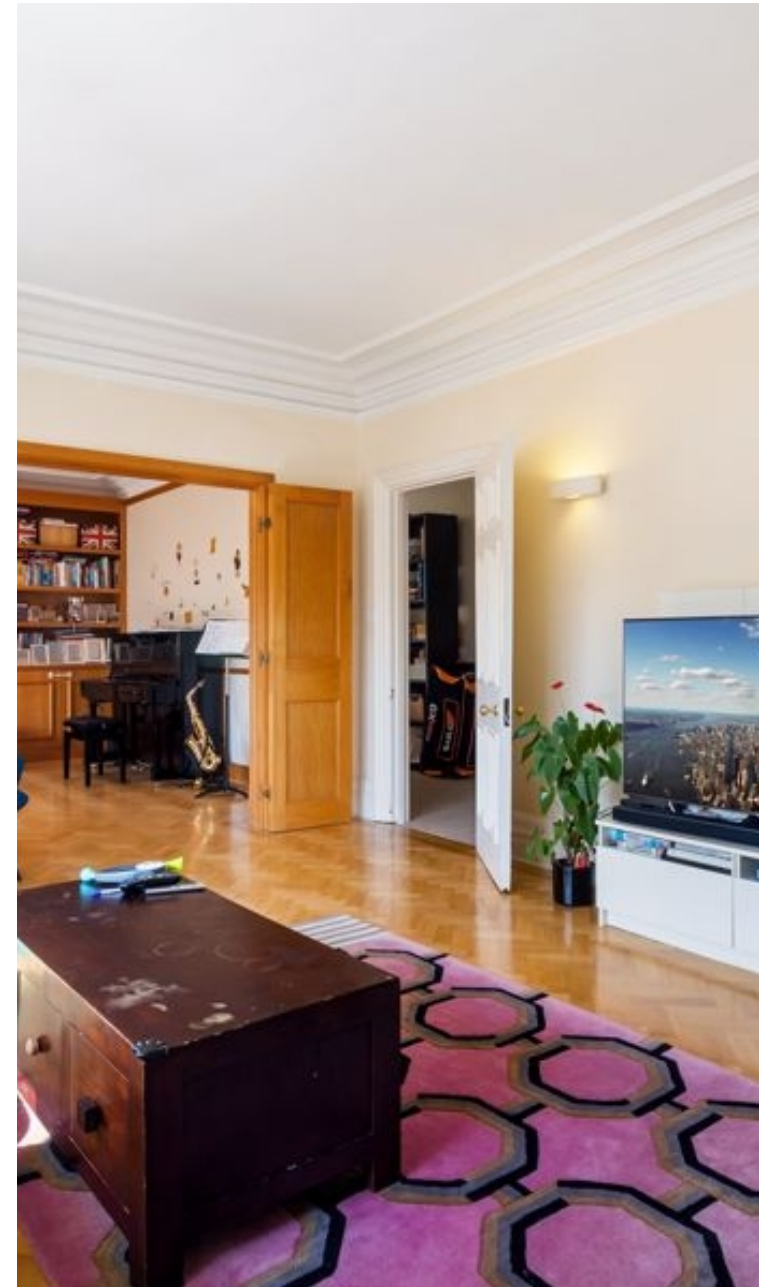
✉ oliver.kent@vitaproperties.uk
☎ +4477 7274 0351



🏠	Flat
🔑	Share of Freehold
🛏️	x 4
🚿	x 2
🚻	x 2



"I was very impressed with Vita and their network of buyers. When the sale of my flat fell through (twice) they worked extremely hard to find new buyers in a difficult market - thank you!"



"Working with Vita properties has been a smooth experience! No complaints at all. Our letting agent, Diana has been fantastic and very helpful throughout the whole process. I would highly recommend both Vita properties and Diana."



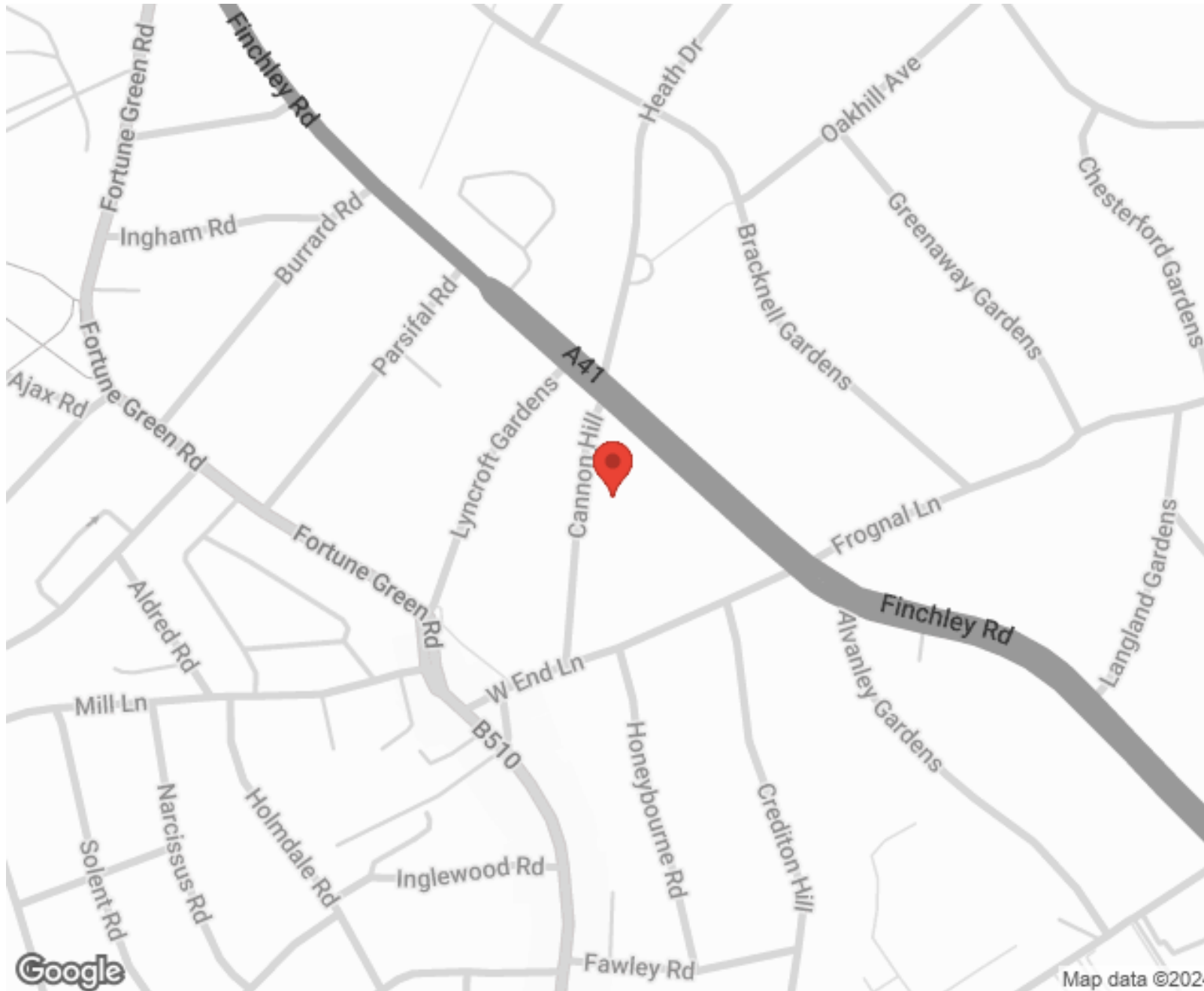
"I used Vita properties to find a flat recently and it was an overall professional, personalised and positive experience. Saira went the extra mile to accommodate to our needs and quick to help us whenever possible."



**MORE INFO, PICTURES,
CONTACT ON
OUR WEBSITE**



"Vita Properties is a very professional agency. My experience with them was incredible and the entire team was very helpful and kind throughout the renting process. I'd highly recommend!"



Energy Efficiency Rating		Current	Potential
Very energy efficient - lower running costs			
(92-100)	A		
(81-91)	B		
(69-80)	C	77	82
(55-68)	D		
(39-54)	E		
(21-38)	F		
(1-20)	G		
Not energy efficient - higher running costs			
England, Scotland & Wales		EU Directive 2002/91/EC	

SCAN FOR MORE
GOOGLE REVIEWS






Google



4.9 Stars | 132 Reviews

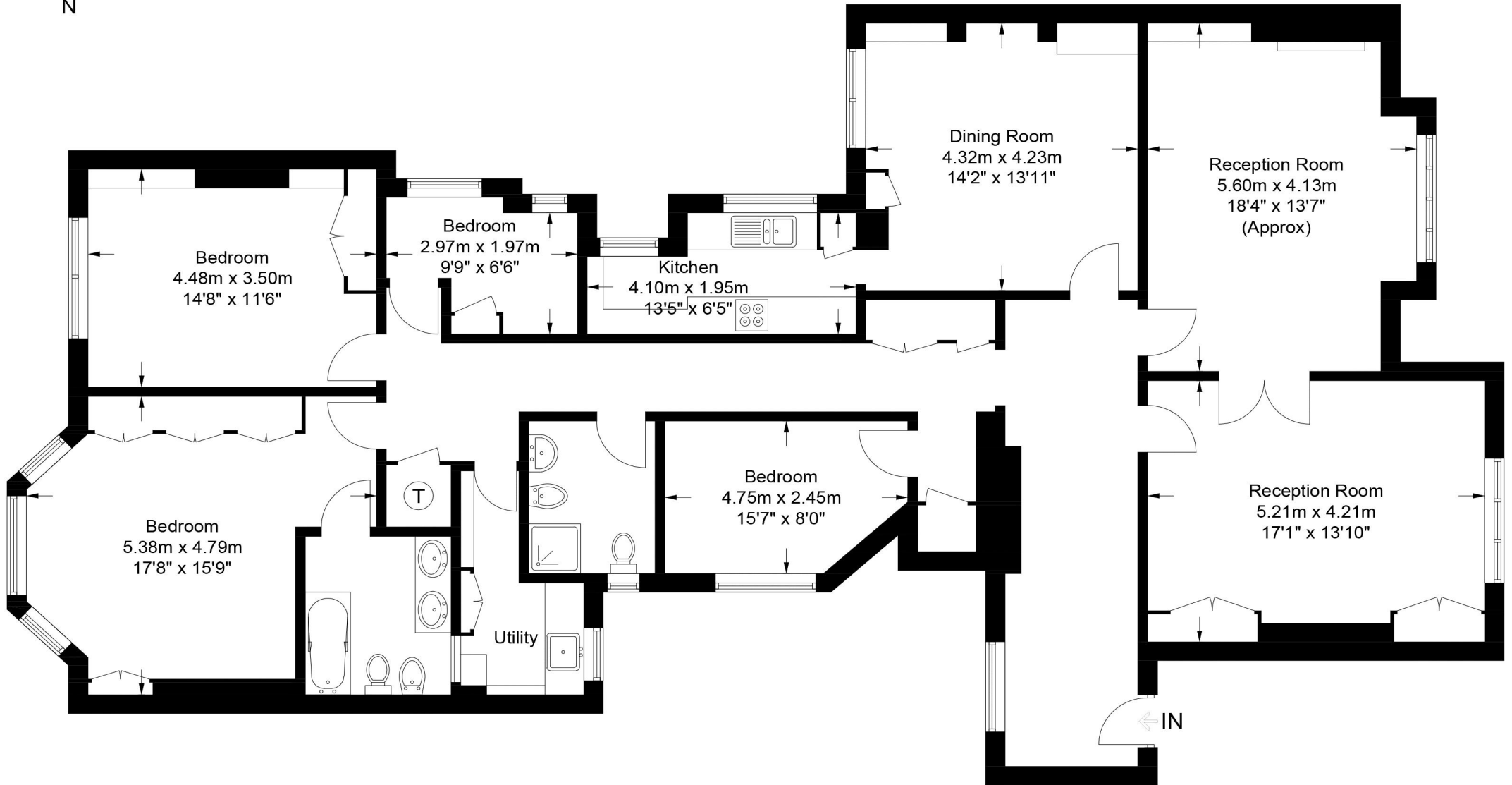
Find us on social media

-  vitaproperties
-  VitaProperties
-  VitaProperties



Marlborough Mansions, NW6

Approximate Gross Internal Area = 1907 sq ft / 177.2 sq m



Third Floor



**Certified
Property
Measurer**

This plan is for layout guidance only. Not drawn to scale unless stated. Windows and door openings are approximate. Whilst every care is taken in the preparation of this plan, please check all dimensions, shapes and compass bearings before making any decisions reliant upon them. (ID959269)