



Weymouth Mews, London, W1G .| £670

- Excellent Location
- Modern
- High Ceilings
- Offered on a Furnished or Unfurnished basis

"Vita Properties have been tremendously helpful throughout the process of securing/renting my flat. Informative about the property, prompt communication, easy to use dashboard for sharing of information, and pleasant to work with. Highly recommend!"

This stunning one bedroom apartment is located on the ground floor of a quiet mews house. This bright and airy property features huge windows, a large reception with a fully integrated open plan kitchen, a sizeable master bedroom with storage in abundance, a contemporary bathroom

Weymouth Mews is ideally located around the corner from Marylebone High Street and can be accessed from both New Cavendish Street and Weymouth Street. Located moments from Baker Street tube station (Hammersmith & City, Bakerloo, Jubilee, Circle and Metropolitan, Zone 1) and the boutique shops and cafes along Marylebone High Street.





Flat



Available to Let



x 1



x 1



x 1



"I was very impressed with Vita and their network of buyers. When the sale of my flat fell through (twice) they worked extremely hard to find new buyers in a difficult market - thank you!"



"Working with Vita properties has been a smooth experience! No complaints at all. Our letting agent, Diana has been fantastic and very helpful throughout the whole process. I would highly recommend both Vita properties and Diana."



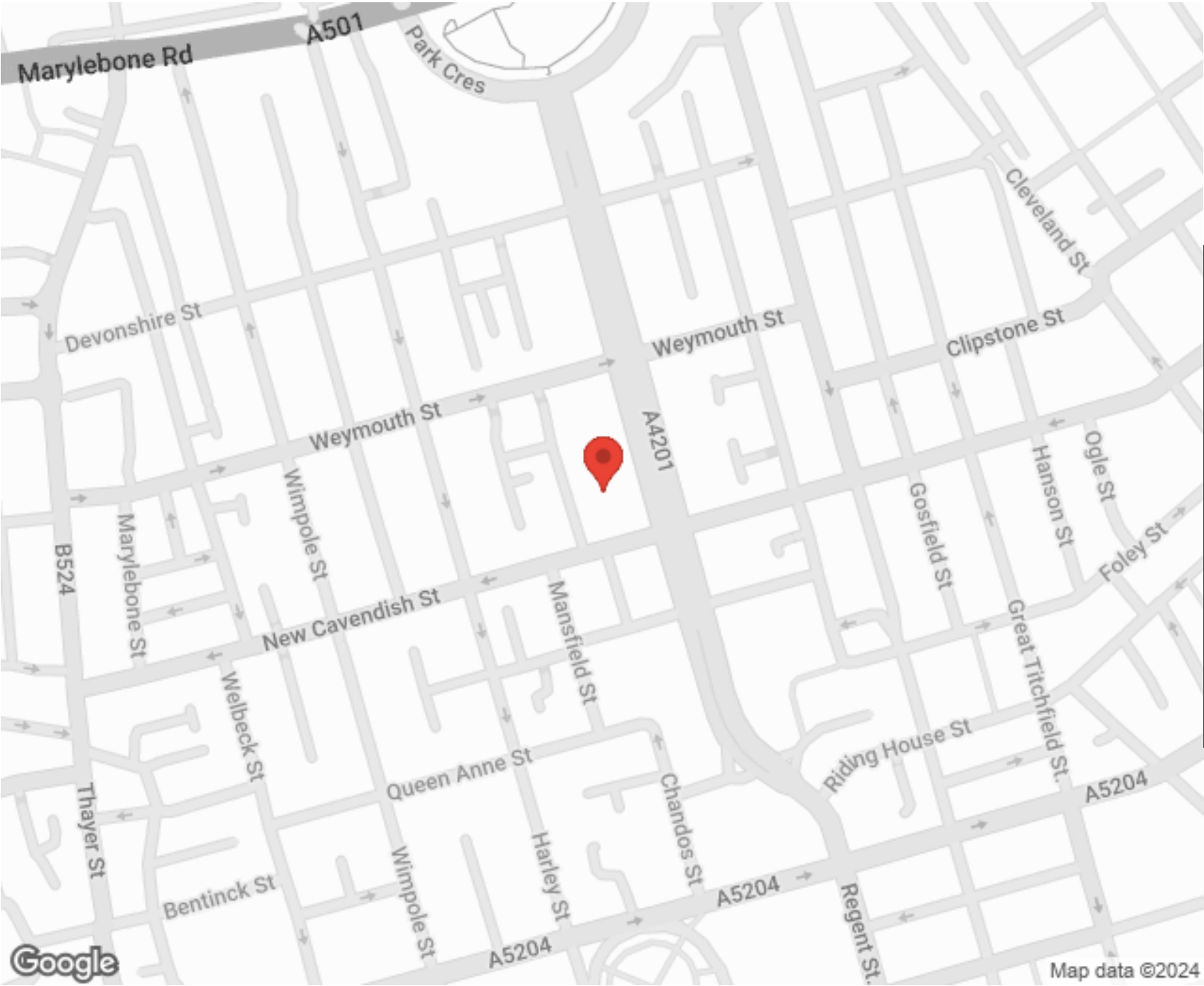
"I used Vita properties to find a flat recently and it was an overall professional, personalised and positive experience. Saira went the extra mile to accommodate to our needs and quick to help us whenever possible."



**MORE INFO, PICTURES,
CONTACT ON
OUR WEBSITE**



"Vita Properties is a very professional agency. My experience with them was incredible and the entire team was very helpful and kind throughout the renting process. I'd highly recommend!"



Energy efficiency rating for this property

This property's current energy rating is D. It has the potential to be C.

[See how to improve this property's energy performance.](#)

Score	Energy rating	Current	Potential
92+	A		
81-91	B		
69-80	C		80 C
55-68	D	62 D	
39-54	E		
21-38	F		
1-20	G		




The graph shows this property's current and potential energy rating.

SCAN FOR MORE
GOOGLE REVIEWS

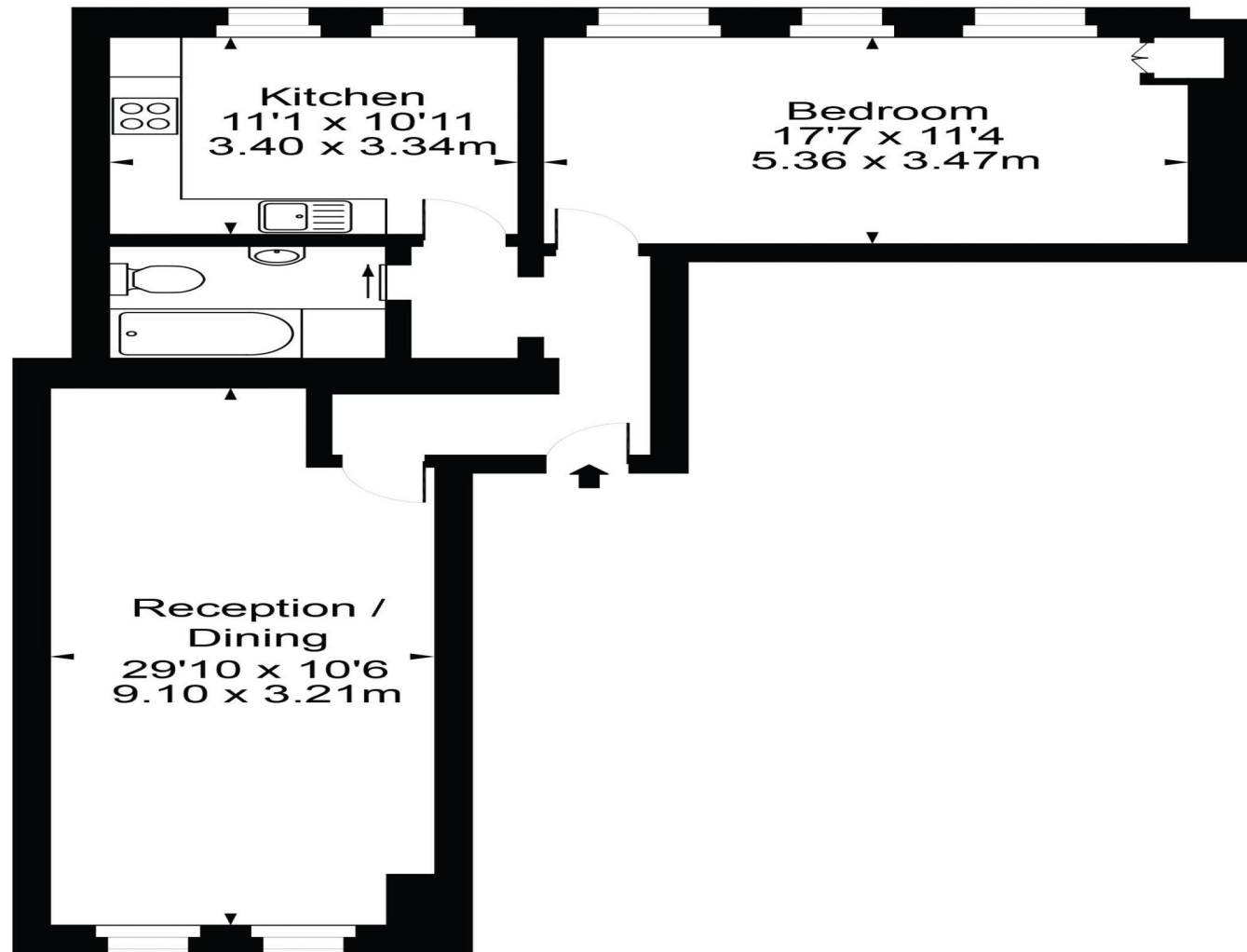
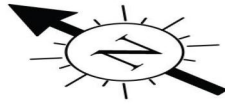


Google
★★★★★
4.9 Stars | 132 Reviews

Find us on social media

-  vitaproperties
-  VitaProperties
-  VitaProperties

Weymouth Mews



Approx Gross Internal Area 793. Sq Ft - 73.73 Sq M

FOR ILLUSTRATIVE PURPOSES ONLY. NOT TO SCALE.

Whilst every attempt has been made to ensure the accuracy of the floorplan shown, all measurements, positioning, fixtures, fittings and any other data shown are an approximate interpretation for illustrative purposes only and are not to scale. No responsibility is taken for any error, omission, miss-statement or use of data shown.
Floor plan by www.bestangle.co.uk