



Clive Court, Maida Vale, London, W9 .| £1,350,000

- Newly refurbished
- Porterage
- Lift and entry phone
- Communal hot water and heating

- Balcony
- Chain free

"Vita Properties have been tremendously helpful throughout the process of securing/renting my flat. Informative about the property, prompt communication, easy to use dashboard for sharing of information, and pleasant to work with. Highly recommend!"

No upper chain - A truly magnificent lateral apartment, having been recently modernised to elite standards and boasting impeccable attention to detail, this property offers two generous sized bedrooms and a 28 ft reception room. Using some of the finest material this property offers a fully fitted hand crafted designer kitchen offering all the latest modern conveniences and two bathrooms featuring imported Italian designed tiles and top of the range fixtures and fittings.

Situated in this well-managed block, which benefits from lift access and portage, this property is positioned in close proximity to the shops and amenities of Little Venice with Warwick Avenue and Maida Vale Underground stations in equal distance (Bakerloo Line)



Jonathan Singer

✉ jonathan.singer@vitaproperties.uk
☎ +4478 8428 6414



- 🏠 Flat
- 🔑 Share of Freehold
- 🛏 x 2
- 🛁 x 1
- 🚿 x 2



"I was very impressed with Vita and their network of buyers. When the sale of my flat fell through (twice) they worked extremely hard to find new buyers in a difficult market - thank you!"



"Working with Vita properties has been a smooth experience! No complaints at all. Our letting agent, Diana has been fantastic and very helpful throughout the whole process. I would highly recommend both Vita properties and Diana."



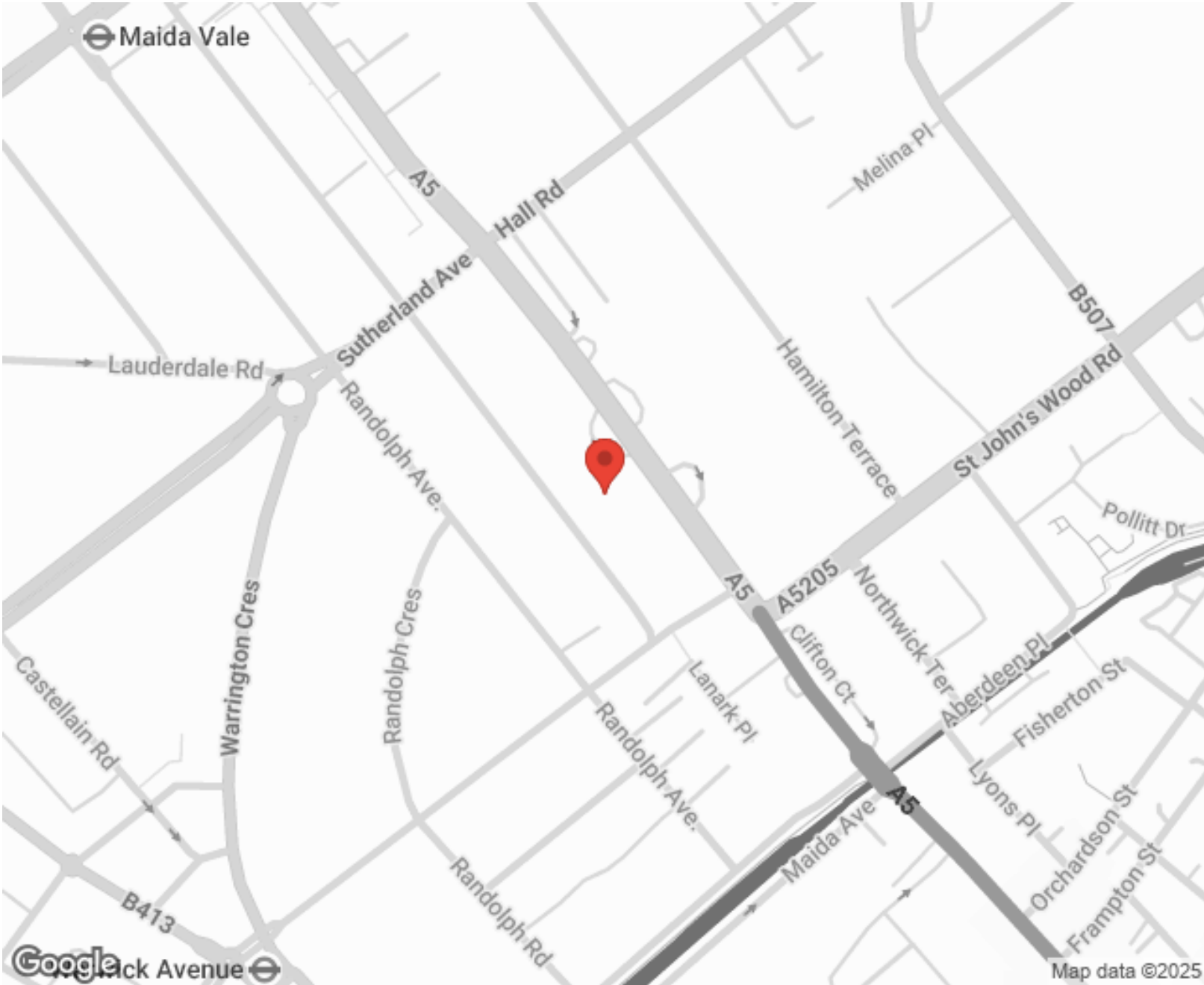
"I used Vita properties to find a flat recently and it was an overall professional, personalised and positive experience. Saira went the extra mile to accommodate to our needs and quick to help us whenever possible."



**MORE INFO, PICTURES,
CONTACT ON
OUR WEBSITE**



"Vita Properties is a very professional agency. My experience with them was incredible and the entire team was very helpful and kind throughout the renting process. I'd highly recommend!"



Energy Efficiency Rating			Environmental Impact (CO ₂) Rating		
	Current	Potential		Current	Potential
Very energy efficient - lower running costs			Very environmentally friendly - lower CO ₂ emissions		
(92-100) A			(82-100) A		83
(81-91) B			(71-91) B		
(69-80) C			(59-80) C		
(55-68) D			(45-68) D		
(39-54) E			(39-54) E		
(21-38) F			(21-38) F		
(1-20) G			(1-20) G		
Not energy efficient - higher running costs			Not environmentally friendly - higher CO ₂ emissions		
England, Scotland & Wales			England, Scotland & Wales		
EU Directive			EU Directive		

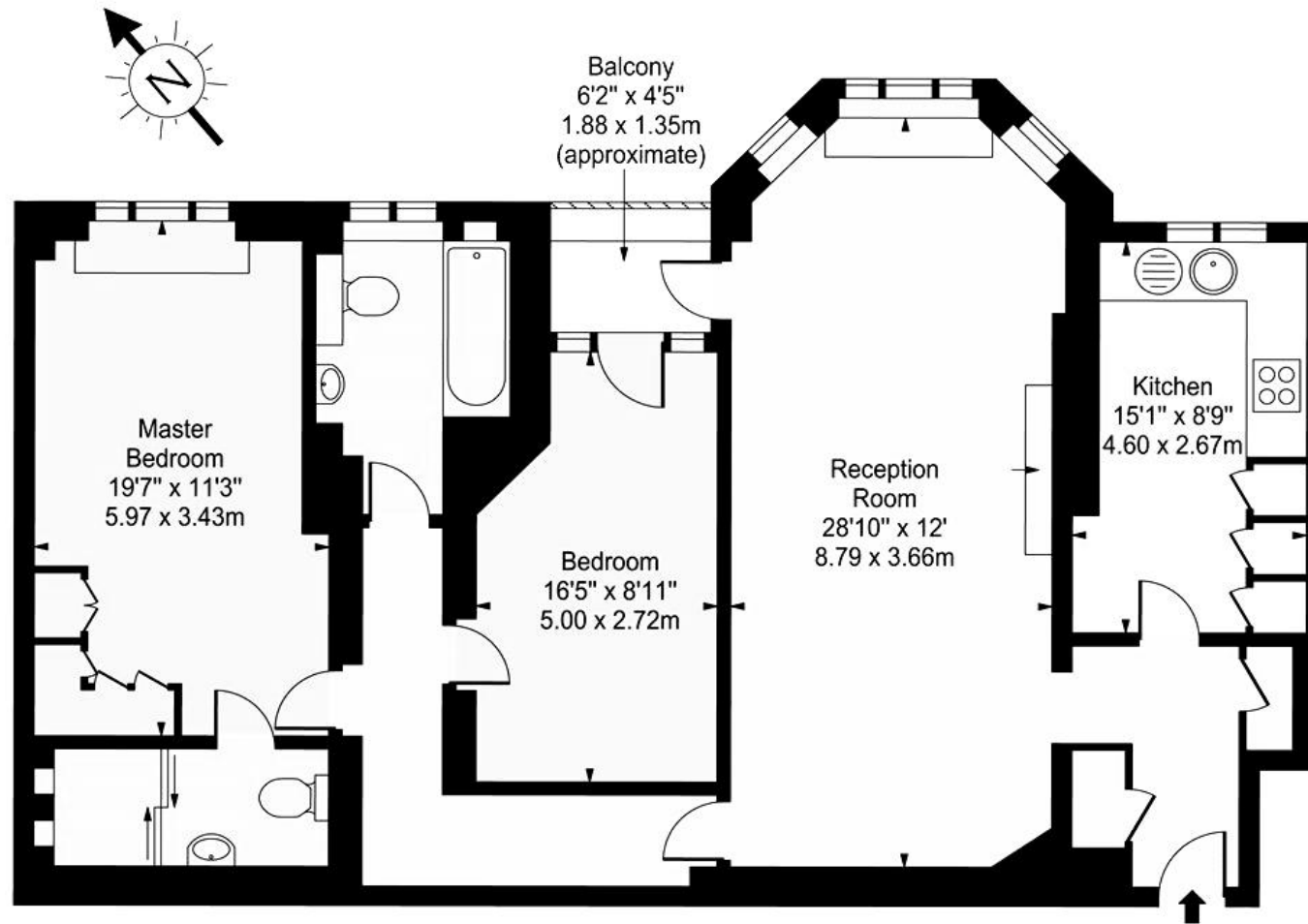
SCAN FOR MORE
GOOGLE REVIEWS

Google
★★★★★
4.9 Stars | 132 Reviews

Find us on social media

vitaproperties
 VitaProperties
 VitaProperties

Clive Court, W9



Third Floor

Approx Gross Internal Area 1172 Sq Ft - 109.02 Sq M

For Illustration Purposes Only - Not To Scale Floor Plan by www.nogaphotostudio.com Ref: No.27057

This floor plan should be used as a general outline for guidance only. Any intending purchaser or lessee should satisfy themselves by inspection, searches, enquiries and full survey as to the correctness of each statement. Any areas, measurements or distances quoted are approximate and should not be used to value a property or be the basis of any sale or let.