



Copperbeech Close, Belsize Park, London NW3 .| £969

- 0.4 miles Finchley Road
- 0.4 miles Belsize Park
- 0.5 miles Finchley Road & Frognal

"Vita Properties have been tremendously helpful throughout the process of securing/renting my flat. Informative about the property, prompt communication, easy to use dashboard for sharing of information, and pleasant to work with. Highly recommend!"

A truly stunning four bedroom house which has just been fully refurbished to a very high standard throughout situated on this highly sought after Hampstead street.

Hampstead is a highly desirable area in North central London which is located just to the north of Primrose Hill and Belsize Park. The area is steeped in history and has a huge array of impressive period properties with the wide open space of Hampstead Heath being just a short walk away. Access to Central London is easily available with a short journey on the Northern Line or via the London Overground station at Hampstead Heath.



Oliver Kent

✉ oliver.kent@vitaproperties.uk

☎ +4477 7274 0351



🏠	House
🔑	Available to Let
🛏	x 4
🛋	x 1
🚿	x 3



"I was very impressed with Vita and their network of buyers. When the sale of my flat fell through (twice) they worked extremely hard to find new buyers in a difficult market - thank you!"



"Working with Vita properties has been a smooth experience! No complaints at all. Our letting agent, Diana has been fantastic and very helpful throughout the whole process. I would highly recommend both Vita properties and Diana."



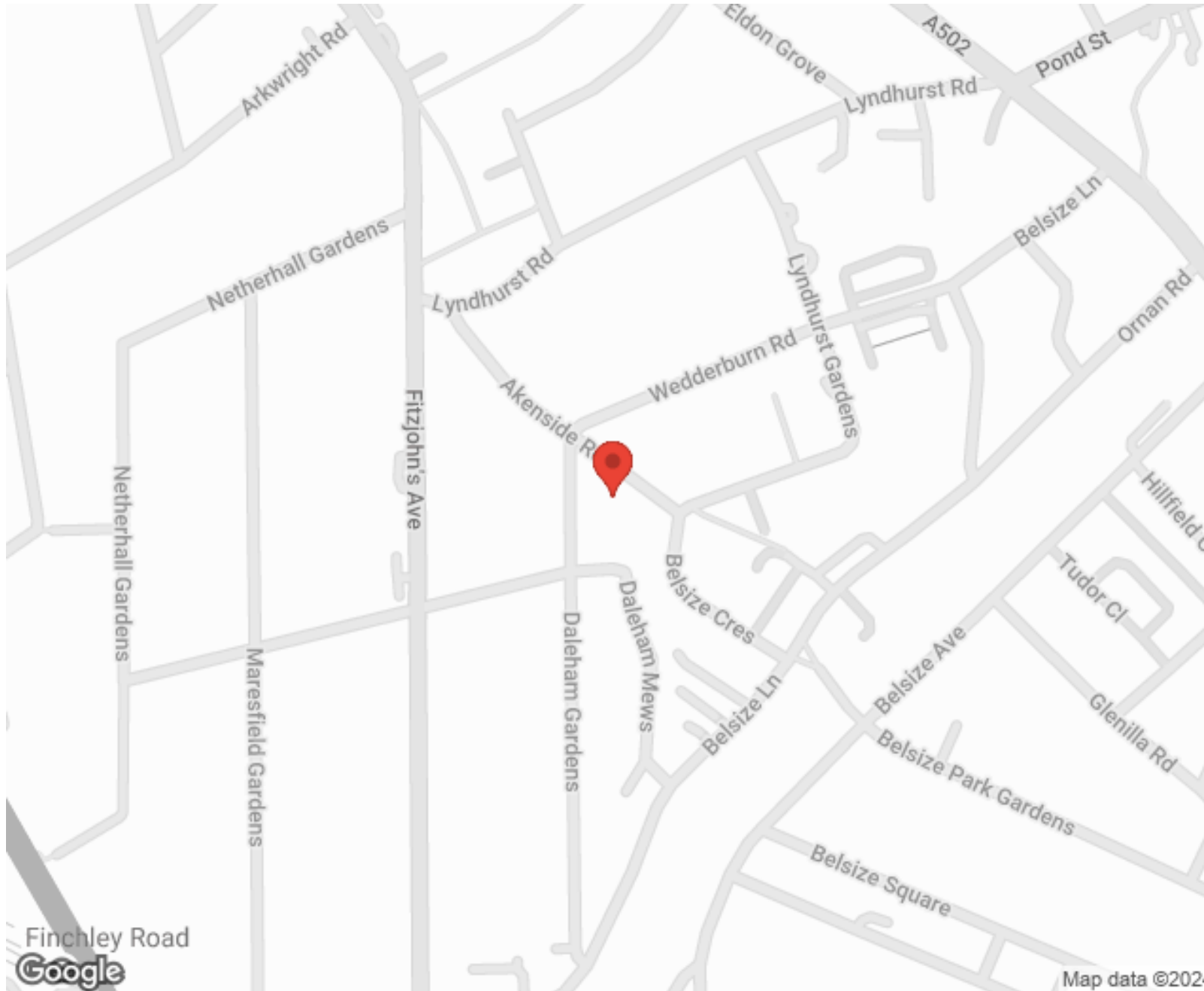
"I used Vita properties to find a flat recently and it was an overall professional, personalised and positive experience. Saira went the extra mile to accommodate to our needs and quick to help us whenever possible."



**MORE INFO, PICTURES,
CONTACT ON
OUR WEBSITE**



"Vita Properties is a very professional agency. My experience with them was incredible and the entire team was very helpful and kind throughout the renting process. I'd highly recommend!"



SCAN FOR MORE
GOOGLE REVIEWS



Google



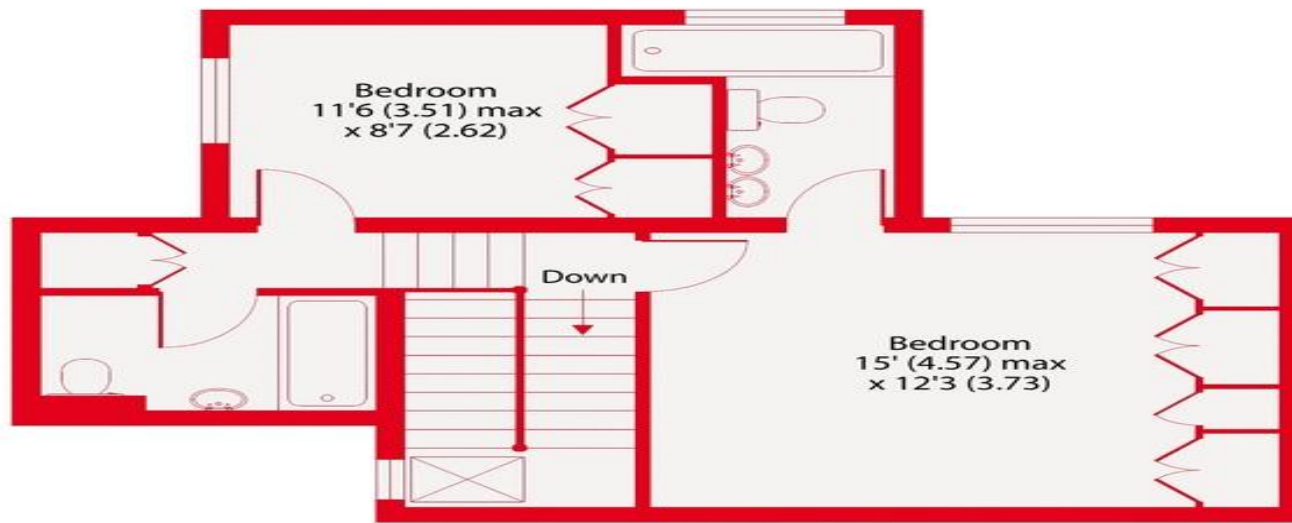
4.9 Stars | 132 Reviews

Find us on social media

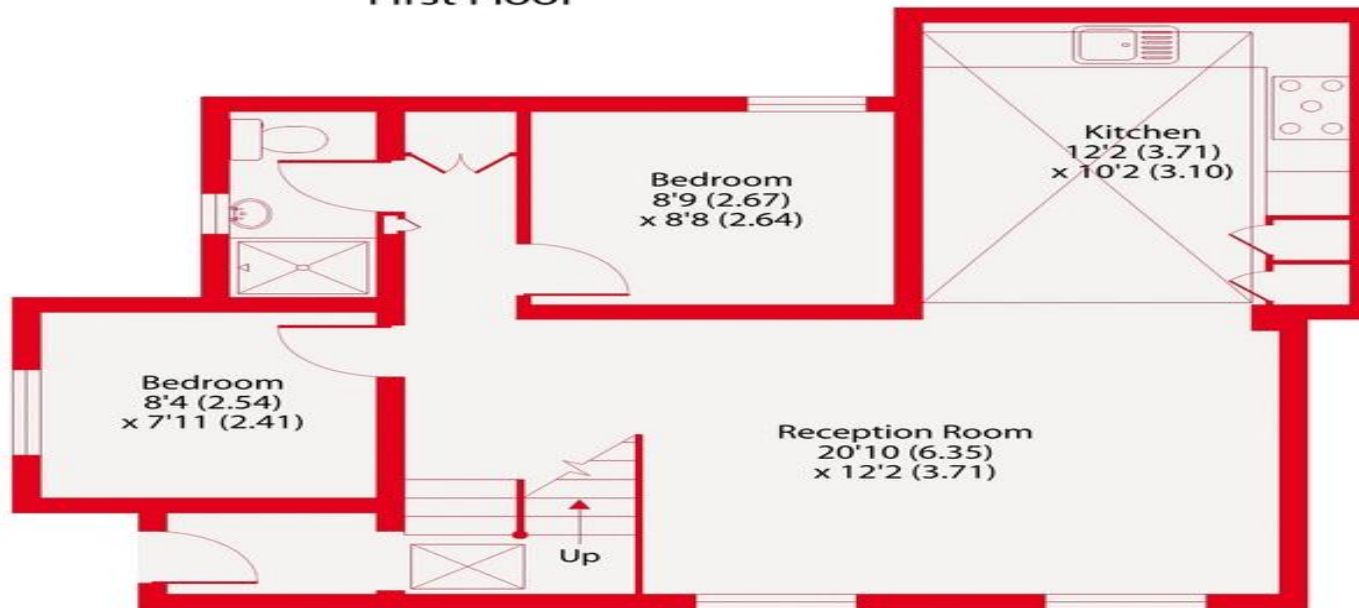
 vitaproperties

 VitaProperties

 VitaProperties



First Floor



Ground Floor

Copperbeech, NW3
Approximate Area = 1115 sq ft / 103.6 sq m
For identification only - Not to scale

Kinleigh Folkard & Hayward



Floor plan produced in accordance with RICS Property Measurement Standards incorporating International Property Measurement Standards (IPMS2 Residential). © n̄tchecom 2022. Produced for Kinleigh Folkard & Hayward. REF: 864368