



## Harvard Court, Honeybourne Road, London NW6 .| £925,000

- Stunning Mansions Apartment
- Three Double Bedrooms
- Two Bathrooms
- Private Balcony

- Communal Gardens
- Superb Location

"Vita Properties have been tremendously helpful throughout the process of securing/renting my flat. Informative about the property, prompt communication, easy to use dashboard for sharing of information, and pleasant to work with. Highly recommend!"

Stunning bright lateral three bedroom, two bathroom apartment placed on the second floor of this glorious redbrick mansion block, situated on one of West Hampstead's most desirable tree lined streets. The apartment comprises of: Large modern kitchen, fantastic size reception room with large bay window, Two fully tiled bathrooms. Further benefits includes, balcony along with access to communal gardens. Harvard Court is perfectly situated to West Hampstead & Finchley Road Stations (Jubilee Line) whilst also being moments away from the fashionable high street boutique's, restaurants and amenities.

Share Of Freehold



Malcolm Ornstein

✉ malcolm.ornstein@vitaproperties.uk

☎ +4479 5647 8618



🏠 Flat  
🔑 Share of Freehold  
🛏 x 3  
🚿 x 1  
🚽 x 2

SCAN FOR  
A VIDEO  
WALKTHROUGH



"I was very impressed with Vita and their network of buyers. When the sale of my flat fell through (twice) they worked extremely hard to find new buyers in a difficult market - thank you!"

---



"Working with Vita properties has been a smooth experience! No complaints at all. Our letting agent, Diana has been fantastic and very helpful throughout the whole process. I would highly recommend both Vita properties and Diana."

---



"I used Vita properties to find a flat recently and it was an overall professional, personalised and positive experience. Saira went the extra mile to accommodate to our needs and quick to help us whenever possible."

---

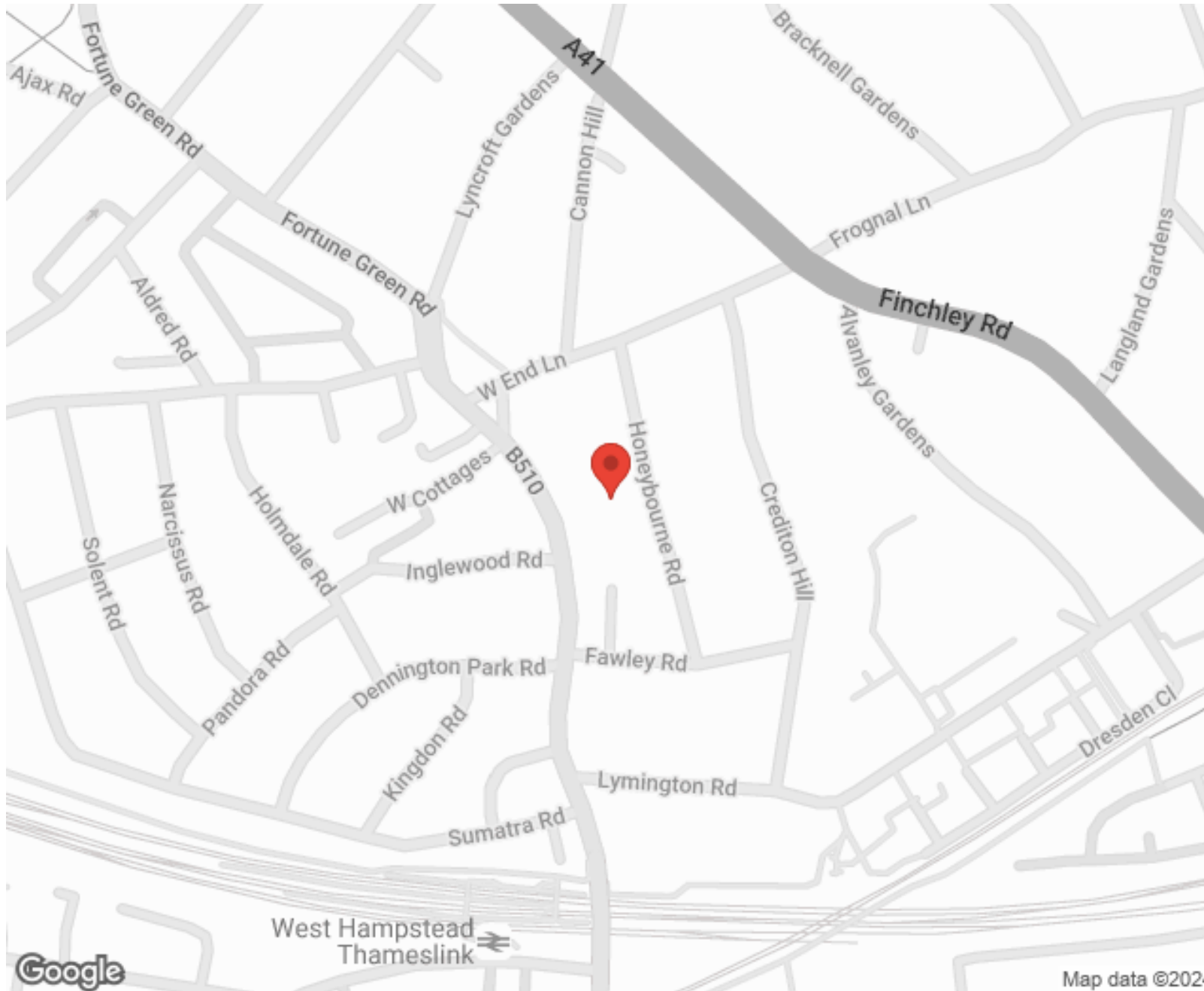


**MORE INFO, PICTURES,  
CONTACT ON  
OUR WEBSITE**



"Vita Properties is a very professional agency. My experience with them was incredible and the entire team was very helpful and kind throughout the renting process. I'd highly recommend!"

---



SCAN FOR MORE  
GOOGLE REVIEWS




Google



4.9 Stars | 132 Reviews

Find us on social media

 vitaproperties

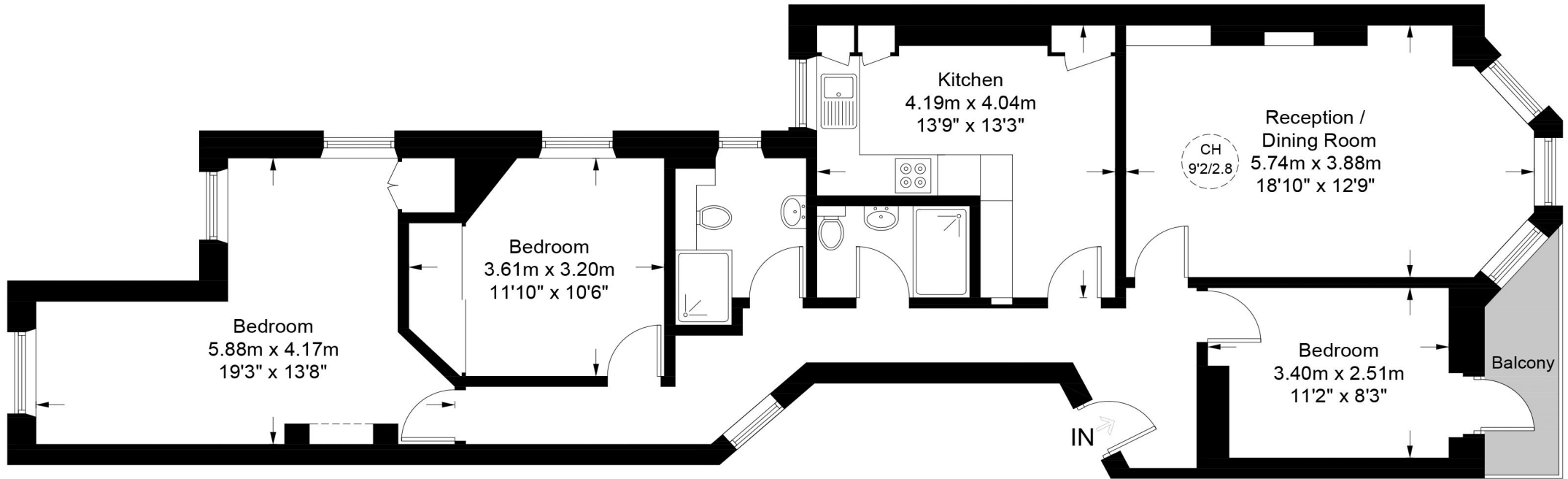
 VitaProperties

 VitaProperties



# Harvard Court, NW6

Approximate Gross Internal Area = 1013 sq ft / 94.1 sq m



**Second Floor**



**Certified  
Property  
Measurer**

This plan is for layout guidance only. Not drawn to scale unless stated. Windows and door openings are approximate. Whilst every care is taken in the preparation of this plan, please check all dimensions, shapes and compass bearings before making any decisions reliant upon them. (ID912844)