



## Hanover Terrace, Regents Park, London NW1 .| £18,950,000

- Nash terrace family home
- Seconds from Regents Park and Marylebone
- Modern with retained character
- Balcony
- Garden and separate mews house with garage and a 1 bedroom flat



"Vita Properties have been tremendously helpful throughout the process of securing/renting my flat. Informative about the property, prompt communication, easy to use dashboard for sharing of information, and pleasant to work with. Highly recommend!"

This five-bedroom Nash terrace family home is truly remarkable, offering a luxurious living experience across its five floors. The property showcases a stunning presentation and retains many period features while incorporating the latest security and home entertainment systems, which can be conveniently managed from an iPad. The house boasts four to five reception rooms, providing ample space for entertaining guests and hosting social gatherings. The rooms are thoughtfully designed and offer excellent living areas for various purposes. All five bedrooms in the house are spacious and feature exceptional storage and wardrobe space, ensuring ample room for belongings. Additionally, the house includes four bathrooms, three of which are en suite, further adding to the convenience and comfort of its occupants. For those seeking wellness amenities, the property offers a gym and sauna, providing an opportunity to maintain a healthy lifestyle without leaving the comfort of home. The inclusion of these facilities adds a touch of luxury and promotes overall well-being.

Moreover, the house includes a separate mews house complete with a garage

	House
	Freehold
	x 5
	x 5
	x 4

SCAN FOR  
A VIDEO  
WALKTHROUGH



Oliver Kent

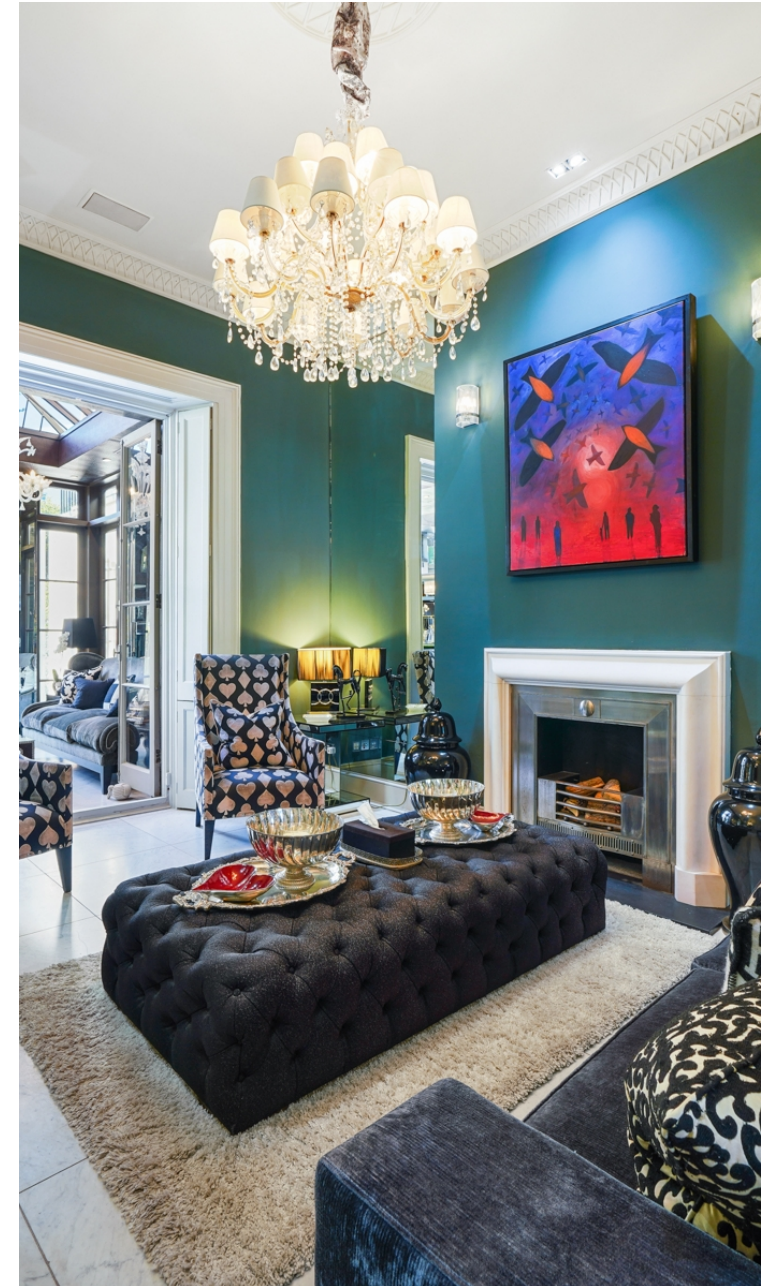
 [oliver.kent@vitaproperties.uk](mailto:oliver.kent@vitaproperties.uk)  
 +4477 7274 0351





"I was very impressed with Vita and their network of buyers. When the sale of my flat fell through (twice) they worked extremely hard to find new buyers in a difficult market - thank you!"

---





"Working with Vita properties has been a smooth experience! No complaints at all. Our letting agent, Diana has been fantastic and very helpful throughout the whole process. I would highly recommend both Vita properties and Diana."

---





"I used Vita properties to find a flat recently and it was an overall professional, personalised and positive experience. Saira went the extra mile to accommodate to our needs and quick to help us whenever possible."

---



MORE INFO, PICTURES,  
CONTACT ON  
OUR WEBSITE





"Vita Properties is a very professional agency. My experience with them was incredible and the entire team was very helpful and kind throughout the renting process. I'd highly recommend!"



Energy Efficiency Rating		Current	Potential
Very energy efficient - lower running costs			
(92-100)	<b>A</b>		
(81-91)	<b>B</b>		
(69-80)	<b>C</b>		79
(55-68)	<b>D</b>	62	
(39-54)	<b>E</b>		
(21-38)	<b>F</b>		
(1-20)	<b>G</b>		
Not energy efficient - higher running costs			
England, Scotland & Wales		EU Directive 2002/91/EC	

SCAN FOR MORE  
GOOGLE REVIEWS






Google



4.9 Stars | 132 Reviews

Find us on social media

-  vitaproperties
-  VitaProperties
-  VitaProperties





# Hanover Terrace Mews, NW1

Approximate Gross Internal Area = 426.5 sq m / 4591 sq ft



**Certified  
Property  
Measurer**

This plan is for layout guidance only. Not drawn to scale unless stated. Windows and door openings are approximate. Whilst every care is taken in the preparation of this plan, please check all dimensions, shapes and compass bearings before making any decisions reliant upon them. (ID898768)