



Blenheim Crescent, Notting Hill, London W11 . | £600

- Newly Refurbished
- One Bedroom
- Close to Ladbroke Grove Station
- Furnished

- Available for Immediate Occupation
- Perfect for a Single Person

"Vita Properties have been tremendously helpful throughout the process of securing/renting my flat. Informative about the property, prompt communication, easy to use dashboard for sharing of information, and pleasant to work with. Highly recommend!"

An exquisite, completely renovated one-bedroom residence nestled in the vibrant heart of Notting Hill. Meticulously crafted with top-tier interior design, this residence is primed for immediate occupancy. Brimming with natural light, it serves as an ideal abode for a single dweller seeking a harmonious living space.

This impeccably refurbished apartment is available for Immediate Occupation



Saira Ishfaq

✉ saira@vitaproperties.uk

☎ +4475 5575 4510



🏠	Flat
🔑	Under Negotiation
🛏️	x 1
🛋️	x 1
🚿	x 1



"I was very impressed with Vita and their network of buyers. When the sale of my flat fell through (twice) they worked extremely hard to find new buyers in a difficult market - thank you!"



"Working with Vita properties has been a smooth experience! No complaints at all. Our letting agent, Diana has been fantastic and very helpful throughout the whole process. I would highly recommend both Vita properties and Diana."



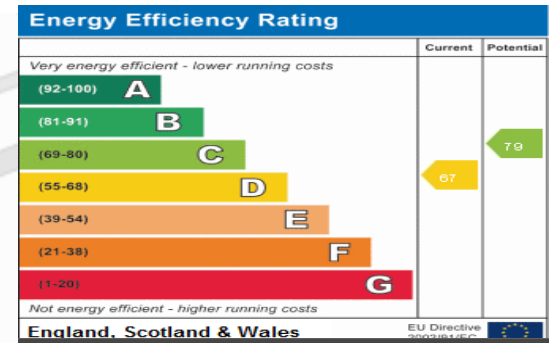
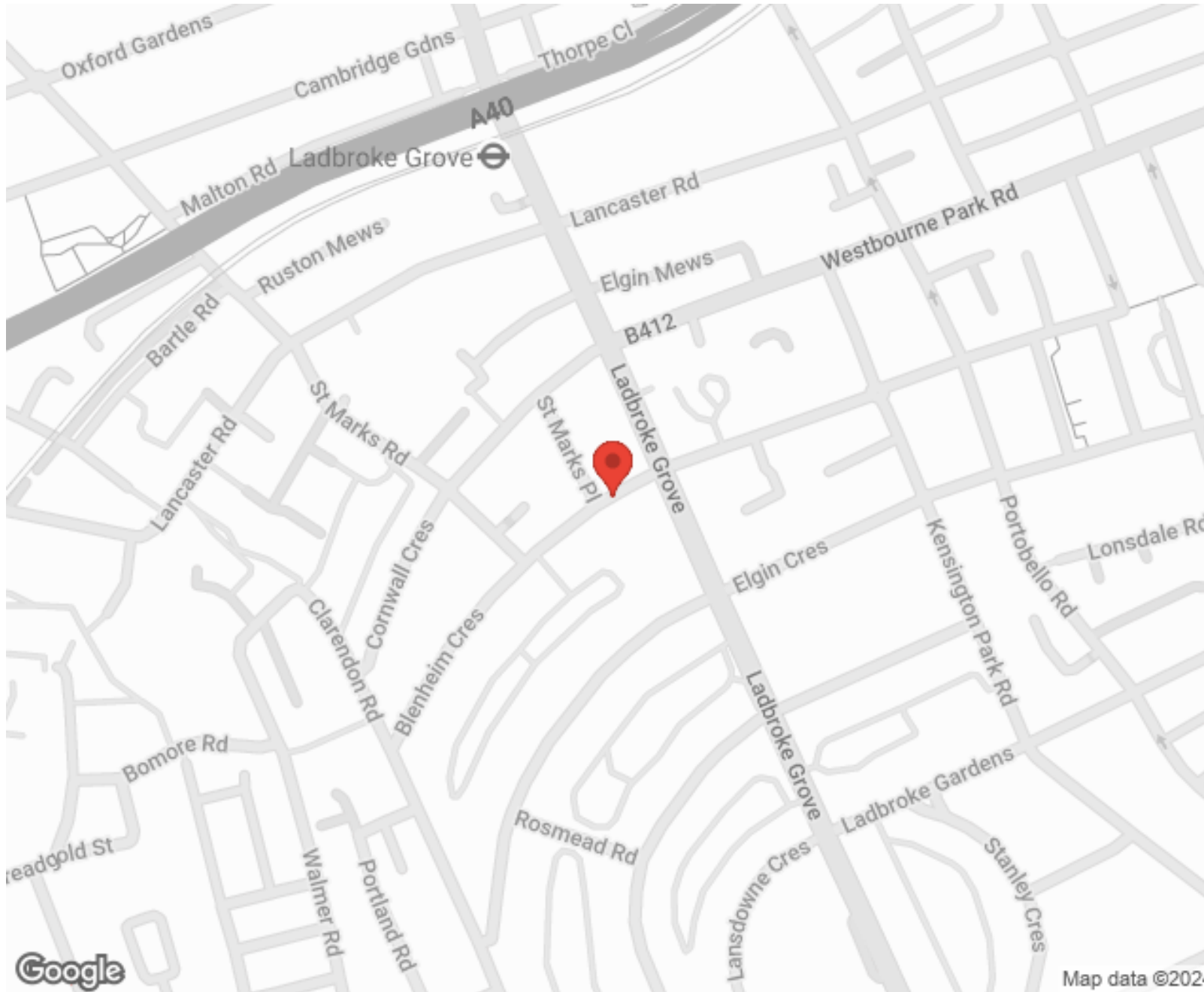
"I used Vita properties to find a flat recently and it was an overall professional, personalised and positive experience. Saira went the extra mile to accommodate to our needs and quick to help us whenever possible."



**MORE INFO, PICTURES,
CONTACT ON
OUR WEBSITE**



"Vita Properties is a very professional agency. My experience with them was incredible and the entire team was very helpful and kind throughout the renting process. I'd highly recommend!"



SCAN FOR MORE
GOOGLE REVIEWS



Google



4.9 Stars | 132 Reviews

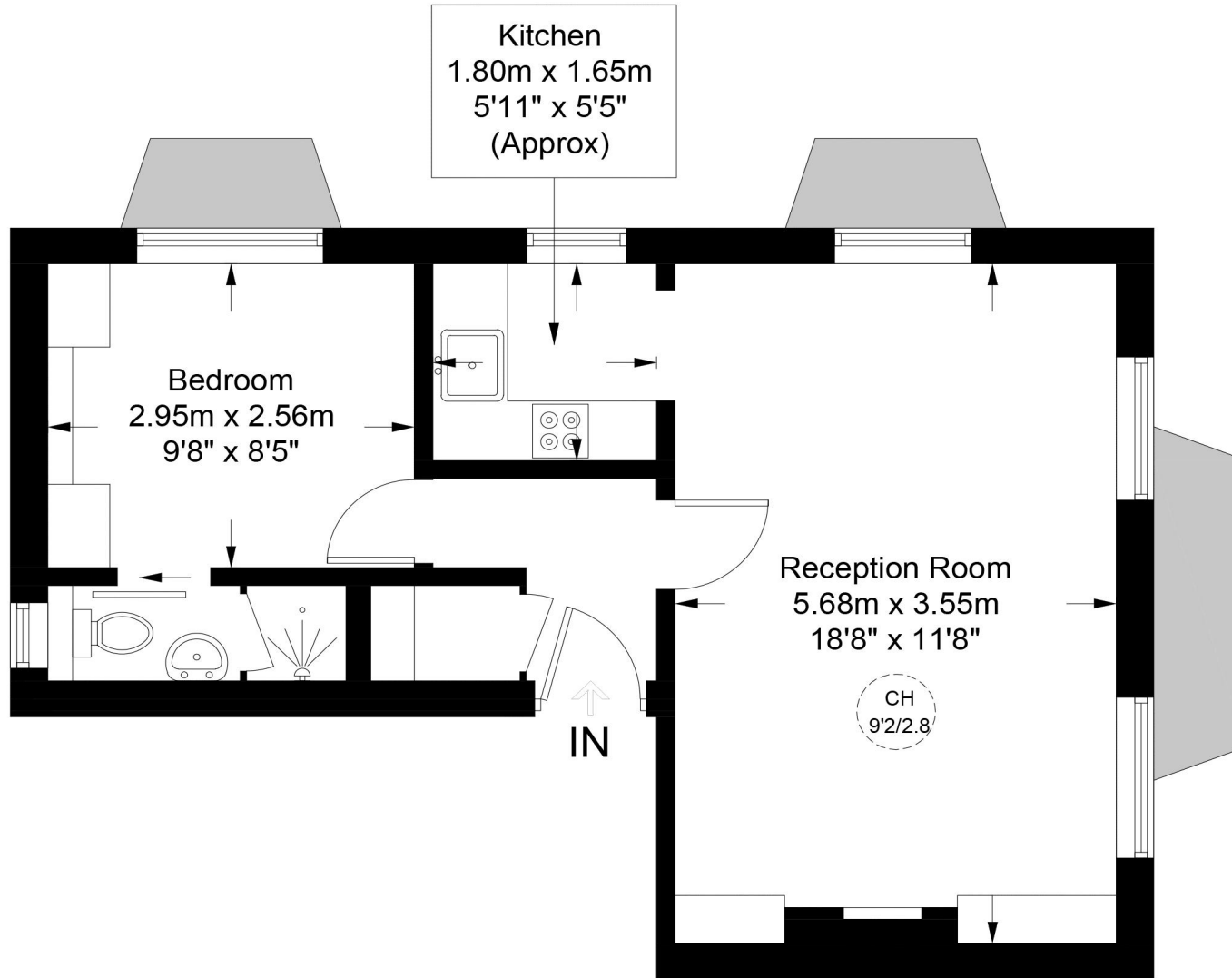
Find us on social media

-  vitaproperties
-  VitaProperties
-  VitaProperties



Blenheim Crescent, W11

Approximate Gross Internal Area = 409 sq ft / 38.0 sq m



Second Floor

This plan is for layout guidance only. Not drawn to scale unless stated. Windows and door openings are approximate. Whilst every care is taken in the preparation of this plan, please check all dimensions, shapes and compass bearings before making any decisions reliant upon them. (ID881321)



**Certified
Property
Measurer**