



Heath Drive, Hampstead, London NW3 .| £2,250

- Utility Room
- High Ceilings
- Large Rooms
- Moments to Hampstead Heath

- Close to Multiple Transport Links
- Available in August

"Vita Properties have been tremendously helpful throughout the process of securing/renting my flat. Informative about the property, prompt communication, easy to use dashboard for sharing of information, and pleasant to work with. Highly recommend!"

We are delighted to offer this beautifully modernised, 3 bedroom 3 bathroom apartment with parking and large garden with patio area. Meticulously designed with care and attention to every area. This impressive home is nestled within walking distance to Hampstead Heath and within a mile of Hampstead High Street. Transport links into central London are within walking distance, making a commute into town easily accessible. This truly is an amazing family home offering ample living space. Viewings of this property are strongly advised.

Offered Unfurnished and available in August



Oliver Kent

✉ [oliver.kent@vitaproperties.uk](mailto:oliver.kent@vitaproperties.uk)  
☎ +4477 7274 0351

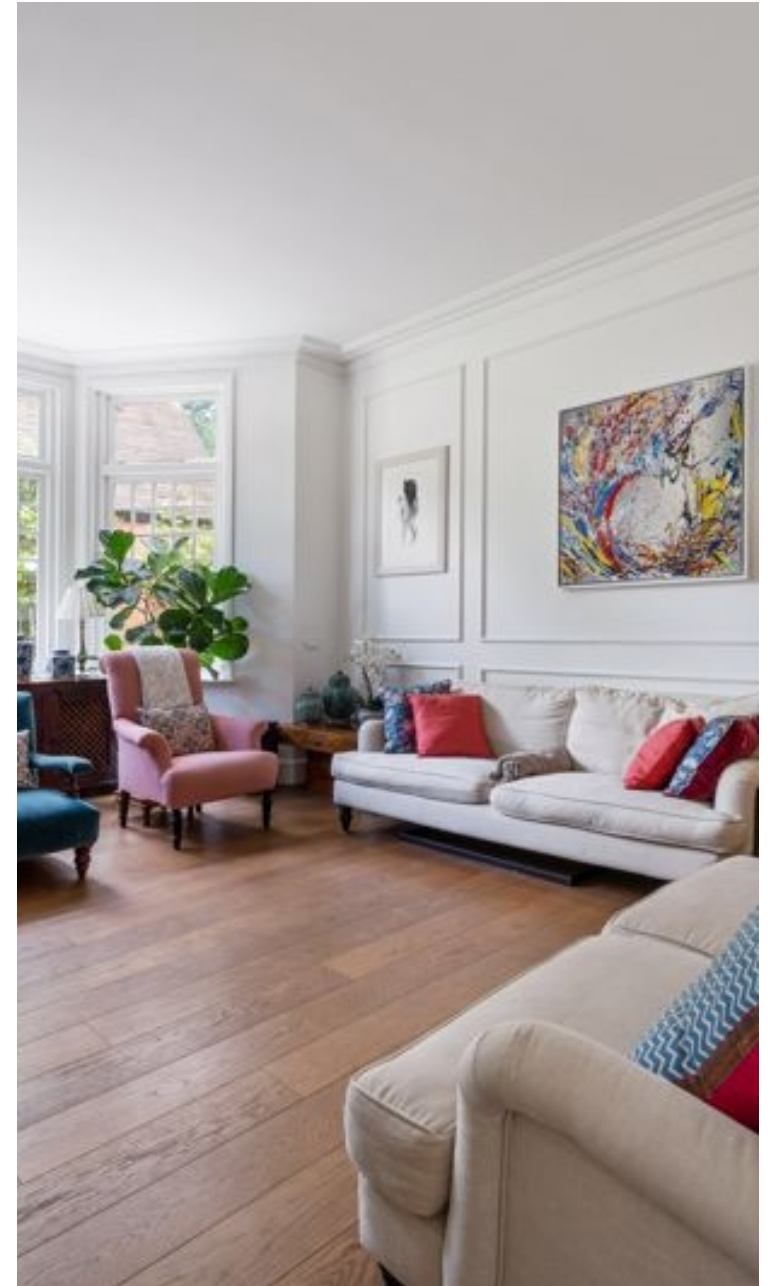


🏠 Flat  
🔑 Under  
Negotiation  
🛋️ x 3  
🛏️ x 1  
🚗 x 3

SCAN FOR  
A VIDEO  
WALKTHROUGH

"I was very impressed with Vita and their network of buyers. When the sale of my flat fell through (twice) they worked extremely hard to find new buyers in a difficult market - thank you!"

---



"Working with Vita properties has been a smooth experience! No complaints at all. Our letting agent, Diana has been fantastic and very helpful throughout the whole process. I would highly recommend both Vita properties and Diana."

---



"I used Vita properties to find a flat recently and it was an overall professional, personalised and positive experience. Saira went the extra mile to accommodate to our needs and quick to help us whenever possible."

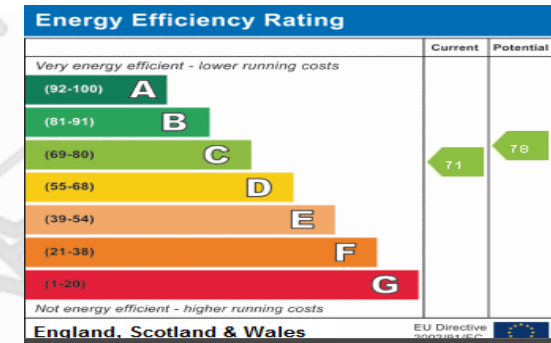
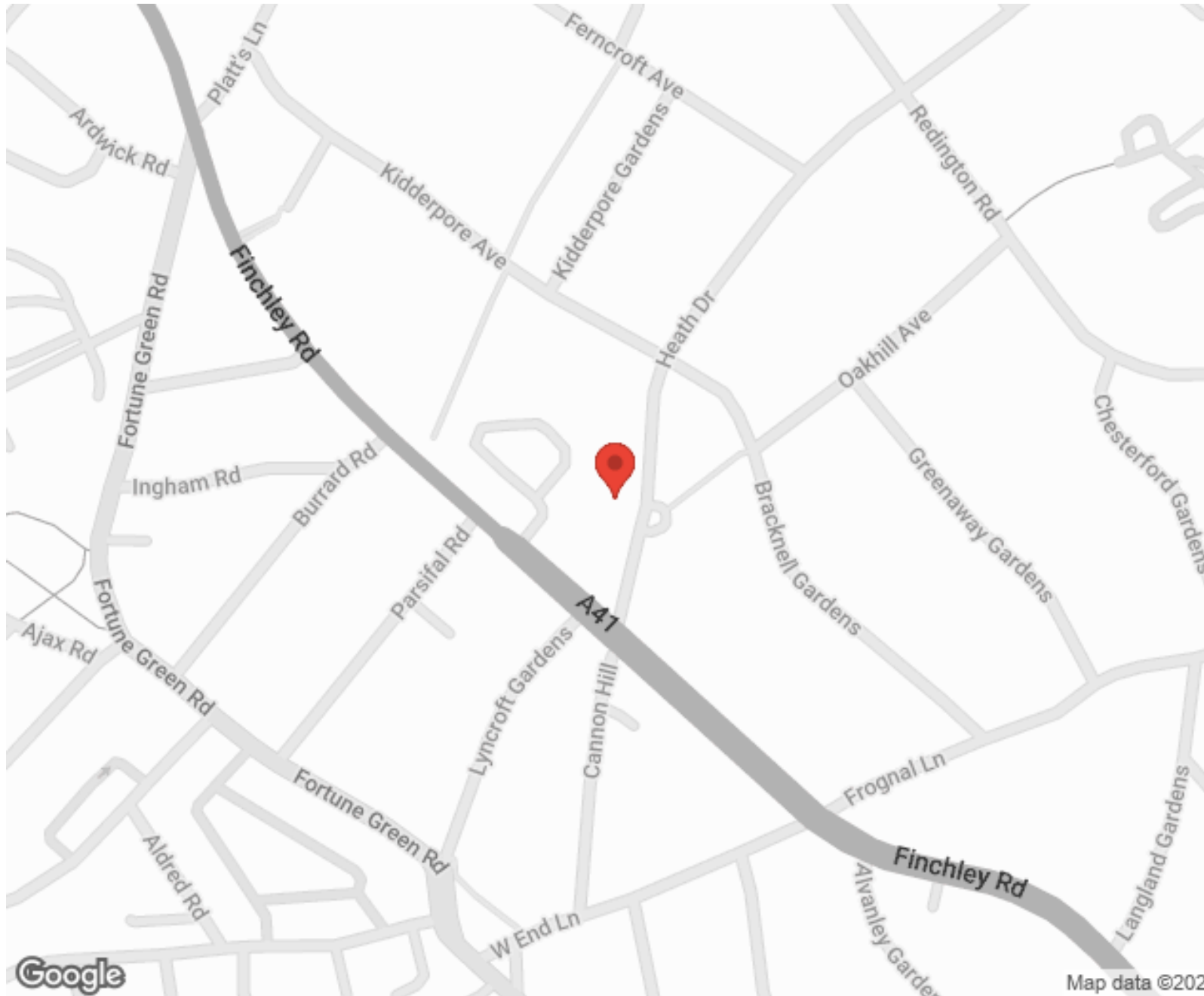
---



**MORE INFO, PICTURES,  
CONTACT ON  
OUR WEBSITE**



"Vita Properties is a very professional agency. My experience with them was incredible and the entire team was very helpful and kind throughout the renting process. I'd highly recommend!"



SCAN FOR MORE GOOGLE REVIEWS

Google  
★★★★★  
4.9 Stars | 132 Reviews

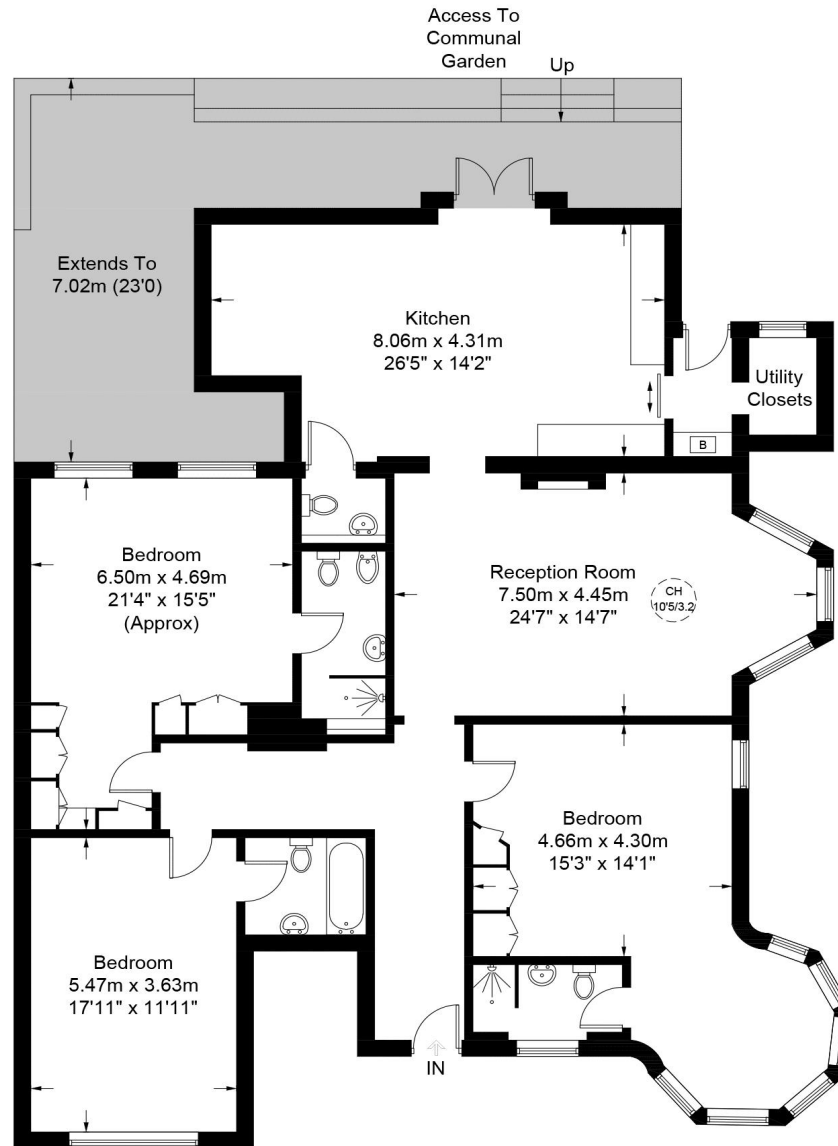
Find us on social media

- vitaproperties
- VitaProperties
- VitaProperties



# Heath Drive, NW3

Approximate Gross Internal Area = 1955 sq ft / 181.6 sq m



This plan is for layout guidance only. Not drawn to scale unless stated. Windows and door openings are approximate. Whilst every care is taken in the preparation of this plan, please check all dimensions, shapes and compass bearings before making any decisions reliant upon them. (ID868662)



**Certified  
Property  
Measurer**