



Woods Mews, Mayfair, London W1 .| £700

- Managed
- Modern
- Stunning Location
- Furnished

- Located moments from Hyde Park.
- Available 11 July 2022

"Vita Properties have been tremendously helpful throughout the process of securing/renting my flat. Informative about the property, prompt communication, easy to use dashboard for sharing of information, and pleasant to work with. Highly recommend!"

We are delighted to offer this larger than average one bedroom apartment on the second floor of this Mayfair mews house, conveniently located for Hyde Park and Bond Street tube stations. Offering a contemporary finish and benefitting from high ceilings and large windows.

Woods Mews is set in a quiet residential street located to the east of Hyde Park and to the north of Piccadilly. The house has unobstructed views over the hidden Green Street Gardens.



Oliver Kent

✉ [oliver.kent@vitaproperties.uk](mailto:oliver.kent@vitaproperties.uk)

☎ +4477 7274 0351



🏠	Flat
🔑	Available to Let
🛏️	x 1
🛋️	x 1
🪑	x 1



"I was very impressed with Vita and their network of buyers. When the sale of my flat fell through (twice) they worked extremely hard to find new buyers in a difficult market - thank you!"

---



"Working with Vita properties has been a smooth experience! No complaints at all. Our letting agent, Diana has been fantastic and very helpful throughout the whole process. I would highly recommend both Vita properties and Diana."

---



"I used Vita properties to find a flat recently and it was an overall professional, personalised and positive experience. Saira went the extra mile to accommodate to our needs and quick to help us whenever possible."

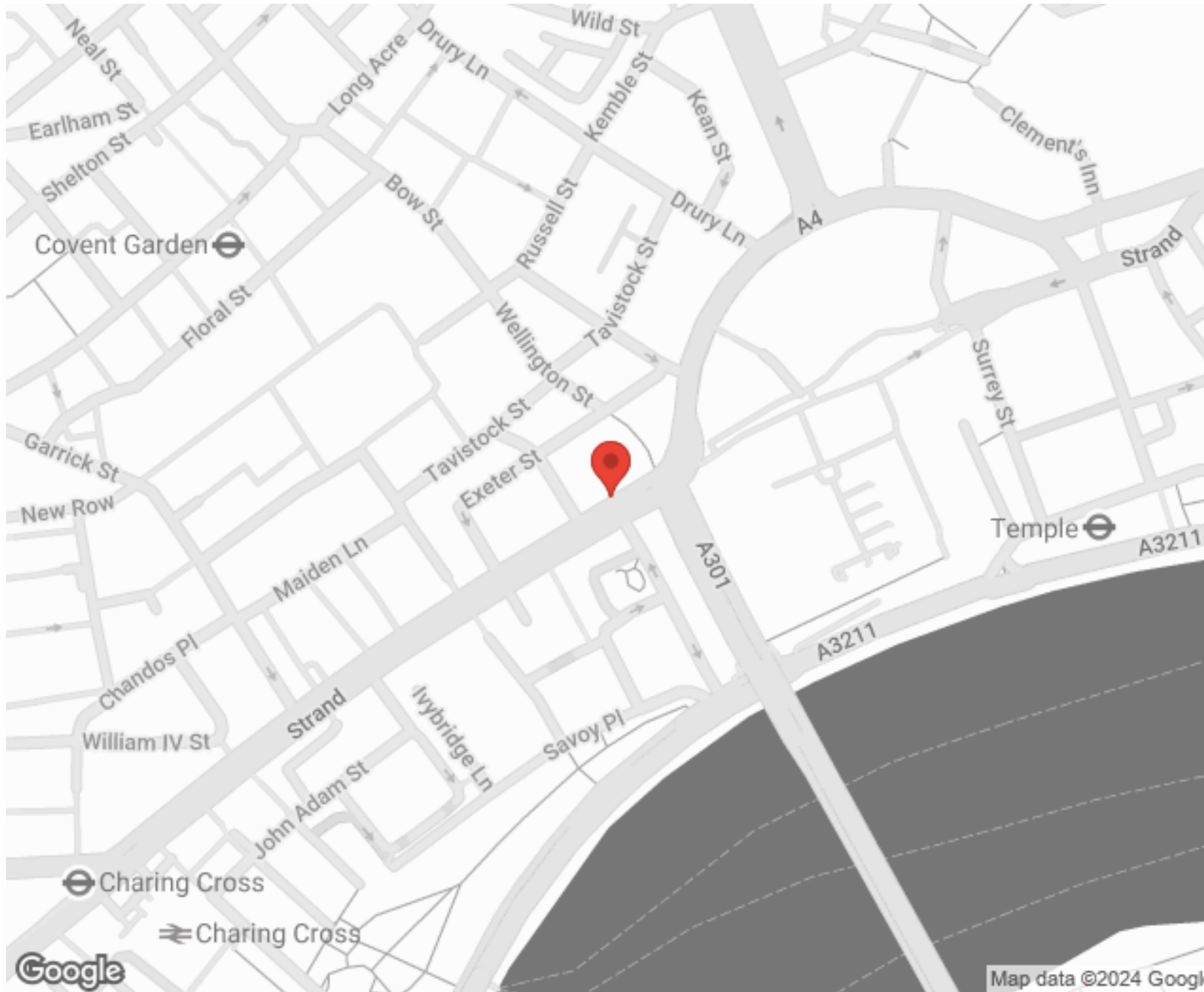
---



**MORE INFO, PICTURES,  
CONTACT ON  
OUR WEBSITE**



"Vita Properties is a very professional agency. My experience with them was incredible and the entire team was very helpful and kind throughout the renting process. I'd highly recommend!"



Energy Efficiency Rating		
	Current	Potential
Very energy efficient - lower running costs		
(92-100) <b>A</b>		
(81-91) <b>B</b>		
(69-80) <b>C</b>		
(55-68) <b>D</b>	69	73
(39-54) <b>E</b>		
(21-38) <b>F</b>		
(1-20) <b>G</b>		
Not energy efficient - higher running costs		
England, Scotland & Wales		
EU Directive 2002/91/EC		

SCAN FOR MORE  
GOOGLE REVIEWS



Google



4.9 Stars | 132 Reviews

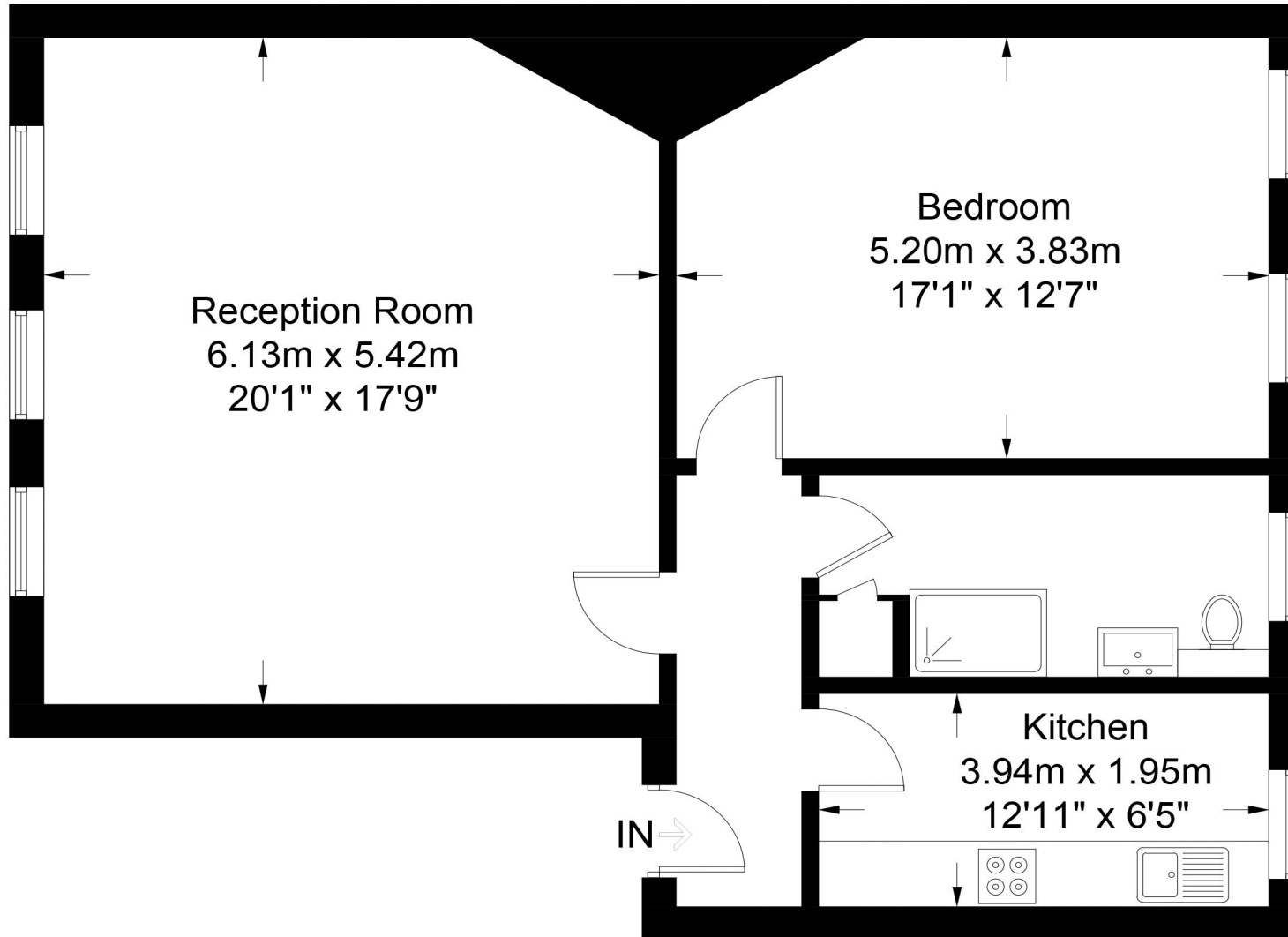
Find us on social media

-  vitaproperties
-  VitaProperties
-  VitaProperties



# Wood's Mews London

Approximate Gross Internal Area = 810 sq ft / 75.3 sq m



## Second Floor

This plan is for layout guidance only. Not drawn to scale unless stated. Windows and door openings are approximate. Whilst every care is taken in the preparation of this plan, please check all dimensions, shapes and compass bearings before making any decisions reliant upon them. (ID868487)



Certified  
Property  
Measurer