



## Lyndhurst Lodge, Hampstead, London, NW3 .| £2,500

- Very large 3 bedroom flat
- Large Terrace
- Large, well tended communal gardens
- Great views of London Skyline

- Newly Refurbished
- Pets allowed

"Vita Properties have been tremendously helpful throughout the process of securing/renting my flat. Informative about the property, prompt communication, easy to use dashboard for sharing of information, and pleasant to work with. Highly recommend!"

Available 8th April - A spacious three double bedroom, three bathroom apartment with terrace situated on the first floor of this grand period property and offering a delightful double reception room open to a fully fitted eat-in kitchen. This apartment benefits from many period features with high ceilings, feature fireplace, excellent built in storage throughout and plus use of communal garden and lift.

This property is ideally located on Lyndhurst Road, convenient for all the amenities of both Belsize Park and Hampstead Village and local transport facilities (Northern Line Tube & Jubilee Line Tube).



Oliver Kent

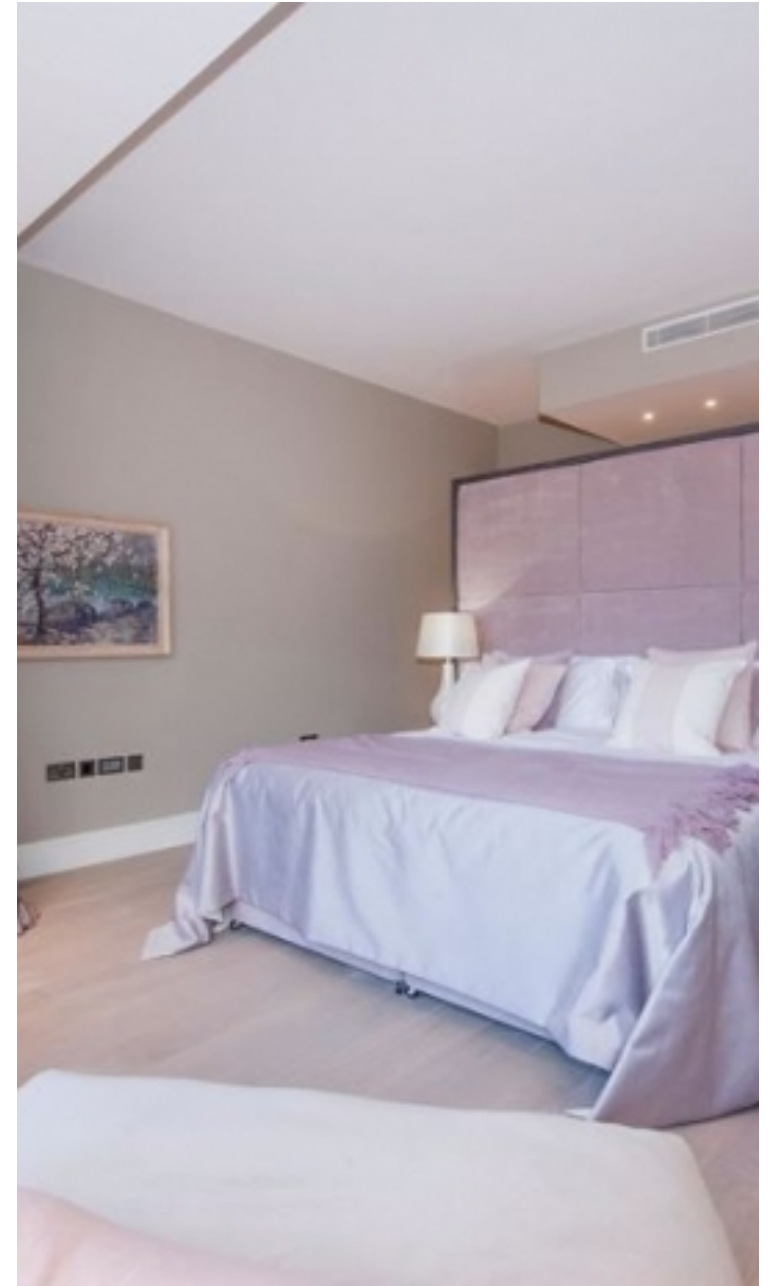
✉ [oliver.kent@vitaproperties.uk](mailto:oliver.kent@vitaproperties.uk)  
☎ +4477 7274 0351



🏠	Flat
🔑	Available to Let
🛏️	x 3
🛋️	x 1
🚿	x 3

"I was very impressed with Vita and their network of buyers. When the sale of my flat fell through (twice) they worked extremely hard to find new buyers in a difficult market - thank you!"

---



"Working with Vita properties has been a smooth experience! No complaints at all. Our letting agent, Diana has been fantastic and very helpful throughout the whole process. I would highly recommend both Vita properties and Diana."

---



"I used Vita properties to find a flat recently and it was an overall professional, personalised and positive experience. Saira went the extra mile to accommodate to our needs and quick to help us whenever possible."

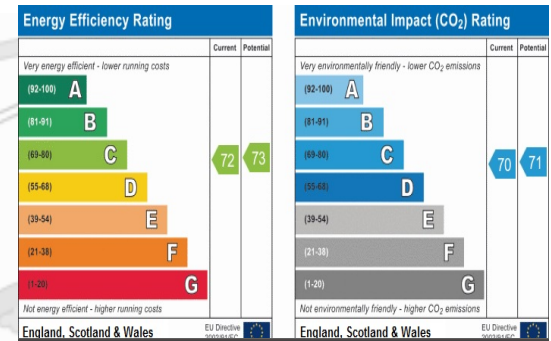
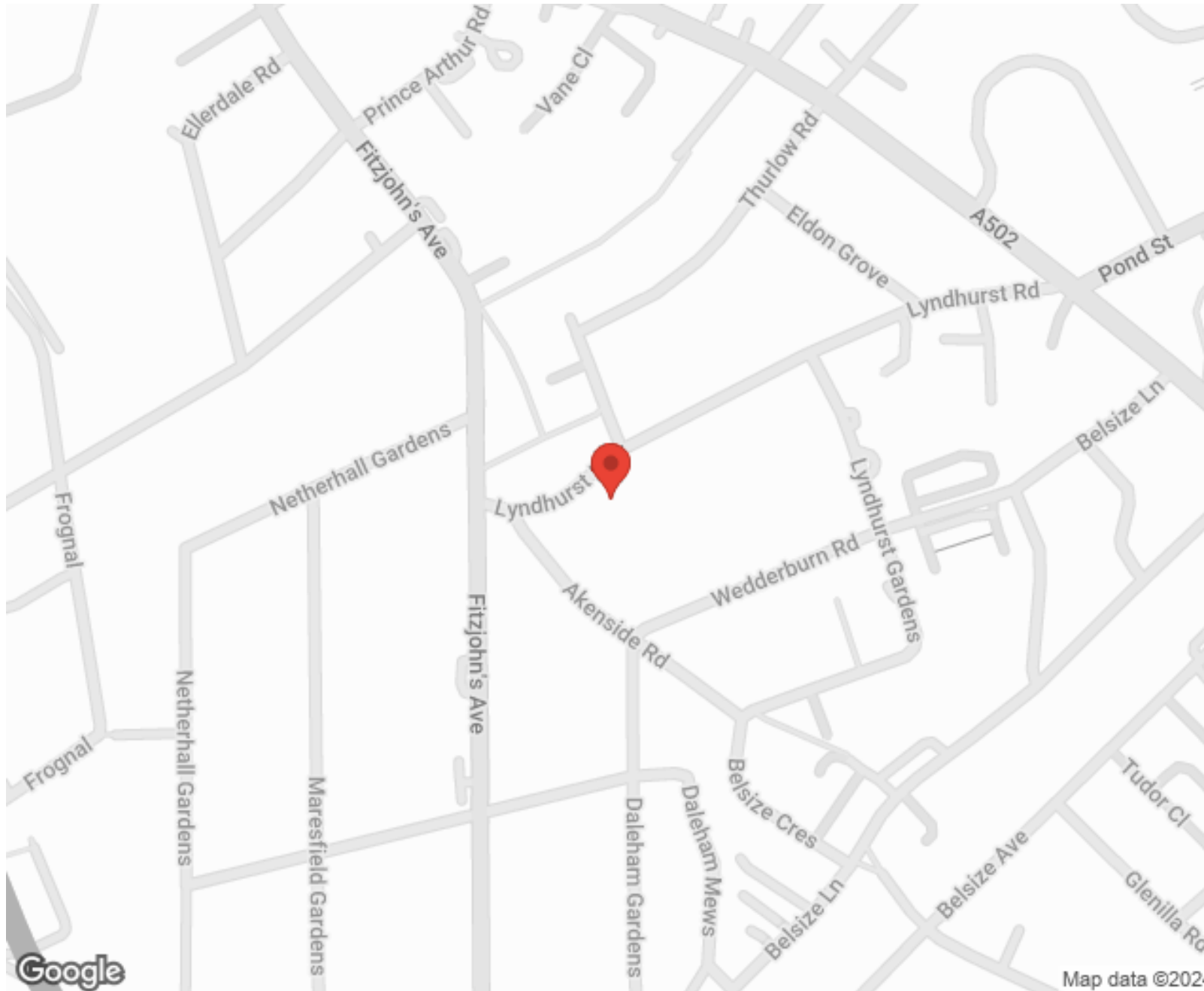
---



**MORE INFO, PICTURES,  
CONTACT ON  
OUR WEBSITE**



"Vita Properties is a very professional agency. My experience with them was incredible and the entire team was very helpful and kind throughout the renting process. I'd highly recommend!"



SCAN FOR MORE  
GOOGLE REVIEWS






Google

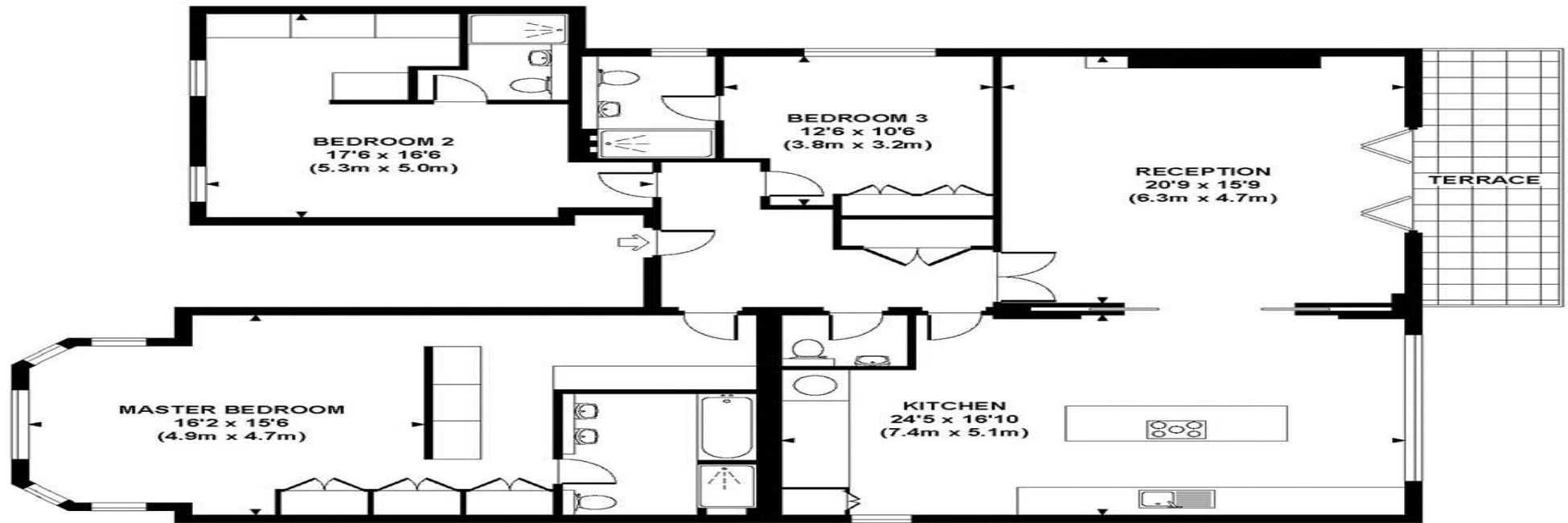


4.9 Stars | 132 Reviews

Find us on social media

-  vitaproperties
-  VitaProperties
-  VitaProperties

**FLAT D LYNDHURST ROAD, NW3**  
Approximate Gross Internal Area 1785 sq ft / 165.8 sq m



**FIRST FLOOR**  
**GROSS INTERNAL**  
**FLOOR AREA 1785 SQ FT**

Although every attempt has been made to ensure accuracy, all measurements are approximate. The floor plan's for illustrative purposes only and not to scale. Measured in accordance to RICS standards. DE-PHOTOGRAPHY.NET