



Elgin Avenue, Maida Vale, London W9 .| £725,000

- Modern Open-Plan Kitchen with Integrated Appliances
- Minutes from Maida Vale and Westbourne Park Station
- 832 square feet.
- Long Lease

- A Stones Throw From Paddington Recreation Ground
- Chain Free

"Vita Properties have been tremendously helpful throughout the process of securing/renting my flat. Informative about the property, prompt communication, easy to use dashboard for sharing of information, and pleasant to work with. Highly recommend!"

Delighted to offer this beautiful two bedroom, two bathroom apartment situated within a brand new development featuring fresh, elegant interiors with a high-spec finish throughout and a brilliant Maida Vale location. 12 Elgin Avenue is a four storey building which sits on a circa 0.18 acre site offering a luxury residential scheme of 15 apartments comprising of one, two and three beds. The apartment boasts 832 square feet.

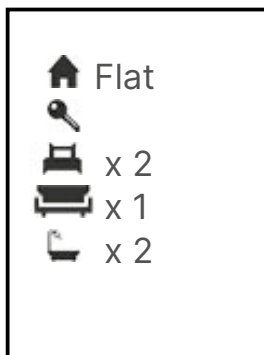
The property is located a stones throw from Westbourne Park and Maida Vale underground stations for easy commute to the city. The open green area of Paddington Recreation Ground are also moments away.

In the local area of the West End, there is great restaurants, shops and parks



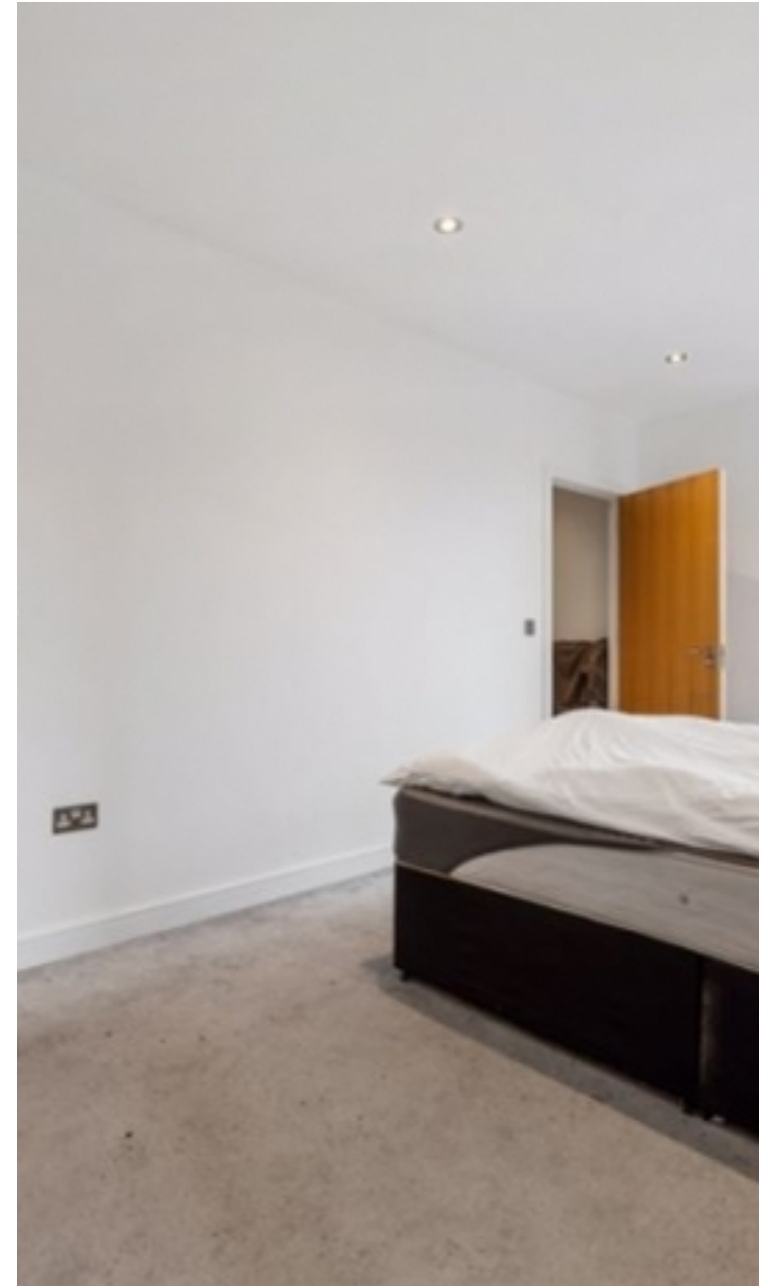
Oliver Kent

✉ [oliver.kent@vitaproperties.uk](mailto:oliver.kent@vitaproperties.uk)  
☎ +4477 7274 0351



"I was very impressed with Vita and their network of buyers. When the sale of my flat fell through (twice) they worked extremely hard to find new buyers in a difficult market - thank you!"

---



"Working with Vita properties has been a smooth experience! No complaints at all. Our letting agent, Diana has been fantastic and very helpful throughout the whole process. I would highly recommend both Vita properties and Diana."

---





"I used Vita properties to find a flat recently and it was an overall professional, personalised and positive experience. Saira went the extra mile to accommodate to our needs and quick to help us whenever possible."

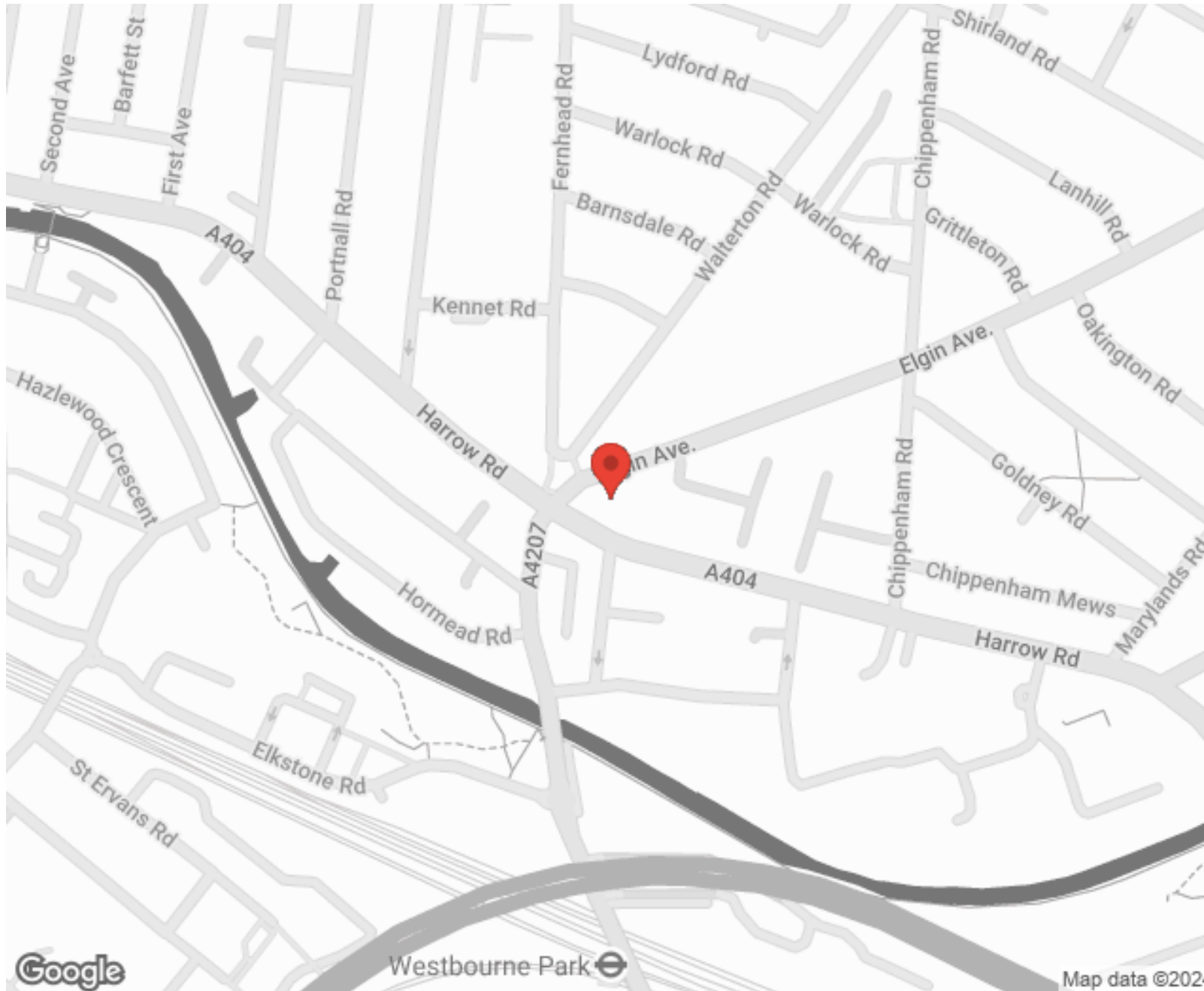
---



**MORE INFO, PICTURES,  
CONTACT ON  
OUR WEBSITE**



"Vita Properties is a very professional agency. My experience with them was incredible and the entire team was very helpful and kind throughout the renting process. I'd highly recommend!"



SCAN FOR MORE  
GOOGLE REVIEWS






Google



4.9 Stars | 132 Reviews

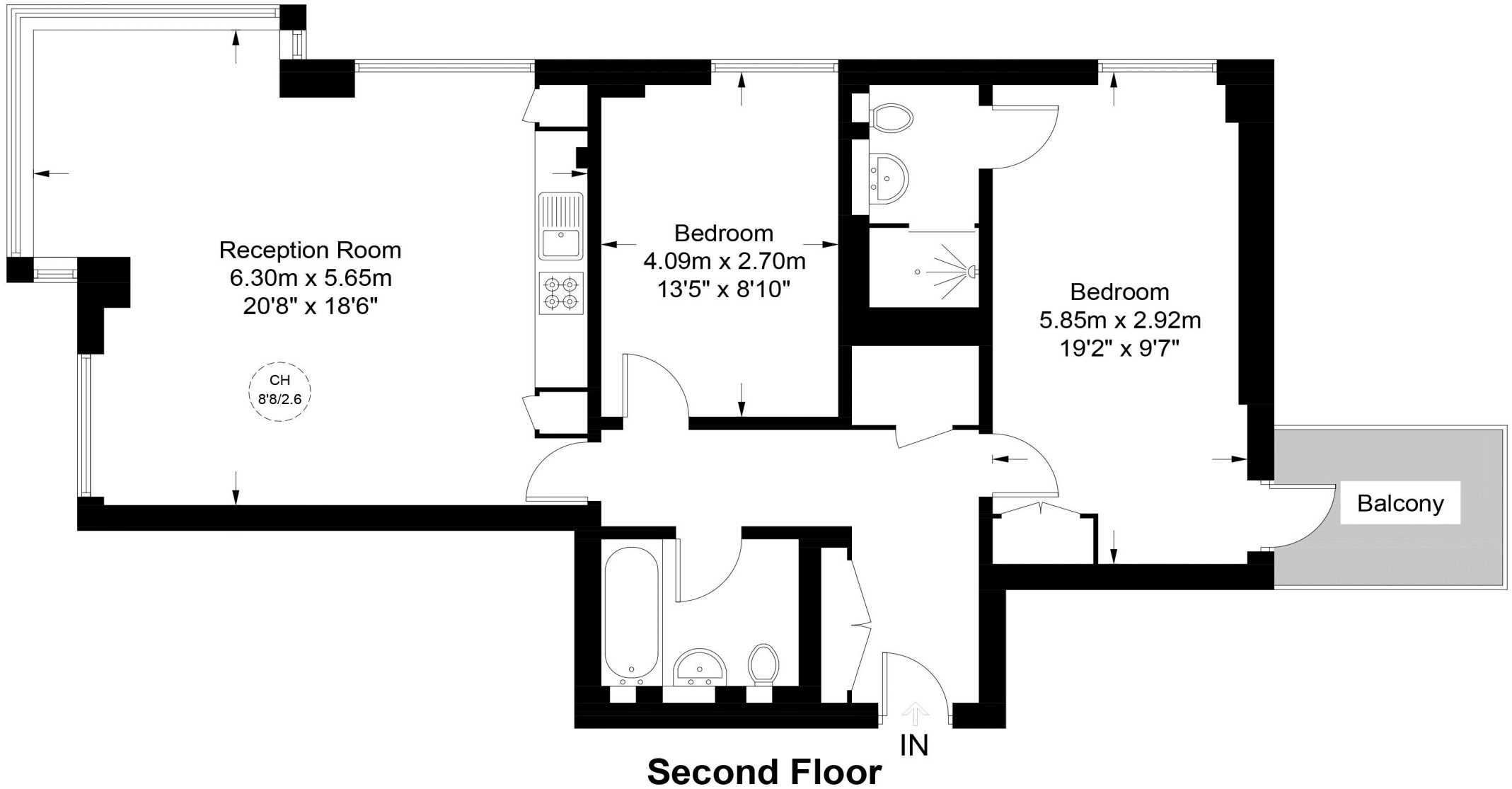
Find us on social media

-  vitaproperties
-  VitaProperties
-  VitaProperties



# Moray Apartments, W9

Approximate Gross Internal Area = 879 sq ft / 81.7 sq m



This plan is for layout guidance only. Not drawn to scale unless stated. Windows and door openings are approximate. Whilst every care is taken in the preparation of this plan, please check all dimensions, shapes and compass bearings before making any decisions reliant upon them. (ID838418)