



Loudoun Road, St Johns Wood, London, NW8 .| £1,150

- Modern
- Parking
- Garden
- Moments from the American School

- Wooden Floors
- 1504 Sq Ft
- Available immediately

"Vita Properties have been tremendously helpful throughout the process of securing/renting my flat. Informative about the property, prompt communication, easy to use dashboard for sharing of information, and pleasant to work with. Highly recommend!"

A contemporary recently refurbished low built town house well situated within walking distance to the American School and the amenities of Swiss Cottage and St John's Wood. The property, which benefits from off-street parking and a rear garden, comprises three double bedrooms, three bathrooms; guest WC, reception room, family room/bedroom 4, fully fitted kitchen/breakfast room.

Available immediately



Oliver Kent

✉ oliver.kent@vitaproperties.uk

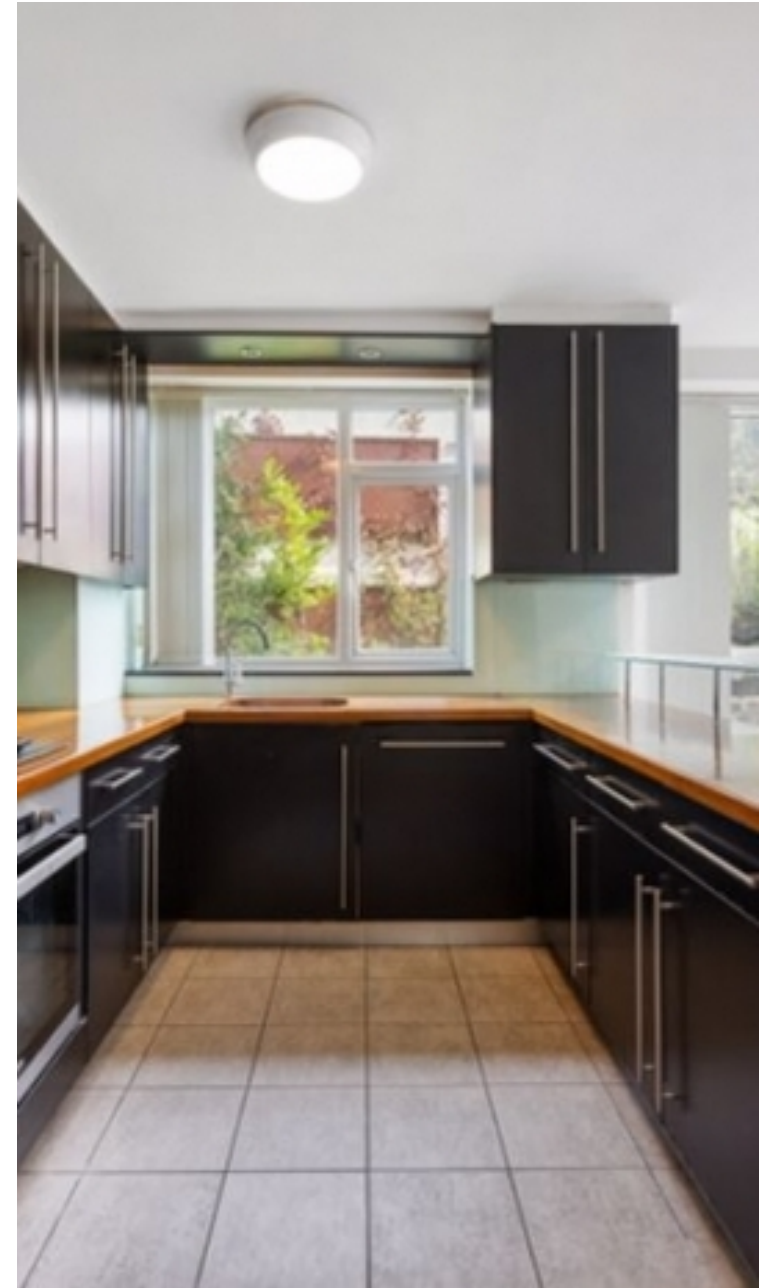
☎ +4477 7274 0351



🏠	House
🔑	Available to Let
🛏️	x 4
🛋️	x 2
🚿	x 3



"I was very impressed with Vita and their network of buyers. When the sale of my flat fell through (twice) they worked extremely hard to find new buyers in a difficult market - thank you!"



"Working with Vita properties has been a smooth experience! No complaints at all. Our letting agent, Diana has been fantastic and very helpful throughout the whole process. I would highly recommend both Vita properties and Diana."



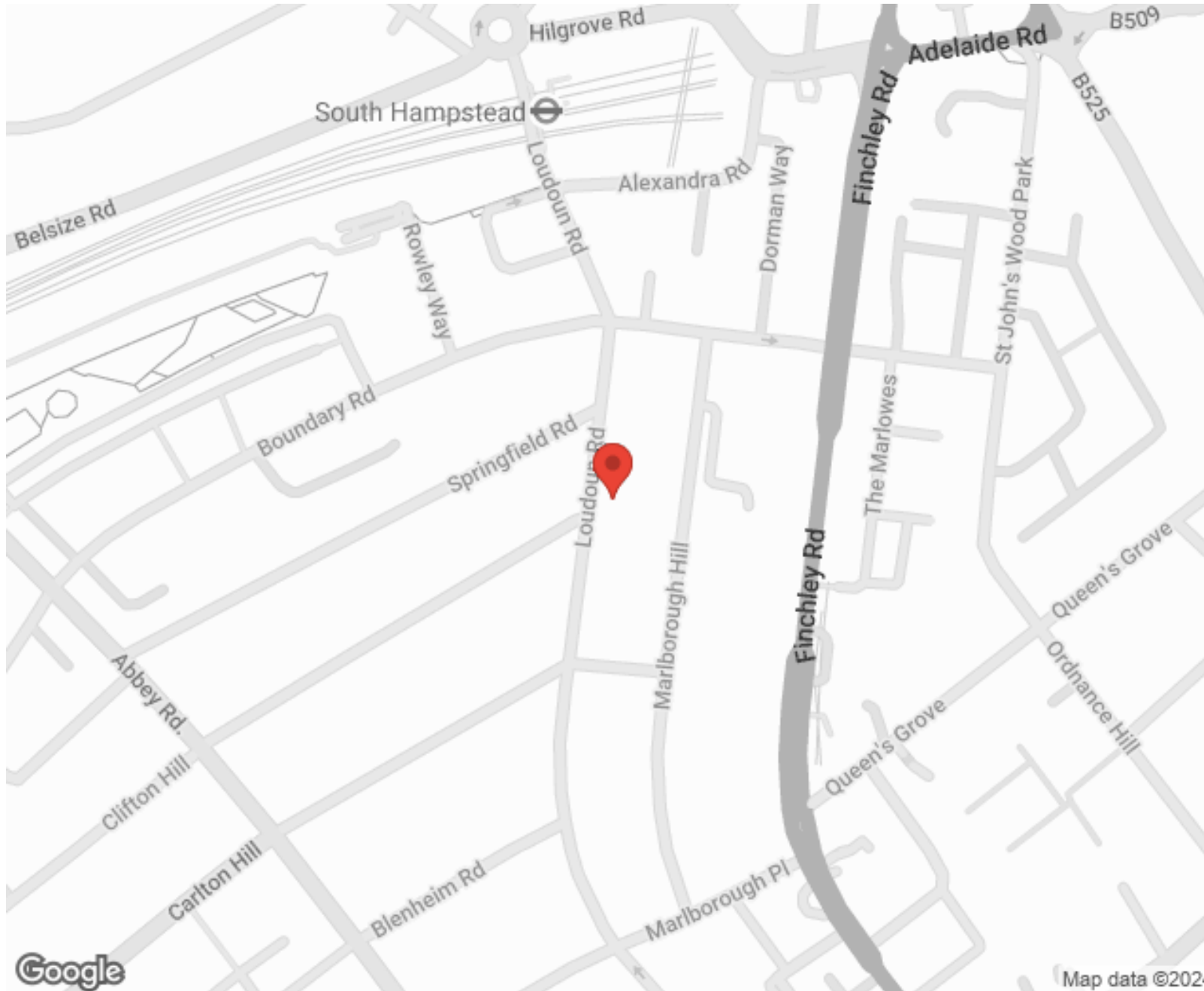
"I used Vita properties to find a flat recently and it was an overall professional, personalised and positive experience. Saira went the extra mile to accommodate to our needs and quick to help us whenever possible."



**MORE INFO, PICTURES,
CONTACT ON
OUR WEBSITE**



"Vita Properties is a very professional agency. My experience with them was incredible and the entire team was very helpful and kind throughout the renting process. I'd highly recommend!"



SCAN FOR MORE
GOOGLE REVIEWS



Google



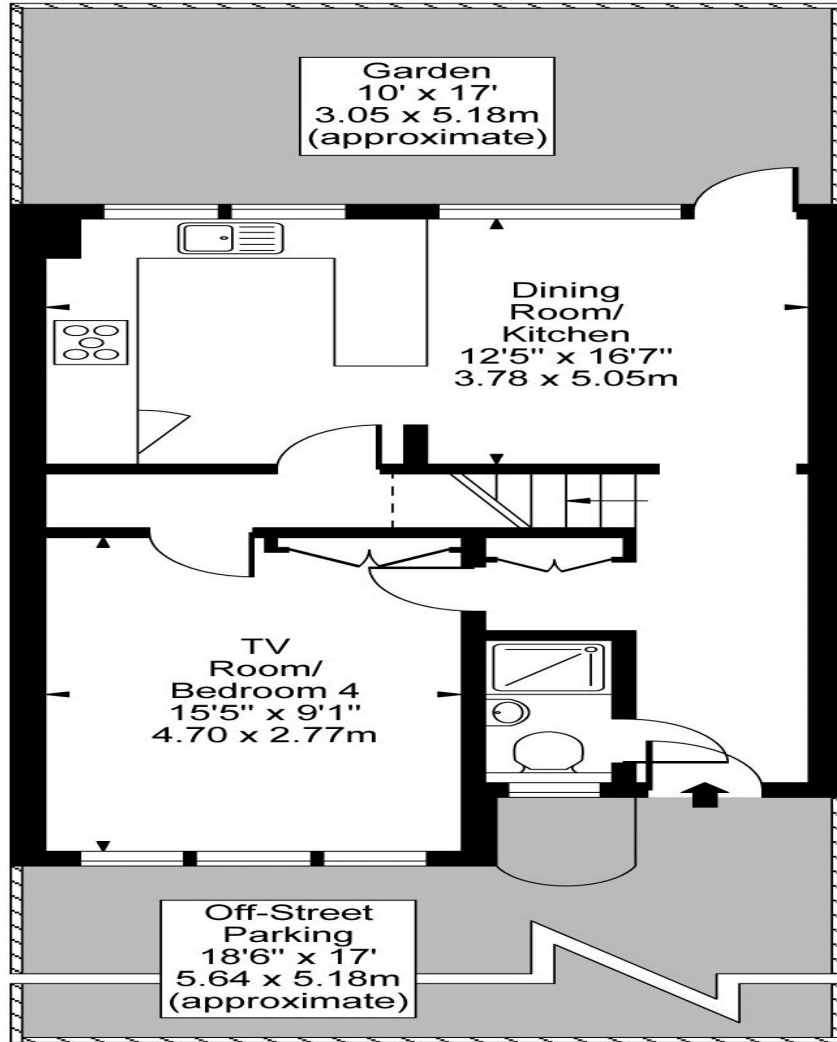
4.9 Stars | 132 Reviews

Find us on social media

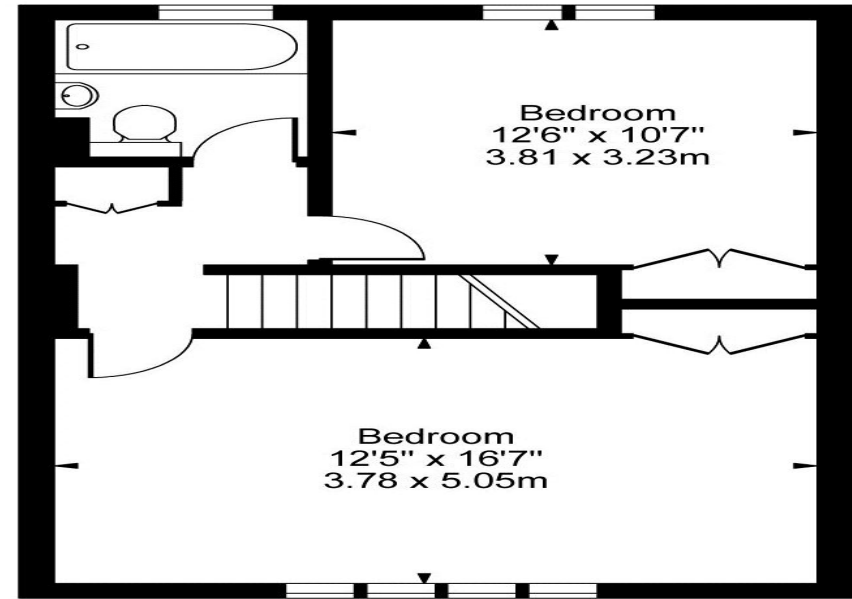
 vitaproperties

 VitaProperties

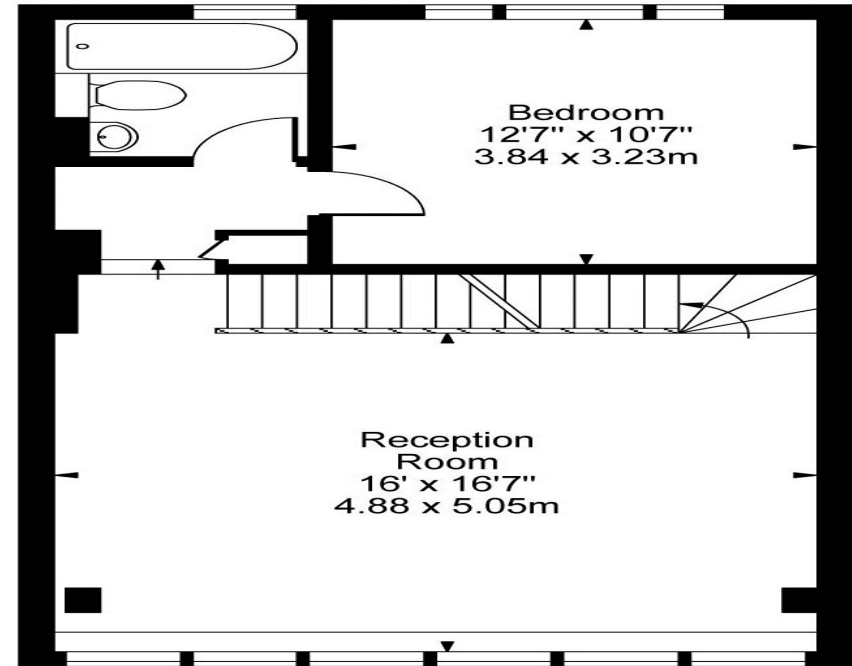
 VitaProperties



Ground Floor



Second Floor



First Floor

Approx Gross Internal Area **1504 Sq Ft - 139.72 Sq M**