



Greville Road, London NW6 .| £950,000

- Tenure: Leasehold
- 24-Hour Porterage
- Beautifully Refurbished
- Chain Free

"Vita Properties have been tremendously helpful throughout the process of securing/renting my flat. Informative about the property, prompt communication, easy to use dashboard for sharing of information, and pleasant to work with. Highly recommend!"

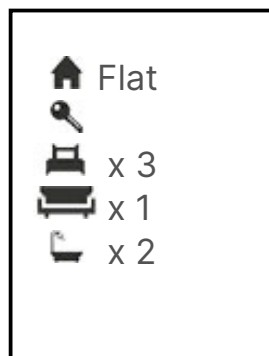
A wonderful opportunity to purchase this newly refurbished three bedroom first floor apartment located in this extremely popular purpose built block.

The accommodation comprises of large reception room with open plan kitchen, three double bedrooms and two bathrooms (one en-suite). Added benefits include 24 hour concierge, lifts, communal gardens and secure underground parking. The Underground and Overground are moments away, giving direct access to some of London's popular destinations, from Regents Park, Marylebone, Oxford Street, Hyde Park, Lords Cricket Ground, and the world-famous Abbey Studios.

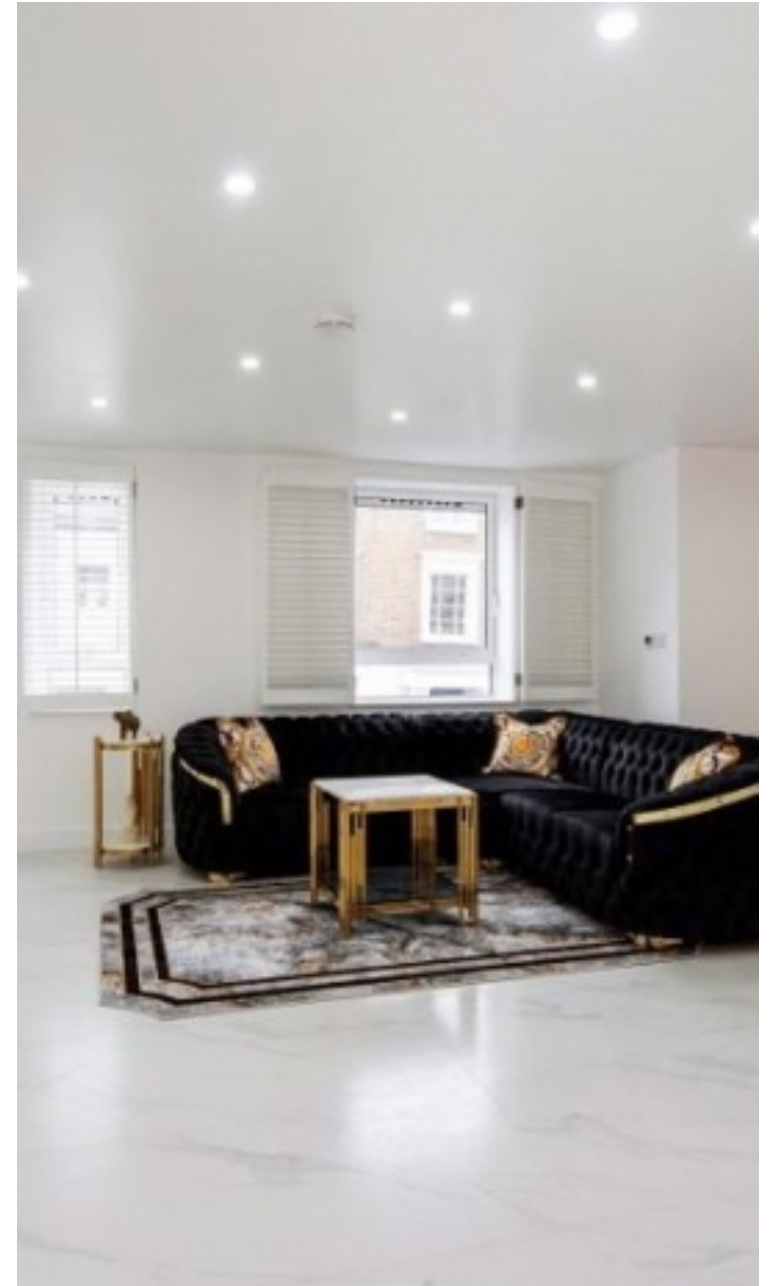


Oliver Kent

✉ oliver.kent@vitaproperties.uk
☎ +4477 7274 0351



"I was very impressed with Vita and their network of buyers. When the sale of my flat fell through (twice) they worked extremely hard to find new buyers in a difficult market - thank you!"



"Working with Vita properties has been a smooth experience! No complaints at all. Our letting agent, Diana has been fantastic and very helpful throughout the whole process. I would highly recommend both Vita properties and Diana."



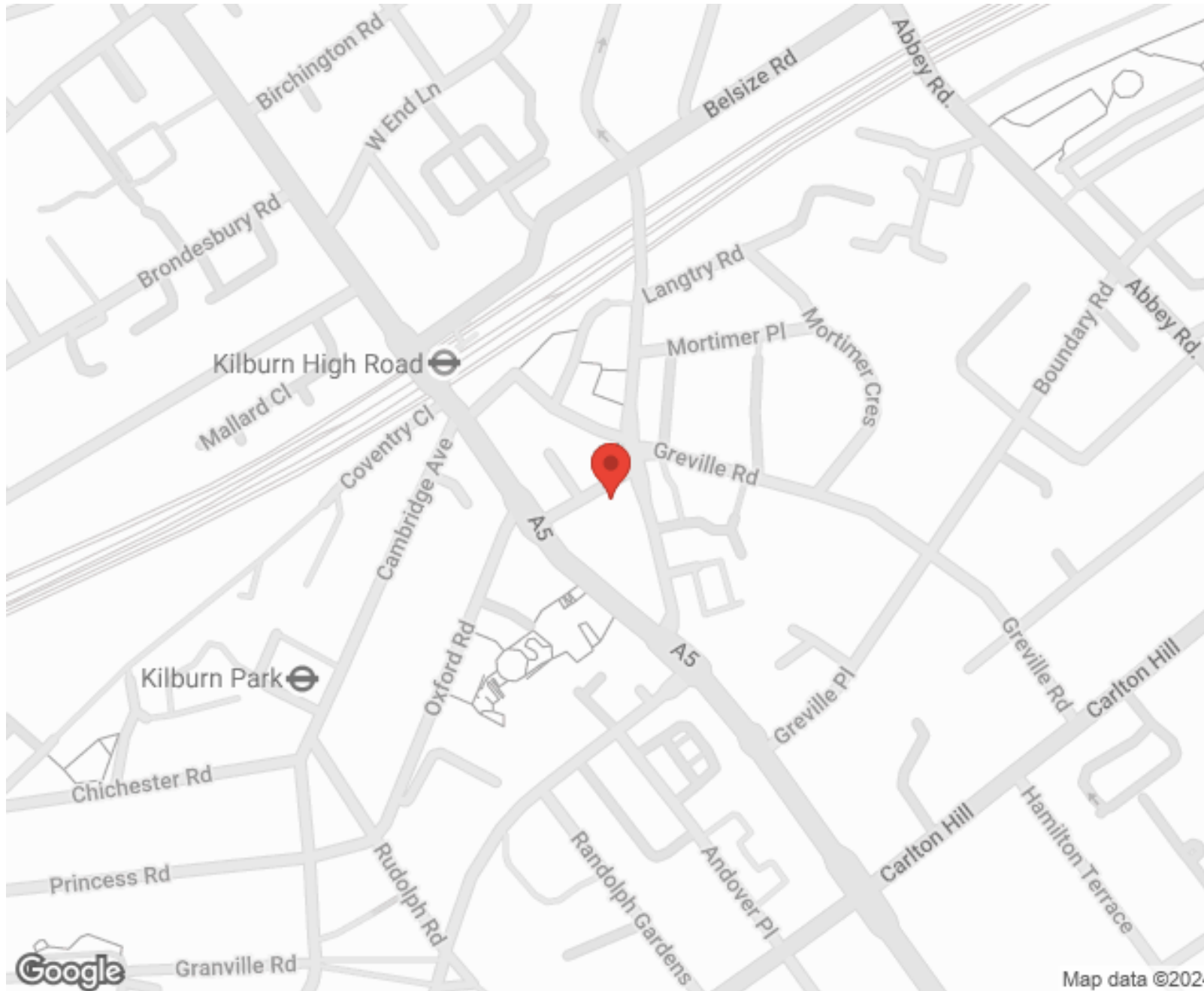
"I used Vita properties to find a flat recently and it was an overall professional, personalised and positive experience. Saira went the extra mile to accommodate to our needs and quick to help us whenever possible."



**MORE INFO, PICTURES,
CONTACT ON
OUR WEBSITE**



"Vita Properties is a very professional agency. My experience with them was incredible and the entire team was very helpful and kind throughout the renting process. I'd highly recommend!"



SCAN FOR MORE
GOOGLE REVIEWS




Google




4.9 Stars | 132 Reviews

Find us on social media

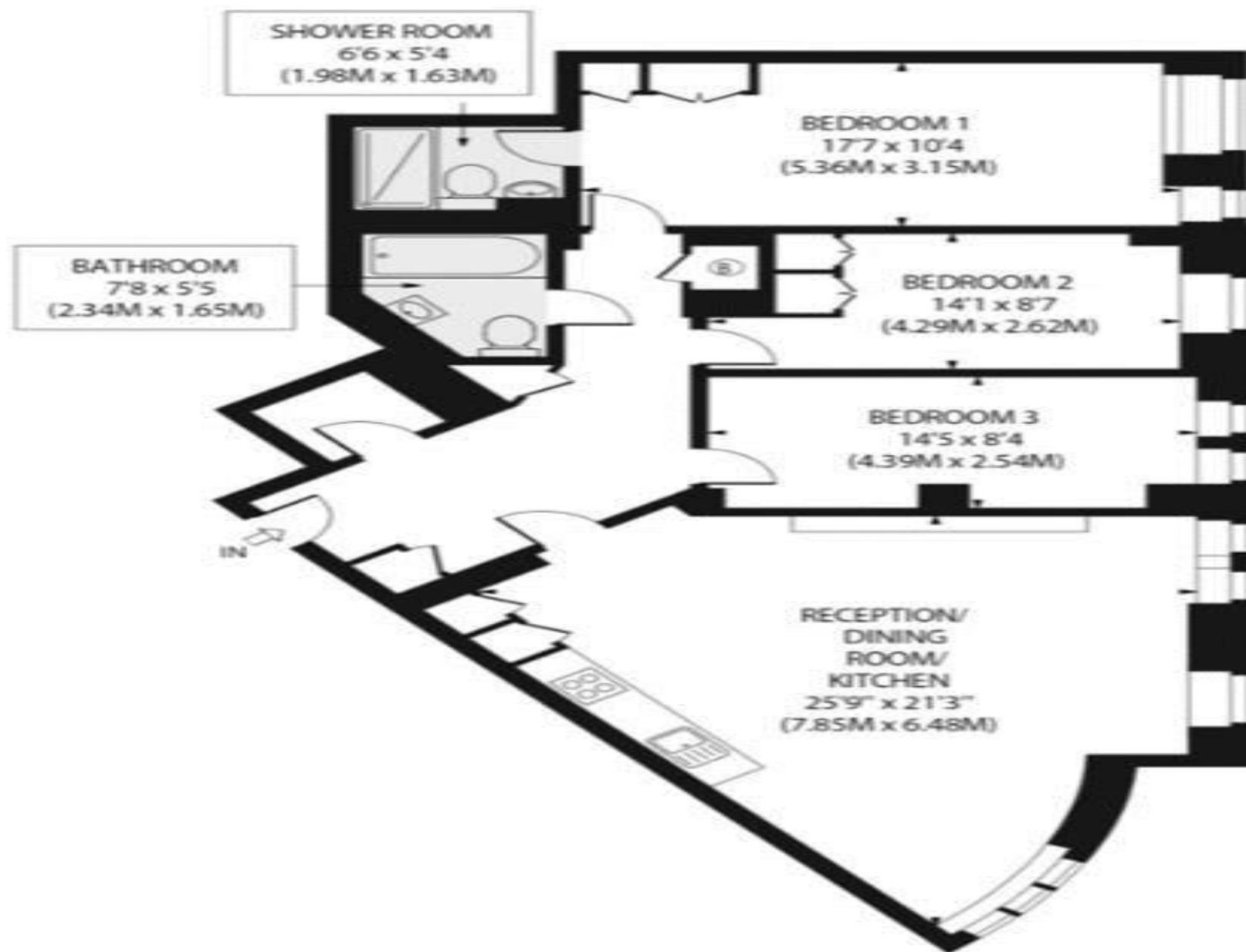
 vitaproperties

 VitaProperties

 VitaProperties

REGENTS PLAZA APARTMENTS, GREVILLE ROAD, NW6 5HU

Approx. Gross Internal Floor Area 1079 sq ft. / 100 sq.m



FIRST FLOOR