



Buckland Crescent, Belsize Park, London NW3 .| £575

- Two Bed, Two Bath
- Newly Refurbished
- Fantastic Transport Links
- Bright & Modern

- First Floor
- Available 03 March 2022

"Vita Properties have been tremendously helpful throughout the process of securing/renting my flat. Informative about the property, prompt communication, easy to use dashboard for sharing of information, and pleasant to work with. Highly recommend!"

A newly refurbished first floor, two bed apartment set within the beautiful Belsize Park, NW3.

This sleek apartment comprises of an open-plan kitchen and living space containing sophisticated black and white kitchen units, fully fitted appliances, glossy granite worktops and a large double window which floods the space with natural light. The sandy wood floors run throughout the property, including in the double bedrooms which both boast not only built in wardrobes, but their own private en-suites, which is a rare luxury.

This bright and spacious two bed can be found on the quaint tree-lined street of Buckland Crescent and conveniently placed for local transport links from Swiss Cottage Station (Jubilee line), being merely seconds away! Belsize Park Tube (Northern Line) is a short walk away and the space between is filled with an abundance of convenience stores, boutique shops, bars and restaurants.

-  Flat
-  Under Negotiation
-  x 2
-  x 1
-  x 2



Oliver Kent

 oliver.kent@vitaproperties.uk

 +4477 7274 0351



"I was very impressed with Vita and their network of buyers. When the sale of my flat fell through (twice) they worked extremely hard to find new buyers in a difficult market - thank you!"



"Working with Vita properties has been a smooth experience! No complaints at all. Our letting agent, Diana has been fantastic and very helpful throughout the whole process. I would highly recommend both Vita properties and Diana."



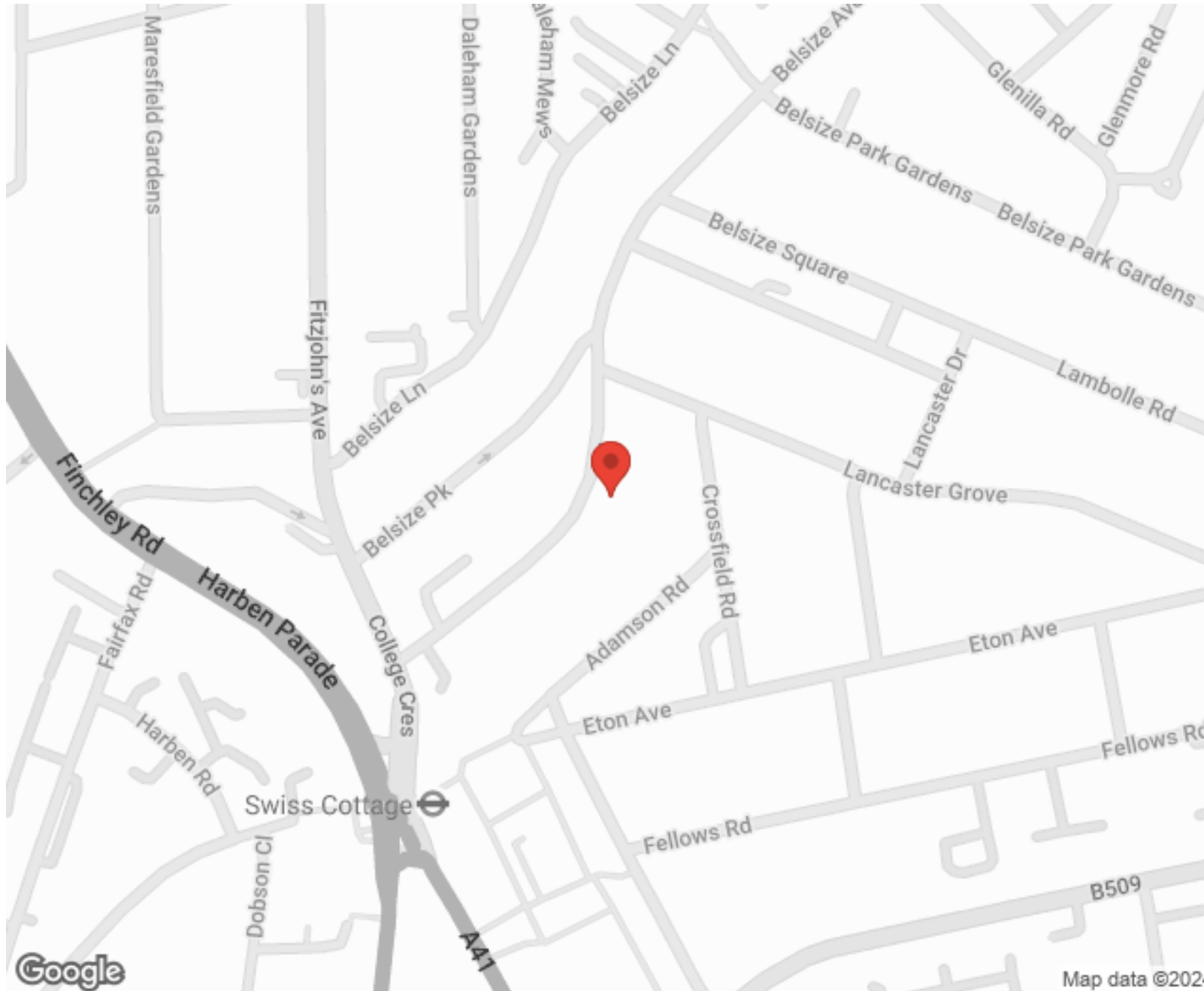
"I used Vita properties to find a flat recently and it was an overall professional, personalised and positive experience. Saira went the extra mile to accommodate to our needs and quick to help us whenever possible."



**MORE INFO, PICTURES,
CONTACT ON
OUR WEBSITE**



"Vita Properties is a very professional agency. My experience with them was incredible and the entire team was very helpful and kind throughout the renting process. I'd highly recommend!"



SCAN FOR MORE
GOOGLE REVIEWS






Google



4.9 Stars | 132 Reviews

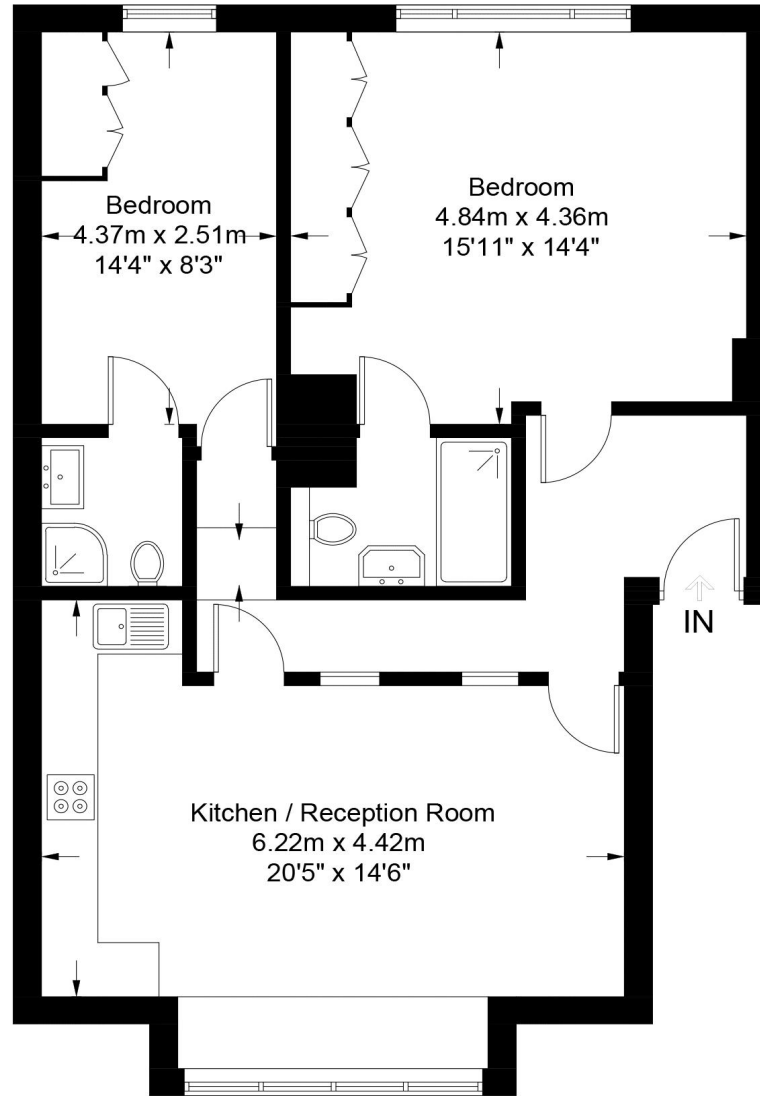
Find us on social media

-  vitaproperties
-  VitaProperties
-  VitaProperties



Buckland Crescent, NW3

Approximate Gross Internal Area = 801 sq ft / 74.4 sq m



First Floor

This plan is for layout guidance only. Not drawn to scale unless stated. Windows and door openings are approximate. Whilst every care is taken in the preparation of this plan, please check all dimensions, shapes and compass bearings before making any decisions reliant upon them. (ID676888)