



Chatsworth Road, Mapesbury, London, NW2 .| £2,750,000

- Spacious Three bedroom first floor flat with a terrace
- Moments to Willesden Green tube
- Parking
- Annual rent £98,800 - Gross yield - 3.71% pa
- Great investment!

"Vita Properties have been tremendously helpful throughout the process of securing/renting my flat. Informative about the property, prompt communication, easy to use dashboard for sharing of information, and pleasant to work with. Highly recommend!"

We are delighted to offer this great opportunity to purchase a freehold consisting of 4 newly-refurbished flats. For further information, please get in touch with our Sales department. Annual rent 98,800 - Gross yield - 3.71

Set on a picturesque tree-lined street and enviably located just moments from Willesden Green station (Jubilee Line) along with excellent connections for the overground.








Oliver Kent

✉ oliver.kent@vitaproperties.uk

☎ +4477 7274 0351

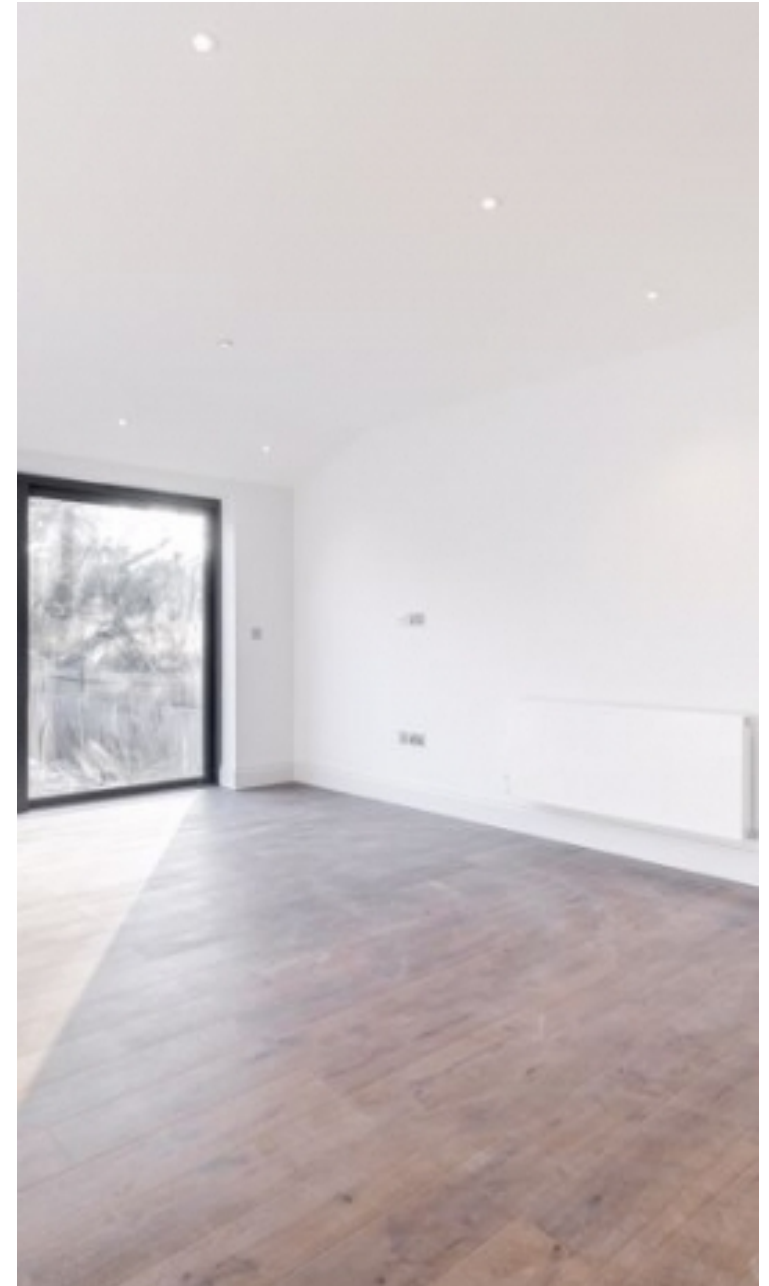


	House
	
	x 5+
	x 4
	x 5+

SCAN FOR
A VIDEO
WALKTHROUGH



"I was very impressed with Vita and their network of buyers. When the sale of my flat fell through (twice) they worked extremely hard to find new buyers in a difficult market - thank you!"



"Working with Vita properties has been a smooth experience! No complaints at all. Our letting agent, Diana has been fantastic and very helpful throughout the whole process. I would highly recommend both Vita properties and Diana."



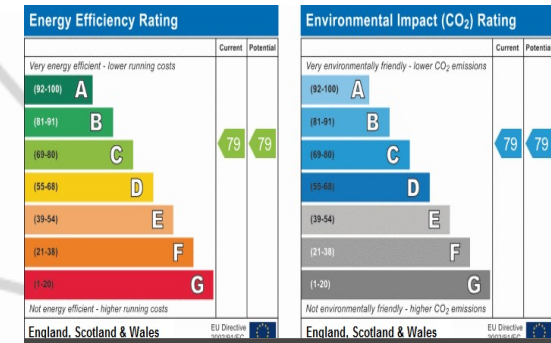
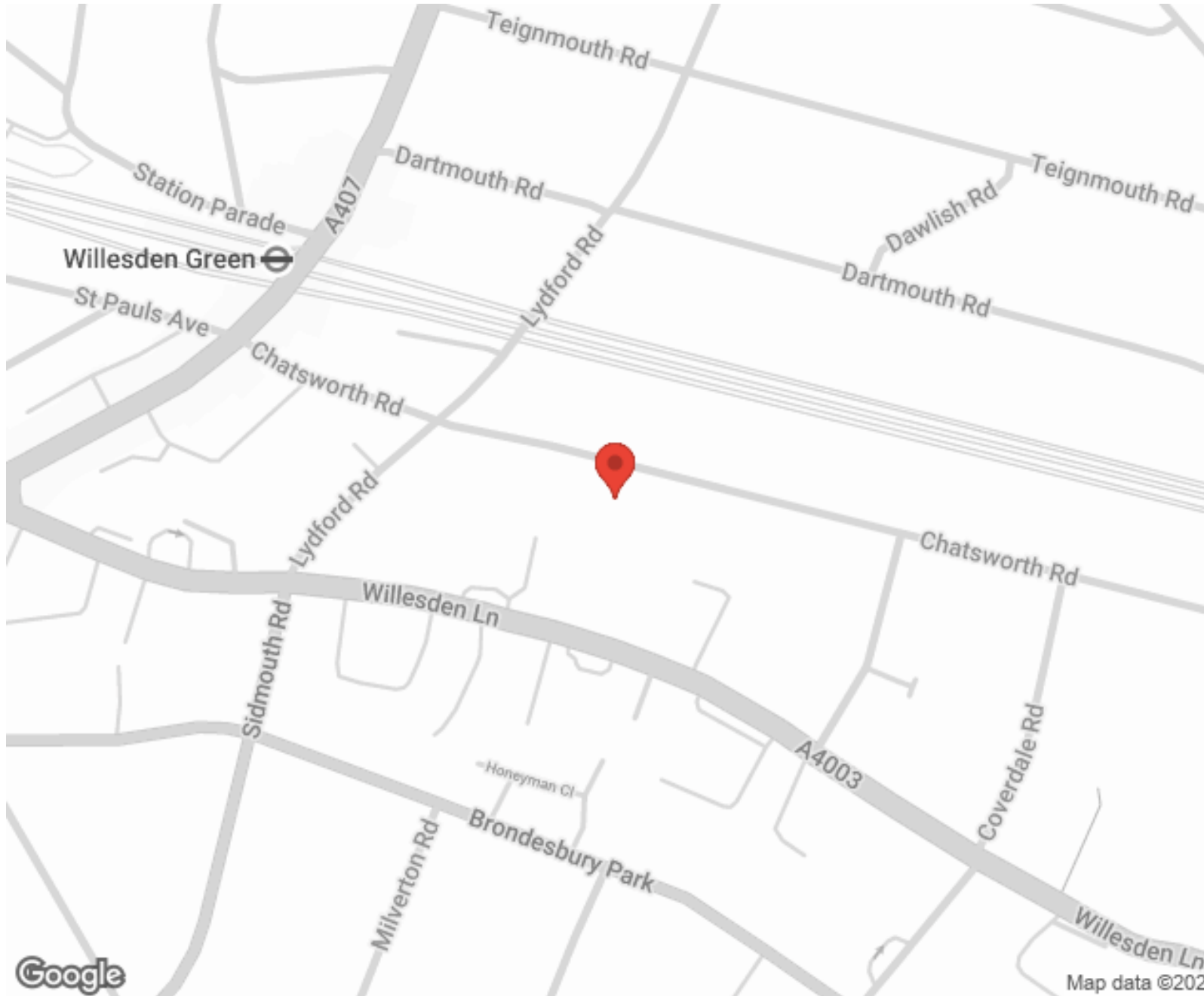
"I used Vita properties to find a flat recently and it was an overall professional, personalised and positive experience. Saira went the extra mile to accommodate to our needs and quick to help us whenever possible."



**MORE INFO, PICTURES,
CONTACT ON
OUR WEBSITE**



"Vita Properties is a very professional agency. My experience with them was incredible and the entire team was very helpful and kind throughout the renting process. I'd highly recommend!"



SCAN FOR MORE GOOGLE REVIEWS

Google
★★★★★
4.9 Stars | 132 Reviews

Find us on social media

- vitaproperties
- VitaProperties
- VitaProperties

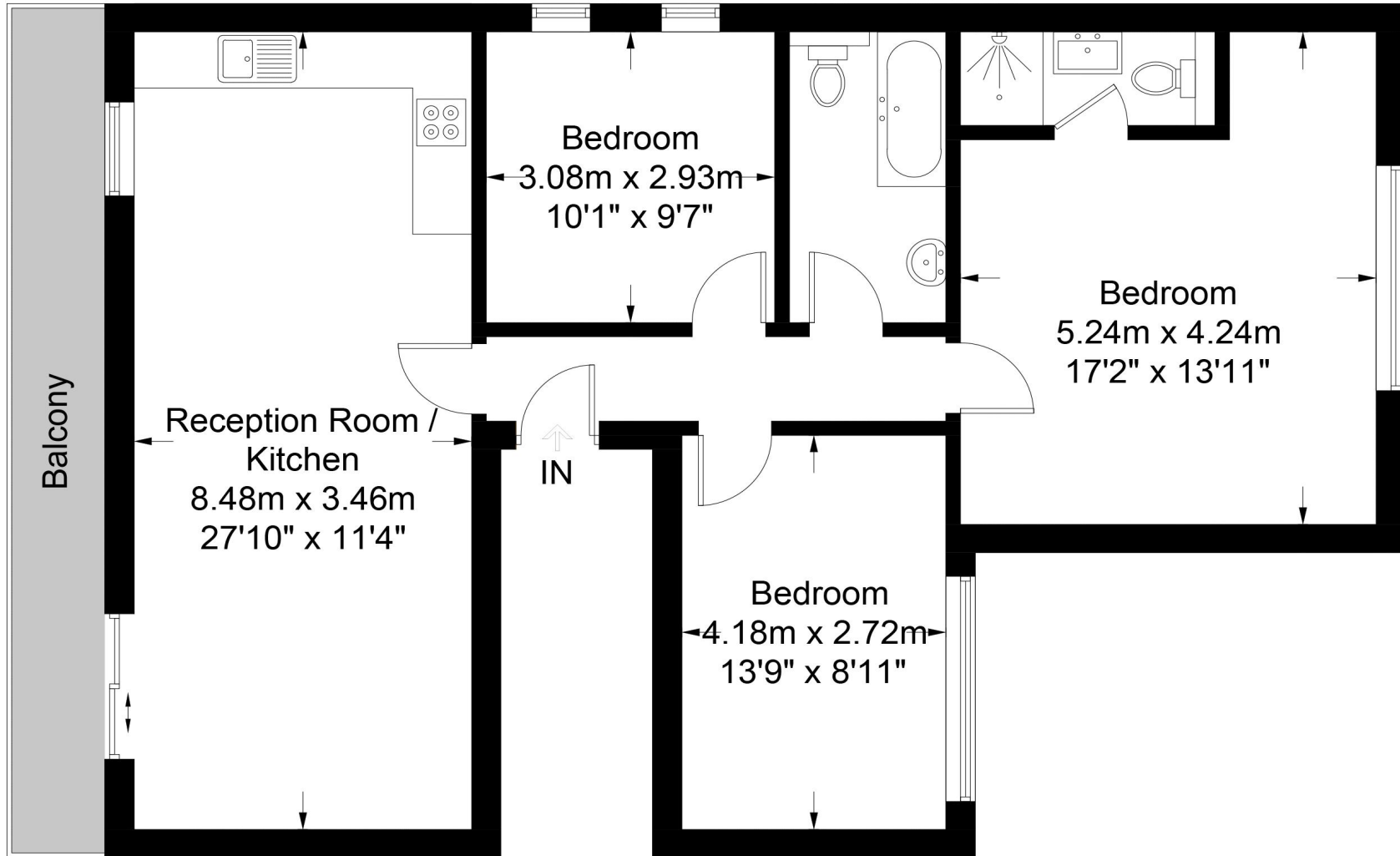


Map data ©2025

Chatsworth Road



Approximate Gross Internal Area = 911 sq ft / 84.6 sq m



First Floor

This plan is for layout guidance only. Not drawn to scale unless stated. Windows and door openings are approximate. Whilst every care is taken in the preparation of this plan, please check all dimensions, shapes and compass bearings before making any decisions reliant upon them. (ID600717)