



Oak Hill Park, Hampstead, London, NW3 .| £1,650,000

- Parking
- Lift
- Porter
- Share of freehold with a long lease

"Vita Properties have been tremendously helpful throughout the process of securing/renting my flat. Informative about the property, prompt communication, easy to use dashboard for sharing of information, and pleasant to work with. Highly recommend!"

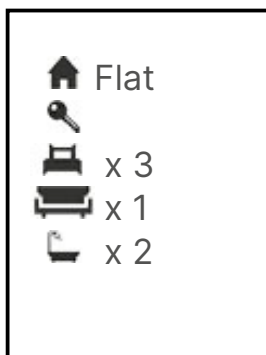
Set in one of Hampstead most sought after locations is a newly refurbished, first floor, three bed, 2 bathroom apartment. The property has a number of benefits including use of lovely communal gardens and a private tennis court, brand new aluminium doubled glazed windows throughout, a spacious lounge/diner with adjoining enclosed balcony, master bedroom with en-suite and a further balcony, 2 further bedrooms, a family bathroom and a lift. The flat also benefits from off street parking and a garage. This property is set just a stones throw away from Hampstead Village and all of the shops and amenities.



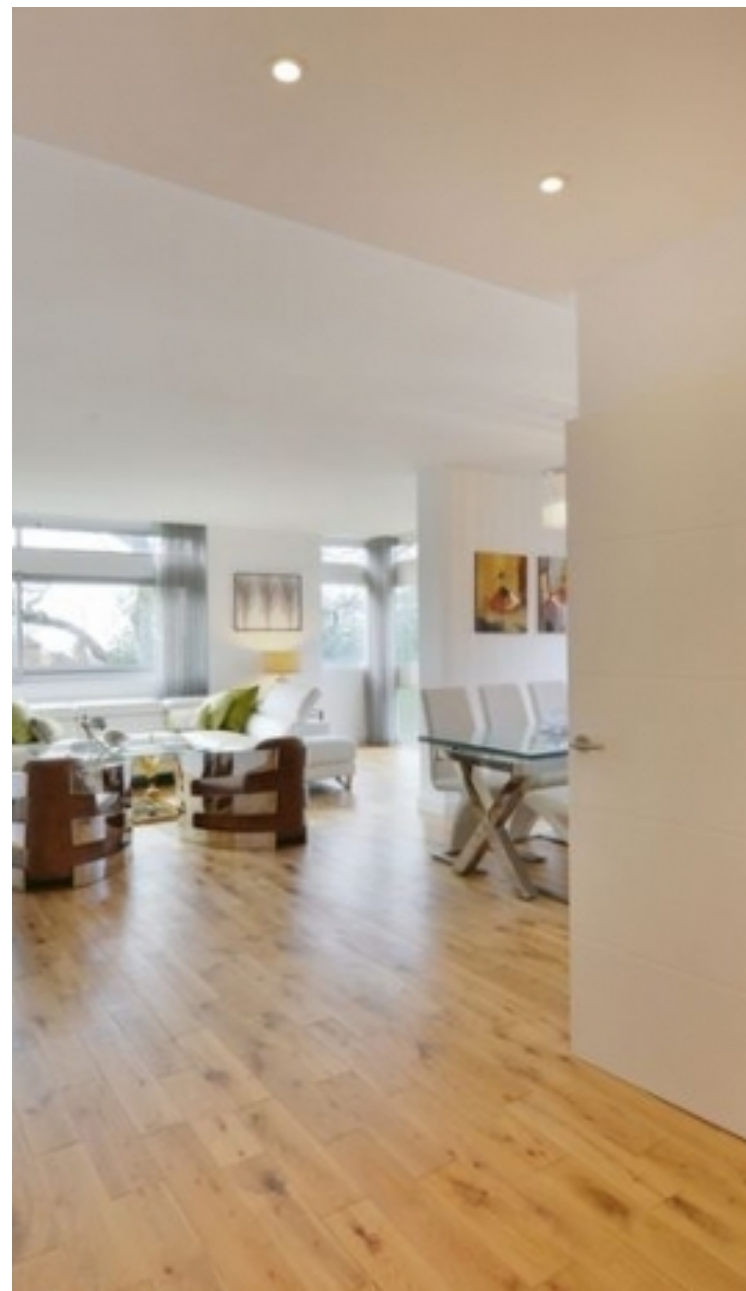
Oliver Kent

✉ oliver.kent@vitaproperties.uk

☎ +4477 7274 0351



"I was very impressed with Vita and their network of buyers. When the sale of my flat fell through (twice) they worked extremely hard to find new buyers in a difficult market - thank you!"



"Working with Vita properties has been a smooth experience! No complaints at all. Our letting agent, Diana has been fantastic and very helpful throughout the whole process. I would highly recommend both Vita properties and Diana."



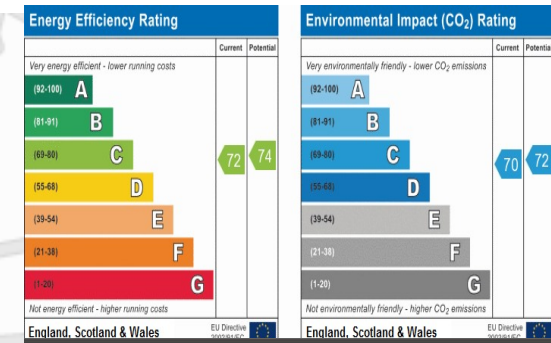
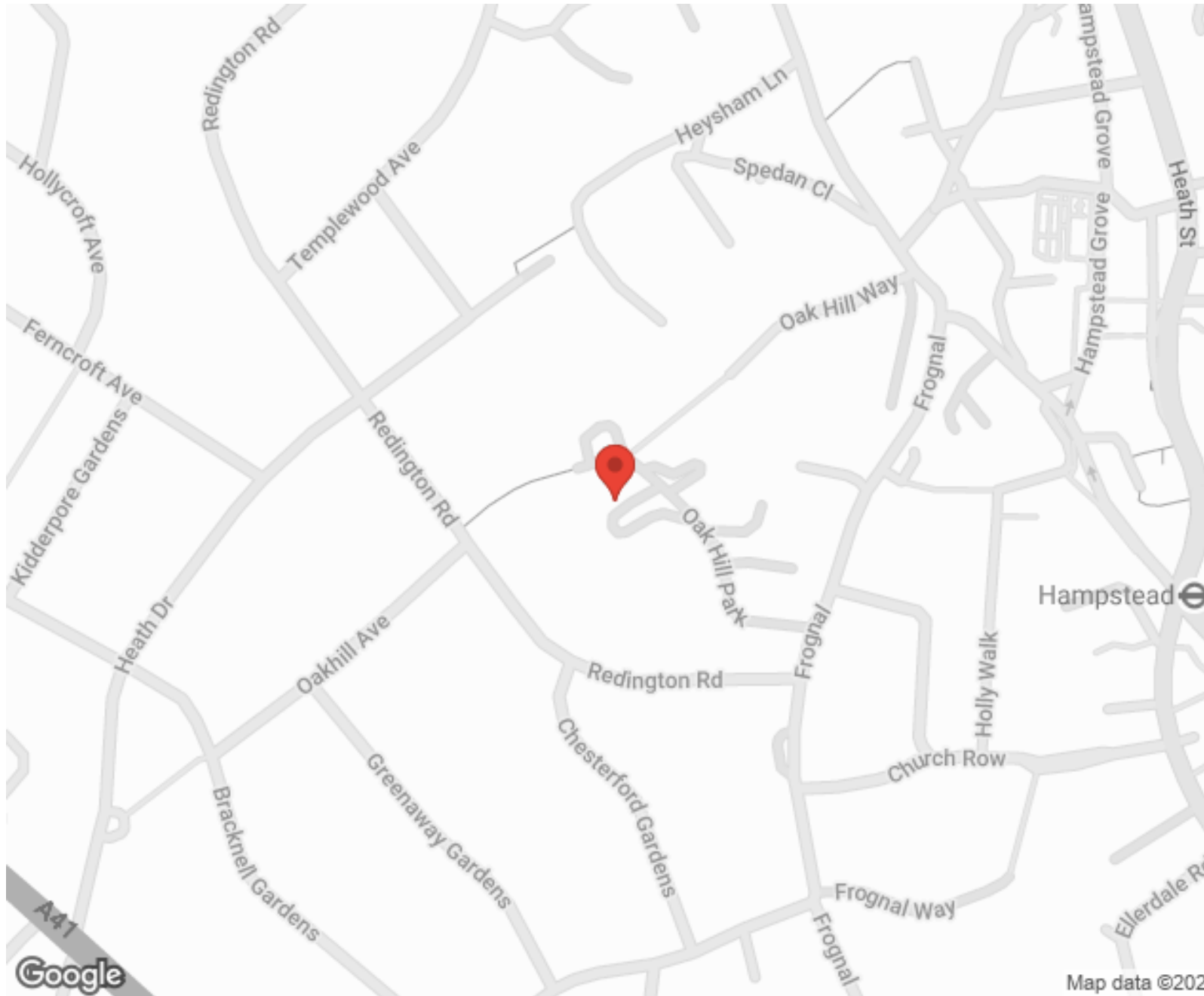
"I used Vita properties to find a flat recently and it was an overall professional, personalised and positive experience. Saira went the extra mile to accommodate to our needs and quick to help us whenever possible."



**MORE INFO, PICTURES,
CONTACT ON
OUR WEBSITE**



"Vita Properties is a very professional agency. My experience with them was incredible and the entire team was very helpful and kind throughout the renting process. I'd highly recommend!"



SCAN FOR MORE GOOGLE REVIEWS

Google
★★★★★
4.9 Stars | 132 Reviews

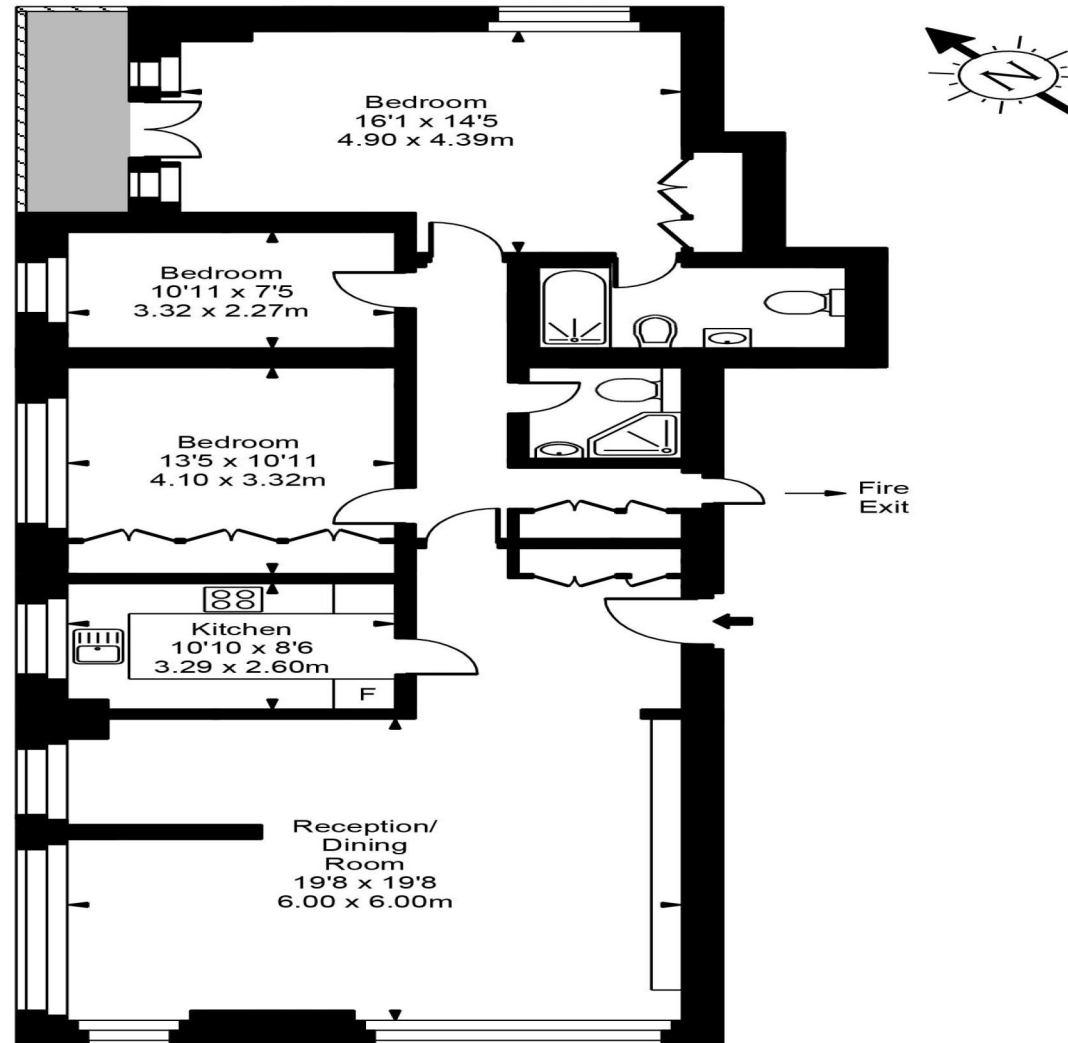
Find us on social media

- vitaproperties
- VitaProperties
- VitaProperties



Map data ©2024

Merlin House



Approx Gross Internal Area **1266 Sq Ft - 117.61 Sq M**

FOR ILLUSTRATIVE PURPOSES ONLY. NOT TO SCALE.

Whilst every attempt has been made to ensure the accuracy of the floorplan shown, all measurements, positioning, fixtures, fittings and any other data shown are an approximate interpretation for illustrative purposes only and are not to scale. No responsibility is taken for any error, omission, mis-statement or use of data shown. Floor plan by www.bestangle.co.uk