



## Ryders Terrace, St Johns Wood, London, NW8 .| £692

- Stucco fronted mews house
- 2/3 bedrooms with loft
- Open plan dining and reception room
- Fitted kitchen with stainless steel appliances
- Roof terrace above kitchen
- Residents parking area
- Available 20th Oct
- Furnished or Unfurnished

"Vita Properties have been tremendously helpful throughout the process of securing/renting my flat. Informative about the property, prompt communication, easy to use dashboard for sharing of information, and pleasant to work with. Highly recommend!"

Luxurious recently refurbished 2/3 bedroom mews house, with a Stucco Front. The house consists of having 2/3 bedrooms, open plan dining room, modern kitchen and a family bathroom. The house benefits from having a gas fireplace in reception, alarm and Intercom Entry phone and a private roof terrace. Close to the local amenities of Abbey Road. Available 20th Oct .

Furnished or unfurnished



Oliver Kent

✉ [oliver.kent@vitaproperties.uk](mailto:oliver.kent@vitaproperties.uk)

☎ +4477 7274 0351



🏠 House  
🔑 Available  
to Let  
🛏 x 2  
🛋 x 1  
🚿 x 2



"I was very impressed with Vita and their network of buyers. When the sale of my flat fell through (twice) they worked extremely hard to find new buyers in a difficult market - thank you!"

---



"Working with Vita properties has been a smooth experience! No complaints at all. Our letting agent, Diana has been fantastic and very helpful throughout the whole process. I would highly recommend both Vita properties and Diana."

---



"I used Vita properties to find a flat recently and it was an overall professional, personalised and positive experience. Saira went the extra mile to accommodate to our needs and quick to help us whenever possible."

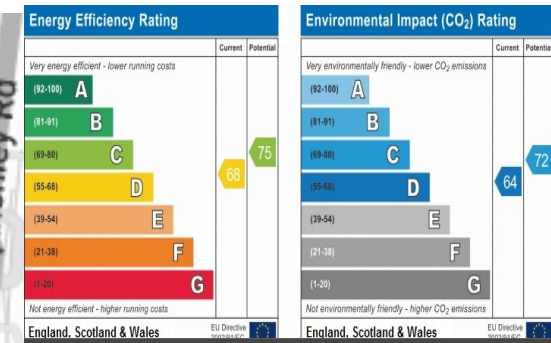
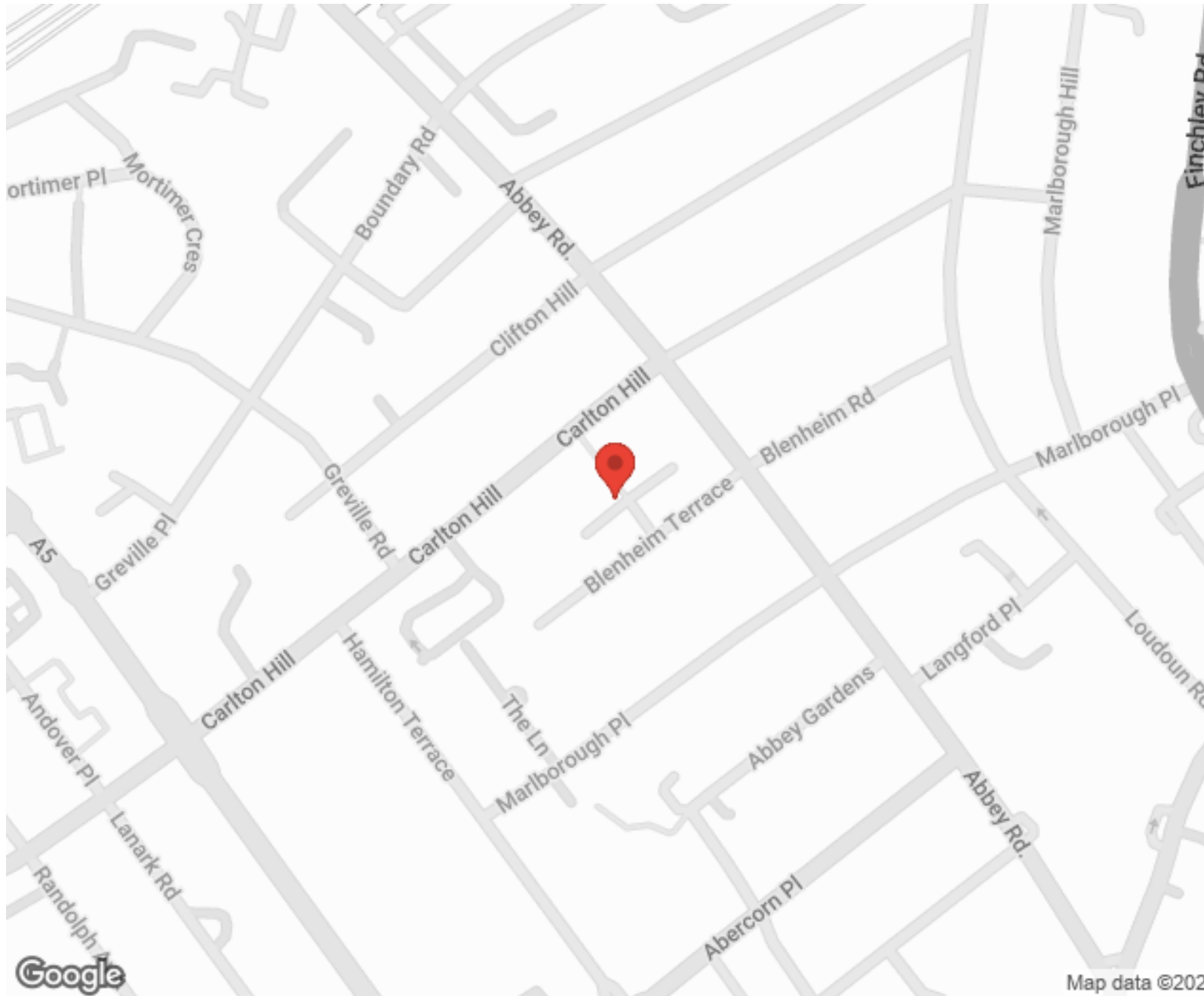
---



**MORE INFO, PICTURES,  
CONTACT ON  
OUR WEBSITE**



"Vita Properties is a very professional agency. My experience with them was incredible and the entire team was very helpful and kind throughout the renting process. I'd highly recommend!"



SCAN FOR MORE GOOGLE REVIEWS

Google  
★★★★★  
4.9 Stars | 132 Reviews

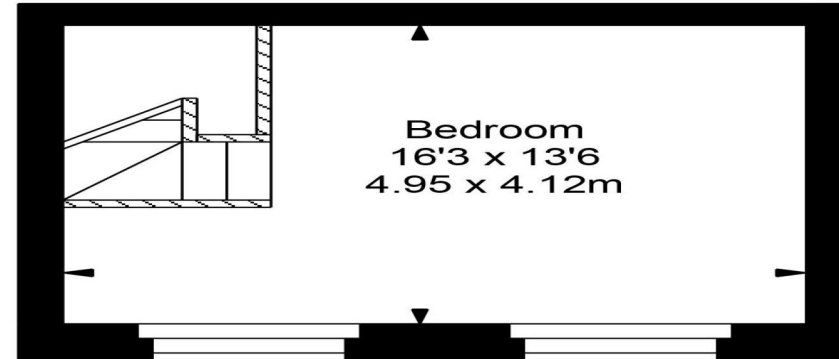
Find us on social media

- vitaproperties
- VitaProperties
- VitaProperties

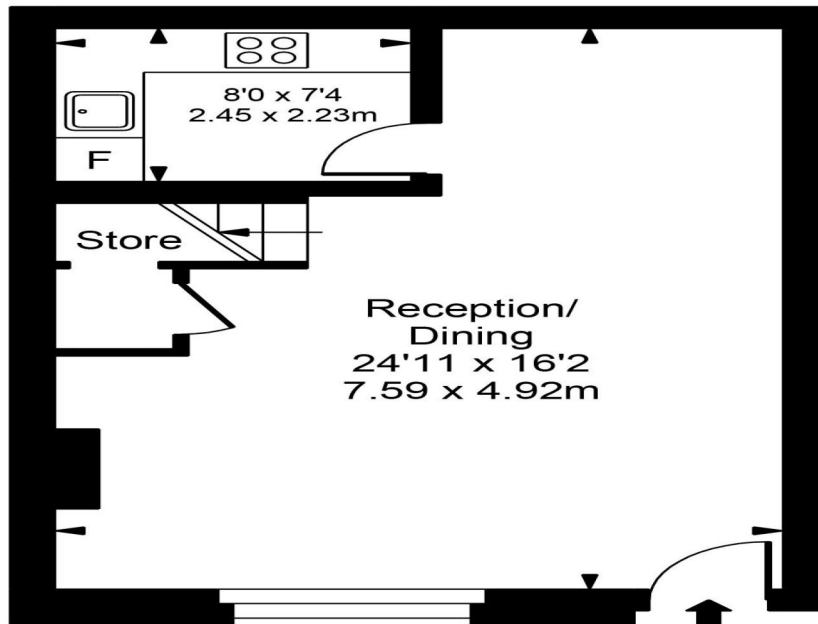


Map data ©2024

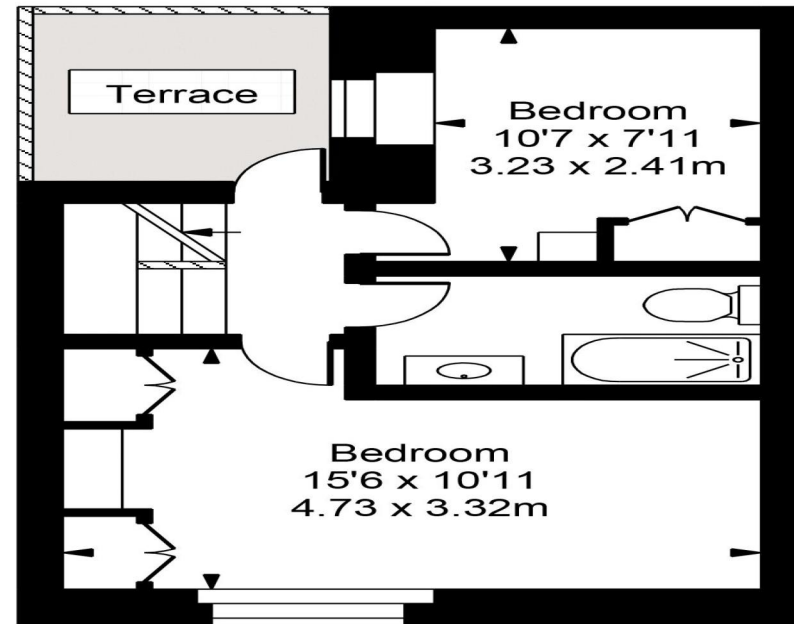
# Ryders Terrace



Second Floor



Ground Floor



First Floor



**Approx Gross Internal Area 952 Sq Ft - 88.44 Sq M**

FOR ILLUSTRATIVE PURPOSES ONLY. NOT TO SCALE.

Whilst every attempt has been made to ensure the accuracy of the floorplan shown, all measurements, positioning, fixtures, fittings and any other data shown are an approximate interpretation for illustrative purposes only and are not to scale. No responsibility is taken for any error, omission, miss-statement or use of data shown.

Floor plan by [www.bestangle.co.uk](http://www.bestangle.co.uk)