



Lancaster Mews, London W2 .| £1,250

- Mews House
- Three Bed, Two Bath
- Three-Storey
- Charming & Full of Character

- Available Late July

"Vita Properties have been tremendously helpful throughout the process of securing/renting my flat. Informative about the property, prompt communication, easy to use dashboard for sharing of information, and pleasant to work with. Highly recommend!"

Presenting this fabulous, redeveloped, three-storey mews house.

This beautifully presented property implements lots of unique design elements, which increases the character and charm. Comprising of a large, light-flooded reception room, second reception room, designated study, contemporary, sand-wood kitchen with fully integrated appliances, 3 further bedrooms with the master benefiting from en-suite bathroom access, utility room and guest WC.

Set on a picturesque, cobblestone street, this delightful mews house is ideally situated within prime 'W2' location, and situated a mere stone's throw from Kensington Gardens & Hyde Park.



Oliver Kent

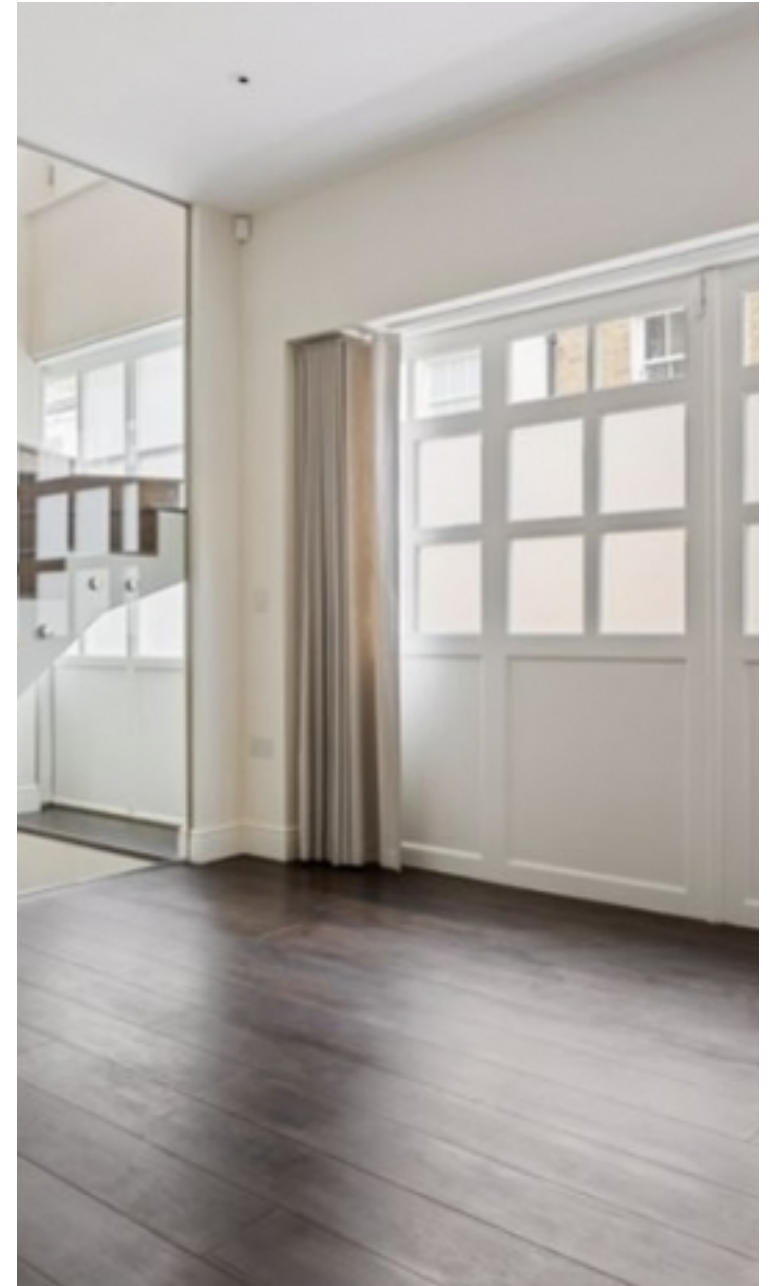
✉ oliver.kent@vitaproperties.uk

☎ +4477 7274 0351



- 🏠 House
- 🔑 Under Negotiation
- 🛋 x 4
- 🛏 x 1
- 🚿 x 2

"I was very impressed with Vita and their network of buyers. When the sale of my flat fell through (twice) they worked extremely hard to find new buyers in a difficult market - thank you!"



"Working with Vita properties has been a smooth experience! No complaints at all. Our letting agent, Diana has been fantastic and very helpful throughout the whole process. I would highly recommend both Vita properties and Diana."



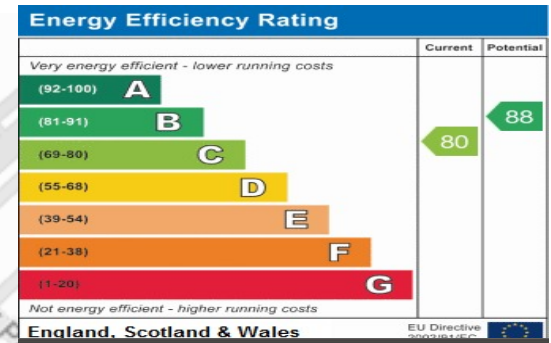
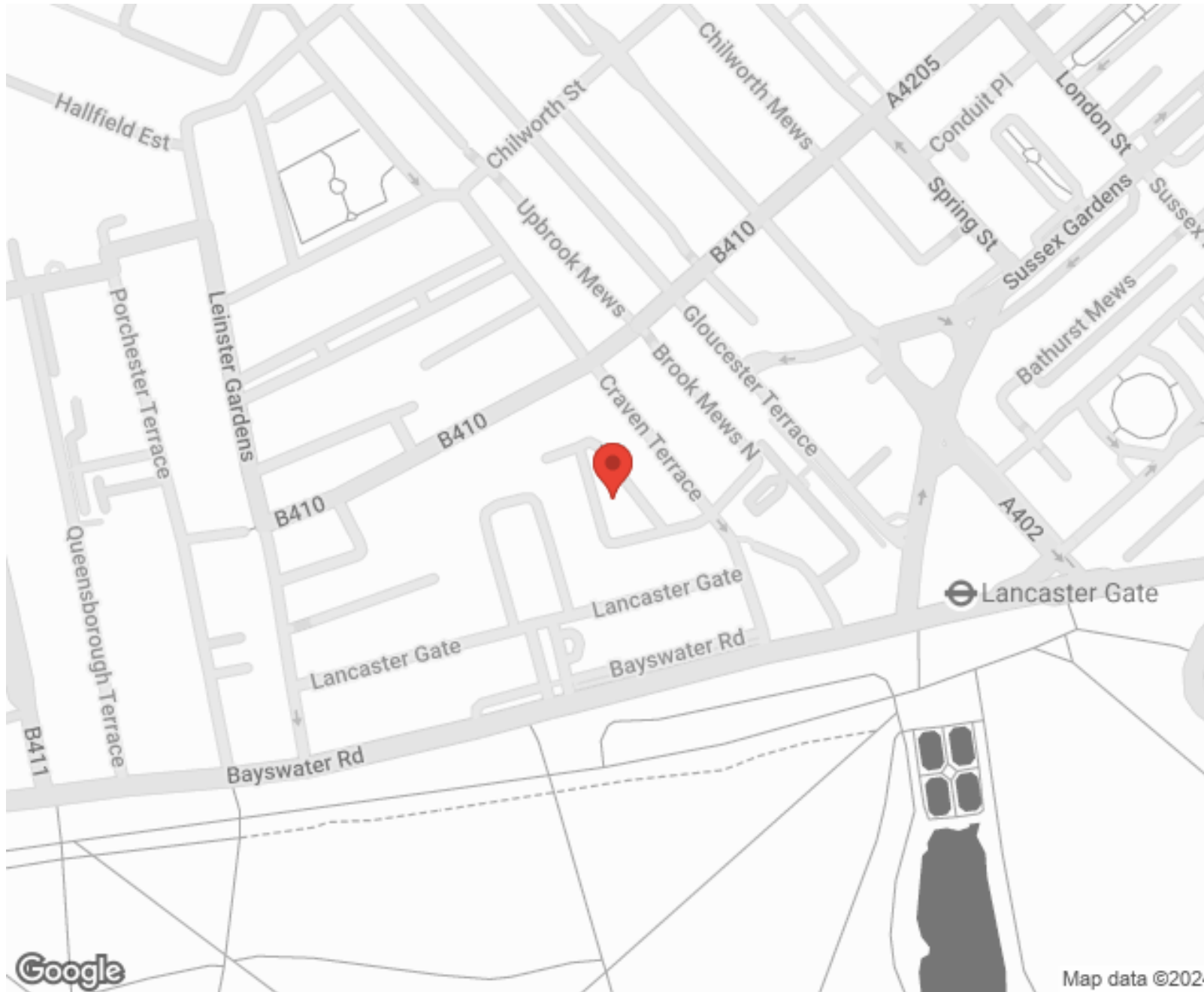
"I used Vita properties to find a flat recently and it was an overall professional, personalised and positive experience. Saira went the extra mile to accommodate to our needs and quick to help us whenever possible."



**MORE INFO, PICTURES,
CONTACT ON
OUR WEBSITE**



"Vita Properties is a very professional agency. My experience with them was incredible and the entire team was very helpful and kind throughout the renting process. I'd highly recommend!"



SCAN FOR MORE GOOGLE REVIEWS

Google
★★★★★
4.9 Stars | 132 Reviews

Find us on social media

- vitaproperties
- VitaProperties
- VitaProperties

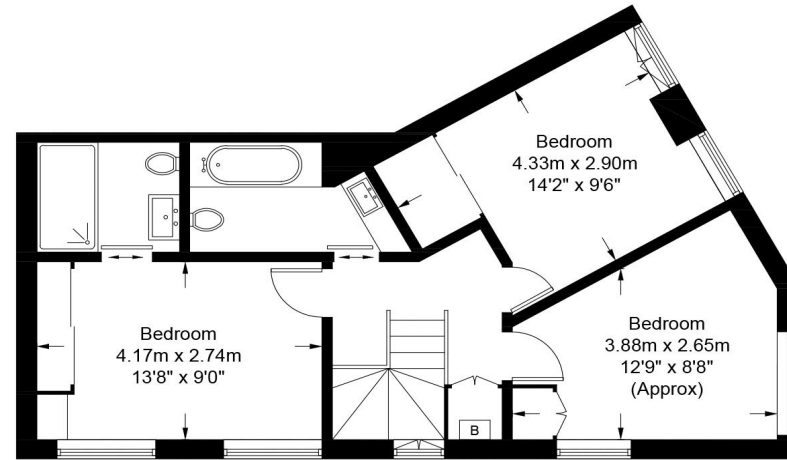


Lancaster Mews, W2

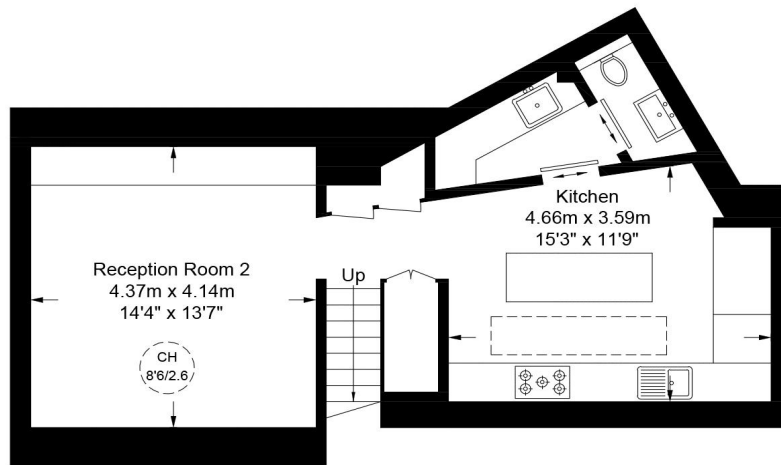
Approximate Gross Internal Area = 1129 sq ft / 104.9 sq m

Basement = 499 sq ft / 46.4 sq m

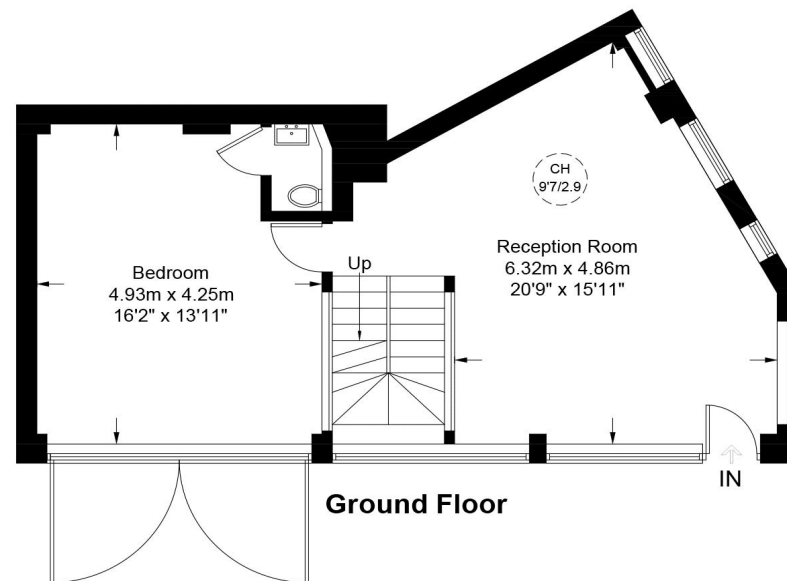
Total = 1628 sq ft / 151.3 sq m



First Floor



Basement



Ground Floor

This plan is for layout guidance only. Not drawn to scale unless stated. Windows and door openings are approximate. Whilst every care is taken in the preparation of this plan, please check all dimensions, shapes and compass bearings before making any decisions reliant upon them. (ID779126)