



Adelaide Road, Swiss Cottage, London NW3 .| £800,000

- Mansion Block
- First Floor
- Three Bedrooms
- Two Bathrooms

- Secondary Glazing
- Superb Location

"Vita Properties have been tremendously helpful throughout the process of securing/renting my flat. Informative about the property, prompt communication, easy to use dashboard for sharing of information, and pleasant to work with. Highly recommend!"

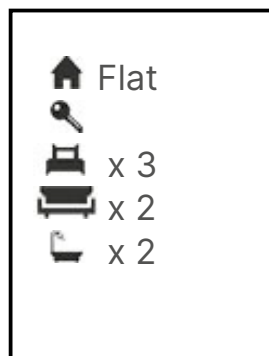
Superb opportunity to acquire this spacious 3 bedroom apartment offering circa 25ft through reception-dining room, modern fitted kitchen, 2 bathrooms, guest W/c. The flat is placed on the 1st floor within this ever popular portered block in the heart of Swiss Cottage. Further benefits include: Passenger lift, communal heating and hot water, beautifully located to all the amenities of Swiss Cottage, St John's Wood and trendy Primrose Hill. The property also provides fantastic transport links around London and beyond. Long lease.



Oliver Kent

✉ [oliver.kent@vitaproperties.uk](mailto:oliver.kent@vitaproperties.uk)

☎ +4477 7274 0351



"I was very impressed with Vita and their network of buyers. When the sale of my flat fell through (twice) they worked extremely hard to find new buyers in a difficult market - thank you!"

---



"Working with Vita properties has been a smooth experience! No complaints at all. Our letting agent, Diana has been fantastic and very helpful throughout the whole process. I would highly recommend both Vita properties and Diana."

---



"I used Vita properties to find a flat recently and it was an overall professional, personalised and positive experience. Saira went the extra mile to accommodate to our needs and quick to help us whenever possible."

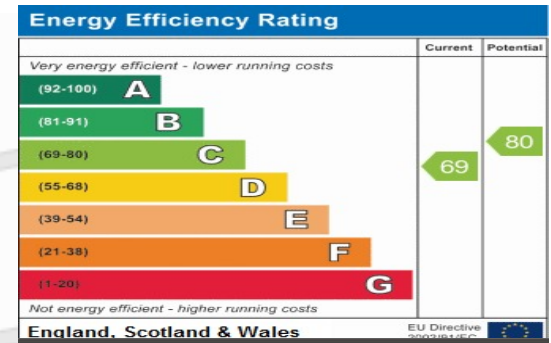
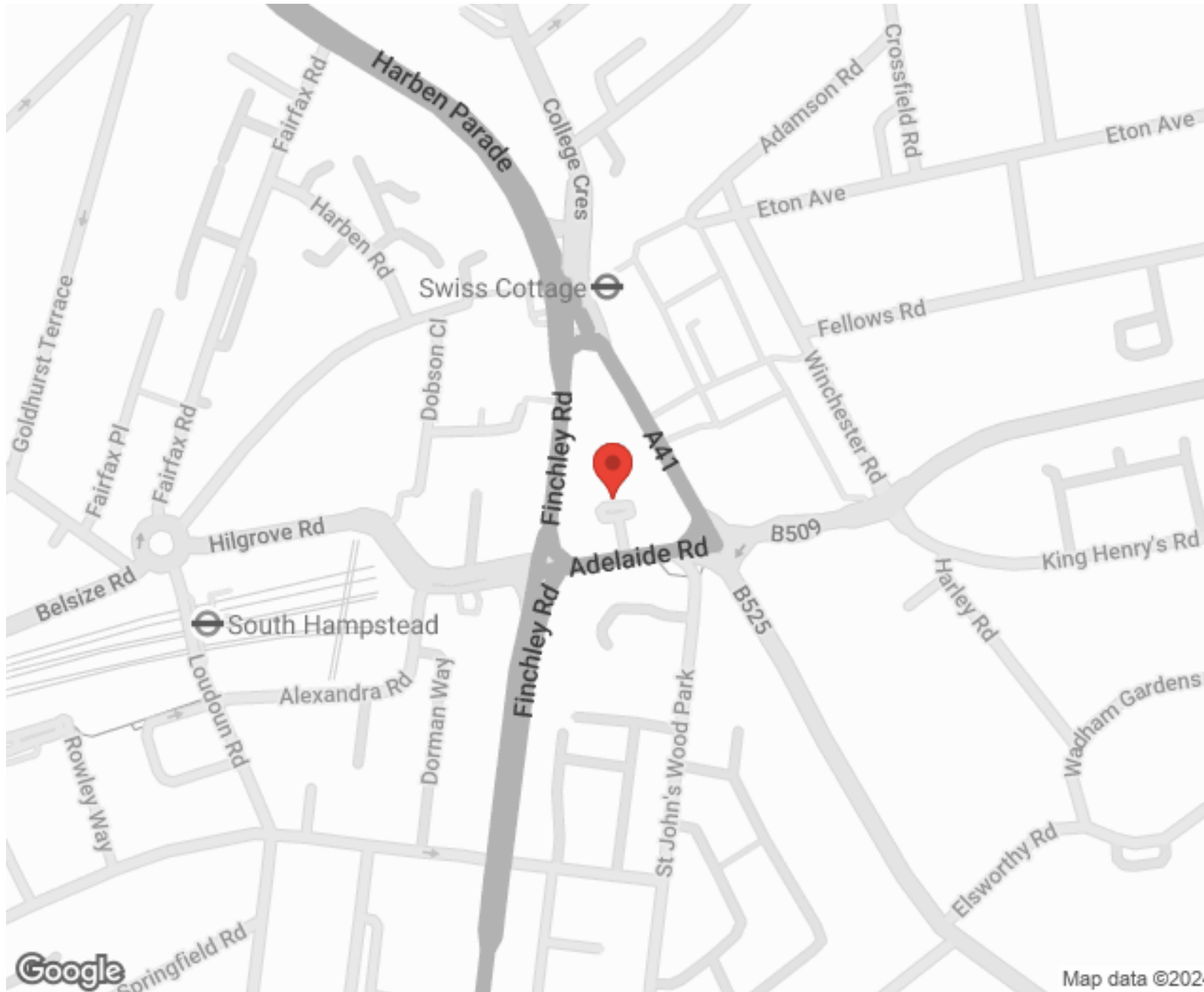
---



**MORE INFO, PICTURES,  
CONTACT ON  
OUR WEBSITE**



"Vita Properties is a very professional agency. My experience with them was incredible and the entire team was very helpful and kind throughout the renting process. I'd highly recommend!"

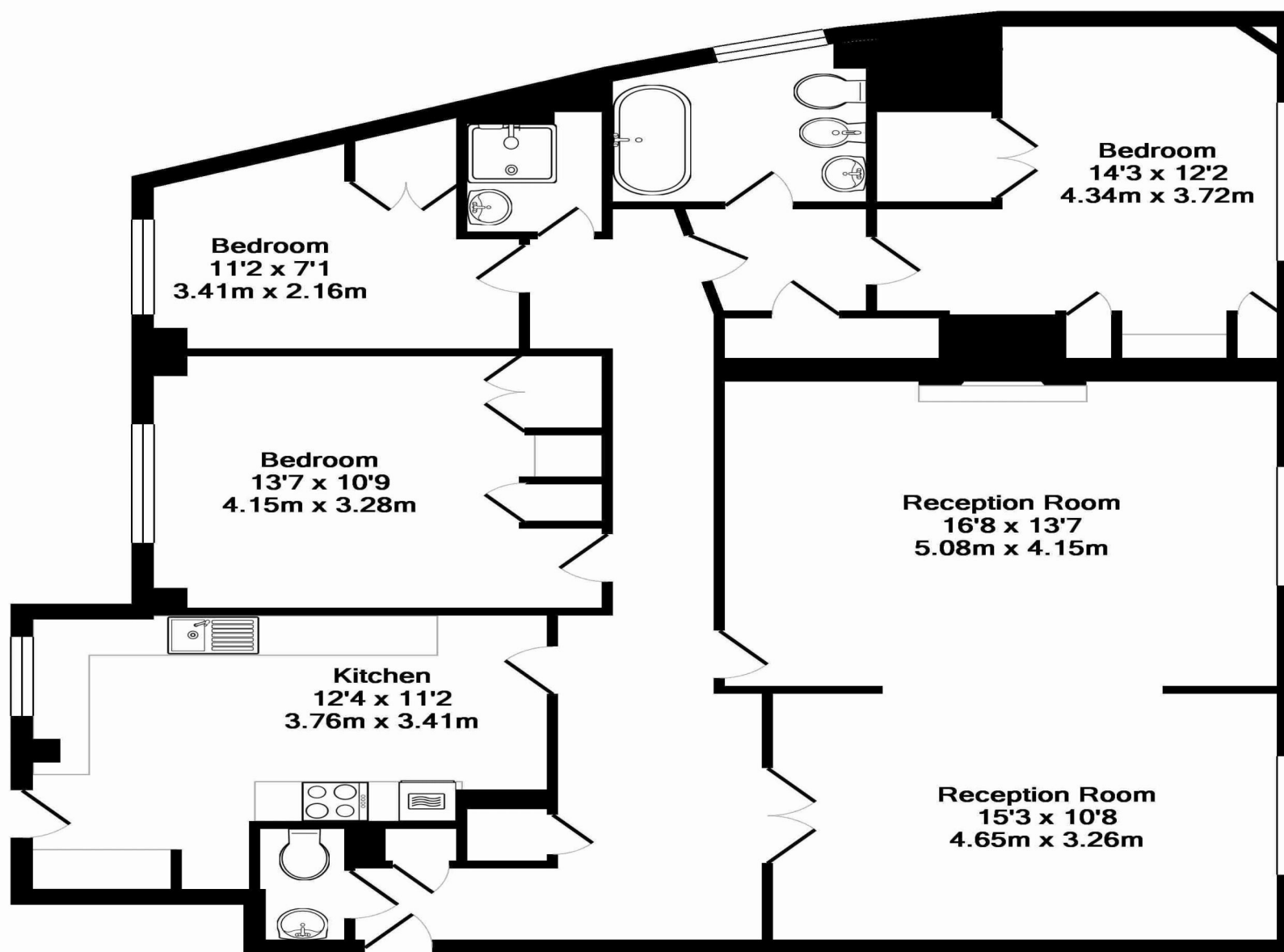
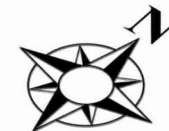


SCAN FOR MORE GOOGLE REVIEWS

Google  
★★★★★  
4.9 Stars | 132 Reviews

Find us on social media

- vitaproperties
- VitaProperties
- VitaProperties



Total Approx. Floor Area 1211 Sq.Ft. (112.5 Sq.M.)

KeyAGENT LTD Floor Plans are produced and provided for illustration purposes only. Whilst every attempt has been made to ensure the plan is accurate and presents the property in the best way, measurements of doors, windows and rooms are approximate and no responsibility is taken for any error, omission or mis-statement. To find out more about KeyAGENT please visit [www.keyagent.co.uk](http://www.keyagent.co.uk)  
(Tel: 0845 475 4165)  
Made with Metropix ©2012