



Murray Street, Camden, London, NW1. | £560

- Lift
- Modern finish
- Located moments to the local amenities of Camden and Kentish Town
- Furnished

- Perfect for sharers or a small family
- Available Now!

"Vita Properties have been tremendously helpful throughout the process of securing/renting my flat. Informative about the property, prompt communication, easy to use dashboard for sharing of information, and pleasant to work with. Highly recommend!"

Available Now - A spacious 3 bedroom home situated on the second floor (with lift access) of this modern apartment building, featuring clean, neutral décor, wooden floors throughout and large windows for plenty of natural light. The flat is immaculately presented throughout, with a spacious master bedroom featuring large fitted wardrobes, en-suite bathroom with a walk-in shower, bright reception room and a contemporary kitchen with fully integrated appliances. Murray Street is located minutes from the local amenities of trendy Camden and Kentish Town.



Oliver Kent

✉ oliver.kent@vitaproperties.uk

☎ +4477 7274 0351



🏠	Flat
🔑	Available to Let
🛏️	x 3
🛋️	x 1
🚿	x 2



"I was very impressed with Vita and their network of buyers. When the sale of my flat fell through (twice) they worked extremely hard to find new buyers in a difficult market - thank you!"



"Working with Vita properties has been a smooth experience! No complaints at all. Our letting agent, Diana has been fantastic and very helpful throughout the whole process. I would highly recommend both Vita properties and Diana."



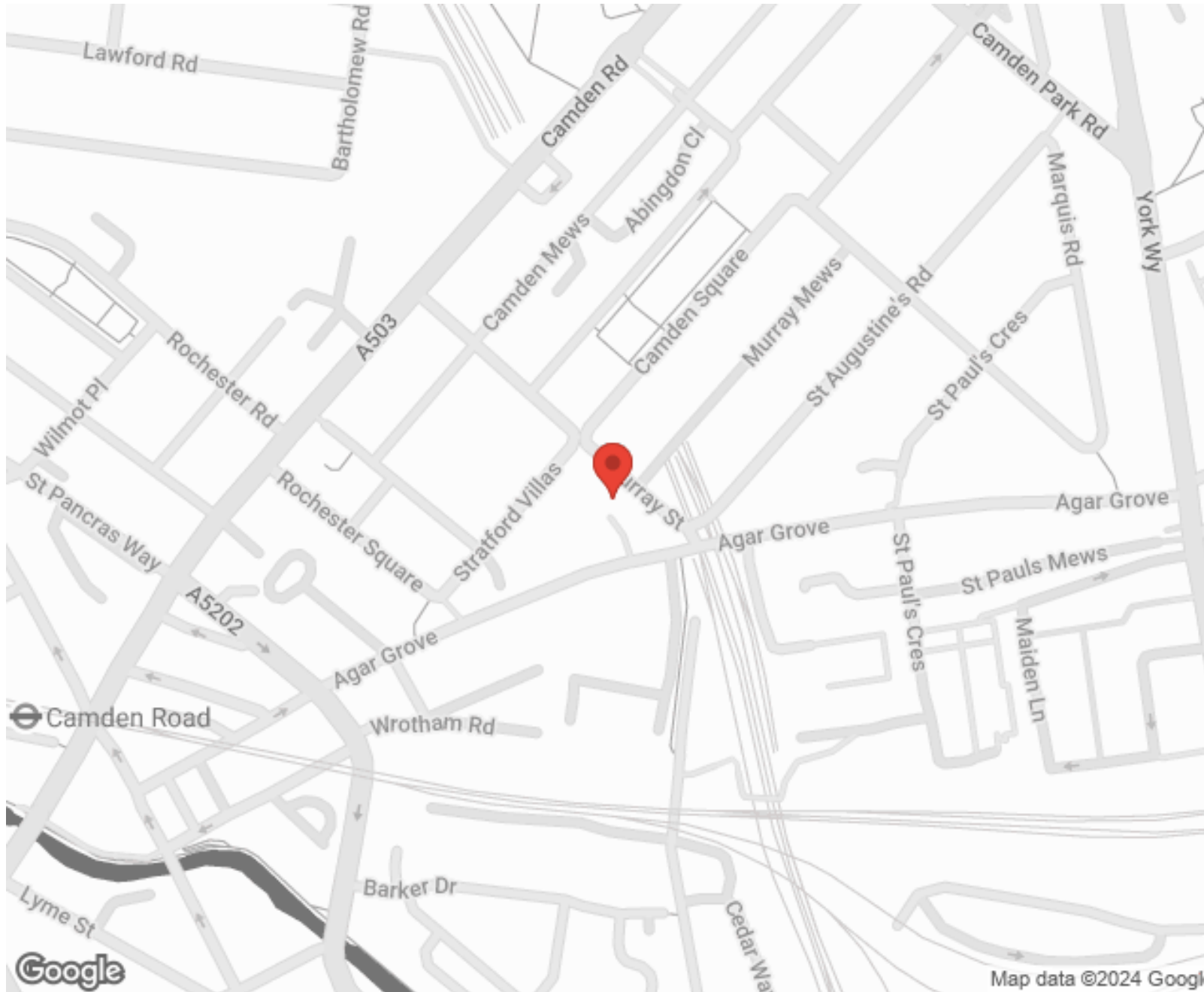
"I used Vita properties to find a flat recently and it was an overall professional, personalised and positive experience. Saira went the extra mile to accommodate to our needs and quick to help us whenever possible."



**MORE INFO, PICTURES,
CONTACT ON
OUR WEBSITE**



"Vita Properties is a very professional agency. My experience with them was incredible and the entire team was very helpful and kind throughout the renting process. I'd highly recommend!"



Energy Efficiency Rating		Current	Potential
Very energy efficient - lower running costs			
(92-100)	A		
(81-91)	B		
(69-80)	C	77	78
(55-68)	D		
(39-54)	E		
(21-38)	F		
(1-20)	G		
Not energy efficient - higher running costs			
England, Scotland & Wales		EU Directive 2002/91/EC	

SCAN FOR MORE
GOOGLE REVIEWS



Google

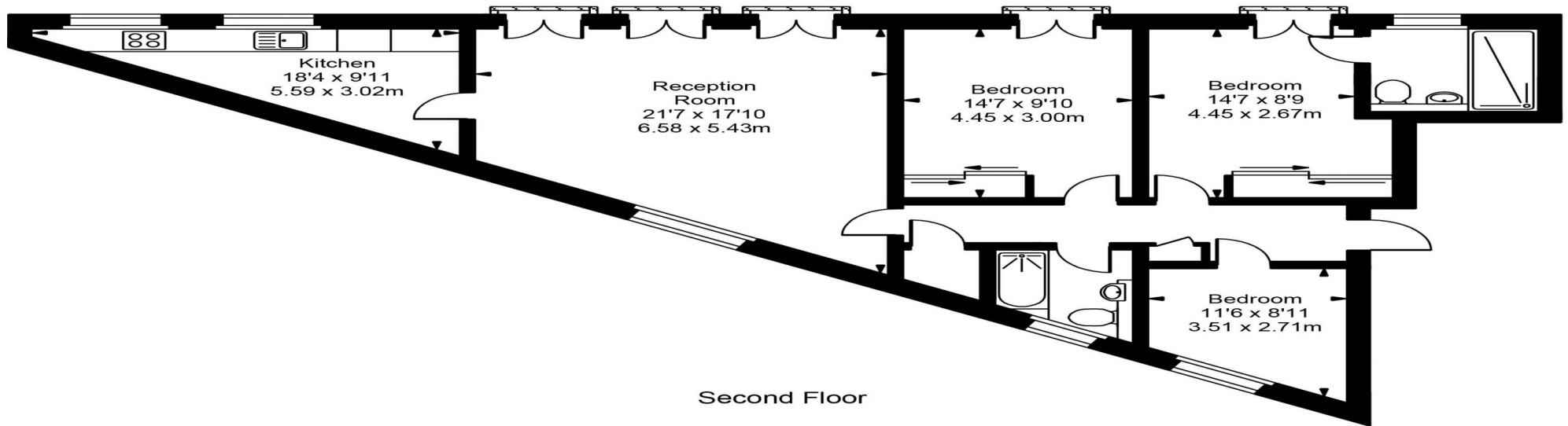
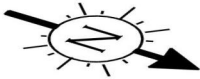


4.9 Stars | 132 Reviews

Find us on social media

-  vitaproperties
-  VitaProperties
-  VitaProperties

7 Belvard Point



Second Floor



Approx Gross Internal Area **1019 Sq Ft - 94.64 Sq M**

For Illustration Purposes Only - Not To Scale
Floor plan by www.bestangle.co.uk