



Boydell Court, St. Johns Wood Park, London, NW8 .| £2,475

- Penthouse Apartment
- Separate Maids Entrance
- Bespoke Interior Design
- German Kitchen with Stone Italian Worktops

• Available Now!

"Vita Properties have been tremendously helpful throughout the process of securing/renting my flat. Informative about the property, prompt communication, easy to use dashboard for sharing of information, and pleasant to work with. Highly recommend!"

This impressive five bed, five bath apartment has a lot to offer. Set within the prime NW8 postcode, this penthouse apartment offers a very generous five bedrooms; three of which having access to their own ensuite. Large kitchen, fully fitted with Bosch appliances and connecting breakfast room, separate dining room, large bright reception and spiraling staircase to upstairs.

Decorated to an extremely high standard with bespoke interior design including a German kitchen with Italian stone work-surfaces, wooden floors to bedrooms, large fitted wardrobes, beautiful white matte tiles in the kitchen and living areas and fully tiled bathrooms with multi-jet power showers.

Set within a gated community you will also benefit from a dedicated 24-hour portorage, alarm and video entry, as well as the added benefit of lockers, garages and parking space available for rent via a separate negotiation.

	Flat
	Available to Let
	x 5+
	x 1
	x 4



Oliver Kent

 oliver.kent@vitaproperties.uk
 +4477 7274 0351



"I was very impressed with Vita and their network of buyers. When the sale of my flat fell through (twice) they worked extremely hard to find new buyers in a difficult market - thank you!"



"Working with Vita properties has been a smooth experience! No complaints at all. Our letting agent, Diana has been fantastic and very helpful throughout the whole process. I would highly recommend both Vita properties and Diana."



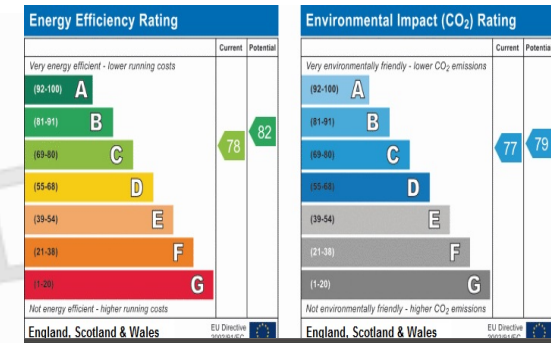
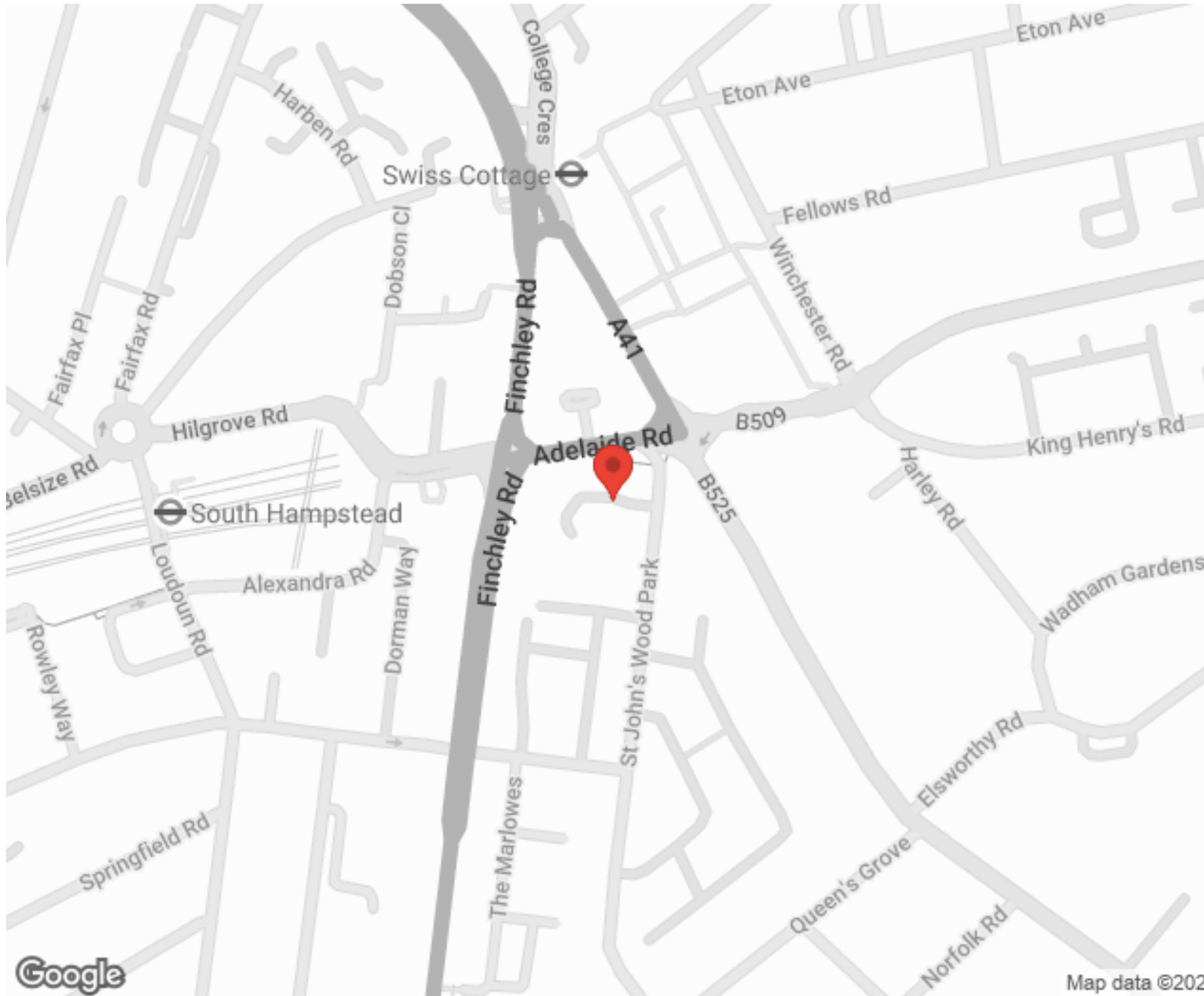
"I used Vita properties to find a flat recently and it was an overall professional, personalised and positive experience. Saira went the extra mile to accommodate to our needs and quick to help us whenever possible."



**MORE INFO, PICTURES,
CONTACT ON
OUR WEBSITE**



"Vita Properties is a very professional agency. My experience with them was incredible and the entire team was very helpful and kind throughout the renting process. I'd highly recommend!"



SCAN FOR MORE GOOGLE REVIEWS

Google
★★★★★
4.9 Stars | 132 Reviews

Find us on social media

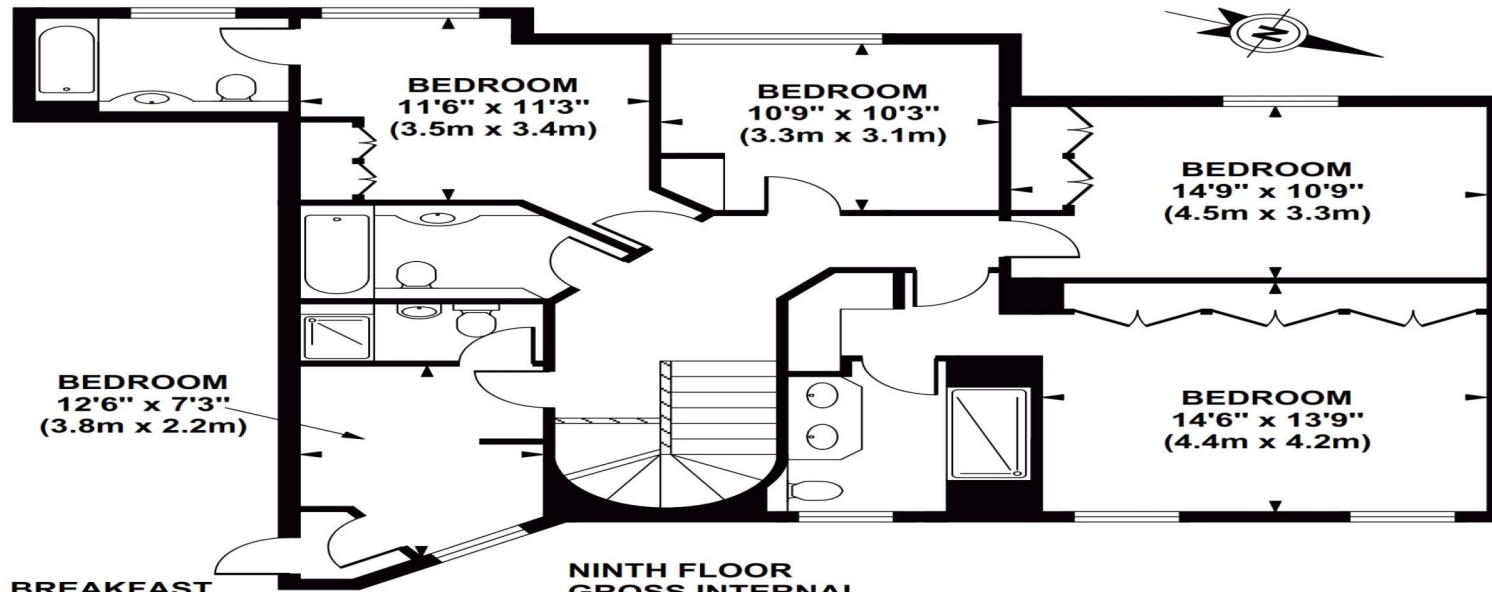
- vitaproperties
- VitaProperties
- VitaProperties



Map data ©2024

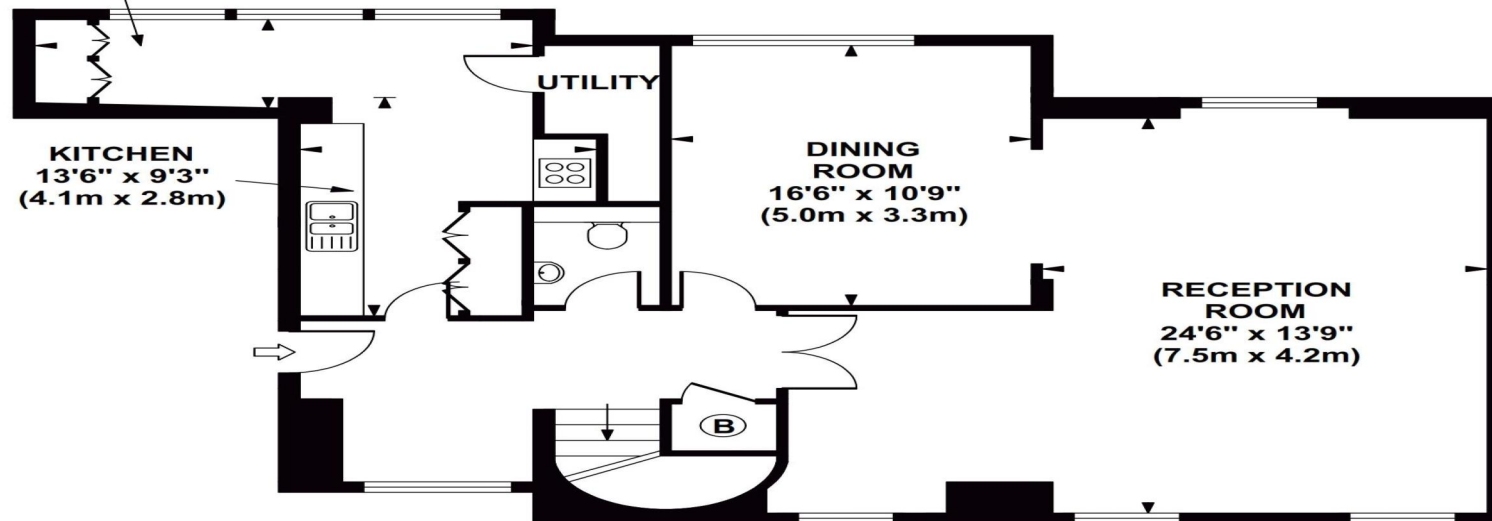
BOYDELL COURT

Approximate Gross Internal Area 2164 sq ft / 201.0 sq m



NINTH FLOOR
GROSS INTERNAL
FLOOR AREA 1106 SQ FT

BREAKFAST
16'1" x 5'6"
(4.9m x 1.7m)



EIGHTH FLOOR
GROSS INTERNAL
FLOOR AREA 1058 SQ FT

Although every attempt has been made to ensure accuracy, all measurements are approximate. The floor plan's for illustrative purposes only and not to scale. Measured in accordance to RICS standards. DE-PHOTOGRAPHY.NET