



Avenue Mansions, Finchley Road, Hampstead, London, NW3 .| £1,500,000

- 1930 sq ft / 179 sq m
- First floor in a sought after mansion block
- Communal gardens
- Onsite management

- Moments from shopping and transport amenities on West End Lane in West Hampstead
- Chain free

"Vita Properties have been tremendously helpful throughout the process of securing/renting my flat. Informative about the property, prompt communication, easy to use dashboard for sharing of information, and pleasant to work with. Highly recommend!"

Oozing natural light is this beautifully designed Four bedroom, First Floor Apartment situated within this sought-after popular mansion development (BAM Estate). The property comprises of 1930sq ft and benefits Two large reception rooms, a stunning fully fitted kitchen/breakfast room, Three bathrooms with two en-suite, separate WC, utility room, balcony, high ceilings throughout, well maintained landscaped communal gardens and a first class portorage service. The development is within walking distance to West Hampstead village offering a variety of popular shops, restuarants and coffee bars. Transportation links include West Hampstead tube station (Jubilee Line) and West Hampstead (Thames Link).

Offered chain free with 900 + lease



Oliver Kent

✉ oliver.kent@vitaproperties.uk

☎ +4477 7274 0351



	Flat
	x 4
	x 2
	x 3

SCAN FOR
A VIDEO
WALKTHROUGH

"I was very impressed with Vita and their network of buyers. When the sale of my flat fell through (twice) they worked extremely hard to find new buyers in a difficult market - thank you!"



"Working with Vita properties has been a smooth experience! No complaints at all. Our letting agent, Diana has been fantastic and very helpful throughout the whole process. I would highly recommend both Vita properties and Diana."



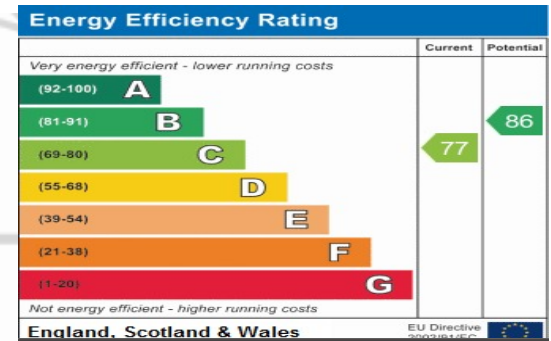
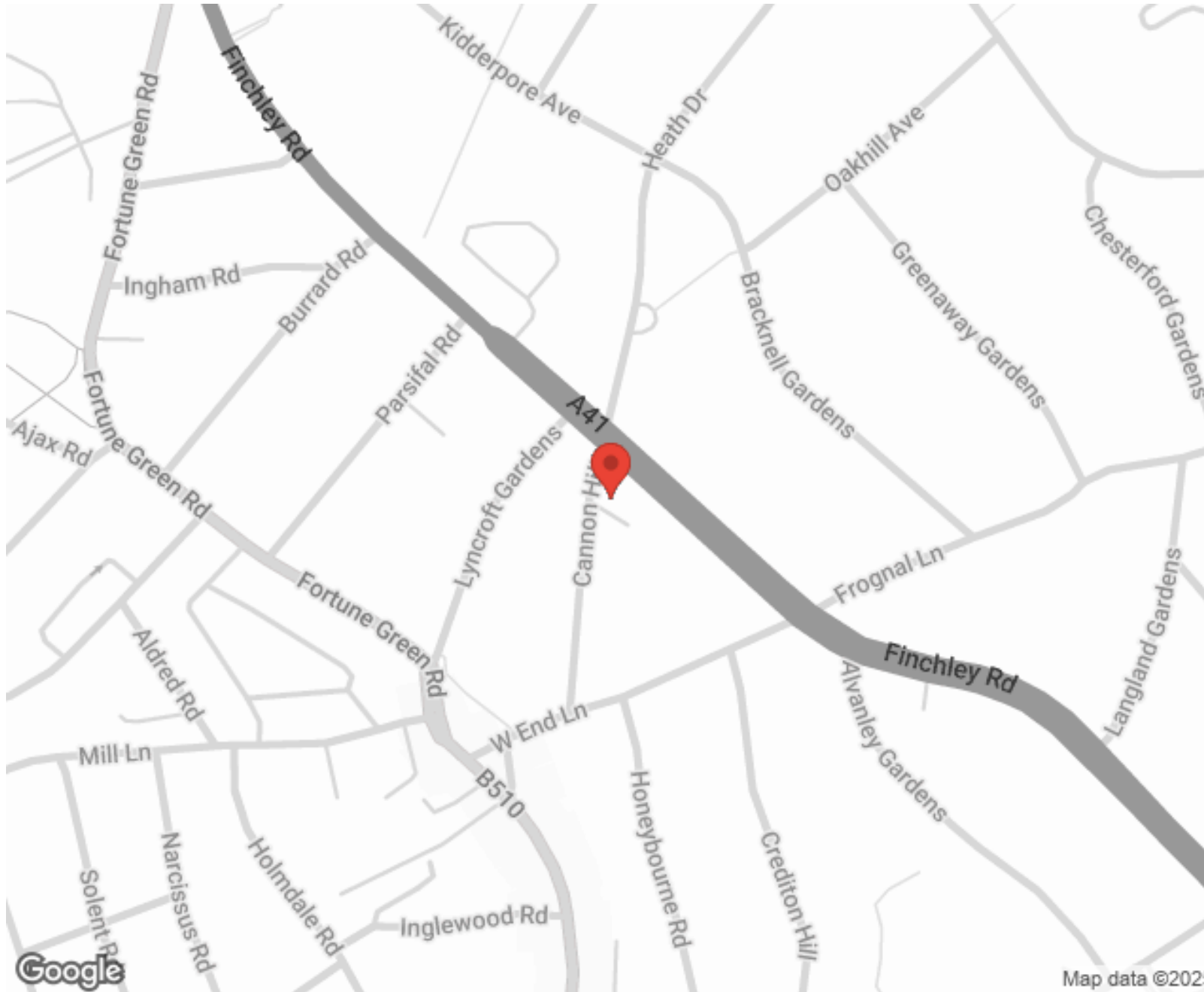
"I used Vita properties to find a flat recently and it was an overall professional, personalised and positive experience. Saira went the extra mile to accommodate to our needs and quick to help us whenever possible."



**MORE INFO, PICTURES,
CONTACT ON
OUR WEBSITE**



"Vita Properties is a very professional agency. My experience with them was incredible and the entire team was very helpful and kind throughout the renting process. I'd highly recommend!"



SCAN FOR MORE
GOOGLE REVIEWS



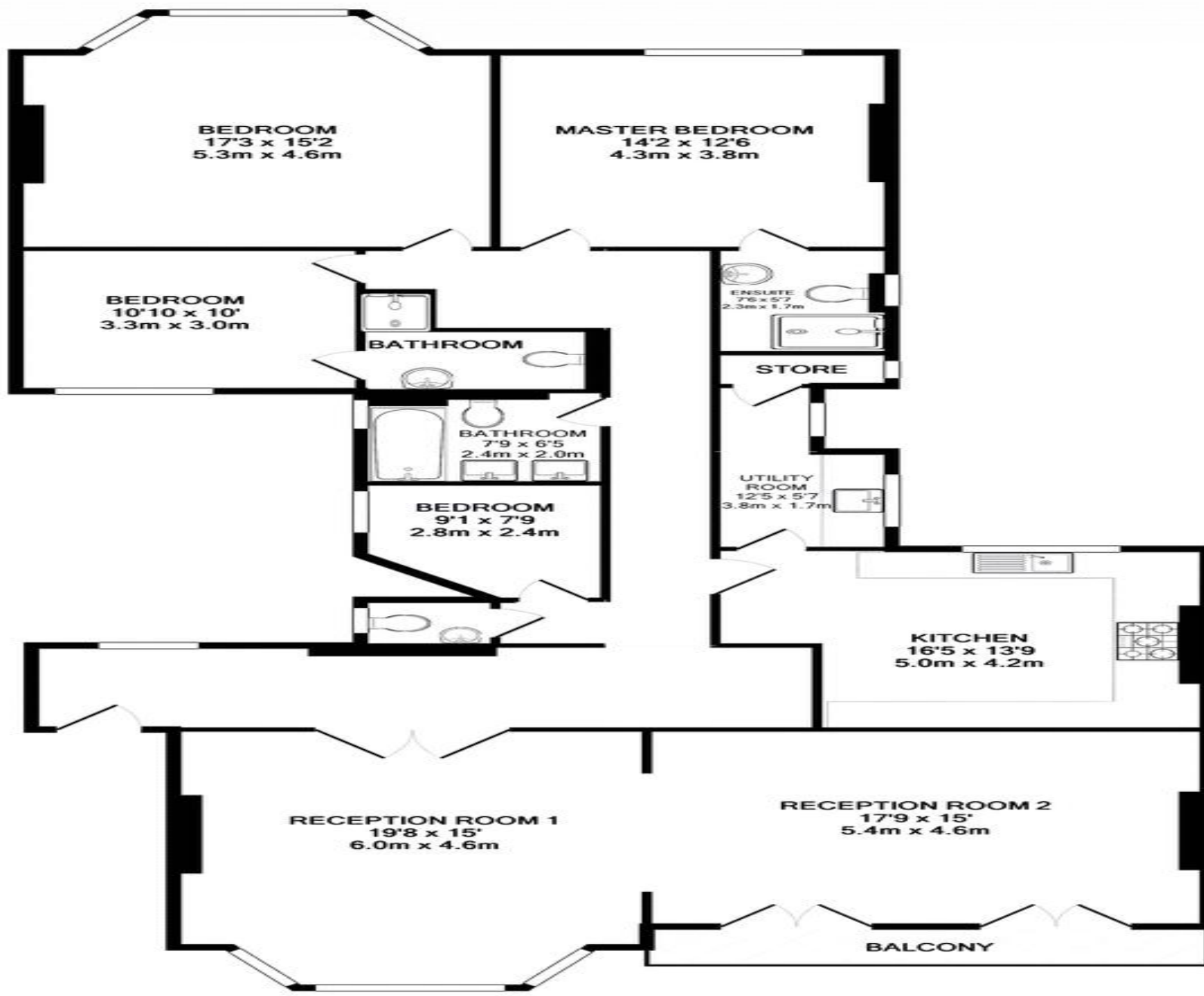
Google



4.9 Stars | 132 Reviews

Find us on social media

- vitaproperties
- VitaProperties
- VitaProperties



TOTAL APPROX. FLOOR AREA 1930 SQ.FT. (179.3 SQ.M.)

Whilst every attempt has been made to ensure the accuracy of the floor plan contained here, measurements of doors, windows, rooms and any other items are approximate and no responsibility is taken for any error, omission, or mis-statement. This plan is for illustrative purposes only and should be used as such by any prospective purchaser. The services, systems and appliances shown have not been tested and no guarantee as to their operability or efficiency can be given.
Made with Metropix ©2017