



Parsifal Road, West Hampstead, London NW6 .| £340

- Furnished
- Own Entrance
- Modern throughout
- Fitted Storage

- Available 21 August 2021

"Vita Properties have been tremendously helpful throughout the process of securing/renting my flat. Informative about the property, prompt communication, easy to use dashboard for sharing of information, and pleasant to work with. Highly recommend!"

Presenting a spacious one bed apartment set on a quaint, tree-lined street in West Hampstead, NW6 and offering excellent access to the many amenities of Finchley Road, West Hampstead and Fortune Green

Offered fully furnished with tasteful furnishings, this exceptional property offers a large reception room with dining space, bright and modern kitchen with integrated gas hobs, dishwasher and an abundance of cupboard space. A sizable, bay-shaped bedroom with soft carpets and enormous wardrobes and finally a large bathroom.

Further benefits access to communal gardens



Oliver Kent

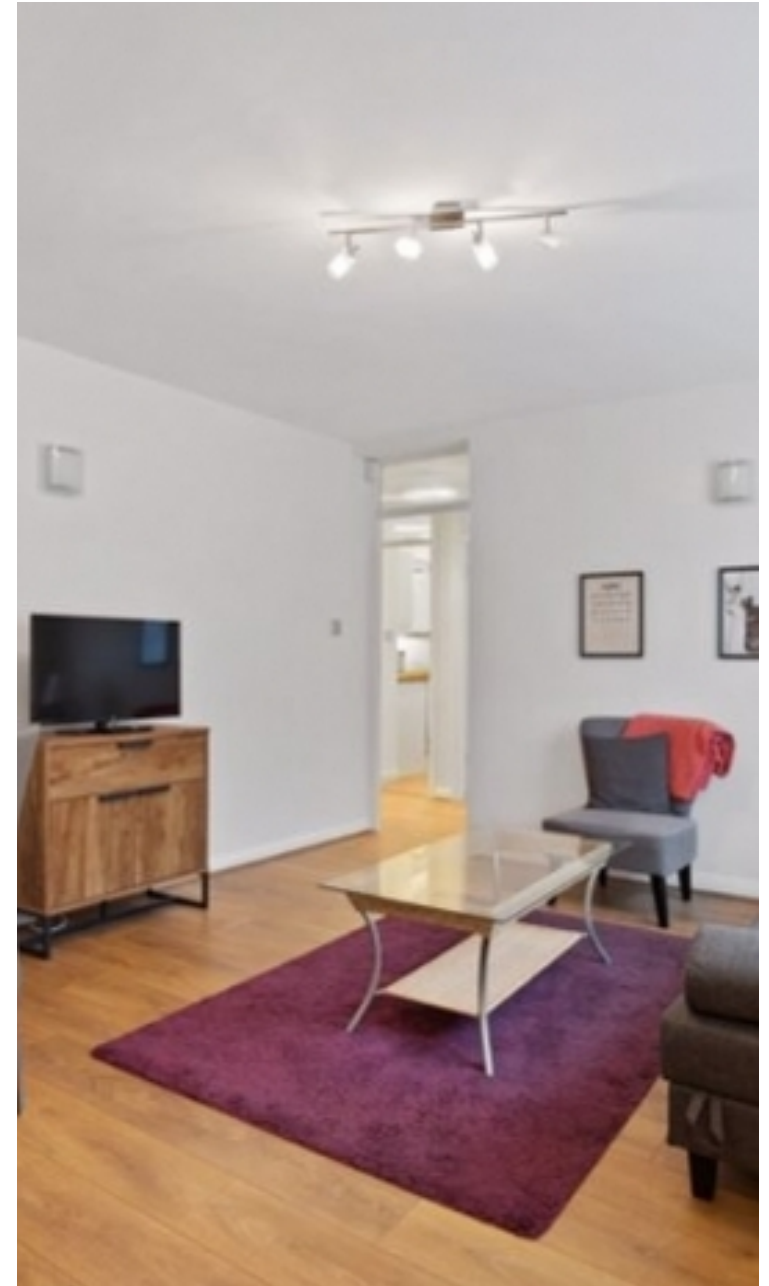
✉ oliver.kent@vitaproperties.uk
☎ +4477 7274 0351



🏠	Flat
🔑	Available to Let
🛏️	x 1
🍽️	x 1
🚿	x 1



"I was very impressed with Vita and their network of buyers. When the sale of my flat fell through (twice) they worked extremely hard to find new buyers in a difficult market - thank you!"



"Working with Vita properties has been a smooth experience! No complaints at all. Our letting agent, Diana has been fantastic and very helpful throughout the whole process. I would highly recommend both Vita properties and Diana."



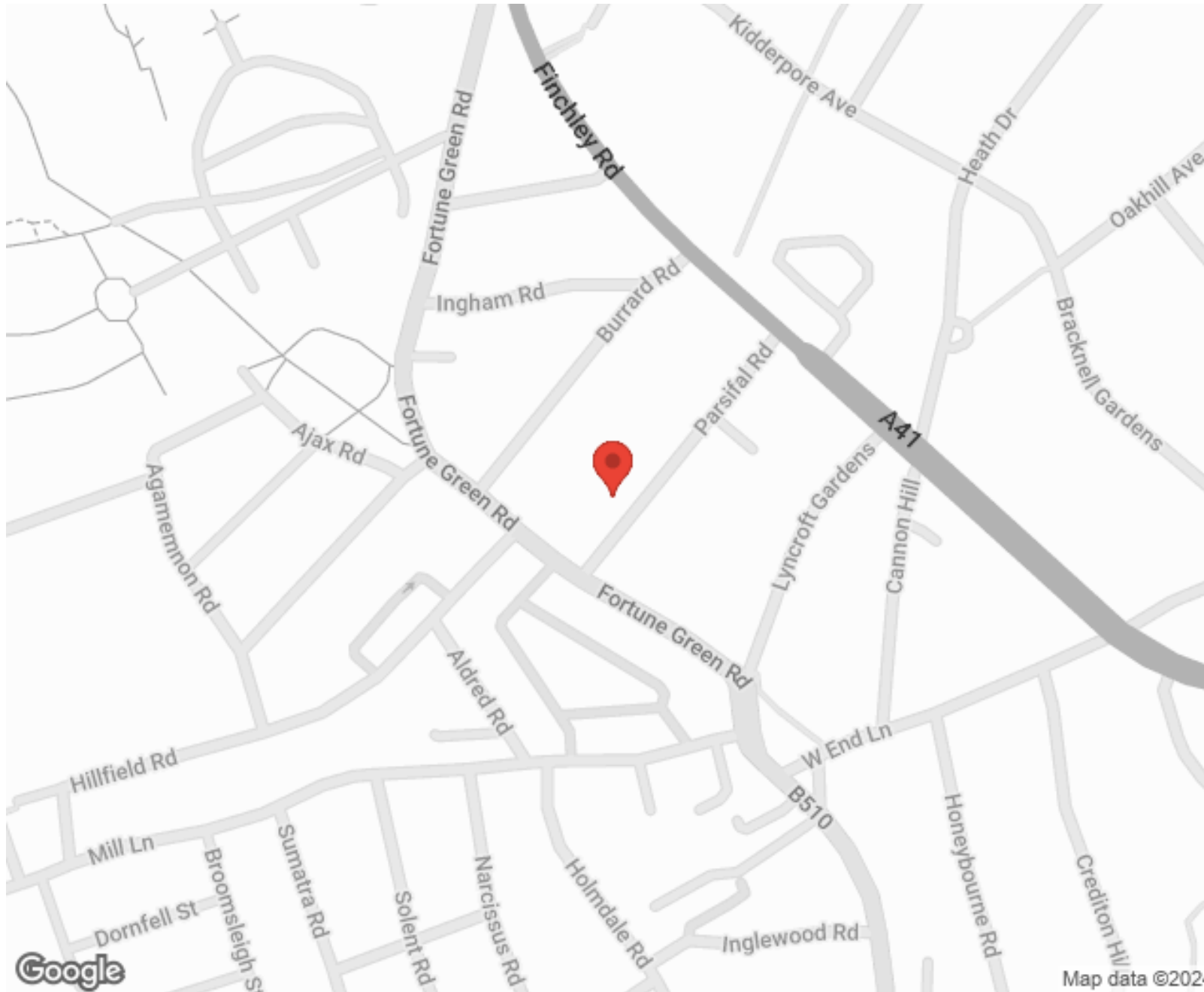
"I used Vita properties to find a flat recently and it was an overall professional, personalised and positive experience. Saira went the extra mile to accommodate to our needs and quick to help us whenever possible."



**MORE INFO, PICTURES,
CONTACT ON
OUR WEBSITE**



"Vita Properties is a very professional agency. My experience with them was incredible and the entire team was very helpful and kind throughout the renting process. I'd highly recommend!"



SCAN FOR MORE
GOOGLE REVIEWS




Google




4.9 Stars | 132 Reviews

Find us on social media

 vitaproperties

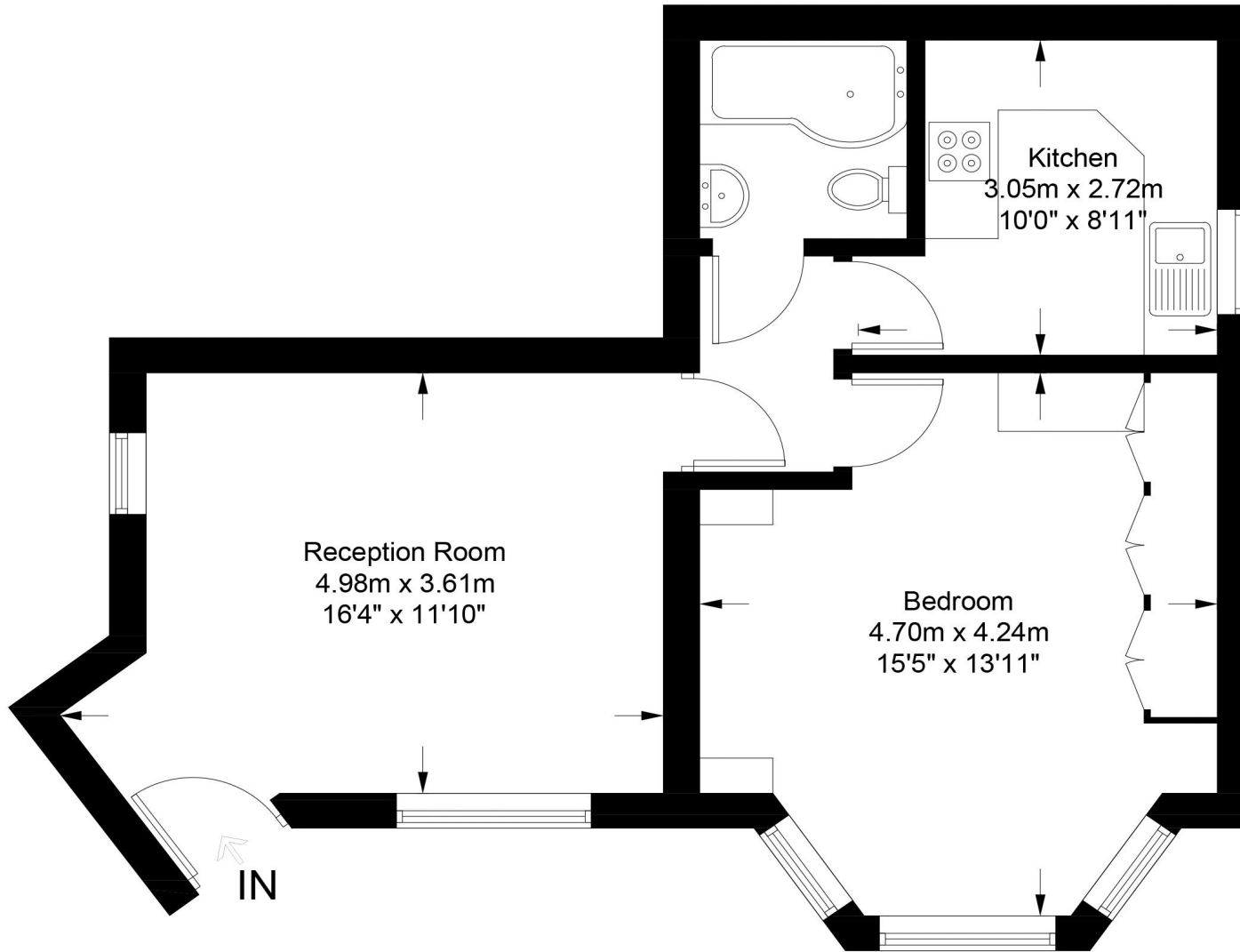
 VitaProperties

 VitaProperties



Parsifal Road, NW6

Approximate Gross Internal Area = 510 sq ft / 47.4 sq m



Ground Floor

This plan is for layout guidance only. Not drawn to scale unless stated. Windows and door openings are approximate. Whilst every care is taken in the preparation of this plan, please check all dimensions, shapes and compass bearings before making any decisions reliant upon them. (ID727622)