



Clive Court, Maida Vale, London W9 .| £995

- Three Bed, Three Bath
- 4th Floor with Lift Access
- Newly Refurbished
- Tasteful Furnishing

- Bright & Spacious
- Available immediately

"Vita Properties have been tremendously helpful throughout the process of securing/renting my flat. Informative about the property, prompt communication, easy to use dashboard for sharing of information, and pleasant to work with. Highly recommend!"

A sleek and sophisticated 3/4 bed, 3 bath apartment, set on the fourth floor (with lift access) of this lovely red brick mansion block, in W9.

This delightful property has been recently refurbished with the greatest care and attention to detail. Comprising of an exceptionally large reception room with dining area, original feature fireplace and partition doors leading through to a large study. A sleek kitchen with integrated appliances and abundance of counter/ cupboard space, A huge master bedroom with three-piece en-suite bathroom, second double bedroom, third small-double bedroom and two separate, fully-tiled shower rooms. This property is offered inclusive of brand new, top-quality furnishings and boasts spot lighting throughout, gorgeous hardwood flooring to common areas and plush grey carpets to the bedrooms, as well as boasting a wealth of useful storage space.

Found in the heart of Maida Vale there is a great selection of local shops, bars and restaurants right on your doorsteps and fantastic transport links via Maida Vale & Warwick Avenue Station (Bakerloo Line).

🏠 Flat
🔑 Available
to Let
🛏️ x 4
🚿 x 1
🚿 x 3

SCAN FOR
A VIDEO
WALKTHROUGH

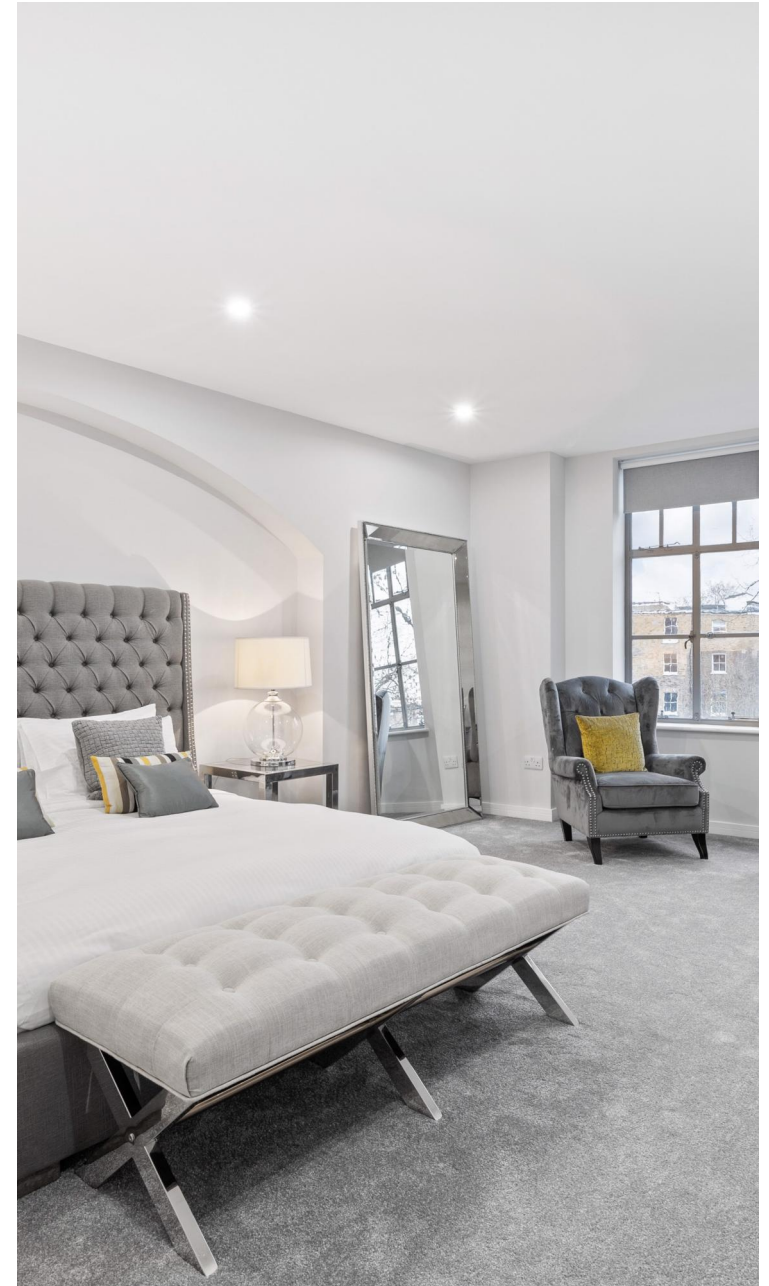


Oliver Kent

✉️ oliver.kent@vitaproperties.uk
☎️ +4477 7274 0351



"I was very impressed with Vita and their network of buyers. When the sale of my flat fell through (twice) they worked extremely hard to find new buyers in a difficult market - thank you!"



"Working with Vita properties has been a smooth experience! No complaints at all. Our letting agent, Diana has been fantastic and very helpful throughout the whole process. I would highly recommend both Vita properties and Diana."



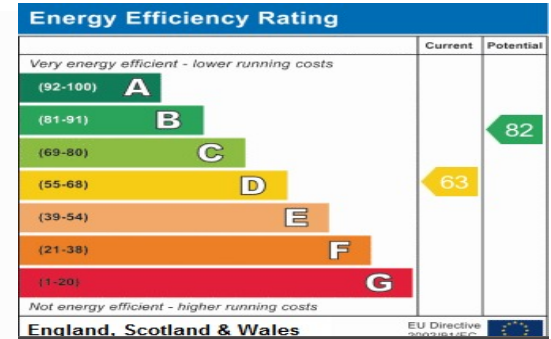
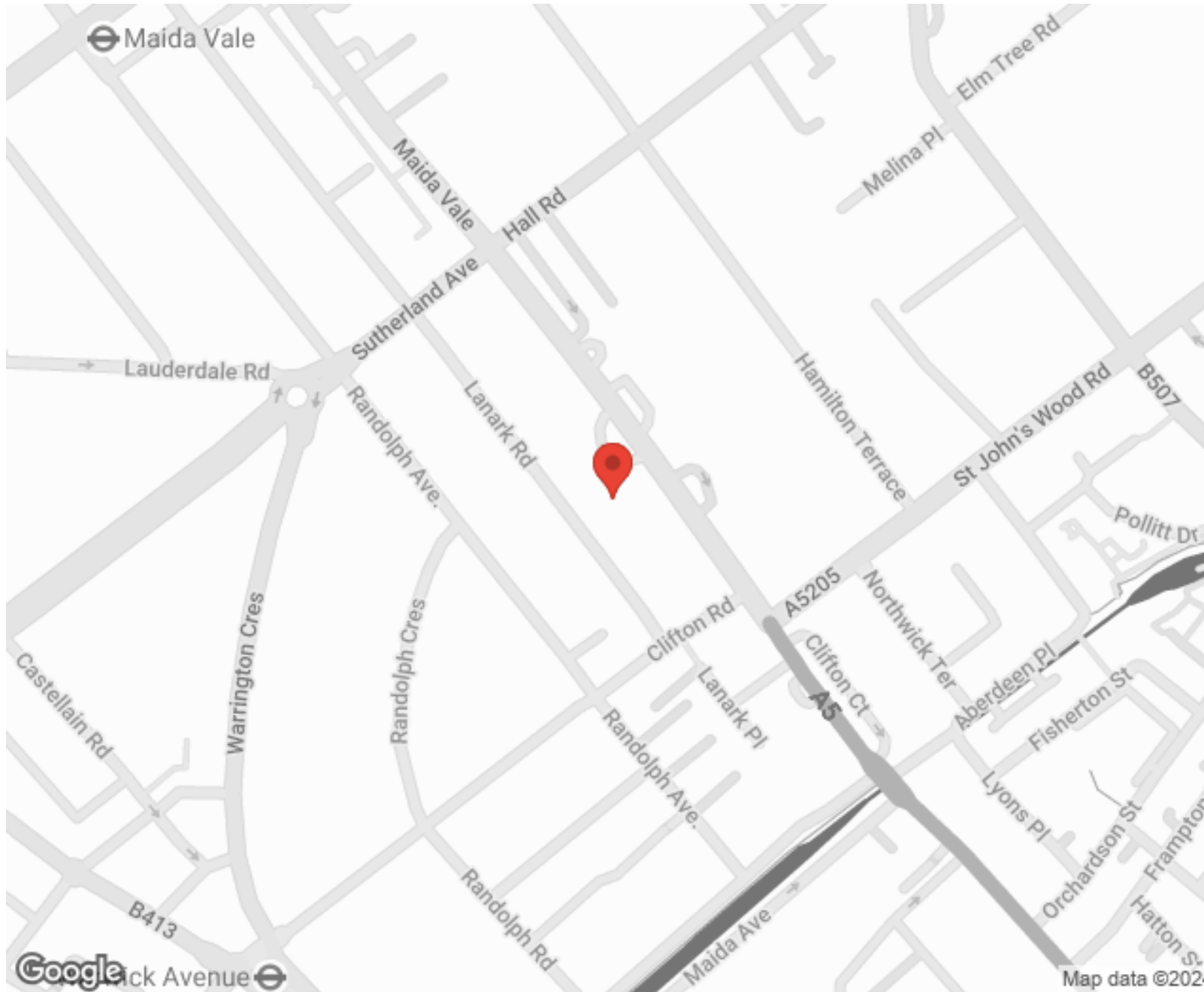
"I used Vita properties to find a flat recently and it was an overall professional, personalised and positive experience. Saira went the extra mile to accommodate to our needs and quick to help us whenever possible."



**MORE INFO, PICTURES,
CONTACT ON
OUR WEBSITE**



"Vita Properties is a very professional agency. My experience with them was incredible and the entire team was very helpful and kind throughout the renting process. I'd highly recommend!"



SCAN FOR MORE
GOOGLE REVIEWS






Google



4.9 Stars | 132 Reviews

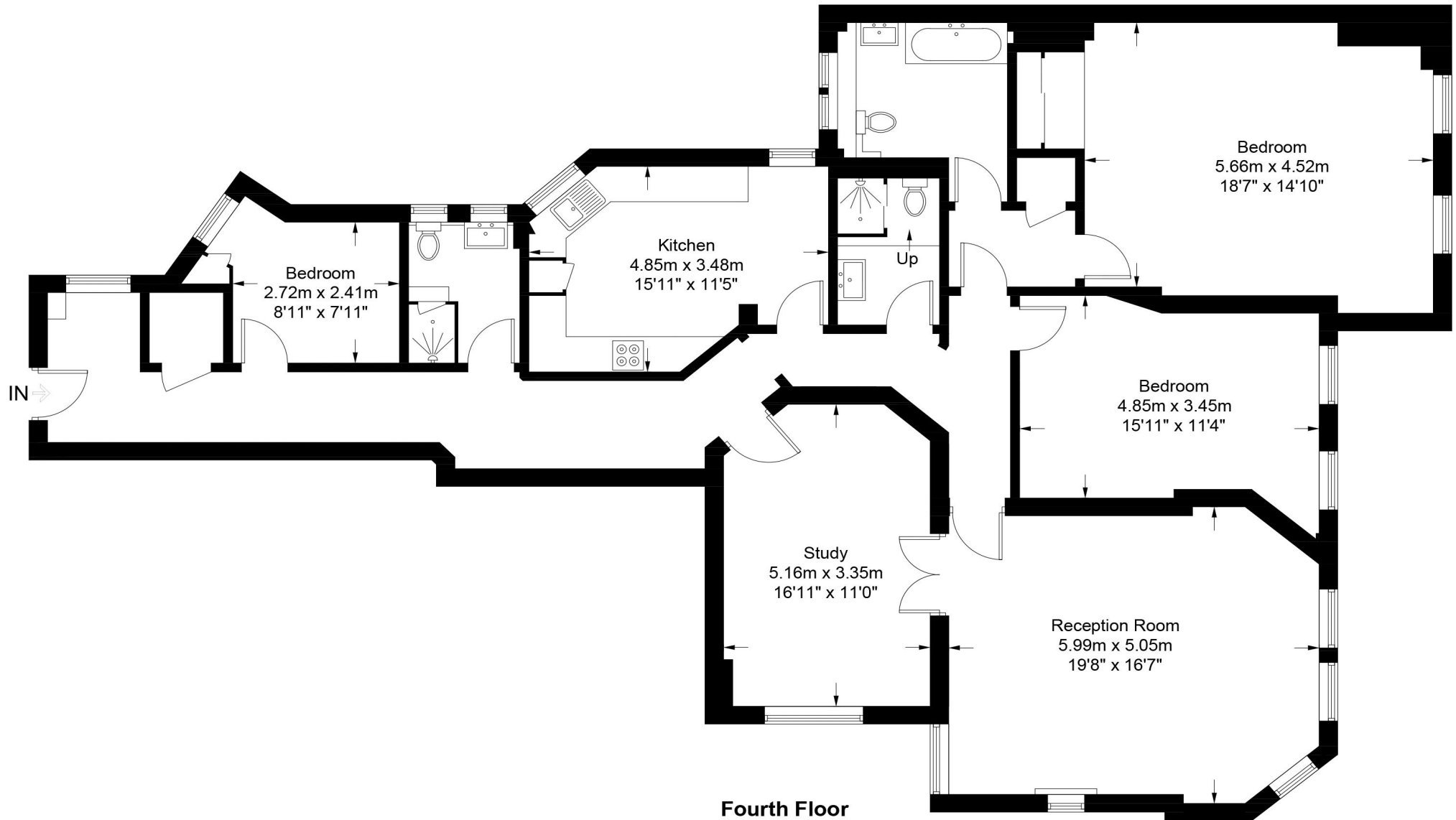
Find us on social media

-  vitaproperties
-  VitaProperties
-  VitaProperties

Clive Court, W9



Approximate Gross Internal Area = 1816 sq ft / 168.7 sq m



Fourth Floor

This plan is for layout guidance only. Not drawn to scale unless stated. Windows and door openings are approximate. Whilst every care is taken in the preparation of this plan, please check all dimensions, shapes and compass bearings before making any decisions reliant upon them. (ID726411)