



Arkwright Road, Hampstead, London, NW3 6BJ .| £1,000

- Moments to Hampstead High Street & Tube
- Within 10 mins walk to Finchley Road Amenities
- Four Double Bedrooms - Four bathrooms
- Available 11 January 2021

"Vita Properties have been tremendously helpful throughout the process of securing/renting my flat. Informative about the property, prompt communication, easy to use dashboard for sharing of information, and pleasant to work with. Highly recommend!"

Available 11 January 2021 - We are delighted to offer this modern 1800 sq ft 4 bedroom, 4 bathroom garden flat located between Fitzjohns Avenue and Finchley on Arkwright Road, Hampstead, NW3 This flat offer great living space and comprises a large reception room with dining area with double doors opening onto a well maintained private garden, a large eat in kitchen fully fitted, 4 double bedrooms all with en suite bathrooms, off street parking on a first come first serve basis (on street parking permits allowed) and wooden floors with carpet in bedrooms.

Offered on a furnished or unfurnished basis



Oliver Kent

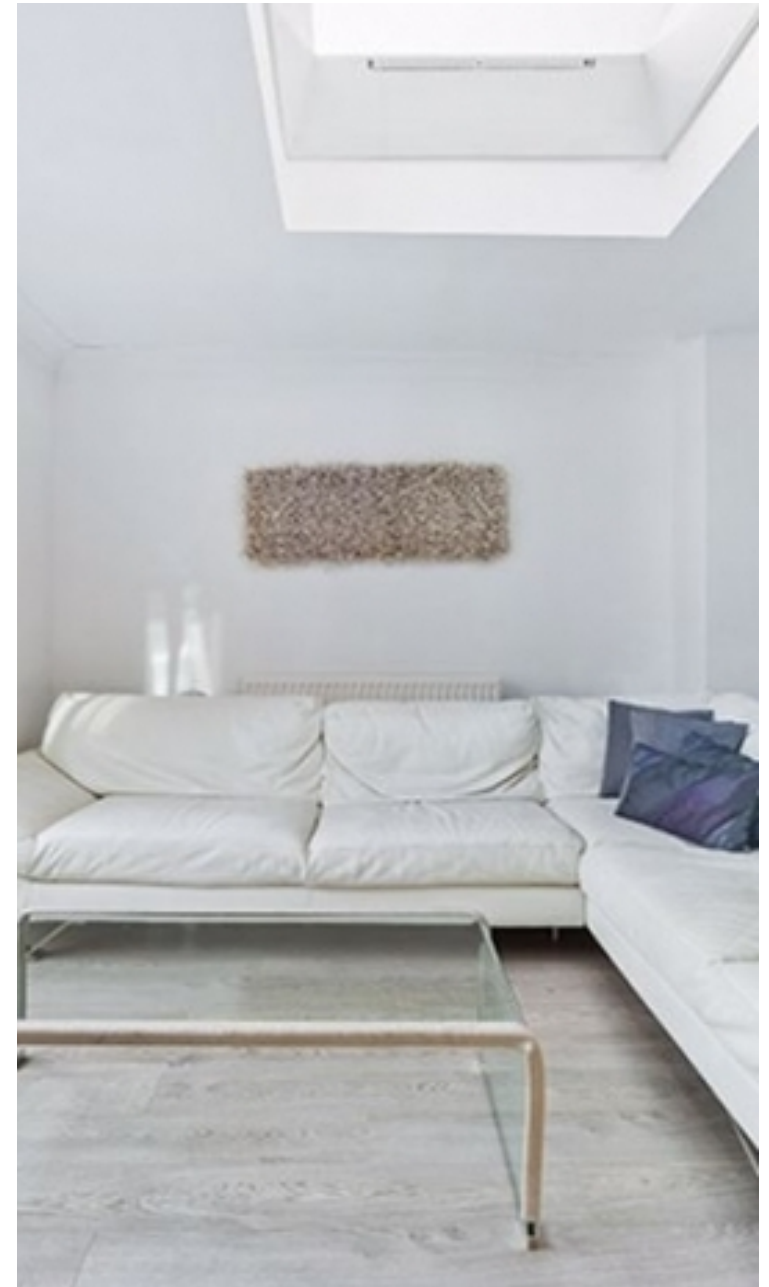
✉ oliver.kent@vitaproperties.uk
☎ +4477 7274 0351



🏠	Flat
🔑	Available to Let
🛏️	x 4
🛋️	x 1
🚿	x 4



"I was very impressed with Vita and their network of buyers. When the sale of my flat fell through (twice) they worked extremely hard to find new buyers in a difficult market - thank you!"



"Working with Vita properties has been a smooth experience! No complaints at all. Our letting agent, Diana has been fantastic and very helpful throughout the whole process. I would highly recommend both Vita properties and Diana."



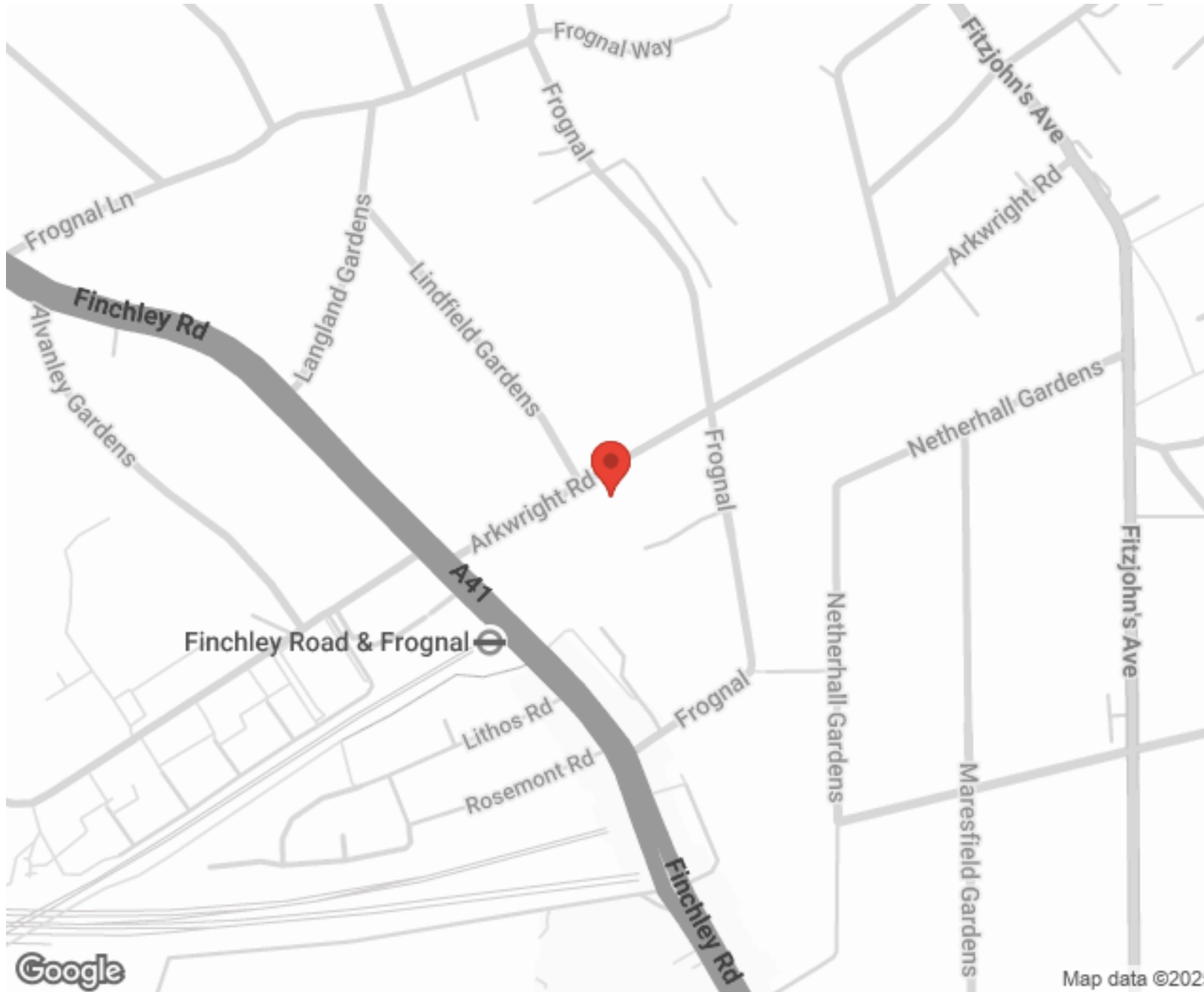
"I used Vita properties to find a flat recently and it was an overall professional, personalised and positive experience. Saira went the extra mile to accommodate to our needs and quick to help us whenever possible."



**MORE INFO, PICTURES,
CONTACT ON
OUR WEBSITE**



"Vita Properties is a very professional agency. My experience with them was incredible and the entire team was very helpful and kind throughout the renting process. I'd highly recommend!"



SCAN FOR MORE
GOOGLE REVIEWS



Google



4.9 Stars | 132 Reviews

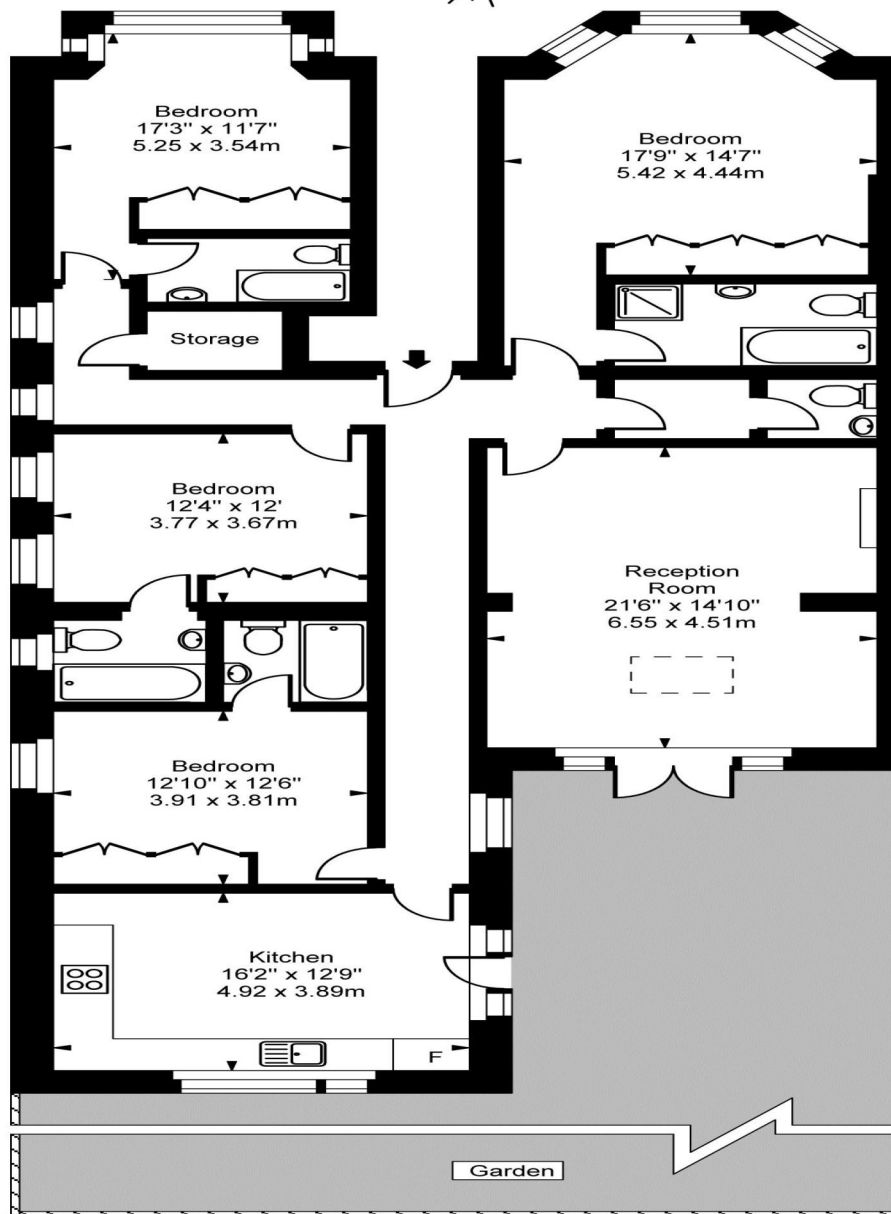
Find us on social media

 vitaproperties

 VitaProperties

 VitaProperties

Arkwright Road



Ground Floor

Approx Gross Internal Area **1882 Sq Ft - 174.89 Sq M**

For Illustration Purposes Only - Not To Scale
Floor plan by www.creativeplanettk.com