



"Vita Properties have been tremendously helpful throughout the process of securing/renting my flat. Informative about the property, prompt communication, easy to use dashboard for sharing of information, and pleasant to work with. Highly recommend!"

Unique penthouse. A rarity in the area. 2 bedroom with a study area, which can be partitioned off.

Integrated cupboards. Home automated system. Newly refurbished, architecturally designed with impressive Italian fittings.

Very modern with fantastic views across London. Loxone automation system to include control of the underfloor heating, music, lights, curtains and alarm system.

The underfloor heating and speaker system can be controlled to individual zones. The bedrooms have two types of blinds with black out blinds and privacy blinds.

An iPad is supplied for ease of controlling the system to individual requirements. The roller blinds in the living room are high performance screen solar and glare reduction for extra comfort.

Nearest tube station is Chalk Farm Station, roughly a 4 minute walk away.

🏠 Flat
🔑 Under
Negotiation
🛏 x 2
🛋 x 1
🚿 x 2

SCAN FOR
A VIDEO
WALKTHROUGH

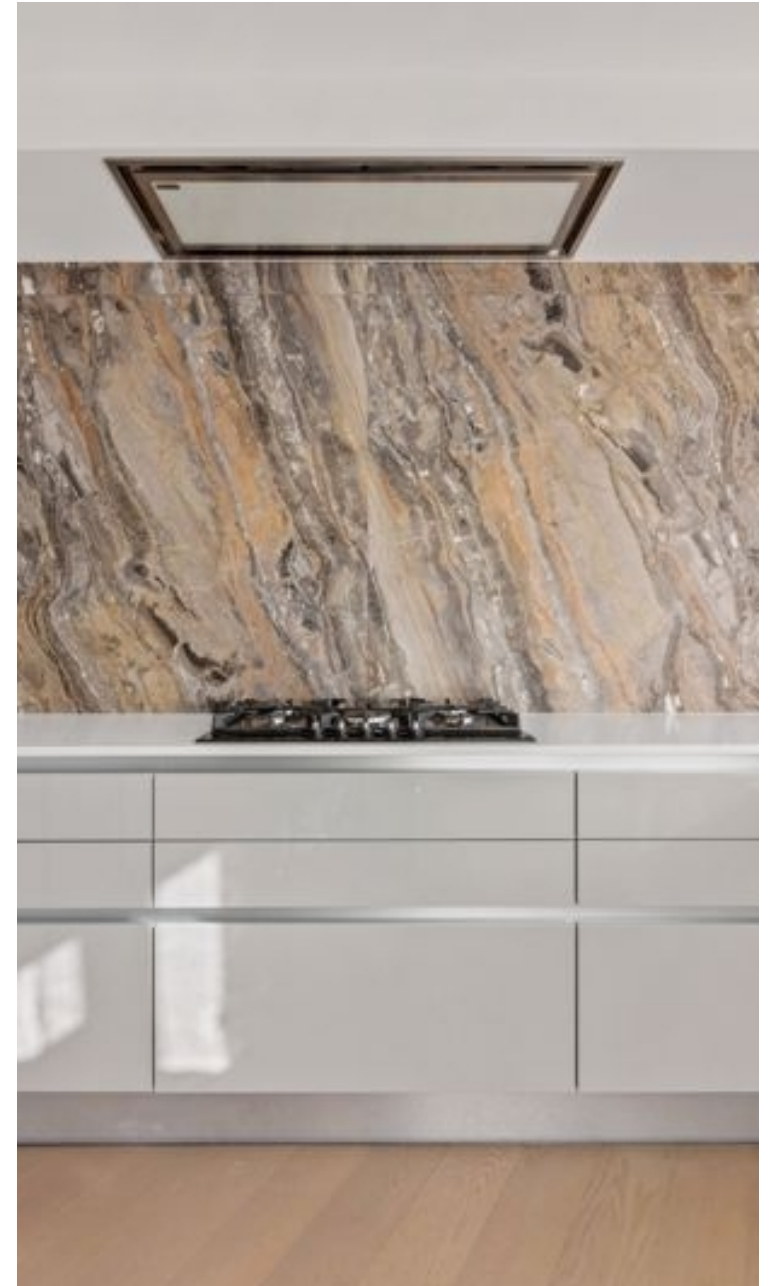


Oliver Kent

✉ oliver.kent@vitaproperties.uk
☎ +4477 7274 0351



"I was very impressed with Vita and their network of buyers. When the sale of my flat fell through (twice) they worked extremely hard to find new buyers in a difficult market - thank you!"



"Working with Vita properties has been a smooth experience! No complaints at all. Our letting agent, Diana has been fantastic and very helpful throughout the whole process. I would highly recommend both Vita properties and Diana."



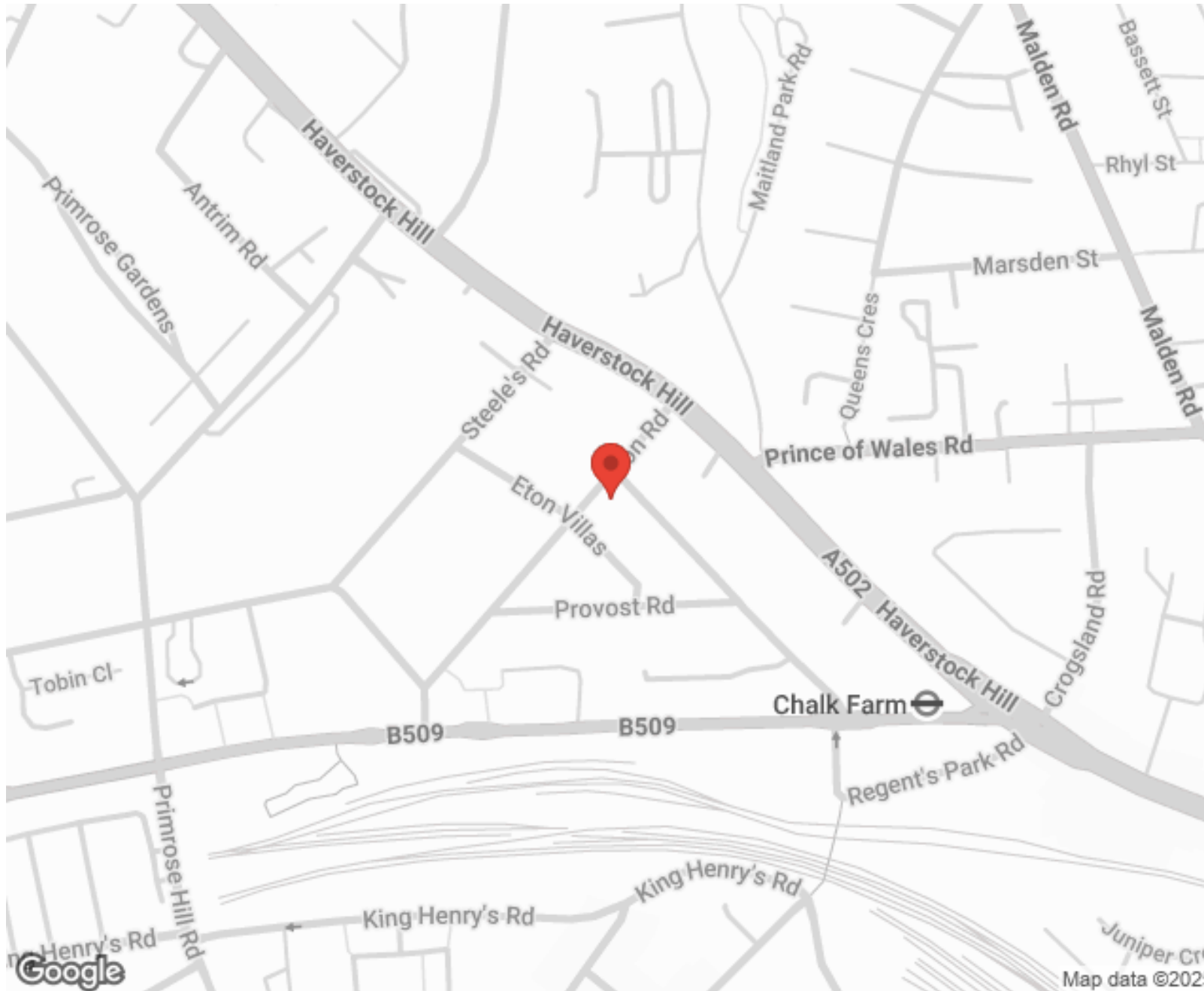
"I used Vita properties to find a flat recently and it was an overall professional, personalised and positive experience. Saira went the extra mile to accommodate to our needs and quick to help us whenever possible."



MORE INFO, PICTURES,
CONTACT ON
OUR WEBSITE



"Vita Properties is a very professional agency. My experience with them was incredible and the entire team was very helpful and kind throughout the renting process. I'd highly recommend!"



SCAN FOR MORE
GOOGLE REVIEWS




Google




4.9 Stars | 132 Reviews

Find us on social media

 vitaproperties

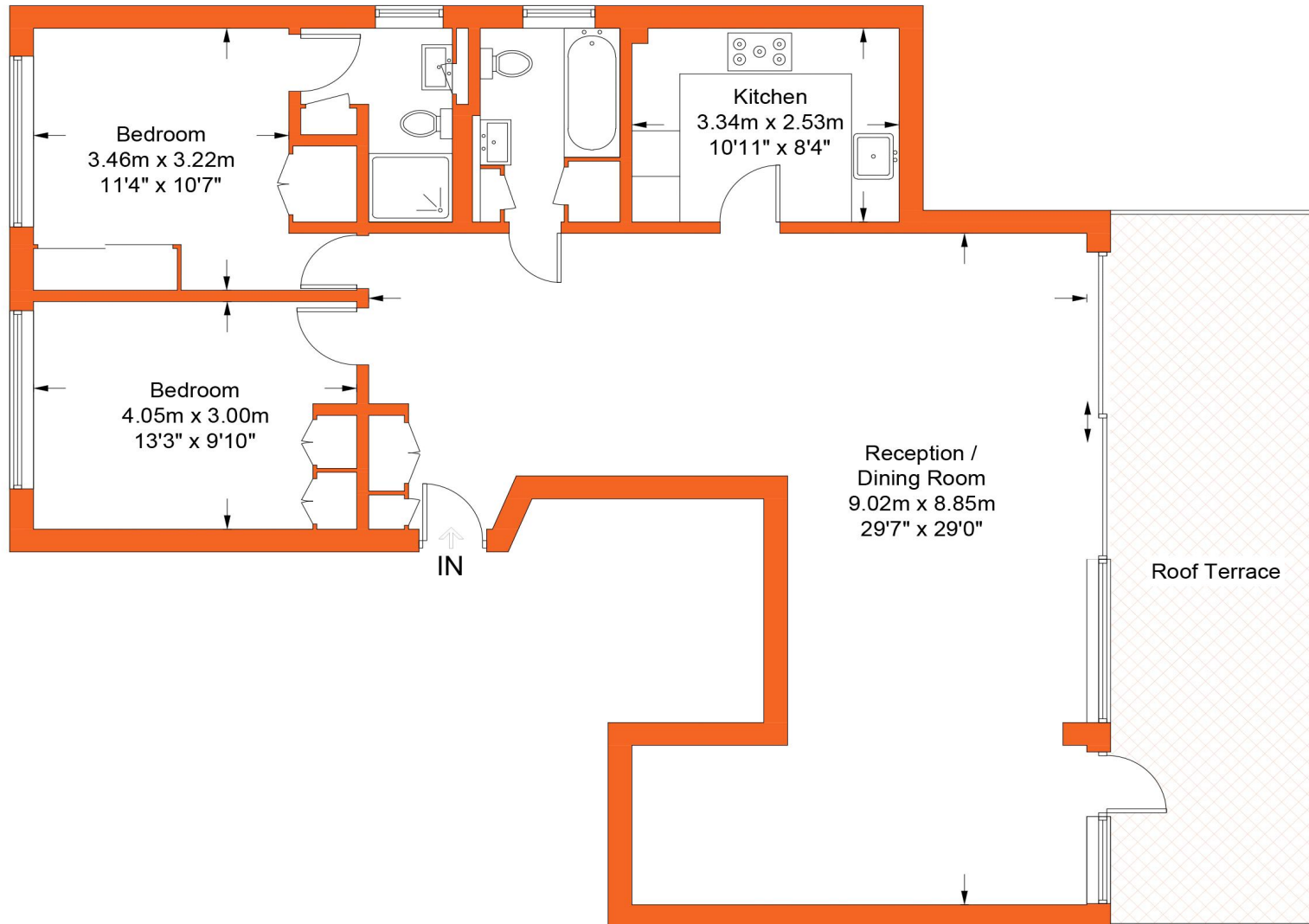
 VitaProperties

 VitaProperties



Eton Road, NW3

Approximate Gross Internal Area = 101.8 sq m / 1096 sq ft



Sixth Floor

This plan is for layout guidance only. Not drawn to scale unless stated. Windows and door openings are approximate. Whilst every care is taken in the preparation of this plan, please check all dimensions, shapes and compass bearings before making any decisions reliant upon them. (ID702127)