



Sandwell Mansions, West End Lane, West Hampstead, London, NW6 .| £1,200,000

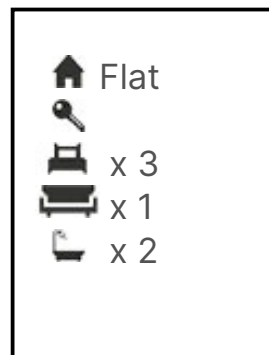
- High Ceilings
- 3 minute walk to Tube Station
- Recently Refurbished
- Share of Freehold

- Chain Free
- Can be used as a 4 bed 1 reception or a 3 bed 2 reception

"Vita Properties have been tremendously helpful throughout the process of securing/renting my flat. Informative about the property, prompt communication, easy to use dashboard for sharing of information, and pleasant to work with. Highly recommend!"

Presenting this superb 3 Bedroom, 2 Reception, 2 Bathroom Apartment on the Ground Floor of an Impressive Mansion Block; Recently refurbished, offering over 1300 sqft of lateral space, combining original features with modern finishes. All the rooms are very large, giving a wonderful sense of space throughout, separate eat in kitchen. Offered with no onward chain and Share of Freehold.

Sandwell Mansions is conveniently located on West End Lane within close proximity of the vast array of local shops and amenities as well as having unrivaled transport links including Thameslink and Underground train lines. Finchley Road, Hampstead and Queens Park are also nearby.



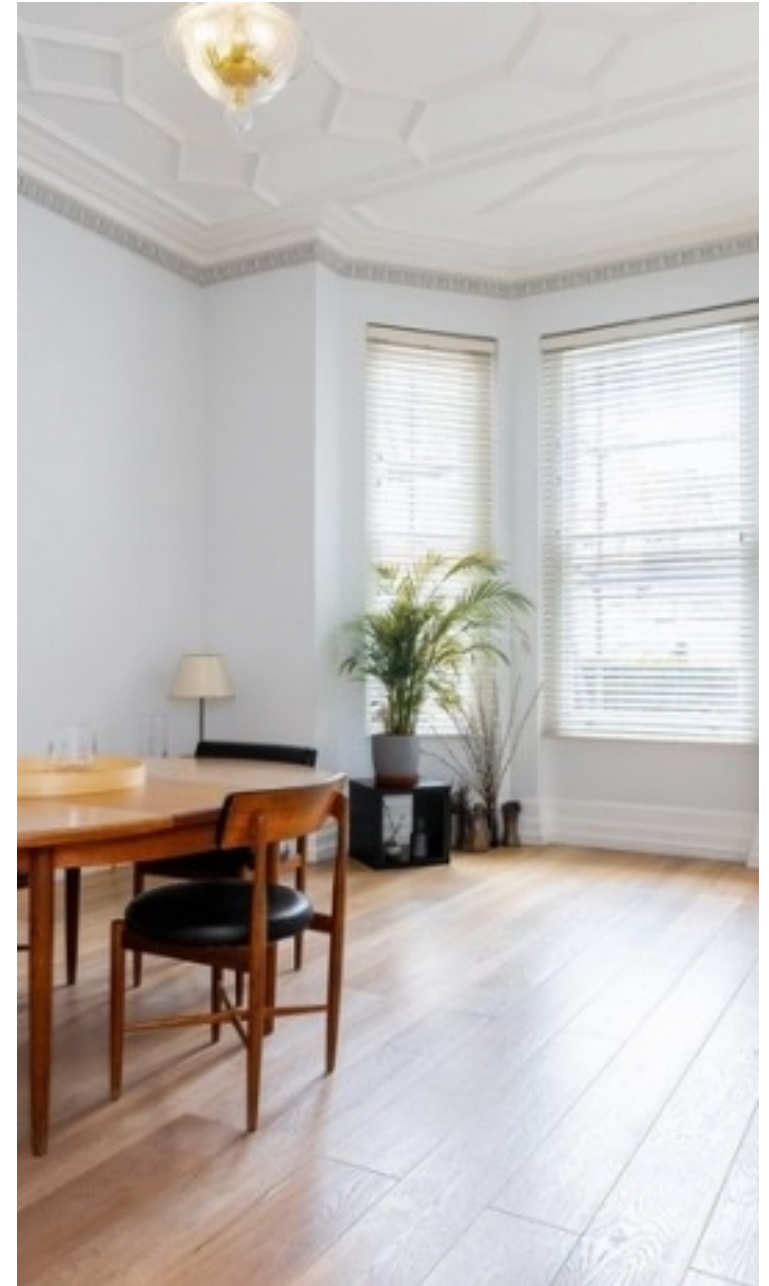
Oliver Kent

✉ oliver.kent@vitaproperties.uk

☎ +4477 7274 0351



"I was very impressed with Vita and their network of buyers. When the sale of my flat fell through (twice) they worked extremely hard to find new buyers in a difficult market - thank you!"



"Working with Vita properties has been a smooth experience! No complaints at all. Our letting agent, Diana has been fantastic and very helpful throughout the whole process. I would highly recommend both Vita properties and Diana."



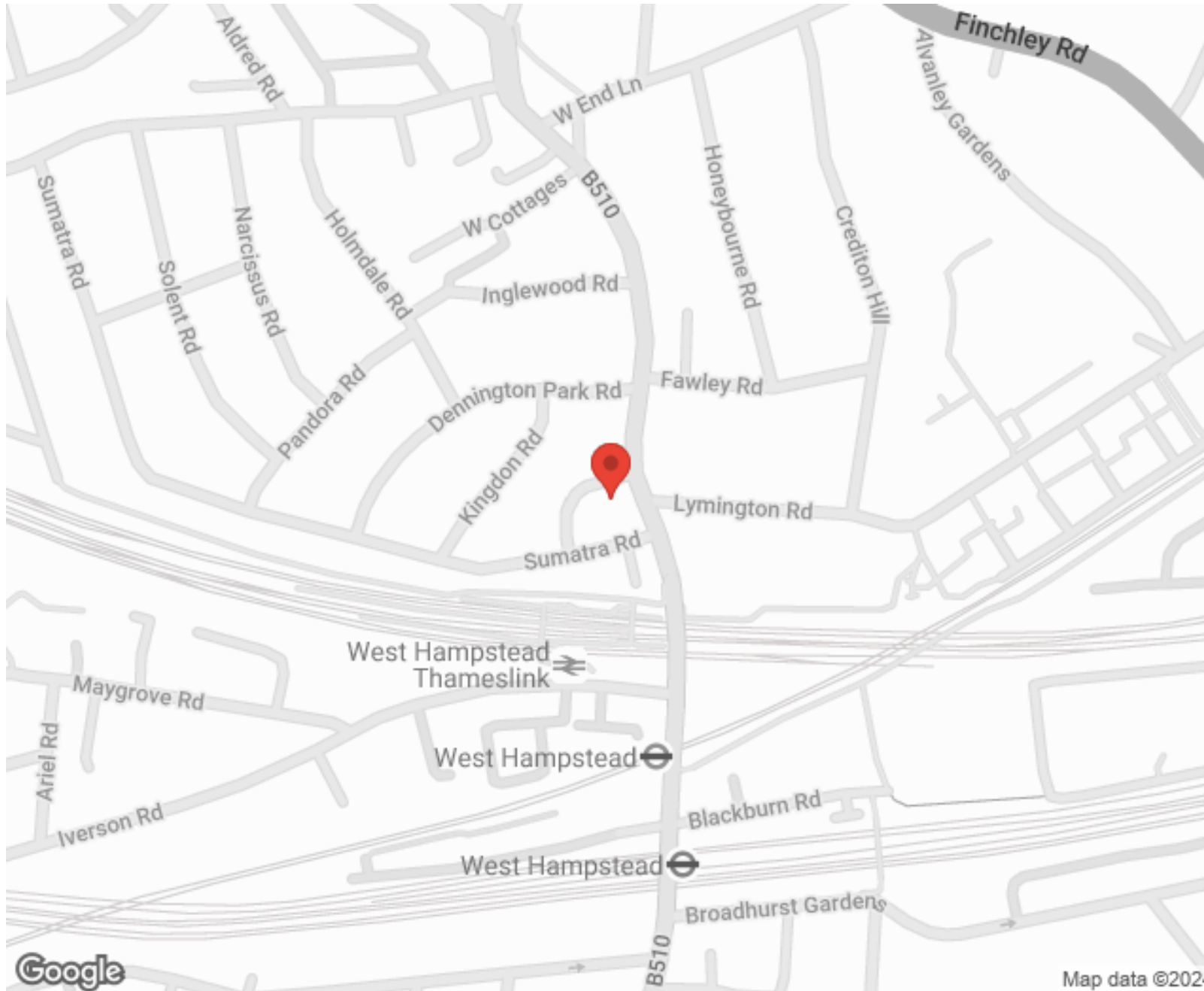
"I used Vita properties to find a flat recently and it was an overall professional, personalised and positive experience. Saira went the extra mile to accommodate to our needs and quick to help us whenever possible."



**MORE INFO, PICTURES,
CONTACT ON
OUR WEBSITE**



"Vita Properties is a very professional agency. My experience with them was incredible and the entire team was very helpful and kind throughout the renting process. I'd highly recommend!"



SCAN FOR MORE
GOOGLE REVIEWS






Google



4.9 Stars | 132 Reviews

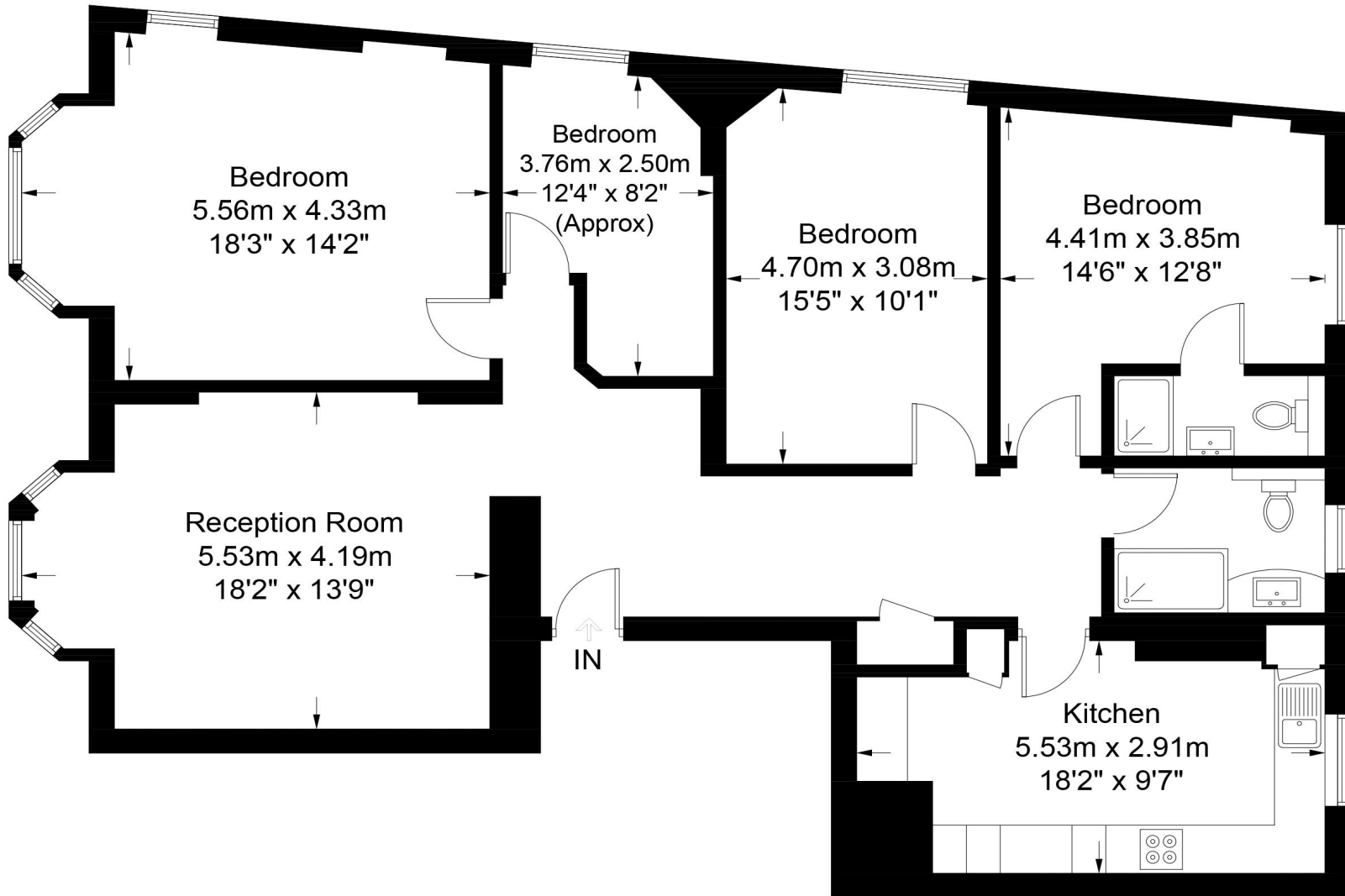
Find us on social media

-  vitaproperties
-  VitaProperties
-  VitaProperties

Sandwell Mansions, West End Lane



Approximate Gross Internal Area = 1337 sq ft / 124.2 sq m



Ground Floor

This plan is for layout guidance only. Not drawn to scale unless stated. Windows and door openings are approximate. Whilst every care is taken in the preparation of this plan, please check all dimensions, shapes and compass bearings before making any decisions reliant upon them. (ID571944)